

TEL : 82-53-668-0286
FAX : 82-53-668-0277
AFS : RKRRYNYX
E-mail : aisd@korea.kr
Web : <https://aim.koca.go.kr>

REPUBLIC OF KOREA
Ministry of Land, Infrastructure and Transport
Office of Civil Aviation
11, Doum 6-ro, Sejong-si, 30103, Republic of Korea

AIRAC
AIP
Supplement 93/25
16 OCT 2025

GEN : NIL

ENR : NIL

A D : SEOUL/Gimpo INTL(RKSS)

OPERATIONAL RESTRICTIONS

(Effective : 1600UTC 26 NOV 2025)

1. INTRODUCTION

Some part of P4, aprons(ACFT stands NR. 35 to 36, 209) at Gimpo INTL Airport will be closed as follows due to pavement construction.

2. PERIOD

From 1600 UTC 26 NOV 2025 To 1600 UTC 24 DEC 2025

3. WORKING AREAS (See the diagram below)

Location	Period	Working Hours
Some part of P4, ACFT stands NR. 35 to 36, 209	From 1600 UTC 26 NOV 2025 To 1600 UTC 24 DEC 2025	H24

4. REMARKS

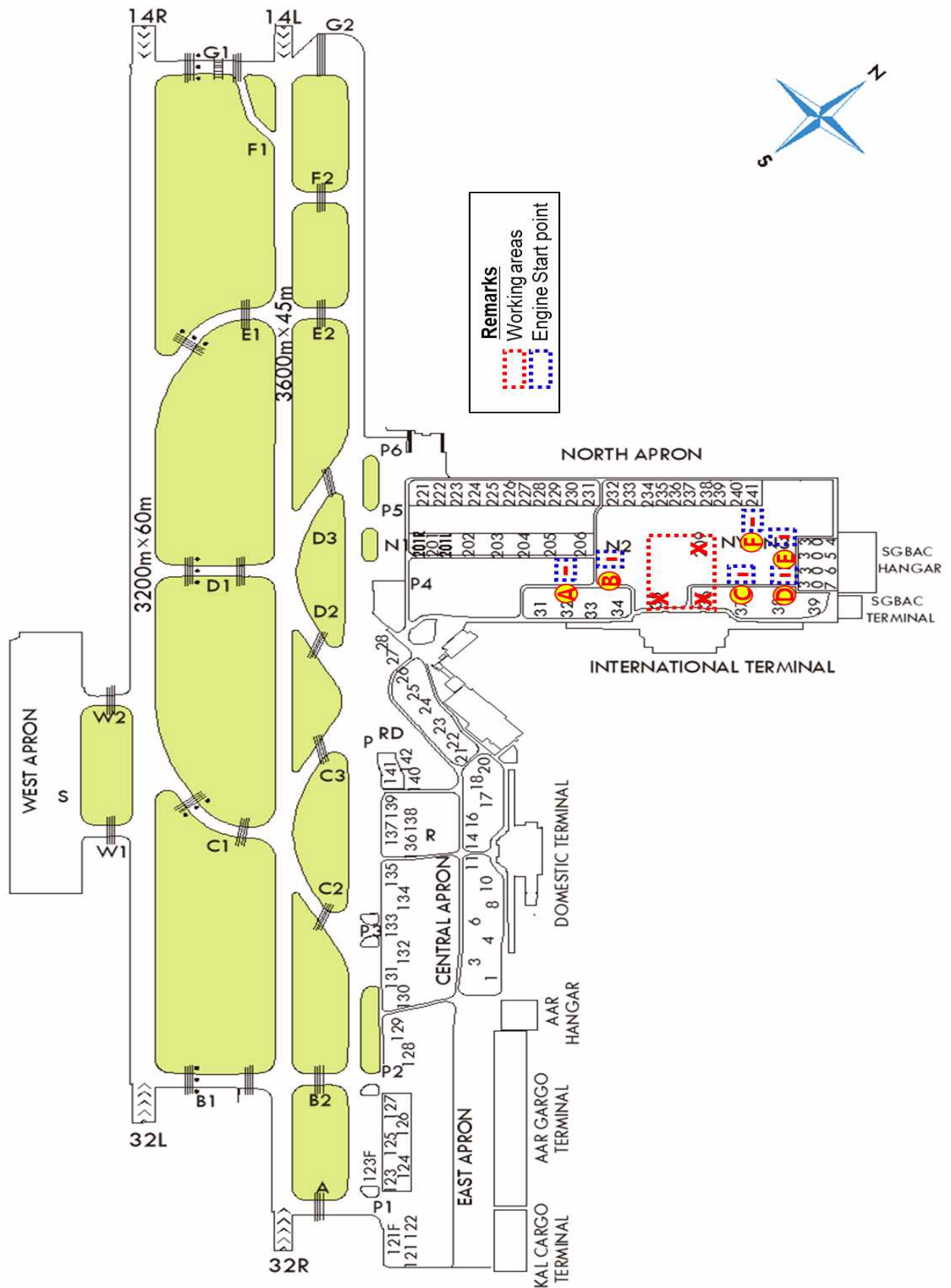
- (1) Safety fences and lights will be installed to indicate the working area.
- (2) ACFT stands NR. 35 to 36, 209 will be closed due to working area.
- (3) ACFT stand NR. 201(201L, 201R) will be used as multi-aircraft ramping system(MARS).
 - * If ACFT stand NR. 201 is occupied, both ACFT stands NR. 201L and 201R are unavailable.

(4) Departure procedures

ACFT Stands	Lead-out Procedures	Phraseology
NR. 31	All ACFT shall be pushed back to face Southwest on P4.	Push back approved
NR. 32 ~ 33	All ACFT shall be pushed back to face Southwest on P4 and then towed forward until its nosewheel is at the start point A on P4.	Push back approved at start point A
	If instructed to push back approved at start point B, ACFT shall be pushed back to face Southeast on N2 until its nosewheel is at the start point B on N2.	Push back approved at start point B
NR. 34	All ACFT shall be pushed back to face Southeast on N2 until its nosewheel is at the start point B on N2.	Push back approved at start point B
	If instructed to push back approved at start point A, ACFT shall be pushed back to face Southeast on N2 and then towed forward until its nosewheel is at the start point A on P4.	Push back approved at start point A
NR. 37	Code letter "C" ACFT shall be pushed back to face Southwest on P4.	Push back approved
	If instructed to push back approved at start point C, ACFT shall be pushed back to face Southeast on NY until its nosewheel is at the start point C on NY.	Push back approved at start point C
	If instructed to push back approved at start point F, ACFT shall be pushed back to face Southwest on P5 through NY until its nosewheel is at the start point F on P5.	Push back approved at start point F
NR. 38	All ACFT shall be pushed back to face Southeast on NY until its nosewheel is at the start point C on NY.	Push back approved at start point C
	If instructed to push back approved at start point D, ACFT shall be pushed back to face Southeast on N3 until its nosewheel is at the start point D on N3.	Push back approved at start point D
	If instructed to push back approved at start point F, ACFT shall be pushed back to face Southwest on P5 through NY until its nosewheel is at the start point F on P5.	Push back approved at start point F
NR. 39	Code letter "C" ACFT shall be pushed back to face Northeast on P4.	Push back approved facing NE
	If instructed to push back approved at start point D, ACFT shall be pushed back to face Southeast on N3 until its nosewheel is at the start point D on N3.	Push back approved at start point D
	If instructed to push back approved at start point F, ACFT shall be pushed back to face Southwest on P5 through N3 and then towed forward until its nosewheel is at the start point F on P5.	Push back approved at start point F
NR. 201 ~ 205	Self-maneuvering Stands(Up to Code letter "C").	Start-up approved
	Code letter "D" and above ACFT shall be pushed back to face Northeast on P5.	Push back approved
NR. 201L, 201R	Self-maneuvering Stand(Up to Code letter "C").	Start-up approved
NR. 206	Self-maneuvering Stand(Up to Code letter "C").	Start-up approved
	Code letter "D" ACFT shall be pushed back to face Northeast on P5.	Push back approved
NR. 221 ~ 231	All ACFT shall be pushed back to face Northeast on P5.	Push back approved
NR. 232 ~ 239	All ACFT shall be pushed back to face Southwest on P5.	Push back approved
NR. 240 ~ 241	All ACFT shall be pushed back to face Southwest on P5 and then towed forward until its nosewheel is at the start point F on P5.	Push back approved at start point F
	If instructed to push back approved at start point E, ACFT shall be pushed back to face Northwest on N3 until its nosewheel is at the start point E on N3.	Push back approved at start point E
NR. 304 ~ 305	All ACFT shall be pushed back to face Northwest on N3 and then towed forward until its nosewheel is at the start point E on N3.	Push back approved at start point E
	If instructed to push back approved at start point D, ACFT shall be pushed back to face Southeast on N3 and then towed forward until its nosewheel is at the start point D on N3.	Push back approved at start point D
NR. 306 ~ 307	All ACFT shall be pushed back to face Southeast on N3 and then towed forward until its nosewheel is at the start point D on N3.	Push back approved at start point D
	If instructed to push back approved at start point E, ACFT shall be pushed back to face Northwest on N3 and then towed forward until its nosewheel is at the start point E on N3.	Push back approved at start point E

(5) Any change to the contents of these pages will be notified by NOTAM.

5. DIAGRAM



6. LOW VISIBILITY PROCEDURES

Departure		Arrival		
				14R/L
				32R/L