

TEL : 82-53-668-0286  
FAX : 82-53-668-0277  
AFS : RKRRYNYX  
E-mail : aisd@korea.kr  
Web : <https://aim.koca.go.kr>

# REPUBLIC OF KOREA

Ministry of Land, Infrastructure and Transport  
Office of Civil Aviation

11, Doum 6-ro, Sejong-si, 30103, Republic of Korea

AIRAC

AIP

Supplement 40/25

3 APR 2025

**GEN : NIL**

**ENR : NIL**

**A D : SEOUL/Gimpo INTL(RKSS)**

## OPERATIONAL RESTRICTIONS

(Effective : 1600UTC 14 MAY 2025)

### 1. INTRODUCTION

Some part of P4, aprons(ACFT stands NR. 35 to 36, 209, 201, 201R, 202 to 203) at Gimpo INTL Airport will be closed as follows due to pavement construction.

### 2. PERIOD

From 1600 UTC 14 MAY 2025 To 1600 UTC 26 NOV 2025

### 3. WORKING AREAS (See the diagrams below)

Location	Period	Working Hours
Some part of P4, ACFT stands NR. 35 to 36, 209, 201, 201R, 202 to 203	From 1600 UTC 14 MAY 2025 To 1600 UTC 26 NOV 2025	H24

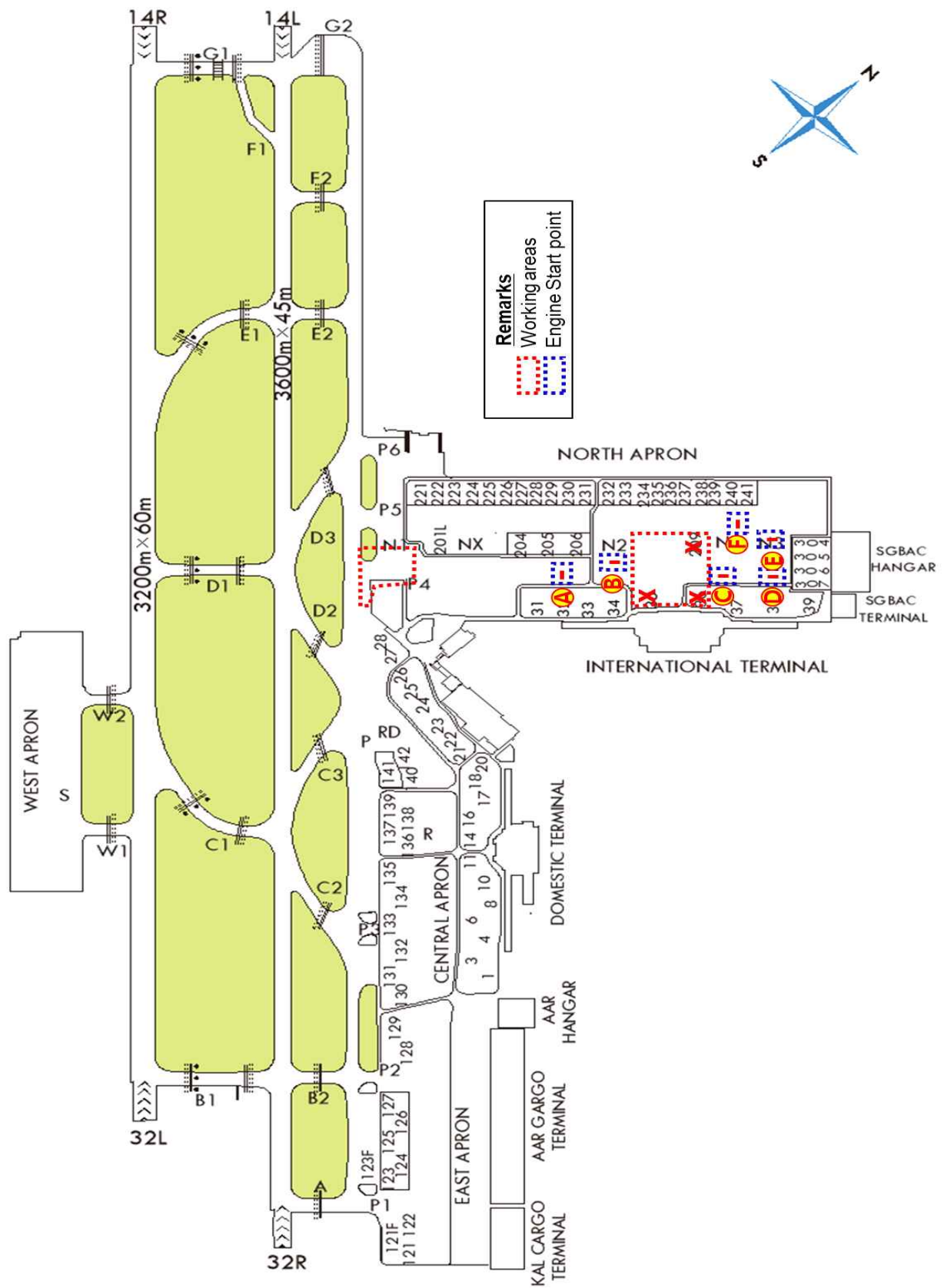
### 4. REMARKS

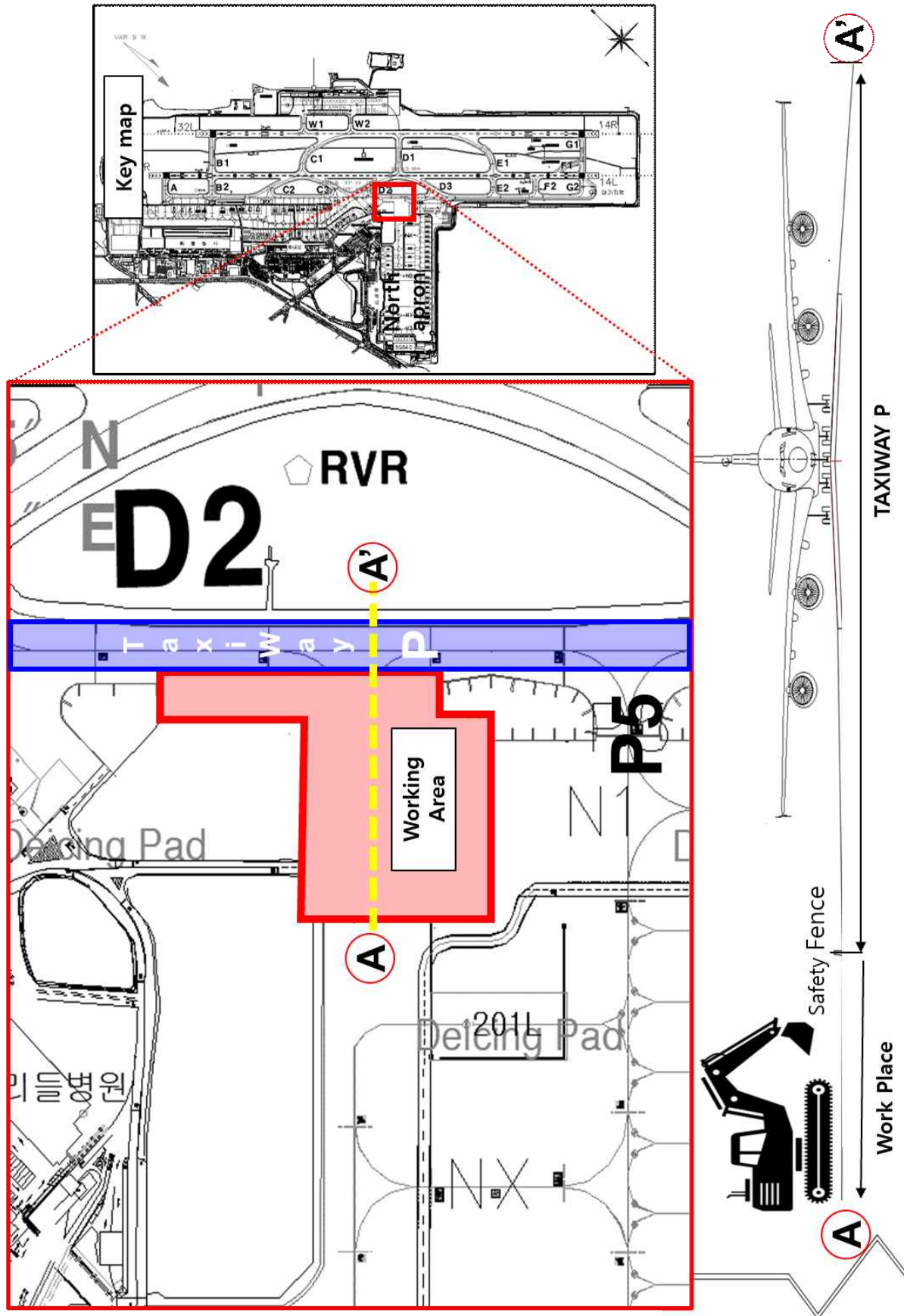
- (1) Safety fences and lights will be installed to indicate the working area.
- (2) ACFT stands 35 to 36, 201/201R(except NR. 201L), 202 to 203, 209 will be closed due to working area.
- (3) During the period, code "F" aircraft taxi procedure will be changed(refer to the diagram NR. 7 standard and low visibility procedure and NR. 8 "F" aircraft available taxi route).
- (4) When low visibility procedures are operated, follow me car service will be available to ACFT taxiing down RWY 32R/14L.

(5) Departure procedures

ACFT Stands	Lead-out Procedures	Phraseology
NR. 31	All ACFT shall be pushed back to face Southwest on P4.	Push back approved
NR. 32~33	All ACFT shall be pushed back to face Southwest on P4 and then towed forward until its nosewheel is at the start point A.	Push back approved at start point A
NR. 34	All ACFT shall be pushed back to face Southeast on N2 until its nosewheel is at the start point B.	Push back approved at start point B
	If instructed to push back approved at start point A, ACFT shall be pushed back to face Southeast on N2 and then towed forward until its nosewheel is at the start point A on P4.	Push back approved at start point A
NR. 37	Code letter "C" ACFT shall be pushed back to face Southwest on P4.	Push back approved
	If instructed to push back approved at start point C, ACFT shall be pushed back to face Southeast on NY until its nosewheel is at the start point C on NY.	Push back approved at start point C
	If instructed to push back approved at start point F, ACFT shall be pushed back to face Southwest on P5 through NY until its nosewheel is at the start point F on P5.	Push back approved at start point F
NR. 38	All ACFT shall be pushed back to face Southeast on NY until its nosewheel is at the start point C.	Push back approved at start point C
	If instructed to push back approved at start point F, ACFT shall be pushed back to face Southwest on P5 through N3 and then towed forward until its nosewheel is at the start point F.	Push back approved at start point F
NR. 39	Code letter "C" ACFT shall be pushed back to face Northeast on P4.	Push back approved
	If instructed to push back approved at start point D, ACFT shall be pushed back to face Southeast on N3 until its nosewheel is at the start point D.	Push back approved at start point D
	If instructed to push back approved at start point F, ACFT shall be pushed back to face Southwest on P5 through N3 and then towed forward until its nosewheel is at the start point F.	Push back approved at start point F
NR. 201L	Self-maneuvering Stands(Up to Code letter "C").	Start-up approved
NR. 204~205	Self-maneuvering Stands(Up to Code letter "D").	Start-up approved
	Code letter "E" ACFT shall be pushed back to face Southwest on P5.	Push back approved
NR. 206	Self-maneuvering Stand(Up to Code letter "D").	Start-up approved
NR. 221~239	All ACFT shall be pushed back to face Southwest on P5.	Push back approved
NR. 240~241	All ACFT shall be pushed back to face Southwest on P5 and then towed forward until its nosewheel is at the start point F.	Push back approved at start point F
	If instructed to push back approved at start point E, ACFT shall be pushed back to face Northwest on N3 until its nosewheel is at the start point E.	Push back approved at start point E
NR. 304~307	All ACFT shall be pushed back to face Northwest on N3 and then towed forward until its nosewheel is at the start point E.	Push back approved at start point E
	If instructed to push back approved at start point D, ACFT shall be pushed back to face Southeast on N3 and then towed forward until its nosewheel is at the start point D.	Push back approved at start point D

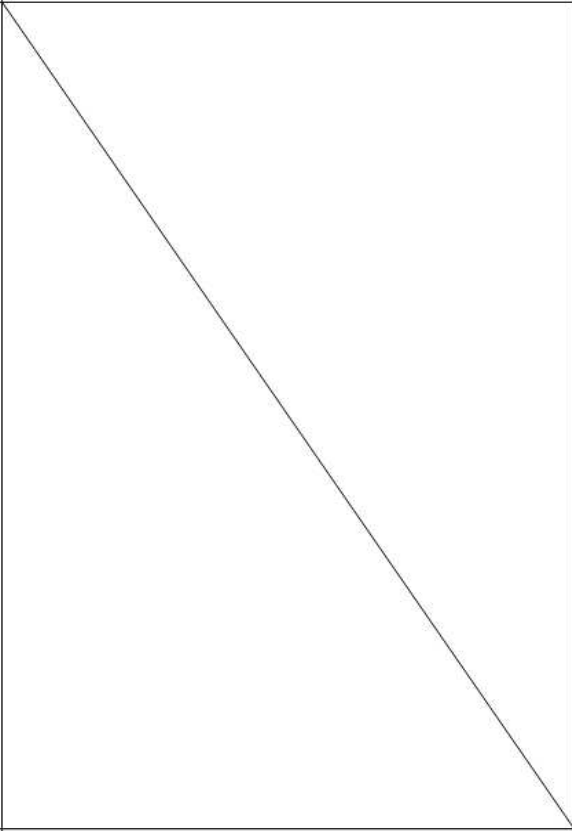
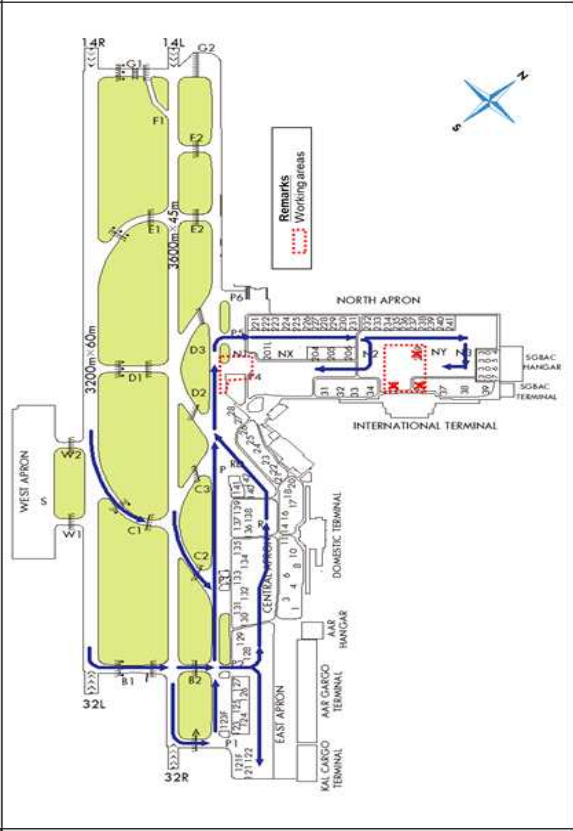
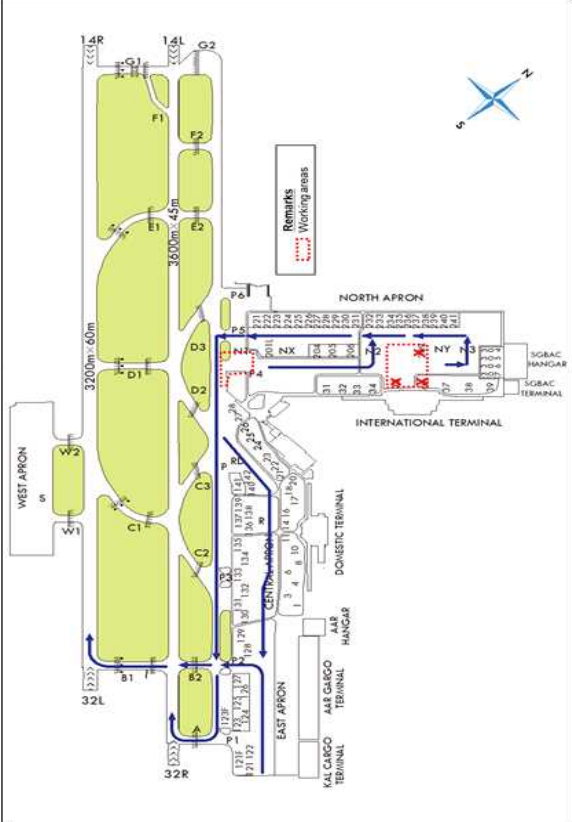
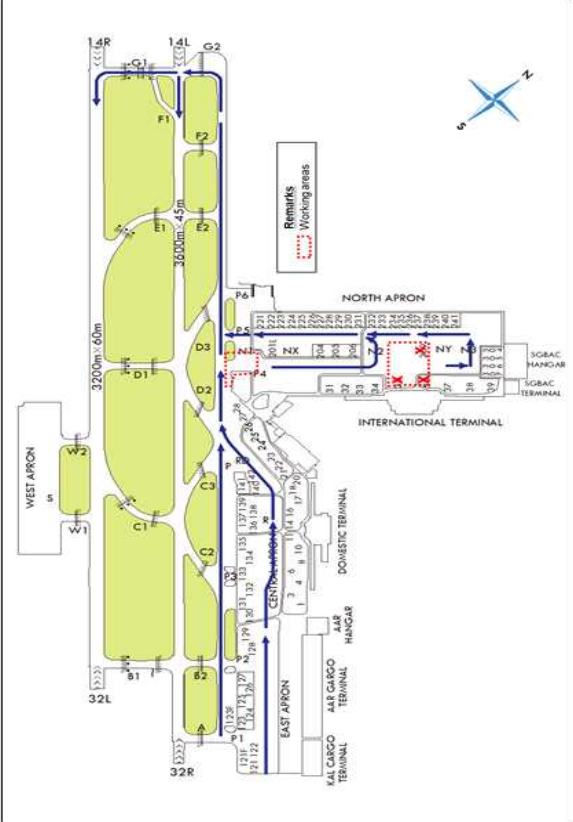
## 5. DIAGRAMS



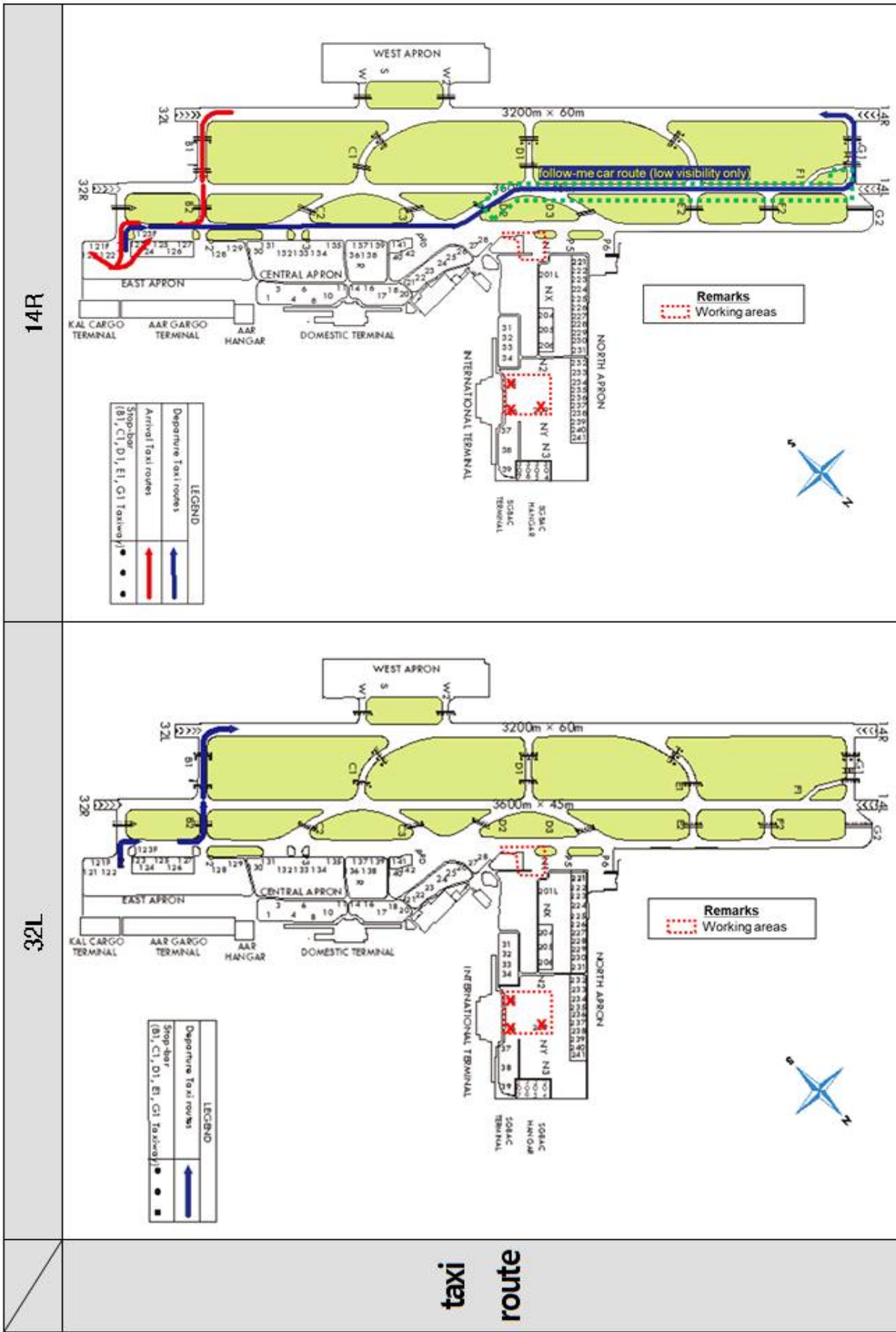


## 6. LOW VISIBILITY PROCEDURES

	Arrival	14R/L
Departure		32R/L



7. STANDARD AND LOW VISIBILITY PROCEDURES (Available for code letter "F" aircraft)





# 8. "F" AIRCRAFT AVAILABLE TAXI ROUTE

