

TEL : 82-53-668-0286
FAX : 82-53-668-0277
AFS : RKRRYNYX
E-mail : aisd@korea.kr
Web : <https://aim.koca.go.kr>

REPUBLIC OF KOREA

Ministry of Land, Infrastructure and Transport
Office of Civil Aviation

11, Doum 6-ro, Sejong-si, 30103, Republic of Korea

AIRAC

AIP

Supplement 70/24

14 NOV 2024

GEN : NIL

ENR : NIL

A D : SEOUL/Gimpo INTL(RKSS)

OPERATIONAL RESTRICTIONS

(Effective : 1600UTC 25 DEC 2024)

1. INTRODUCTION

Some part of P4, aprons(ACFT stands NR. 31 to 34) at Gimpo INTL Airport will be closed as follows due to pavement construction.

2. PERIOD

From 1600 UTC 25 DEC 2024 To 1600 UTC 22 JAN 2025

3. WORKING AREAS (See the diagram below)

Location	Period	Working Hours
Some part of P4, ACFT stands NR. 31 to 34	From 1600 UTC 25 DEC 2024 To 1600 UTC 22 JAN 2025	H24

4. REMARKS

(1) Safety fences and lights will be installed to indicate the working areas.

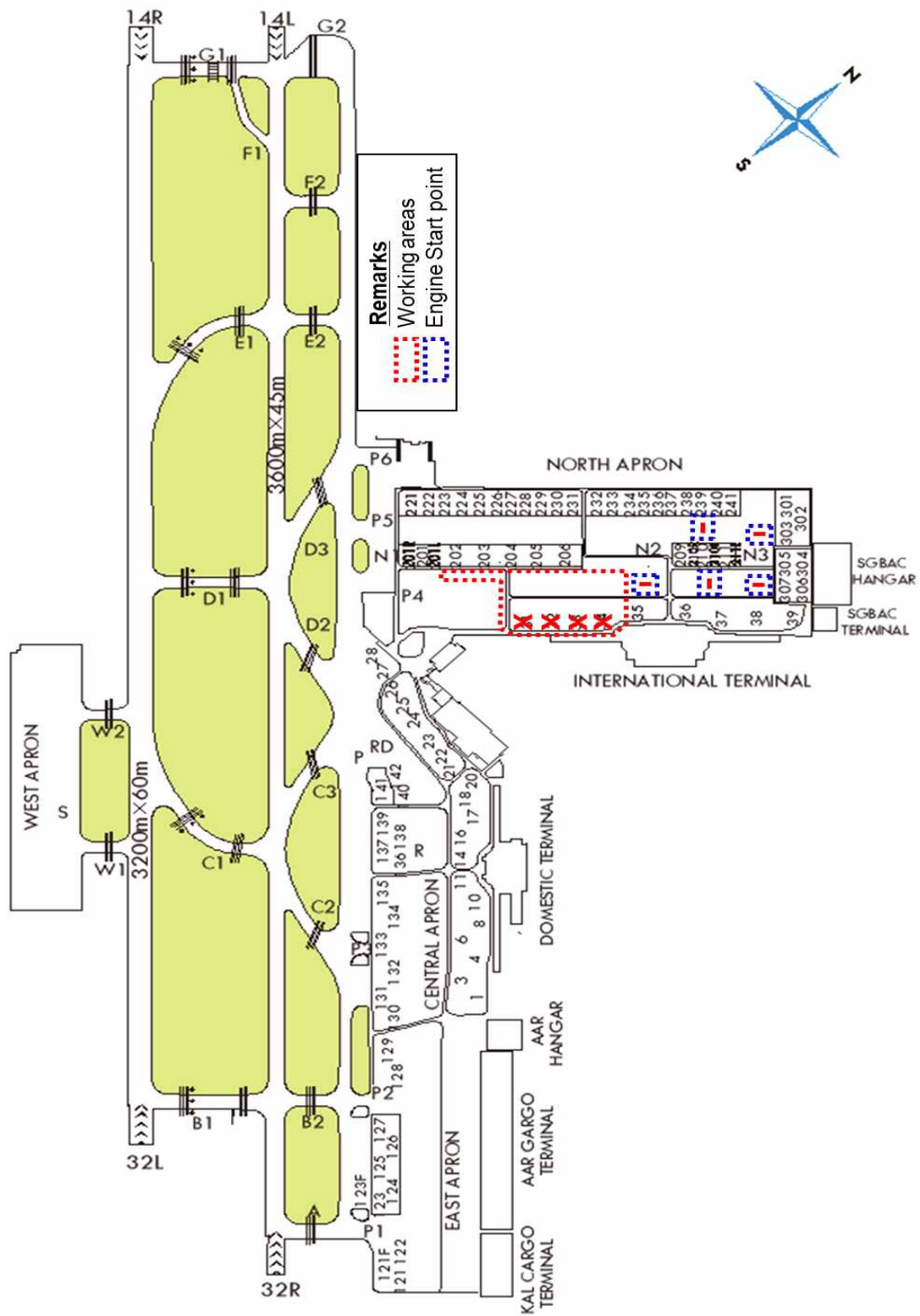
(2) Departure procedures

ACFT Stands	Lead-out Procedures	Phraseology
NR. 35~36	All ACFT shall be pushed back to face southwest on P4.	Push-back approved.
	If instructed to push-back to face southeast on N2 by ATC, ACFT shall be pushed back until its nosewheel is at the designated start point on N2.	Push-back approved on N2.
NR. 37	Code letter "E" ACFT shall be pushed back to face southwest on P4 and then towed forward until its nosewheel is at the designated start point on P4.	Push-back approved and tow forward.
NR. 38~39	All ACFT shall be pushed back to face southeast on N3 until its nosewheel is at the designated start point on N3.	Push-back approved on N3.
NR. 201	Self-maneuvering stands(up to code letter "D")	Start-up approved.
	Code letter "E" ACFT shall be pushed back to face southwest on P5.	Push-back approved.
NR. 202~206	All ACFT shall be pushed back to face southwest on P5.	Push-back approved.
NR. 209, 210, 210R, 210L, 211, 211L	Self-maneuvering stands(up to code letter "D")	Start-up approved.
	Code letter "E" ACFT shall be pushed back to face northeast on P5.	Push-back approved.
NR. 210, 210R, 210L, 211, 211L	If instructed to push-back to face southwest on P5 by ATC, ACFT shall be pushed back to face southwest on P5 and then towed forward until its nosewheel is at the designated start point on P5.	Push-back approved and tow forward.
NR. 221~237	All ACFT shall be pushed back to face southwest on P5.	Push-back approved.
NR. 238~239	All ACFT shall be pushed back to face northeast on P5.	Push-back approved.
	If instructed to push-back to face southwest on P5 by ATC, ACFT shall be pushed back to face southwest on P5 and then towed forward until its nosewheel is at the designated start point on P5.	Push-back approved and tow forward.
NR. 240~241	All ACFT shall be pushed back to face northeast on P5.	Push-back approved.
	If instructed to push-back to face northwest on N3 by ATC, ACFT shall be pushed back to face northwest until its nosewheel is at the designated start point on N3 behind ACFT stand NR. 304.	Push-back approved.
NR. 301~304	All ACFT shall be pushed back to face northeast on P5.	Push-back approved on P5.
	If instructed to push-back to face northwest on N3 by ATC, ACFT shall be pushed back to face northwest on N3 and then towed forward until its nosewheel is at the designated start point on N3 behind ACFT stand NR. 304.	Push-back approved and tow forward.
NR. 305~307	All ACFT shall be pushed back to face southeast on N3 and then towed forward until its nosewheel is at the designated start point on N3 behind ACFT stand NR. 306.	Push-back approved and tow forward.

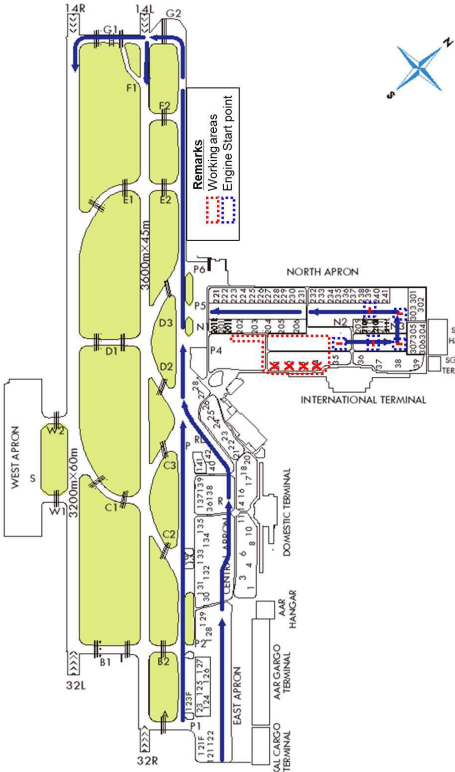
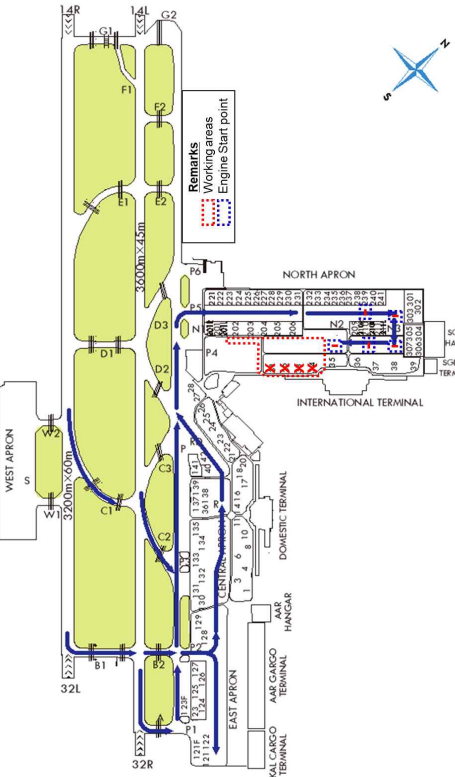
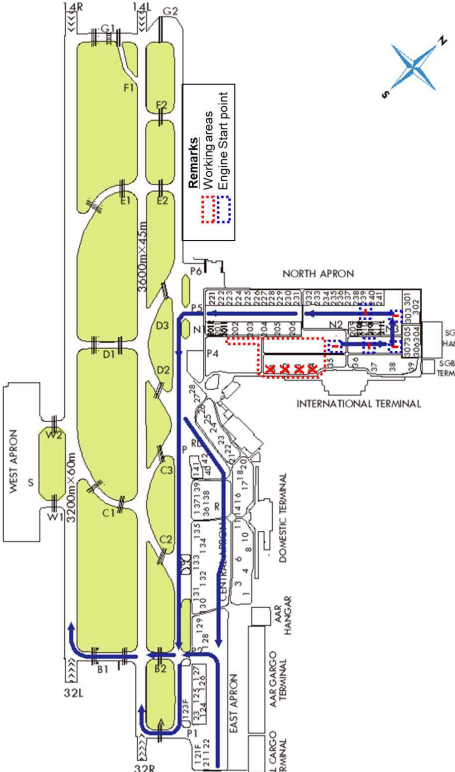
(3) The TWY N2 is not installed with "Taxiway center line lights" and "Intermediate holding position lights".

(4) Any change to the contents of these pages will be notified by NOTAM.

5. DIAGRAM



6. LOW VISIBILITY PROCEDURES

Departure		Arrival	
 <p>Diagram illustrating the departure route for 14R/L. The route starts at the West Apron, proceeds through the East Apron, and then through the North Apron. Key areas include the International Terminal, Domestic Terminal, and various hangars (AAR, KAL, SCBAC). The route is marked with a blue line and includes a 'Remarks' box indicating 'Working areas' and 'Engine Start point'. A compass rose indicates North (N) and South (S).</p>		 <p>Diagram illustrating the arrival route for 14R/L. The route starts at the West Apron, proceeds through the East Apron, and then through the North Apron. Key areas include the International Terminal, Domestic Terminal, and various hangars (AAR, KAL, SCBAC). The route is marked with a blue line and includes a 'Remarks' box indicating 'Working areas' and 'Engine Start point'. A compass rose indicates North (N) and South (S).</p>	
14R/L		 <p>Diagram illustrating the arrival route for 32R/L. The route starts at the West Apron, proceeds through the East Apron, and then through the North Apron. Key areas include the International Terminal, Domestic Terminal, and various hangars (AAR, KAL, SCBAC). The route is marked with a blue line and includes a 'Remarks' box indicating 'Working areas' and 'Engine Start point'. A compass rose indicates North (N) and South (S).</p>	
32R/L			