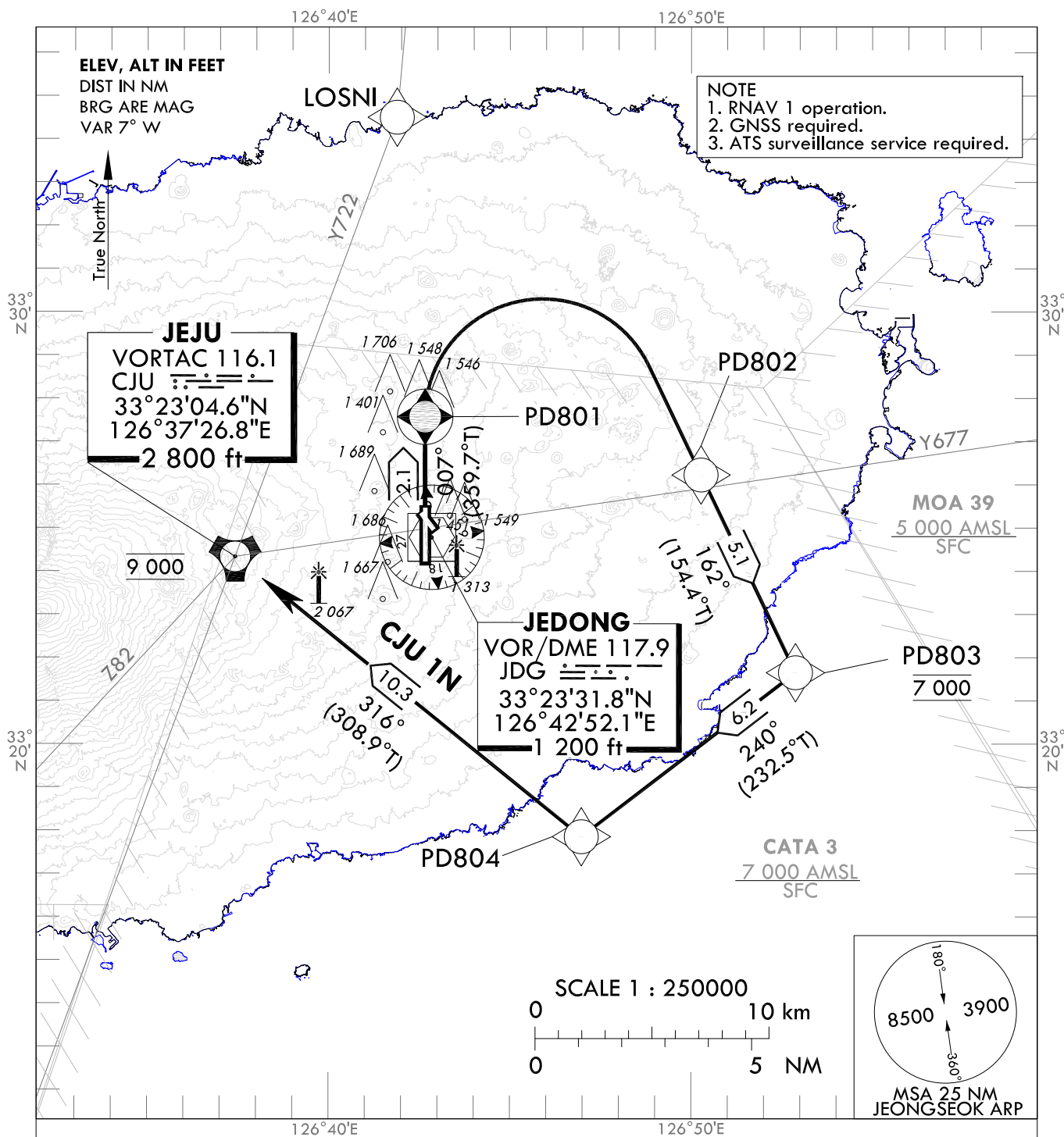


STANDARD DEPARTURE CHART
INSTRUMENT (SID) - ICAO

TRANSITION ALT 14 000
TRANSITION LVL FL 140

JEJU DEP 119.225
JEONGSEOK TWR 124.35

JEJU/Jeongseok(RKPD)
RWY 01
RNAV CJU 1N



GENERAL INFORMATION

1. CJU 1N : 5.8% climb gradient required to 9 000 ft for ATC purpose and avoiding OBST.
2. If unable to comply with flight restrictions or RNAV 1, advise ATC well before departure for alternatives.
3. Departure turn limited to 210 kt IAS maximum until PD804.
4. Within JEJU TMA, maximum 250 kt IAS below 10 000 ft.

RNAV JEJU ONE NOVEMBER DEPARTURE : PD801 - PD802 - PD803 - PD804 - CJU

Change : Withdrawal of Y579.

JEJU/Jeongseok(RKPD)
RWY 01
RNAV CJU 1N

AERONAUTICAL DATA TABULATION

Standard Instrument Departure Procedure Coding Tables

RNAV CJU 1N

Serial Number	Path Descriptor	Waypoint Identifier	Fly-over	Course/Track °M(°T)	Distance (NM)	Turn direction	Altitude (ft)	Speed (kt)	Coordinates	VPA/ RDH	Navigation specification	Remarks
001	CF	PD801	Y	007(359.7)	2.1	-	-	-210	33°26'19.3"N 126°42'40.6"E	-	RNAV 1	-
002	DF	PD802	-	-	-	R	-	-210	33°24'59.1"N 126°50'17.5"E	-	RNAV 1	-
003	TF	PD803	-	162(154.4)	5.1	-	@7 000	-210	33°20'24.7"N 126°52'54.0"E	-	RNAV 1	-
004	TF	PD804	-	240(232.5)	6.2	-	-	-210	33°16'36.5"N 126°47'00.5"E	-	RNAV 1	-
005	TF	CJU	-	316(308.9)	10.3	-	@9 000	-	33°23'04.6"N 126°37'26.8"E	-	RNAV 1	-

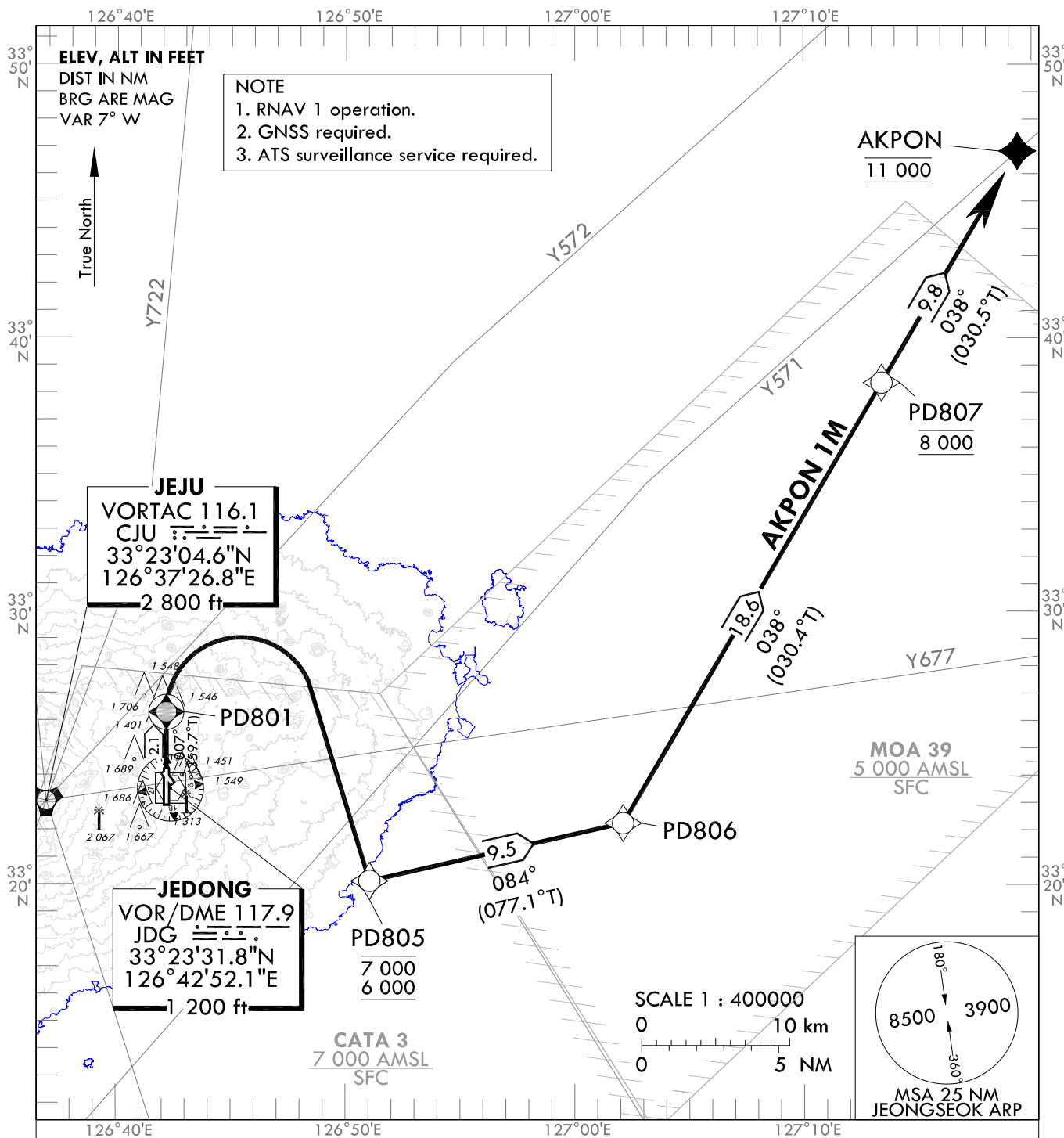
Change : Amended phrases(PD805 → CJU, VPA/TCH → VPA/RDH).

STANDARD DEPARTURE CHART
INSTRUMENT (SID) - ICAO

TRANSITION ALT 14 000
TRANSITION LVL FL 140

JEJU DEP 119.225
JEONGSEOK TWR 124.35

JEJU/Jeongseok(RKPD)
RWY 01
RNAV AKPON 1M



GENERAL INFORMATION

1. AKPON 1M : 6.8% climb gradient required to 6 000 ft for ATC purpose and 5.7% to 2 100 ft for avoiding OBST.
2. If unable to comply with flight restrictions or RNAV 1, advise ATC well before departure for alternatives.
3. Departure turn limited to 210 kt IAS maximum until PD805.
4. Within JEJU TMA, maximum 250 kt IAS below 10 000 ft.

RNAV AKPON ONE MIKE DEPARTURE : PD801 - PD805 - PD806 - PD807 - AKPON

Change : Establishment of standard instrument departure procedure for RWY 01(RNAV AKPON 1M).

JEJU/Jeongseok(RKPD)
RWY 01
RNAV AKPON 1M

AERONAUTICAL DATA TABULATION

Standard Instrument Departure Procedure Coding Tables

RNAV AKPON 1M

Serial Number	Path Descriptor	Waypoint Identifier	Fly-over	Course/Track °M(°T)	Distance (NM)	Turn direction	Altitude (ft)	Speed (kt)	Coordinates	VPA/ RDH	Navigation specification	Remarks
001	CF	PD801	Y	007(359.7)	2.1	-	-	-210	33°26'19.3"N 126°42'40.6"E	-	RNAV 1	-
002	DF	PD805	-	-	-	R	-7 000 +6 000	-210	33°20'09.1"N 126°51'32.7"E	-	RNAV 1	-
003	TF	PD806	-	084(077.1)	9.5	-	-	-	33°22'16.2"N 127°02'36.3"E	-	RNAV 1	-
004	TF	PD807	-	038(030.4)	18.6	-	@8 000	-	33°38'22.3"N 127°13'54.7"E	-	RNAV 1	-
005	TF	AKPON	-	038(030.5)	9.8	-	@11 000	-	33°46'49.6"N 127°19'53.0"E	-	RNAV 1	-

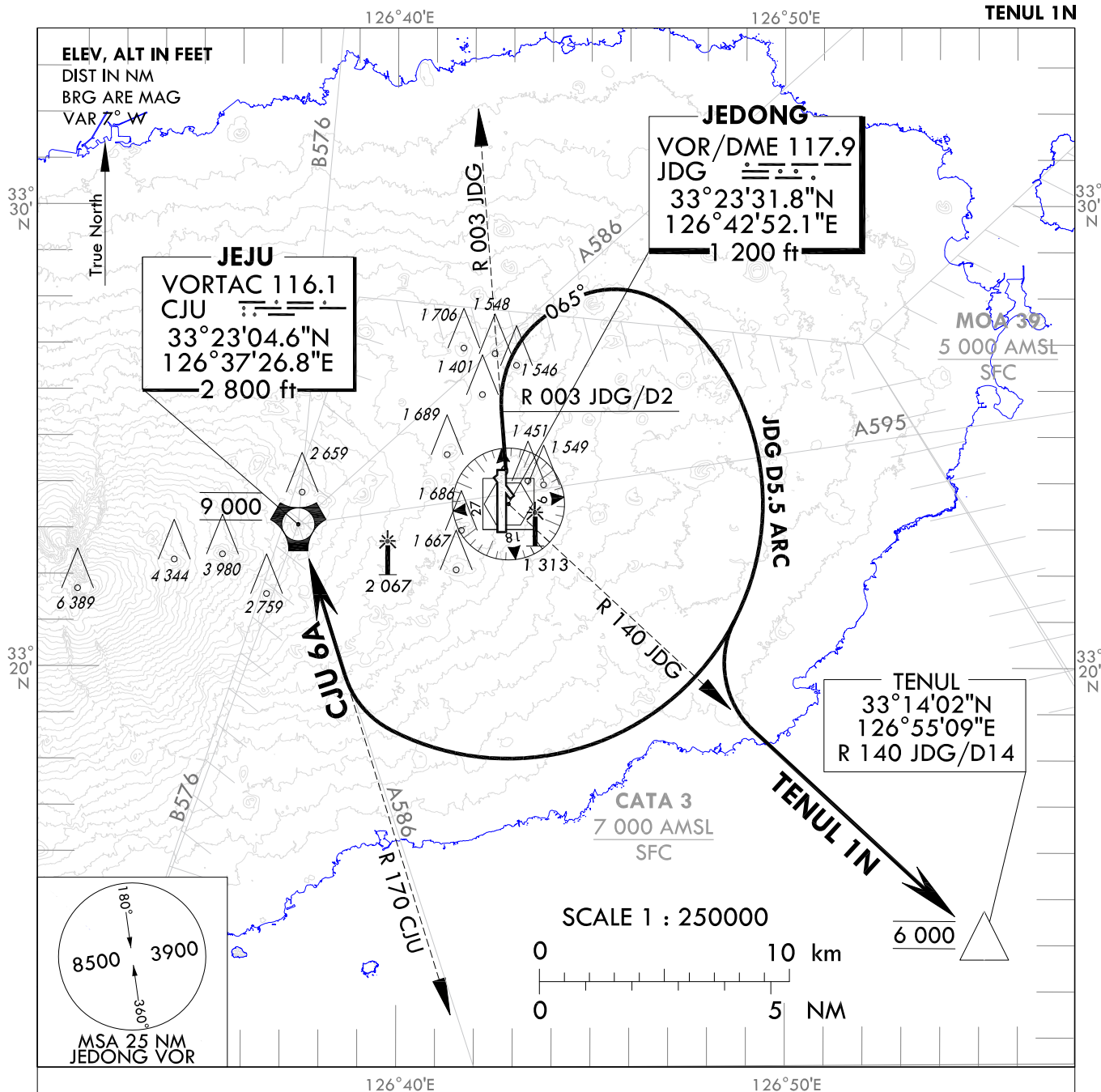
Change : Establishment of standard instrument departure procedure for RWY 01(RNAV AKPON 1M).

STANDARD DEPARTURE CHART
INSTRUMENT (SID) - ICAO

TRANSITION ALT 14 000
TRANSITION LVL FL 140

JEJU DEP 119.225
JEONGSEOK TWR 124.35

JEJU/Jeongseok(RKPD)
RWY 01
CJU 6A
TENUL 1N



JEJU SIX ALPHA DEPARTURE

TAKE OFF RWY 01 : Climb on R 003 JDG until D2, then turn right HDG 065° and proceed via JDG D5.5 Arc to intercept R 170 CJU, then proceed to CJU at 9 000 ft.
Then as directed by ATC. Maintain 9 000 ft until instructed by ATC.

- * Minimum climb gradient 6.3% to 9 000 ft for ATC purpose and 5.4% to 2 100 ft for avoiding OBST.
- * Departure turn limited to maximum of 210 kt IAS.

TENUL ONE NOVEMBER DEPARTURE

TAKE OFF RWY 01 : Climb on R 003 JDG until D2, then turn right HDG 065° and proceed via JDG D5.5 Arc to intercept R 140 JDG, then proceed to TENUL at 6 000 ft.
Then as directed by ATC. Maintain 6 000 ft until instructed by ATC.

- * Minimum climb gradient 6.3% to 6 000 ft for ATC purpose and 5.4% to 2 100 ft for avoiding OBST.
- * Departure turn limited to maximum of 210 kt IAS.

Change : Establishment of standard instrument departure procedures for RWY 01(CJU 6A, TENUL 1N).

INTENTIONALLY

LEFT

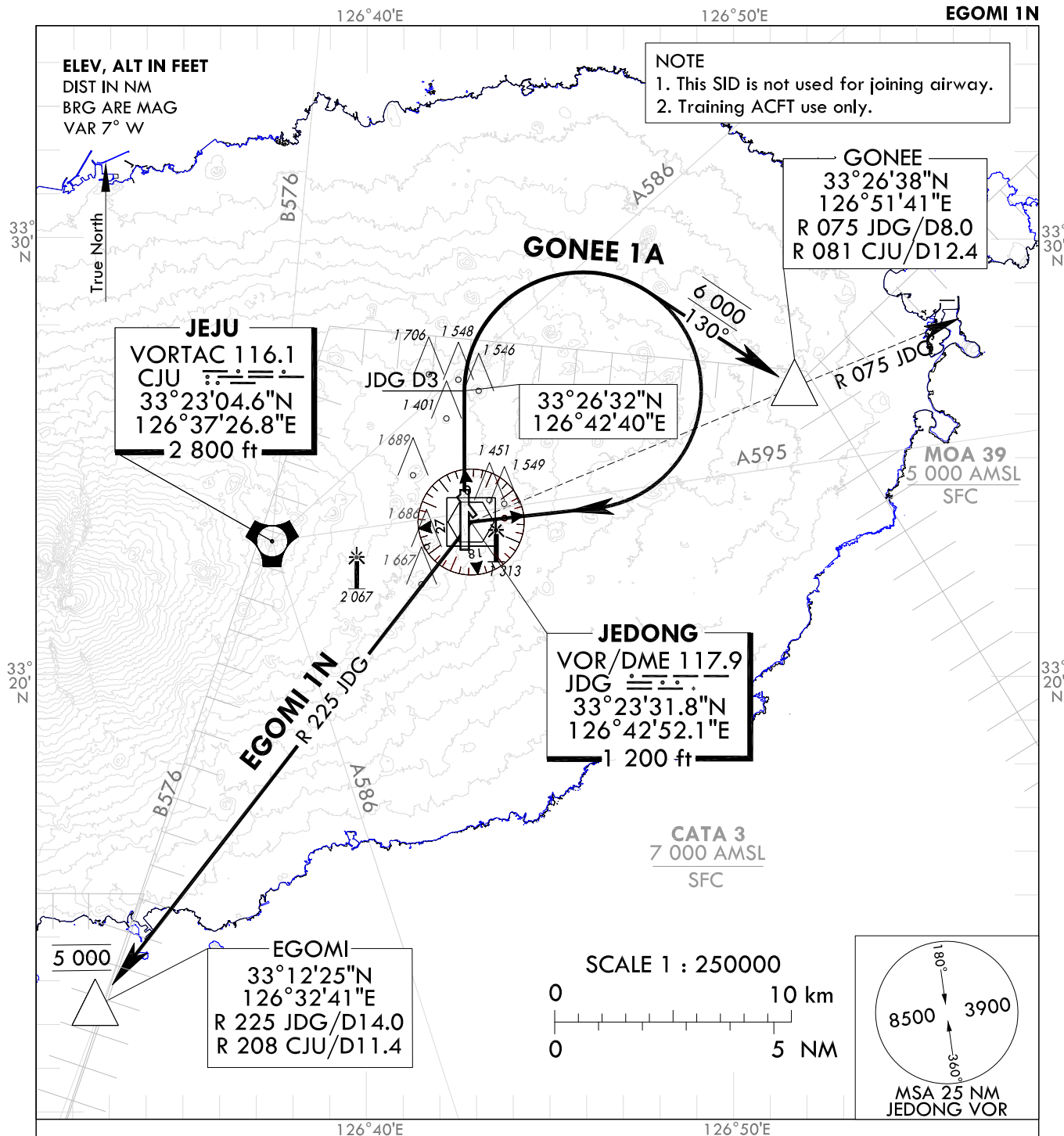
BLANK

STANDARD DEPARTURE CHART
INSTRUMENT (SID) - ICAO

TRANSITION ALT 14 000
TRANSITION LVL FL 140

JEJU DEP 119.225
JEONGSEOK TWR 124.35

JEJU/Jeongseok(RKPD)
RWY 01
GONEE 1A
EGOMI 1N



GONEE ONE ALPHA DEPARTURE

Direct R 004 JDG / D3, turn right HDG 130° to intercept R 075 JDG, proceed to GONEE at 6 000 ft, then as directed by ATC. Maintain 6 000 ft until instructed by ATC.

* Minimum 7.2% CG is required until 6 000 ft for ATC purpose and 5.5% CG is required until 2 100 ft for OBST avoidance.

* Departure turn limited to 210 kt IAS maximum.

EGOMI ONE NOVEMBER DEPARTURE

Direct R 004 JDG / D3, turn right direct to JDG, then proceed on R 225 JDG to EGOMI at 5 000 ft, then as directed by ATC. Maintain 5 000 ft until instructed by ATC.

* Minimum 5.4% CG is required until 5 000 ft for ATC purpose and OBST avoidance.

* Departure turn limited to 210 kt IAS maximum.

Change : Information of standard instrument departure procedures for RWY 01(GONEE 1A, EGOMI 1N).

INTENTIONALLY

LEFT

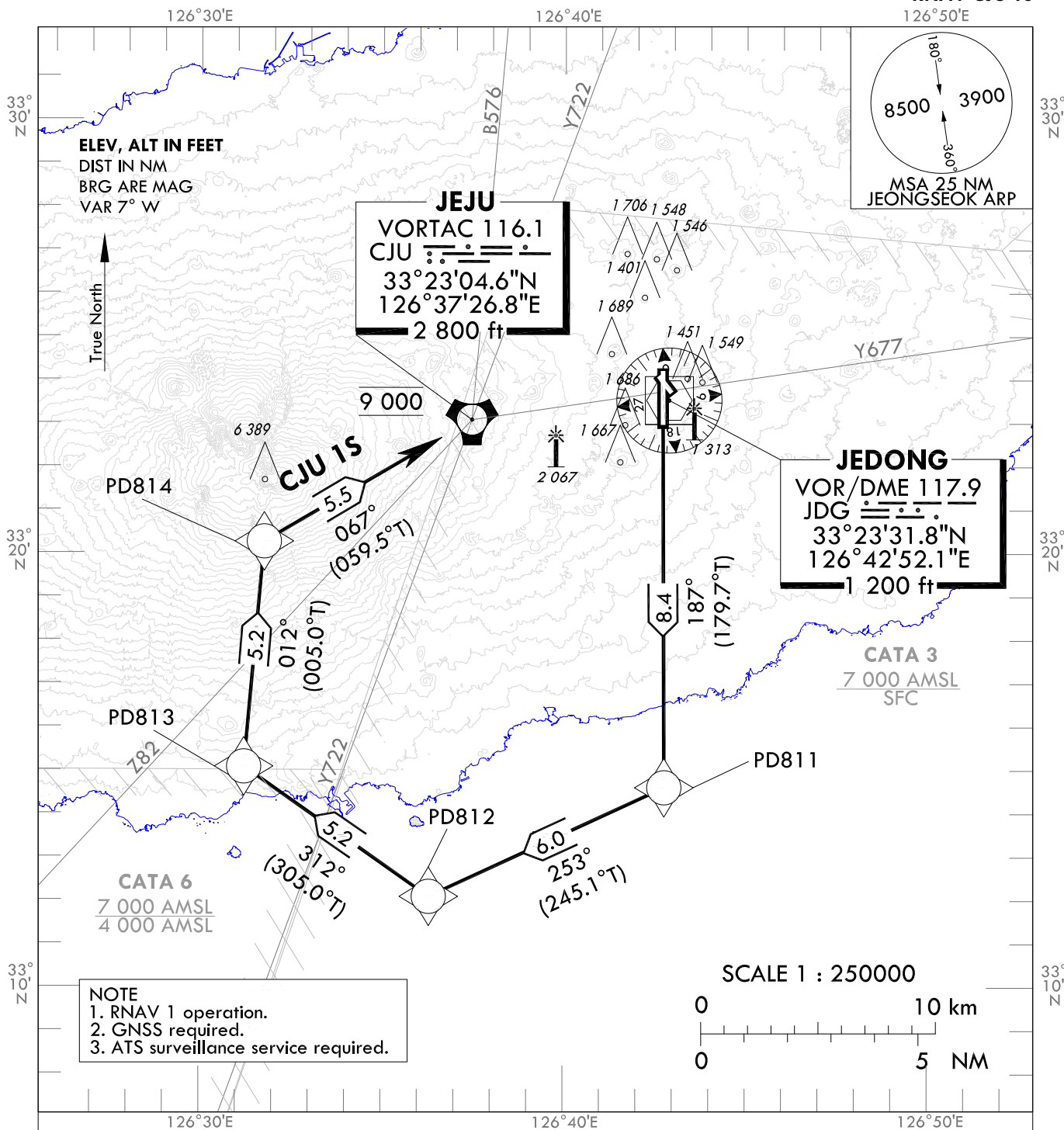
BLANK

STANDARD DEPARTURE CHART
INSTRUMENT (SID) - ICAO

TRANSITION ALT 14 000
TRANSITION LVL FL 140

JEJU DEP 119.225
JEONGSEOK TWR 124.35

JEJU/Jeongseok(RKPD)
RWY 19
RNAV CJU 1S



GENERAL INFORMATION

1. CJU 1S : 5.9% climb gradient required to 9 000 ft for ATC purpose and avoiding OBST.
2. If unable to comply with flight restrictions or RNAV 1, advise ATC before departure for alternatives.
3. Departure turn limited to 210 kt IAS maximum until PD814.
4. Within JEJU TMA, maximum 250 kt IAS below 10 000 ft.

RNAV JEJU ONE SIERRA DEPARTURE : PD811 - PD812 - PD813 - PD814 - CJU

JEJU/Jeongseok(RKPD)
RWY 19
RNAV CJU 1S

AERONAUTICAL DATA TABULATION

Standard Instrument Departure Procedure Coding Tables

RNAV CJU 1S

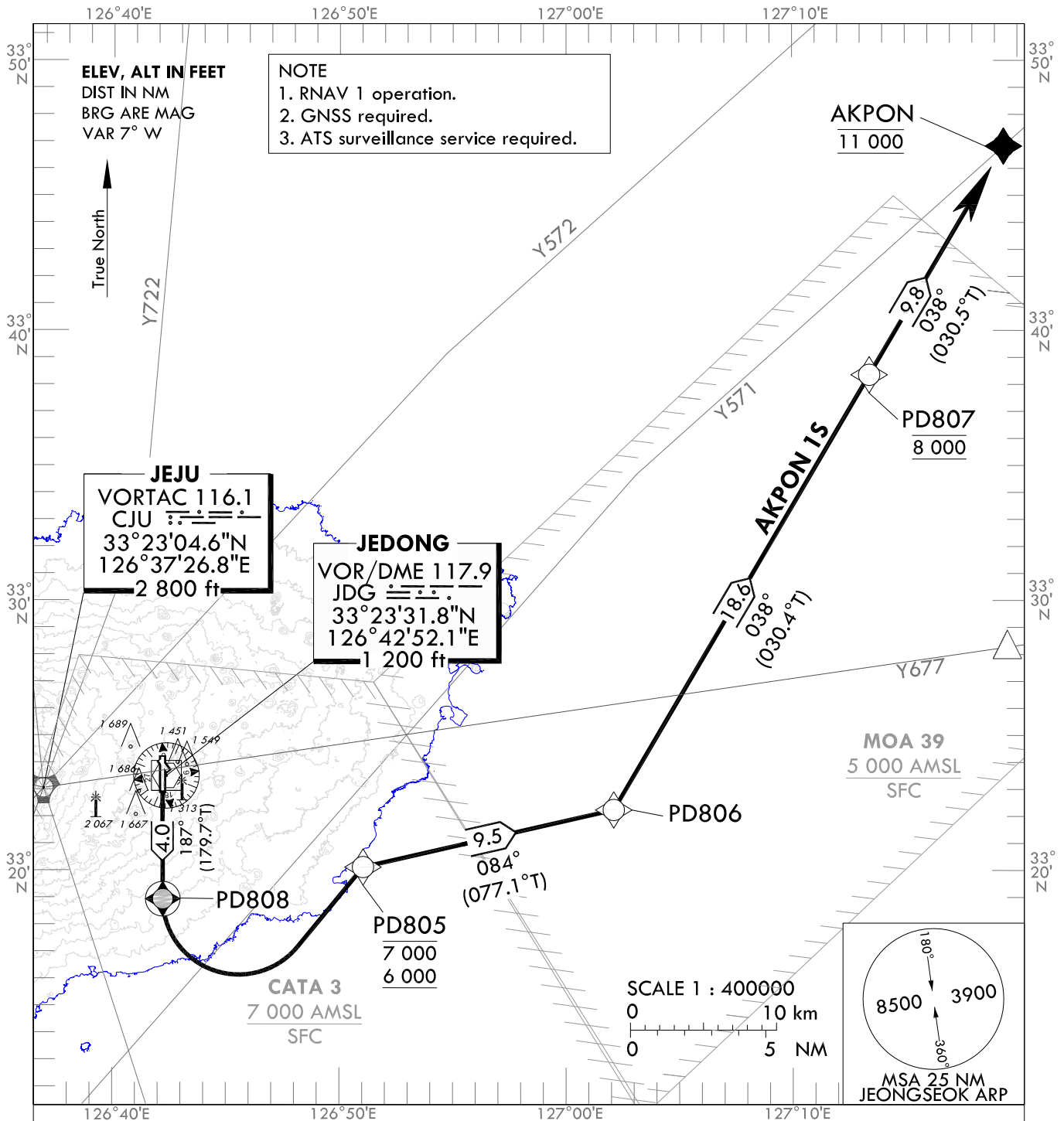
Serial Number	Path Descriptor	Waypoint Identifier	Fly-over	Course/Track °M(°T)	Distance (NM)	Turn direction	Altitude (ft)	Speed (kt)	Coordinates	VPA/ RDH	Navigation specification	Remarks
001	CF	PD811	-	187(179.7)	8.4	-	-	-210	33°14'36.2"N 126°42'44.6"E	-	RNAV 1	-
002	TF	PD812	-	253(245.1)	6.0	-	-	-210	33°12'05.0"N 126°36'17.4"E	-	RNAV 1	-
003	TF	PD813	-	312(305.0)	5.2	-	-	-210	33°15'04.4"N 126°31'12.8"E	-	RNAV 1	-
004	TF	PD814	-	012(005.0)	5.2	-	-	-210	33°20'15.8"N 126°31'45.3"E	-	RNAV 1	-
005	TF	CJU	-	067(059.5)	5.5	-	@9 000	-	33°23'04.6"N 126°37'26.8"E	-	RNAV 1	-

STANDARD DEPARTURE CHART
INSTRUMENT (SID) - ICAO

TRANSITION ALT 14 000
TRANSITION LVL FL 140

JEJU DEP 119.225
JEONGSEOK TWR 124.35

JEJU/Jeongseok(RKPD)
RWY 19
RNAV AKPON 1S



GENERAL INFORMATION

1. AKPON 1S : 7.1% climb gradient required to 6 000 ft for ATC purpose.
2. If unable to comply with flight restrictions or RNAV 1, advise ATC well before departure for alternatives.
3. Departure turn limited to 210 kt IAS maximum until PD805.
4. Within JEJU TMA, maximum 250 kt IAS below 10 000 ft.

RNAV AKPON ONE SIERRA DEPARTURE : PD808 - PD805 - PD806 - PD807 - AKPON

Change : Page control.

OFFICE OF CIVIL AVIATION

AIRAC AIP AMDT 11/24
Effective : 1600UTC 25 DEC 2024

JEJU/Jeongseok(RKPD)
RWY 19
RNAV AKPON 1S

AERONAUTICAL DATA TABULATION

Standard Instrument Departure Procedure Coding Tables

RNAV AKPON 1S

Serial Number	Path Descriptor	Waypoint Identifier	Fly-over	Course/Track °M(°T)	Distance (NM)	Turn direction	Altitude (ft)	Speed (kt)	Coordinates	VPA/ RDH	Navigation specification	Remarks
001	CF	PD808	Y	187(179.7)	4.0	-	-	-210	33°18'57.9"N 126°42'43.1"E	-	RNAV 1	-
002	DF	PD805	-	-	-	L	-7 000 + 6 000	-210	33°20'09.1"N 126°51'32.7"E	-	RNAV 1	-
003	TF	PD806	-	084(077.1)	9.5	-	-	-	33°22'16.2"N 127°02'36.3"E	-	RNAV 1	-
004	TF	PD807	-	038(030.4)	18.6	-	@8 000	-	33°38'22.3"N 127°13'54.7"E	-	RNAV 1	-
005	TF	AKPON	-	038(030.5)	9.8	-	@11 000	-	33°46'49.6"N 127°19'53.0"E	-	RNAV 1	-

STANDARD DEPARTURE CHART
INSTRUMENT (SID) - ICAO

TRANSITION ALT 14 000
TRANSITION LVL FL 140

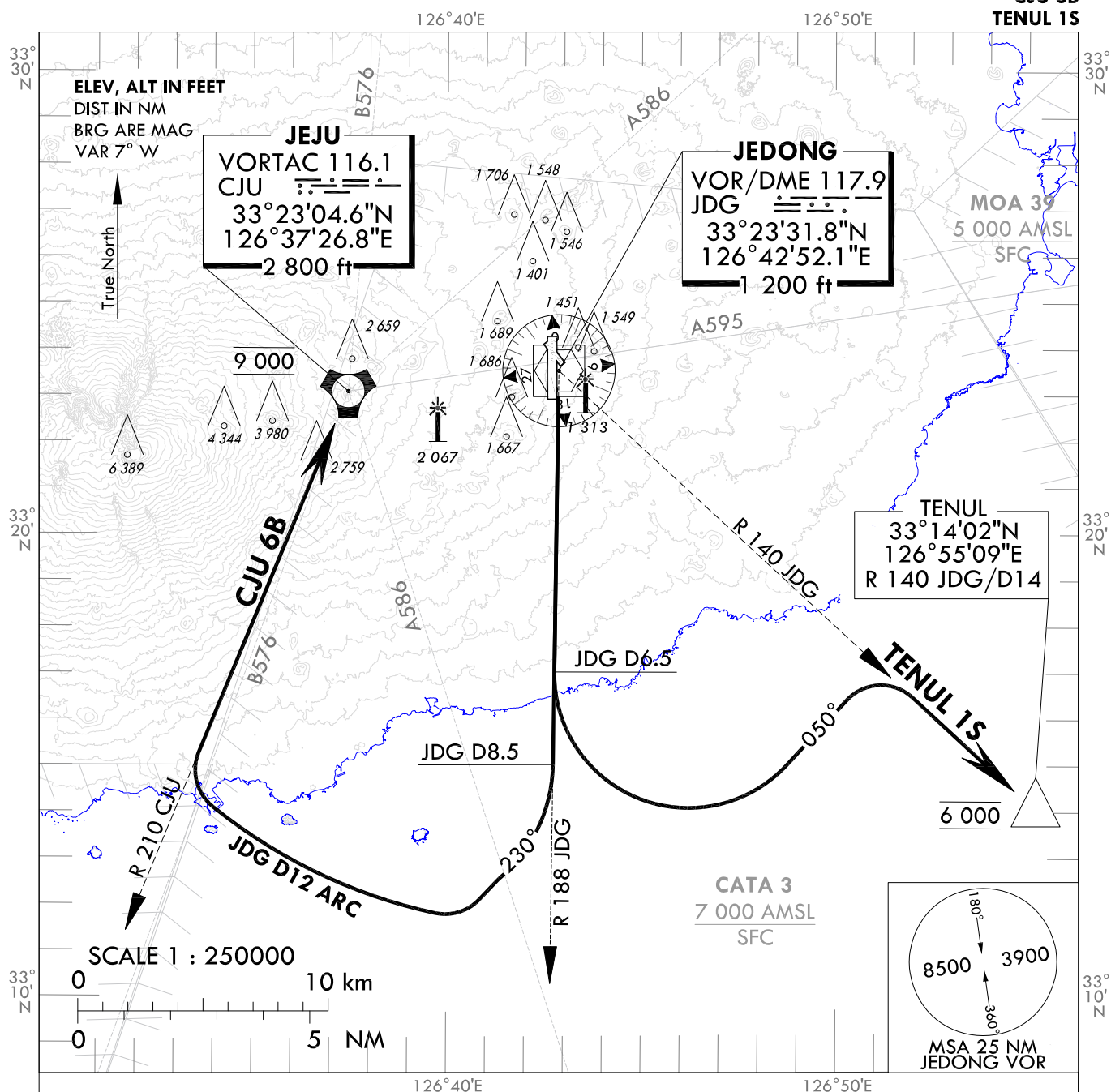
JEJU DEP 119.225
JEONGSEOK TWR 124.35

JEJU/Jeongseok(RKPD)

RWY 19

CJU 6B

TENUL 1S



JEJU SIX BRAVO DEPARTURE

TAKE OFF RWY 19 : Climb on R 188 JDG until D8.5, then turn right HDG 230° and proceed via JDG D12 arc to intercept R 210 CJU, then proceed to CJU at 9 000 ft.

Then as directed by ATC. Maintain 9 000 ft until instructed by ATC.

* Minimum climb gradient 6.3% to 9 000 ft for ATC purpose and 4.2% to 4 800 ft for avoiding OBST.

* Departure turn limited to maximum of 210 kt IAS.

TENUL ONE SIERRA DEPARTURE

TAKE OFF RWY 19 : Climb on R 188 JDG until D6.5, then turn left HDG 050° to intercept R 140 JDG, then proceed to TENUL at 6 000 ft. Then as directed by ATC.

Maintain 6 000 ft until instructed by ATC.

* Minimum climb gradient 6.3% to 6 000 ft for ATC purpose.

* Departure turn limited to maximum of 210 kt IAS.

Change : Establishment of standard instrument departure procedures for RWY 19(CJU 6B, TENUL 1S).

INTENTIONALLY

LEFT

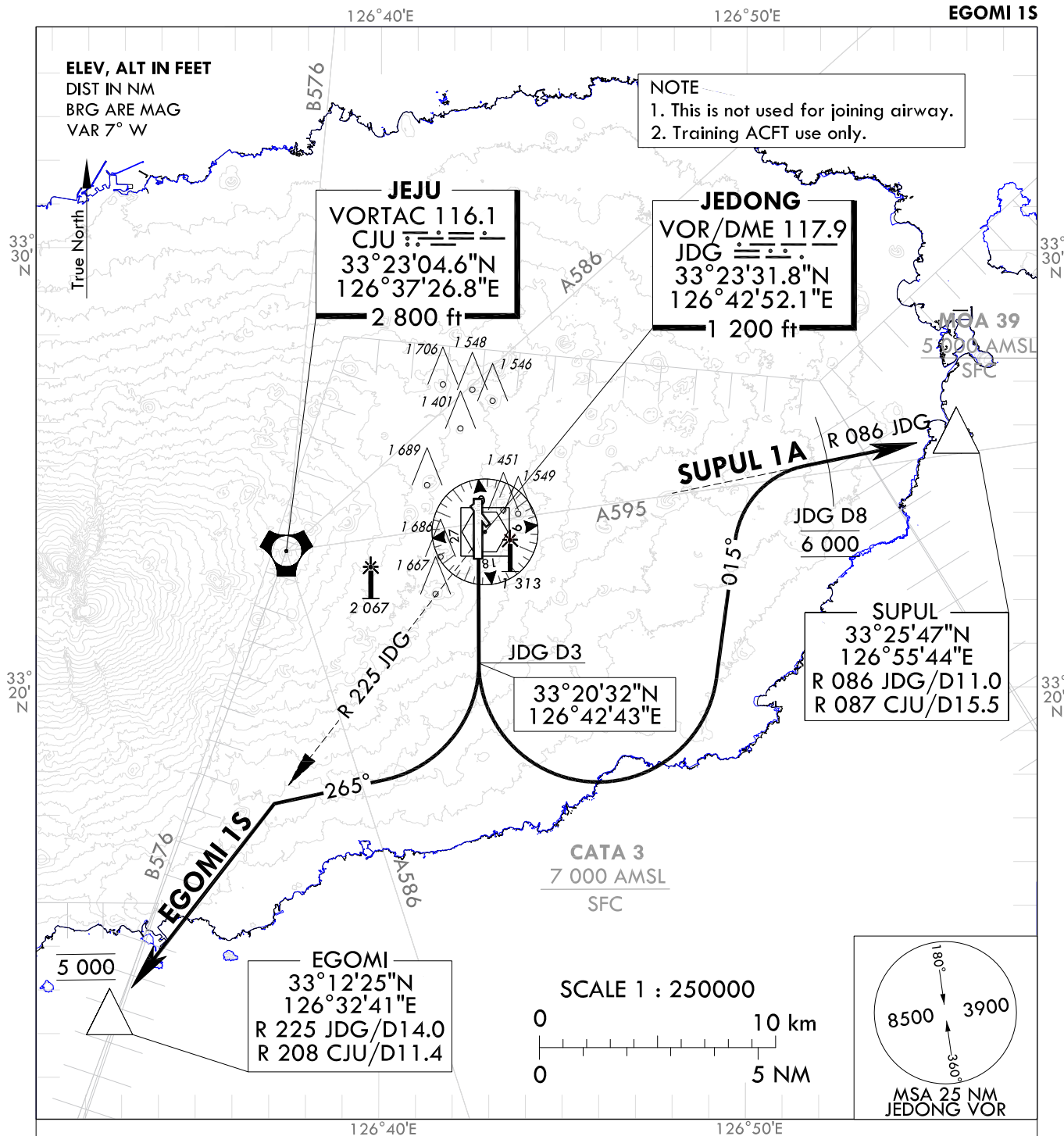
BLANK

STANDARD DEPARTURE CHART
INSTRUMENT (SID) - ICAO

TRANSITION ALT 14 000
TRANSITION LVL FL 140

JEJU DEP 119.225
JEONGSEOK TWR 124.35

JEJU/Jeongseok(RKPD)
RWY 19
SUPUL 1A
EGOMI 1S



SUPUL ONE ALPHA DEPARTURE

Direct R 190 JDG / D3, turn left HGD 015° to intercept R 086 JDG, proceed to SUPUL at 6 000 ft, then as directed by ATC. Reach at 6 000 ft until passing JDG D8. Maintain 6 000 ft until instructed by ATC.

- * Minimum 6.3% CG is required until 6 000 ft for ATC purpose and OBST avoidance.
- * Departure turn limited to 210 kt IAS maximum.

EGOMI ONE SIERRA DEPARTURE

Direct R 190 JDG / D3, turn left HGD 265° to intercept R 225 JDG, proceed to EGOMI at 5 000 ft, then as directed by ATC. Maintain 5 000 ft until instructed by ATC.

- * Minimum 4.5% CG is required until 5 000 ft for ATC purpose and OBST avoidance.
- * Departure turn limited to 210 kt IAS maximum.

Change : Information of standard instrument departure procedures for RWY 19(SUPUL 1A, EGOMI 1S).

INTENTIONALLY

LEFT

BLANK