

TEL : 82-53-668-0286
FAX : 82-53-668-0277
AFS : RKRRYNYX
E-mail : aisd@korea.kr
Web : <https://aim.koca.go.kr>

REPUBLIC OF KOREA

Ministry of Land, Infrastructure and Transport
Office of Civil Aviation

11, Doum 6-ro, Sejong-si, 30103, Republic of Korea

AIRAC

AIP

Supplement 27/23

16 NOV 2023

GEN : NIL

ENR : NIL

A D : SEOUL/Gimpo INTL(RKSS)

OPERATIONAL RESTRICTIONS

1. INTRODUCTION

Some part of P4, aprons(ACFT stands NR. 31 to 34, 202 to 206, 240 to 242, 301 to 303) at Gimpo INTL Airport will be closed as follows due to pavement construction.

2. PERIOD

From 1600 UTC 27 DEC 2023 To 1600 UTC 20 MAR 2024

3. WORKING AREAS (See the diagram below)

| Location | Period | Working Hours |
|--|--|---------------|
| Some part of P4, ACFT stands NR. 31 to 34, 202 to 206, 240 to 242, 301 to 303 | From 1600 UTC 27 DEC 2023 To 1600 UTC 20 MAR 2024 | H24 |

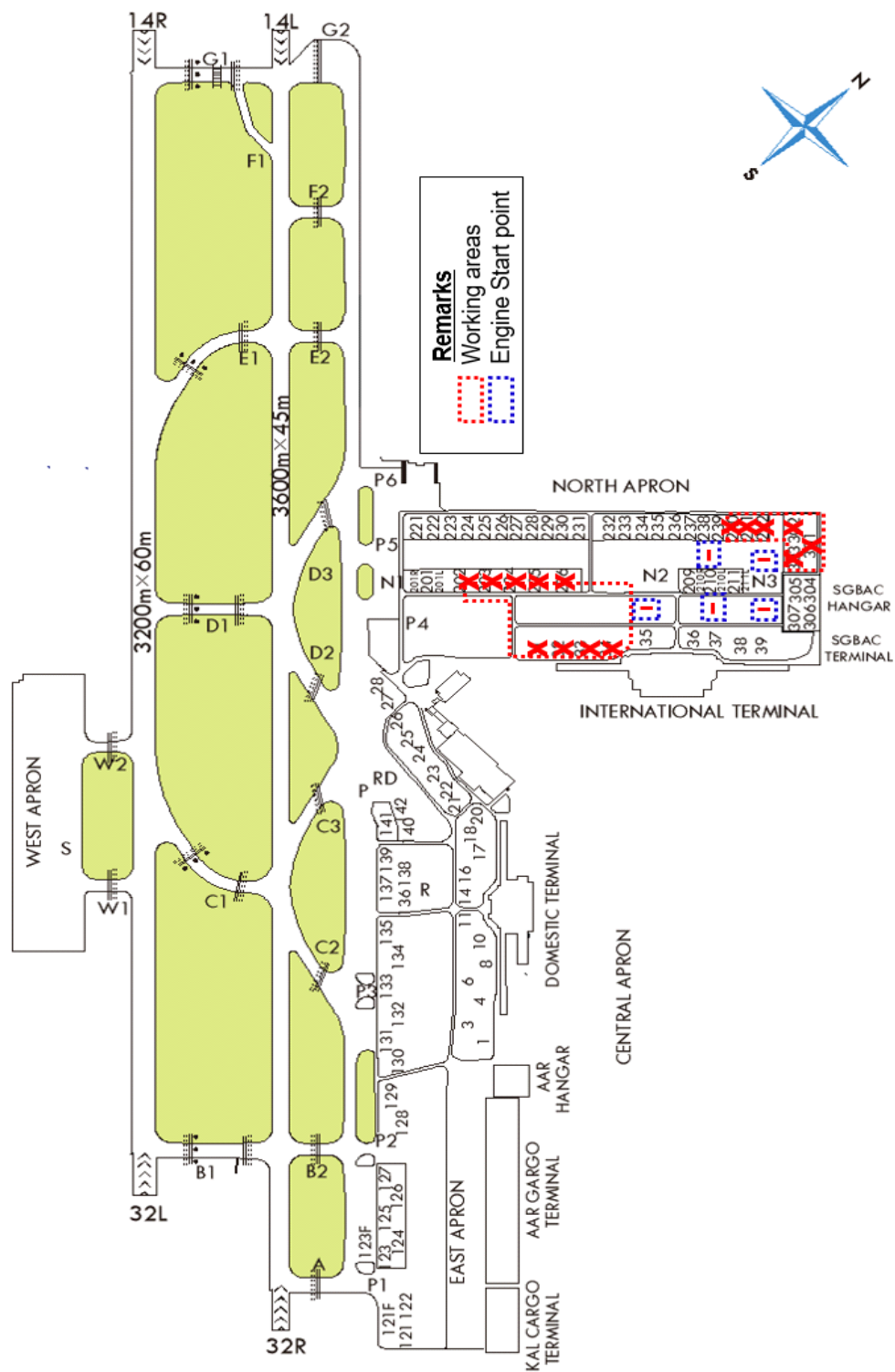
4. REMARKS

- (1) Safety fences and lights will be installed to indicate the working areas.
 (2) Departure procedures

| ACFT Stands | Lead-out Procedures | Phraseology |
|---------------------------|---|-------------------------------------|
| NR. 35 ~ 36 | All ACFT shall be pushed back to face southwest on P4. | Push-back approved. |
| | If instructed to push-back to face southeast on N2 by ATC, ACFT shall be pushed back until its nosewheel is at the designated start point on N2. | Push-back approved on N2. |
| NR. 37 | Code letter "E" ACFT shall be pushed back to face southwest on P4 and then towed forward until its nosewheel is at the designated start point on P4. | Push-back approved and tow forward. |
| NR. 38 ~ 39 | All ACFT shall be pushed back to face southeast on N3 until its nosewheel is at the designated start point on N3. | Push-back approved on N3. |
| NR. 201, NR. 209 ~ 211 | Self-maneuvering stands(Up to code letter "D"). | Start-up approved. |
| NR. 201 | Code letter "E" ACFT shall be pushed back to face southwest on P5. | Push-back approved. |
| | ACFT(Up to code letter "D") engines should operated as idle-power while taxiing via P4 to P TWY. | Start-up approved. |
| NR. 209 ~ 211 | Code letter "E" ACFT shall be pushed back to face northeast on P5. | Push-back approved. |
| NR. 210 ~ 211 | If instructed to push-back to face southwest on P5 by ATC, ACFT shall be pushed back to face southwest on P5 and then towed forward until its nosewheel is at the designated start point on P5. | Push-back approved and tow forward. |
| NR. 221 ~ 237 | All ACFT shall be pushed back to face southwest on P5. | Push-back approved. |
| NR. 238 ~ 239 | All ACFT shall be pushed back to face northeast on P5. | Push-back approved. |
| | If instructed to push-back to face southwest on P5 by ATC, ACFT shall be pushed back to face southwest on P5 and then towed forward until its nosewheel is at the designated start point on P5. | Push-back approved and tow forward. |
| NR. 303 ~ 304 | All ACFT shall be pushed back to face northeast on P5. | Push-back approved on P5. |
| | If instructed to push-back to face northwest on N3 by ATC, ACFT shall be pushed back to face northwest on N3 and then towed forward until its nosewheel is at the designated start point on N3 behind ACFT stand NR. 304. | Push-back approved and tow forward. |
| NR. 305 ~ 307 | All ACFT shall be pushed back to face southeast on N3 and then towed forward until its nosewheel is at the designated start point on N3 behind ACFT stand NR. 306. | Push-back approved and tow forward. |

- (3) The N2 TWY is not installed with "Taxiway center line lights" and "Intermediate holding position lights".
 (4) Any change to the contents of these pages will be notified by NOTAM.

5. DIAGRAM



6. LOW VISIBILITY PROCEDURES

