

RKTU AD 2.1 AERODROME LOCATION INDICATOR AND NAME

RKTU - CHEONGJU / International

RKTU AD 2.2 AERODROME GEOGRAPHICAL AND ADMINISTRATIVE DATA

1	ARP coordinates and site at AD	364259N 1272957E 235° / 1 441 m from THR 24R
2	Direction and distance from city	022°, 8.1 km from Cheongju City Hall
3	Elevation/Reference temperature	58 m (192 ft) / 31.2°C
4	Geoid undulation at AD ELEV PSN	25 m
5	MAG VAR/Annual change	8° W (2020) / 0.092° increasing
6	Aerodrome Operator, Address, Telephone, Telefax, AFS	ROKAF Cheongju Airport Branch Office (Seoul Regional Office of Aviation) 980, Ochang-daero, Neasu-eup, Cheongwon-gu, Cheongju-si, Chungcheongbuk-do 28142, Republic of Korea Tel : +82-43-210-6202,3 Telefax : +82-43-213-6105 AFS : RKTUZIPZX
7	Type of traffic permitted(IFR/VFR)	IFR / VFR
8	Remarks	NIL

RKTU AD 2.3 OPERATIONAL HOURS

1	Aerodrome Operator	H24
2	Customs and Immigration	H24
3	Health and Sanitation	HO
4	AIS Briefing Office	H24
5	ATS Reporting Office	H24
6	MET Briefing Office	H24 (FROM GIMHAE AIRPORT WEATHER OFFICE)
7	ATS	H24
8	Fuelling	H24
9	Handling	HO
10	Security	HO
11	De-icing	H24
12	Remarks	—

RKTU AD 2.4 HANDLING SERVICES AND FACILITIES

1	Cargo handling facilities	Modern facilities
2	Fuel/oil type	Fuel : JET A-1 Oil : Mobil JET II, Aeroshell Turbine oil 560
3	Fuelling facilities/capacity	1. Elevated storage tank 3 units (Total 1 200 000 L, 3 fuel tanks with 400 000 L) 2. Fuelling available by trucks 3. Facility for AV-gas is not provided
4	De-icing facilities	Provide 2 de-icing pad (Refer to Aircraft Parking / Docking chart)
5	Hanger space for visiting aircraft	Not available
6	Repair facilities for visiting aircraft	Not available
7	Remarks	NIL

RKTU AD 2.5 PASSENGER FACILITIES

1	Hotels	Near the AD and in the city
2	Restaurants	40 seats, light food service available
3	Transportation	Buses, Taxis, Train from the AD
4	Medical Facilities	a. Ambulance service available. b. Hospitals in Cheongju city, 7 km
5	Bank and Post Office	Bank available at airport
6	Tourist Office	Available at airport
7	Remarks	www.airport.co.kr/mbs/cheongju

RKTU AD 2.6 RESCUE AND FIRE FIGHTING SERVICES

1	AD Category for fire fighting	CAT 8
2	Rescue equipment	a. 3 chemical fire fighting trucks (Total capacity : 32 000 L water, 4 200 L *AFFF and 750 kg dry chemical) b. 1 ambulance c. 1 mobile command vehicle
3	Capability for removal of disable aircraft	a. Specialized aircraft recovery equipment available for up to and including B747-400 size aircraft. b. 100 ton crane and other accessory equipment can be provided by airlines and agencies. c. Korea Airports Corporation is the co-ordinator for the removal of disabled aircraft and can be reached at Airport Duty Manager. (Tel : +82-43-210-6321)
4	Remarks	*AFFF : Aqueous Film Forming Foam

RKTU AD 2.7 SEASONAL AVAILABILITY - CLEARING

1	Type of clearing equipment	Serviced by ROKAF and KAC * ROKAF : a. Four SE-88 b. Six snow ploughs ** KAC : a. One multipurpose snow removal truck b. Two compact runway jet sweepers c. One thawing material spreader
2	Clearance priorities	1. Runway in use 2. Taxiway serving runway in use 3. Apron
3	Remarks	Snow clearance information promulgated by SNOWTAM * Republic of Korea Air Force(ROKAF) ** Korea Airports Corporation(KAC)

Change : Information of rescue and fire fighting services.

RKTU AD 2.8 APRONS, TAXIWAYS AND CHECK LOCATIONS / POSITIONS DATA

1	Designation, Apron surface and strength	Surface : Concrete Strength : PCN 85/R/B/W/T - ACFT stands NR. 1~13, 71~78	
2	Designation, Taxiway width, surface and strength	E1	Width : 36 m Surface : Asphalt, Concrete Strength : PCN 64/F/A/X/T PCN 64/R/B/X/T
		E2	Width : 30 m Surface : Asphalt Strength : PCN 64/F/A/X/T
		A3	Width : 25 m Surface : Asphalt Strength : PCN 69/F/B/X/T
		B3	Width : 33 m Surface : Asphalt Strength : PCN 64/F/A/X/T
		B4	Width : 33 m Surface : Asphalt Strength : PCN 64/F/A/X/T
		C3	Width : 33 m Surface : Concrete Strength : PCN 73/R/B/X/T
		D3	Width : 28 m Surface : Concrete Strength : PCN 73/R/B/X/T
		E	Width : 23 m Surface : Asphalt, Concrete Strength : PCN 69/F/B/X/T PCN 73/R/B/X/T (TWY C3, D3 Intersection)
3	Altimeter checkpoint location and elevation	All Aprons : 52 m	
4	VOR checkpoints	VOR : NIL	
5	INS checkpoints	INS : See Aircraft Parking/Docking Chart	
6	Remarks	NIL	

RKTU AD 2.9 SURFACE MOVEMENT GUIDANCE AND CONTROL SYSTEM AND MARKINGS

1	Use of aircraft stand ID signs, TWY guide lines and visual docking/parking guidance system of aircraft stands	Taxiing guidance signs at all intersections with TWY and RWY and holding position, Guide lines at apron Nose-in guidance at aircraft stands.
2	RWY and TWY markings and LGTs	<p>a. RWY</p> <p>1) Lights</p> <ul style="list-style-type: none"> - RWY 06L - Edge, THR, end - RWY 24R - Edge, THR, end <p>2) Markings</p> <ul style="list-style-type: none"> - RWY 06L : Designation, THR, TDZ, Center Line, Side Stripe, Aiming point marked - RWY 24R : Designation, THR, TDZ, Center Line, Side Stripe, Aiming point marked <p>b. TWY</p> <p>1) Lights</p> <ul style="list-style-type: none"> - TWY edge lights : All TWY <p>2) Marking</p> <ul style="list-style-type: none"> - TWY & taxilane centerline marked - Holding position at TWY/RWY, intersections marked
3	Stop bars	NIL
4	Remarks	NIL

RKTU AD 2.10 AERODROME OBSTACLES

In Area 2					
OBST ID/ Designation	OBST type	OBST position	ELEV/HGT	Markings/ Type, colour	Remarks
a	b	c	d	e	f
RKTUOB001	Mt. Dutae	364949.5N 1273358.7E	1 962 ft/	NIL	24R/APCH 06L/TKOF In circling area and at AD
RKTUOB002	KBS Antenna	364310.2N 1272741.7E	407 ft/	LGTD	In circling area and at AD
RKTUOB003	Mt. Bokwang	364918.6N 1274101.3E	1 828 ft/	NIL	24L/APCH 06R/TKOF
In Area 3					
OBST ID/ Designation	OBST type	OBST position	ELEV/HGT	Markings/ Type, colour	Remarks
a	b	c	d	e	f
NIL					
Remarks					
1. Caution Arresting gears are installed. - Bak-12(on the RWY) - Barriers(on the over runway) RSU(RWY Supervisor Unit)s are installed in the east side of RWY 06R/24L.					

RKTU AD 2.11 METEOROLOGICAL INFORMATION PROVIDED

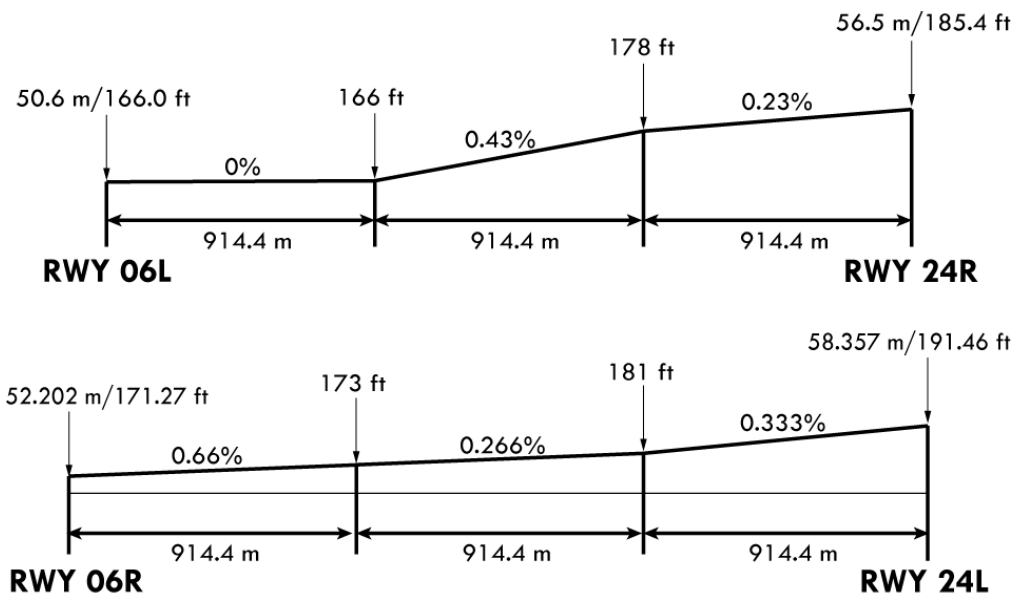
1	Associated MET Office	Cheongju Airforce MET Office
2	Hours of service MET Office outside hours	H24
3	Office responsible for TAF preparation Periods of validity	ROKAF MET Office 30 hours at 0000, 0600, 1200, 1800 UTC
4	Trend forecast Interval of issuance	NIL
5	Briefing/consultation provided	Available at Aviation Meteorological Office for 24 hours, if required
6	Flight documentation language(s) used	Aerodrome forecasts(TAF code form), SIGWX charts, WITEM charts, SIGMET information in English.
7	Charts and other information available for briefing or consultation	Analysis charts(surface and upper air), Prognostic charts, Graphic displays and other model outputs
8	Supplementary equipment available for providing information	Satellite and weather radar imageries
9	ATS units provided with information	FIC and TWR
10	Additional information (limitation of service, etc.)	All observation data, model outputs and forecasts produced by KMA and WAFS are available at the office through internet link

Change : Information of ELEV/HGT for RKTUOB001(2 045 ft → 1 962 ft).

RKTU AD 2.12 RUNWAY PHYSICAL CHARACTERISTICS

Designations RWY NR	TRUE BRG	Dimension of RWY(m)	Strength(PCN) and surface of RWY and SWY	THR coordinates RWY end coordinates THR geoid undulation	THR elevation and highest elevation of TDZ of precision APP RWY
1	2	3	4	5	6
06L	052.42°	2 744 × 60	85/R/B/W/T Concrete	364236.10N 1272912.46E - GUND 24.9 m	THR 50.6 m / 166.0 ft TDZ 50.5 m / 165.7 ft
24R	232.43°	2 744 × 60	85/R/B/W/T Concrete	364330.38N 1273040.05E - GUND 25.0 m	THR 56.5 m / 185.4 ft TDZ 55.5 m / 182.1 ft
06R	052.43°	2 744 × 45	81/R/B/W/T	364228.26N 1272914.84E GUND 25.0 m	THR 52.202 m / 171.27 ft TDZ 52.67 m / 172.80 ft
24L	232.43°	2 744 × 45	81/R/B/W/T	364322.53N 1273042.46E GUND 25.0 m	THR 58.357 m / 191.46 ft TDZ 58.357 m / 191.46 ft

7. Slope of RWY



SWY dimensions(m)	CWY dimensions(m)	Strip dimensions(m)	RESA dimensions(m)	Location & description of arresting system	OFZ	Remarks
8	9	10	11	12	13	14
-	-	2 864 × 300	240 × 120	ACFT arresting system are installed at each RWY THR. - BAK 12 (1 400 ft from the end of RWY 06L)	-	The surface of RWY 06L/24R are grooved. (Except 300 m inward from each THR RWY 06L/24R.)
-	-	2 864 × 300	240 × 120	- BAK 14 (1 700 ft from the end of RWY 24R) Barrier(MA-1A MOD/1.7 m) - End of RWY	-	
-	-	2 864 × 300	-	ACFT arresting system are installed at each RWY THR. - BAK 12 (1 700 ft from the end of RWY 06R)	-	The surface of RWY 06L/24R are grooved.
-	-	2 864 × 300	-	- BAK 12 (1 700 ft from the end of RWY 24L)	-	

Change : Information of THR ELEV for RWY 06L/R and 24L/R.

RKTU AD 2.13 DECLARED DISTANCES

RWY Designator	TORA (m)	TODA (m)	ASDA (m)	LDA (m)	Remarks
1	2	3	4	5	6
06L	2 744	2 744	2 744	2 744	NIL
06L	744	744	744	744	Take-off from intersection with TWY B3
06L	1 349	1 348	1 348	1 348	Take-off from intersection with TWY B4
06L	1 929	1 929	1 929	1 929	Take-off from intersection with TWY C3
24R	2 744	2 744	2 744	2 744	NIL
24R	2 000	2 000	2 000	2 000	Take-off from intersection with TWY B3
24R	1 395	1 395	1 395	1 395	Take-off from intersection with TWY B4
24R	815	815	815	815	Take-off from intersection with TWY C3

RKTU AD 2.14 APPROACH AND RUNWAY LIGHTING

RWY Designator	APCH LGT type LEN INTST	THR LGT Color WBAR	VASIS (MEHT) PAPI	TDZ LGT LEN	RWY Center Line LGT LEN, Spacing Color, INTST	RWY edge LGT LEN, Spacing Color, INTST	RWY End LGT Color WBAR	SWY LGT LEN(m) Color	Remarks
1	2	3	4	5	6	7	8	9	10
06L	SSALR 720 m LIH	Green Green	PAPI Both / 3° (48 ft)	NIL	NIL	2 744 m 60 m White LIH	Red -	NIL	NIL
24R	ALSFI 900 m LIH	Green Green	PAPI Both / 3° (59 ft)	NIL	NIL	2 744 m 60 m White LIH	Red -	NIL	NIL
06R	SALS 450 m LIH	Green	PAPI Both / 3° (51 ft)	NIL	NIL	2 744 m 45 m White LIH	Red	NIL	NIL
24L	ALSFI 900 m LIH	Green	PAPI Both / 3° (48 ft)	900 m	2 744 m 15 m White/Red LIH	2 744 m 45 m White LIH	Red	NIL	NIL

RKTU AD 2.15 OTHER LIGHTING, SECONDARY POWER SUPPLY

1	ABN/IBN location, characteristics and hours of operation	ABN : At ROKAF hangar building, FLG W/W-G (18 FPM*) / H24 IBN : NIL * FPM : Flash Per Minute
2	LDI location and LGT Anemometer location and LGT	NIL Anemometer : 469 m from RWY 24R THR and LGT
3	TWY edge and center line lighting	Edge : TWY of Civil Aviation at RWY 06L - 24R TWY Center line lights : NIL
4	Secondary power supply/switch-over time	Secondary power supply to all lighting at RWY 06L-24R Switch-over time : 1 or 15 seconds according to kind of light (Complied with ICAO requirements)
5	Remarks	NIL

Change : Information of MEHT.

RKTU AD 2.16 HELICOPTER LANDING AREA

1	Coordinates TLOF or THR of FATO Geoid undulation	—
2	TLOF and/or FATO elevation M/FT	—
3	TLOF and FATO area dimensions, surface, strength and marking	—
4	True BRG of FATO	—
5	Declared distance available	—
6	APP and FATO lighting	—
7	Remarks	As directed by ATC

RKTU AD 2.17 ATS AIRSPACE

1	Designation and lateral limit	Cheongju CTR A circle, 5 NM radius centered at ARP
2	Vertical limits	SFC to 5 000 ft AGL
3	Airspace classification	Class D
4	ATS unit call sign Languages	CHEONGJU TOWER Korean and English
5	Transition altitude	14 000 ft AMSL
6	Operational Hours	H24
7	Remarks	NIL

RKTU AD 2.18 ATS COMMUNICATION FACILITIES

Service designation	Call sign	Channel	Hours of operation	Remarks
1	2	3	4	5
DEP	Jungwon Departure	129.65 MHz	H24	
APP	Jungwon Approach	134.0 MHz	H24	
ARR	Cheongju GCA	134.4 MHz 134.1 MHz	H24	
TWR	Cheongju Tower	118.7 MHz 126.2 MHz	H24	
GND	Cheongju Ground	121.875 MHz	H24	Scheduled Inspection Time : TWR(118.7 MHz), GND, ATIS Every 3rd THU(1400-2000 UTC) of the month.
ATIS	Cheongju INTL Airport	128.85 MHz 305.5 MHz	H24	
EMERG		121.5 MHz 243.0 MHz	H24	

RKTU AD 2.19 RADIO NAVIGATION AND LANDING AIDS

Type of aid, MAG VAR Type of supported OPS	ID	Frequency	Hours of operation	Position of transmitting antenna coordinates	Elevation of DME transmitting antenna	Remarks
1	2	3	4	5	6	7
VOR/DME (8° W/2020)	CHO	109.00 MHz (CH 27X)	H24	364304.9N 1272938.7E	90 m	Scheduled Inspection Time Every 4th THU(1400-2000 UTC) of the month VOR/DME Unusable - VOR · RDL 20 Clockwise RDL 40 beyond 14 NM, below 5 500 ft · RDL 120 Clockwise RDL 160 beyond 20 NM, below 7 000 ft - DME · RDL 20 Clockwise RDL 40 beyond 14 NM, below 5 500 ft · RDL 120 Clockwise RDL 160 beyond 20 NM, below 7 000 ft
LOC 24R (8° W/2020)	ICHG	111.70 MHz	H24	364230.0N 1272902.6E		Scheduled Inspection Time Every 1st THU(1400-2000 UTC) of the month
GP 24R		333.5 MHz	H24	364327.4N 1273027.7E		
DME 24R	ICHG	1015 MHz (CH 54X)	H24	364327.4N 1273027.7E	90 m	
LOC 06L (8° W/2020)	ICHJ	110.30 MHz	H24	364336.6N 1273050.1E		Scheduled Inspection Time Every 2nd THU(1400-2000 UTC) of the month
GP 06L		335.0 MHz	H24	364239.6N 1272924.6E		
DME 06L	ICHJ	1001 MHz (CH 40X)	H24	364239.4N 1272924.7E	90 m	

RKTU AD 2.20 LOCAL AERODROME REGULATIONS

1. Airport Regulations
 - 1.1 Cheong-Ju international airport is jointly operated by MOLIT and ROKAF. All aircraft wishing to use this AD have to observe the Cheong-Ju Local Regulations. Information about local regulations can be obtained from ATC TWR (ROKAF¹⁾) and Aeronautical Information Service Office (MOLIT²⁾)
 - ¹⁾ ROKAF : Republic of Korea Air Force.
 - ²⁾ MOLIT : Ministry of Land, Infrastructure and Transport.
 - 1.2 All airliners shall fly with IFR at Cheong-Ju international Airport for departures and arrivals.
 - 1.3 It is mandatory for all airliners to use RWY 24R/06L except for emergency situations. RWY 24L/06R can be used during emergency situations under the condition that does not exceed PCN81.
 - 1.4 Circling is not authorized South East of RWY 06-24, RWY 24-06.
 - 1.5 All airliners are prohibited to operate when RCR is under 7. If RCR is between 7 and 12, MOLIT decides to operate.
 - 1.6 Airliners taking off and landing can be delayed due to military flight and operations.

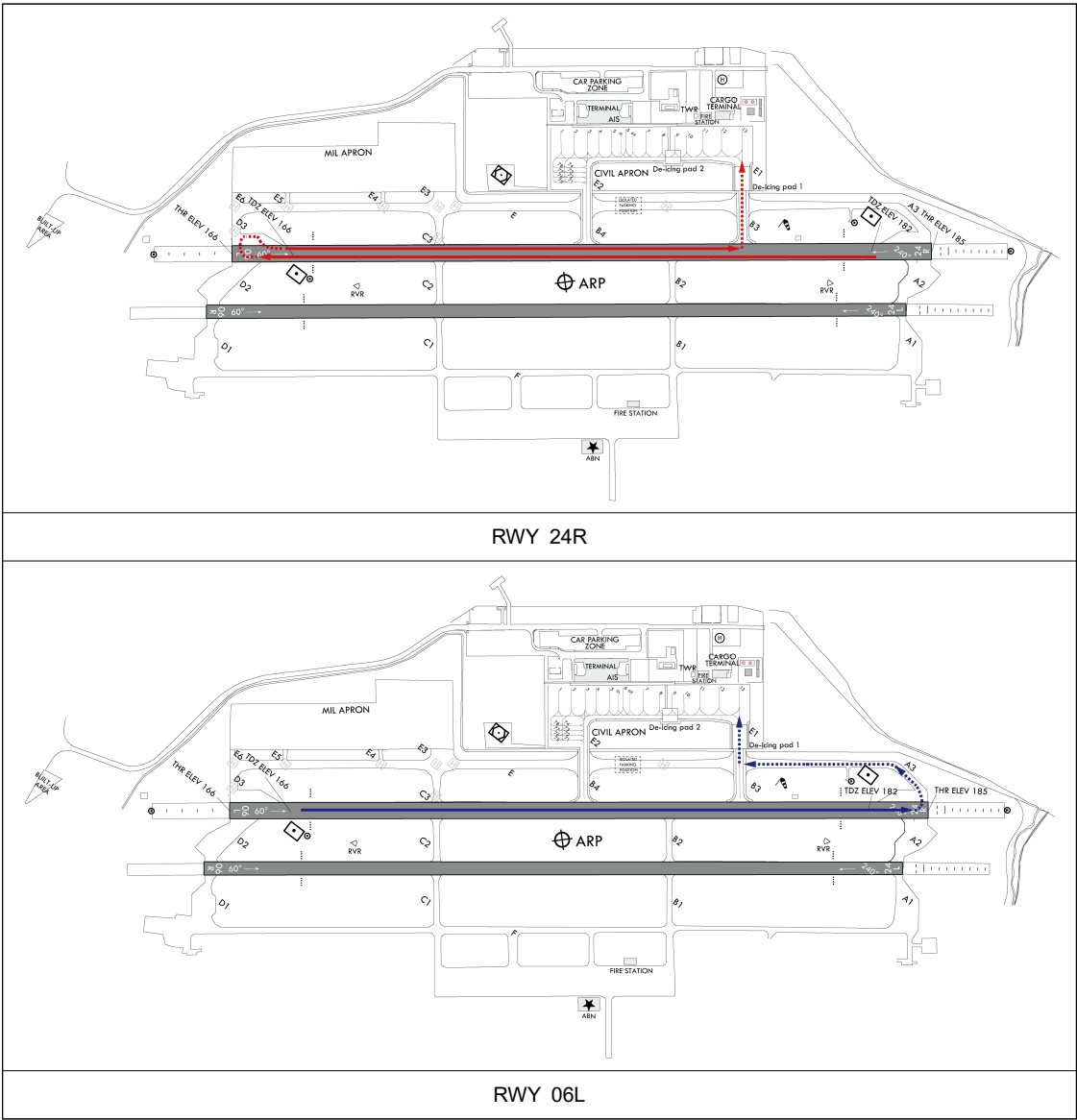
Change : Information of scheduled inspection time for radio navigation and landing aids.

- RWY 06L : Apron → E1 → B3 → RWY 06L turnpad → RWY 06L threshold



b. Arrival

RWY 24R : RWY 24R threshold → RWY 06L turnpad → B3 → E1 → Apron
RWY 06L : RWY 06L threshold → RWY 24R turnpad → A3 → E1 → Apron



1.8 Cheong-Ju international airport operates MARS(Multiple Aircraft Ramping System) as follows.

Aircraft stands	Aircraft code (ICAO)	Restrictions
6L	ICAO code letter "C"	a. Boarding bridge is unserviceable. b. When ACFT stand NR. 7 is used by ICAO code letter "D" or above, ACFT stand NR. 6R shall be unserviceable.
6R		

Change : Amended phrase(landing → arrival).

2. Ground Procedure

2.1 Unless otherwise cleared by ATC, All airliners shall taxi at speeds of less than 20 kt.

2.2 Taxi procedures

1. Departure

a. Unless otherwise cleared by ATC, aircraft are advised to taxi to holding point as follow.

RWY	TAXI Procedure
06L	Aircraft taxi to RWY 06L by using E2, E, D3
24R	Aircraft taxi to RWY 24R holding position by using E1, E

- b. RWY 06L holding position marking is located at 90 m from RWY centerline and RWY 24R holding position marking is located at 301 m from end of RWY on TWY E.
c. If unable to follow the above taxiing routes, the pilot should notify it to ATC.
d. All aircraft shall not enter the TWY A3 and RWY Unless cleared by ATC.

2. Arrival

- a. Unless otherwise cleared by ATC, aircraft are advised to taxi using arrival routes.
(Aerodrome regulations – 4. Arrival procedure – 4.2 Arrival routes)
b. If unable to follow the above RWY vacating routes, the pilot should notify it to ATC.

2.3 Radio frequency change points

1. Departure

a. All aircraft taxiing to RWY 06L/24R should change radio frequency from GND(121.875) to TWR(118.7) when entering the designated TWY as follows – A3, B3, B4, C3, and D3.

2. Arrival

a. All aircraft vacating RWY 06L/24R should change radio frequency from TWR(118.7) to GND(121.875) when entering designated TWY as follows – A3, B3, B4, C3, and D3.

2.4 Transponder

Pilots should always operate transponders with XPNDR(and AUTO if available) except for fully parking aircraft on stand.

3. Departure Procedure

3.1 ATC clearance

Aircraft shall obtain ATC clearance from Cheong-Ju GND prior to pushback.

3.2 Procedures for start-up and pushback

1. When a pilot is ready for start-up and pushback, the pilot shall contact Cheong-Ju GND and provide the following :
- a. Call sign
b. Gate/Stand number
c. Type of request, engine start
2. Unless there is any special situation, priority to make push back will be given to aircraft operators who requested first.
3. For safety reasons, ground crews must clear the equipment, vehicles and other obstacles before aircraft makes push back or start-up engine.
4. A pilot shall confirm with ground crews (Ground handler, aircraft maintenance) whether there is no hazard to the aircraft starting up. The pilot shall not ask Cheong-Ju GND for engine start-up and push back until its safety check-up is fully confirmed. If there is any elements posing a potential failure, the pilot shall ask Cheong-Ju GND for push back only. After moving and standing the aircraft at a safety area, the pilot can ask for engine start-up.
5. The push back procedures of the aircraft within the 1 Apron are as follows. As with most, these procedures shall be kept. However, if any modification of the procedures is required as the case may be, Cheong-Ju GND may give the pilot specific instructions suited for the safety of aircraft movement.

Change : Establishment of transponder(2.4).

6. Delays on the aircraft's pushback may be expected in order to maintain the distance of taxiing or pushback of other aircraft.
7. Unless otherwise instructed, pushback procedures are as follows.

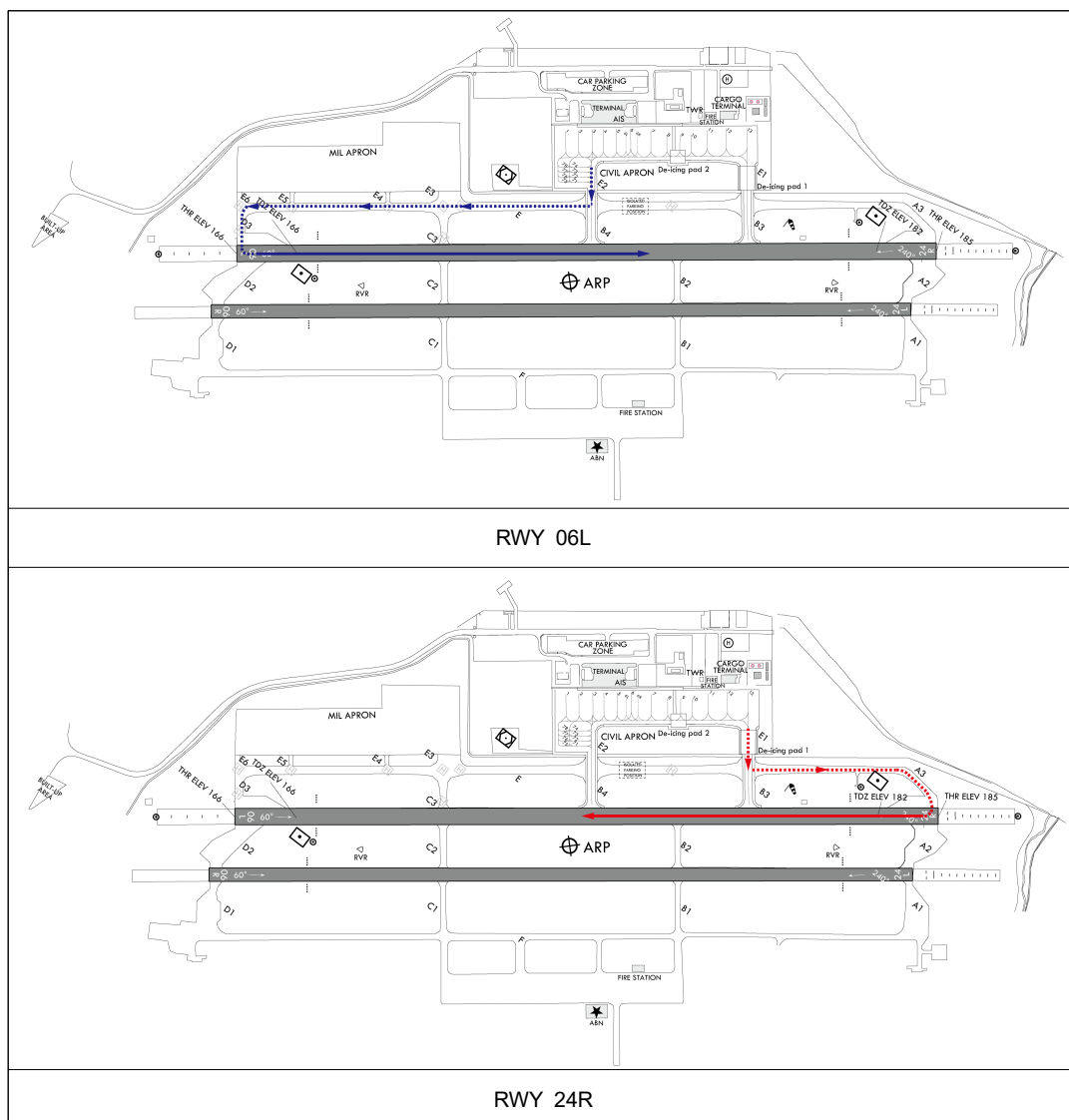
Aircraft stands	RWY in use	Pushback Procedures	Phraseology
1~13	06L	The aircraft shall be pushed back to face E2	Push back approved to face E2
1~13	24R	The aircraft shall be pushed back to face E1	push back approved to face E1

3.3

Departure routes

Unless otherwise instructed, aircraft shall follow the routes below.

RWY	Departure routes
RWY 06L	Apron → E2 → E → D3
RWY 24R	Apron → E1 → E → RWY 24R holding point → A3



Change : Information of ABN location.

3.4 De-icing Operations

1. De-icing pad located in TWY E1 is de-icing pad 1(below code letter "E" available), and the one located behind spot NR. 8 - 9 is de-icing pad 2(below code letter "D" available).
2. De-icing Pad Operation
 - a. Aircraft operator has to notice to the Ground operator When he/she wants to use de-icing pad.
 - b. Ground operator must notify authorized person about various matters related to operation procedure.
 - c. When using a de-icing pad, notify GND before pushback.
3. De-icing Pad Movement
Aircraft operator has to maintain a communication system which is connecting with de-icing working.

3.5 Intersection departure procedure

1. It is available to make intersection departure on RWY 06L/24R via B3/B4/C3.
2. Intersection departure is only available when requested by pilots.
3. The length of available RWY refers to RKTU AD 2.13 DECLARED DISTANCES.
4. When necessary, aircraft may obtain intersection departure clearance while taxiing.

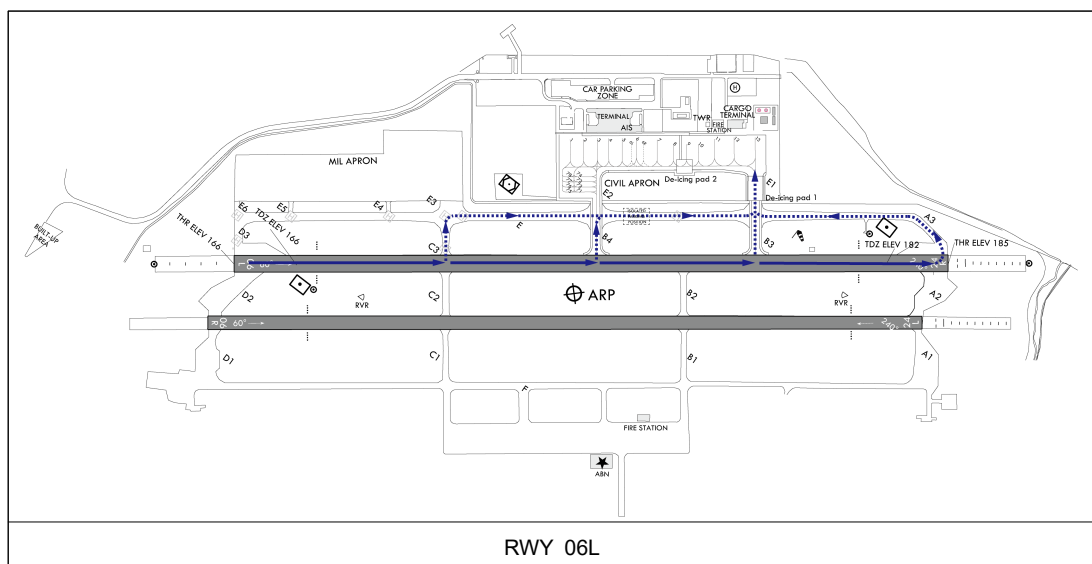
4. Arrival Procedure

4.1 Aircraft has to vacate RWY promptly.

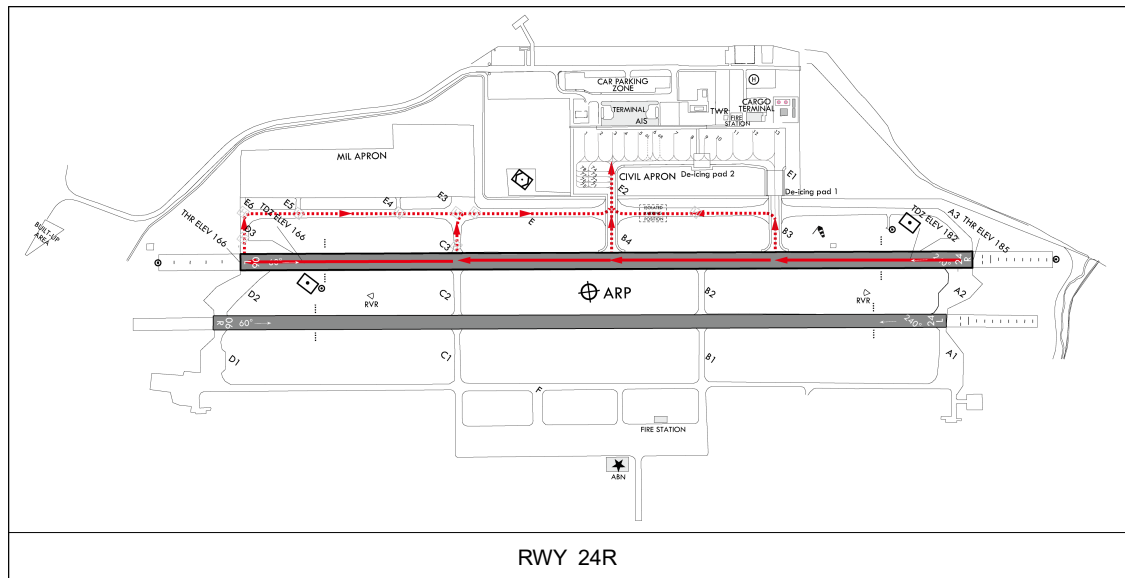
4.2 Arrival routes

1. Unless otherwise instructed by ATC, aircraft shall follow the routes below.

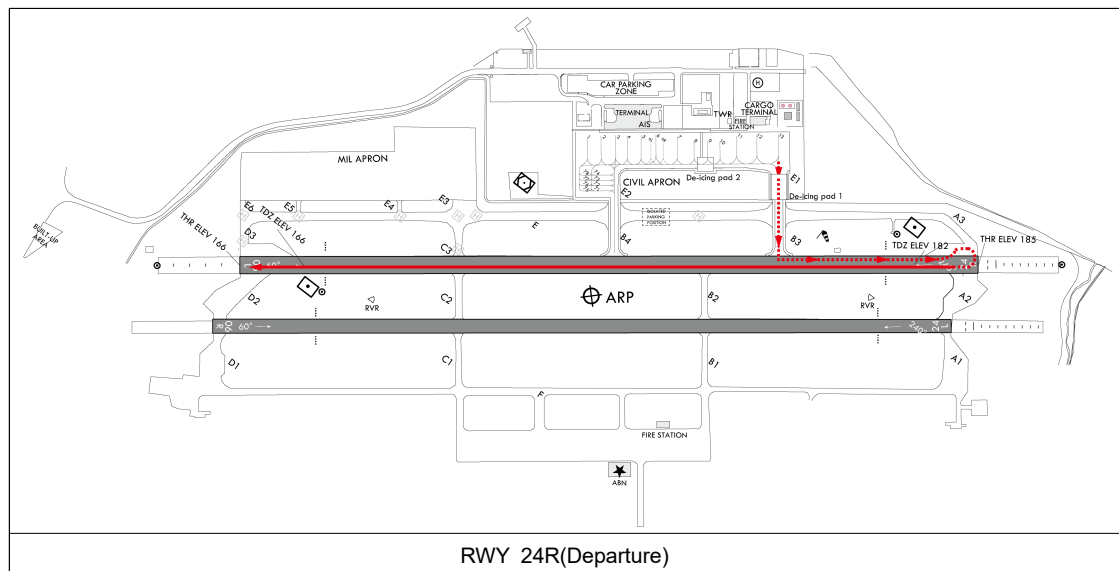
RWY in use	Arrival routes
RWY 06L	A3/B3/B4/C3 → E → E1 → Apron
RWY 24R	B3/B4/C3/D3 → E → E2 → Apron



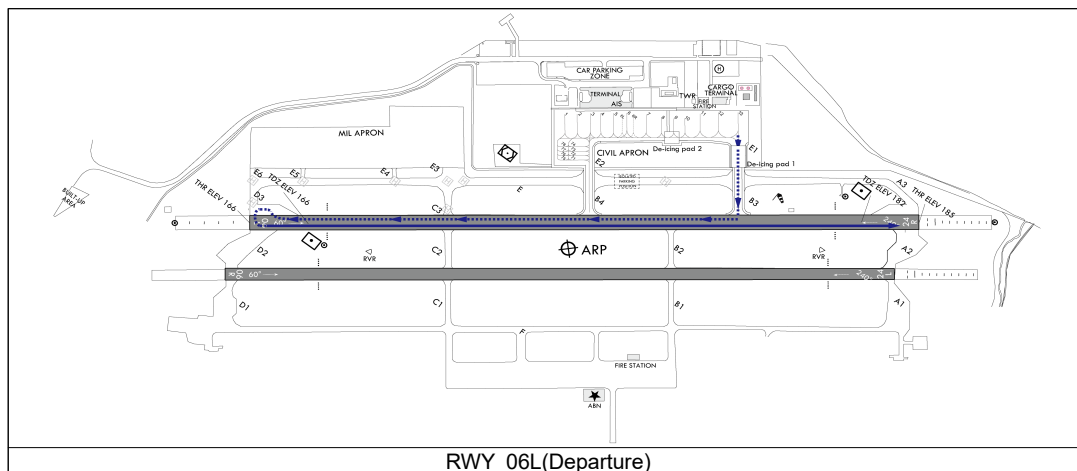
Change : Information of ABN location.



2. If speed adjustment of aircraft could be completed, It is available to vacate the RWY 06L/24R via TWY B3/B4/C3.
3. When vacating RWY via C3/D3, aircraft shall not to enter TWY E3/E4/E5/E6 unless authorized.
5. ICAO code letter "F" aircraft procedures for the usage of the alternate airport, RKTU
- 5.1 Taxiing procedures to and from ACFT stand NR. 13 are as follows :
 - a. Departure
 - RWY 24R : ACFT stand NR. 13 → E1 → B3 → 24R RWY turn pads → 24R RWY threshold
 - RWY 06L : ACFT stand NR. 13 → E1 → B3 → 06L RWY turn pads → 06L RWY threshold

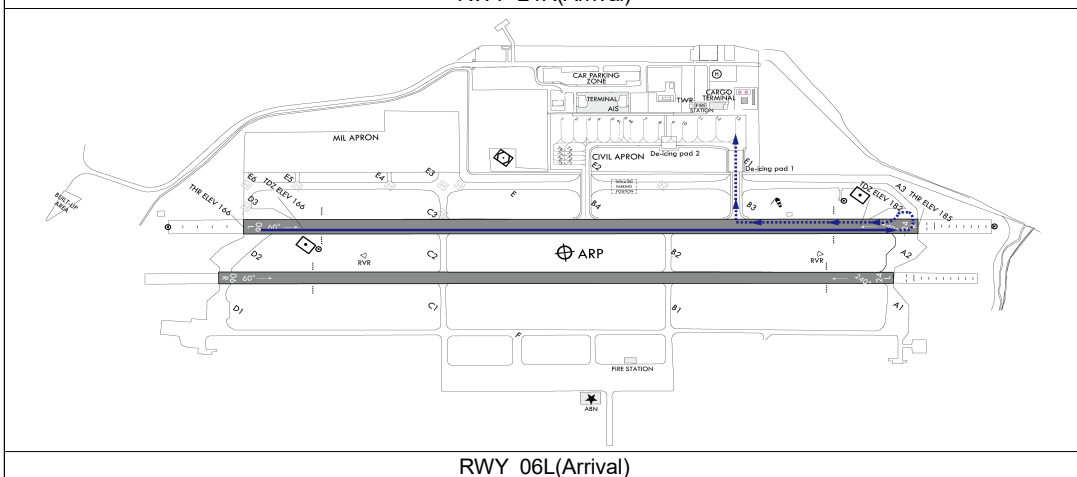
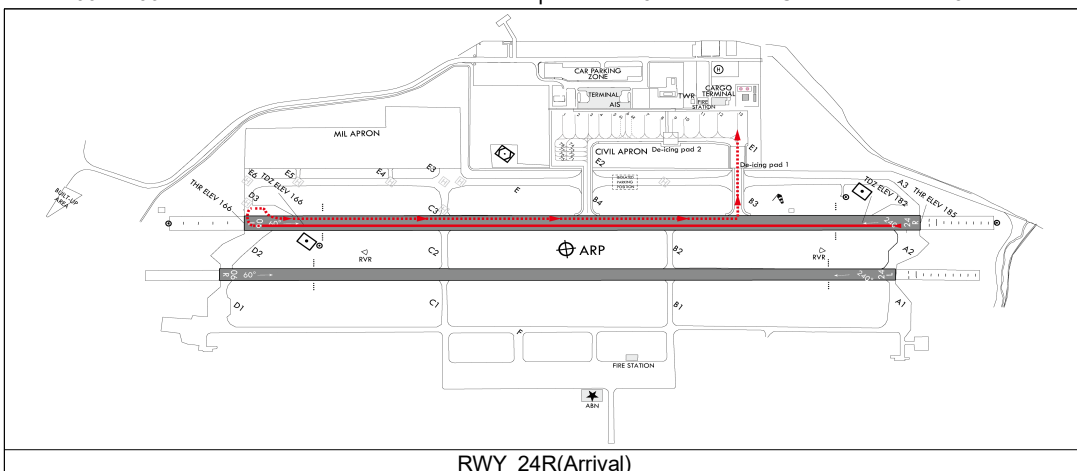


Change : Information of ABN location.



b. Arrival

RWY 24R : 24R RWY Threshold → 06L RWY turn pads → B3 → E1 → ACFT stand NR. 13
RWY 06L : 06L RWY Threshold → 24R RWY turn pads → B3 → E1 → ACFT stand NR. 13



5.2 Restriction

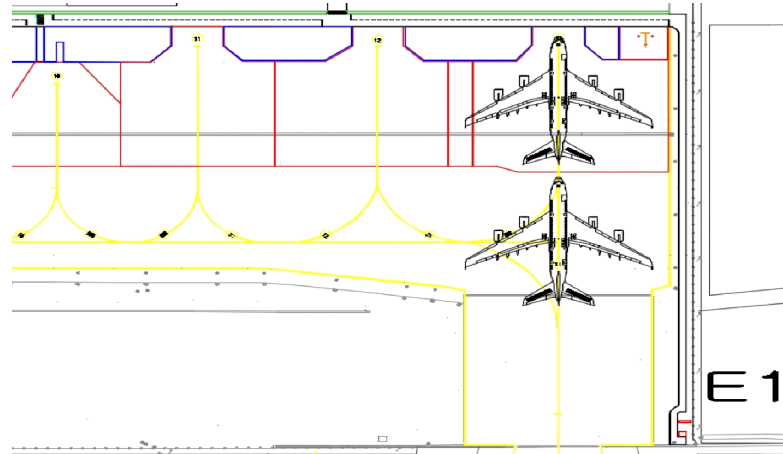
- ICAO code letter "F" aircraft are not able to take-off or land on RWY 06R/24L.
- ICAO code letter "F" aircraft shall enter the apron via TWY B3, TWY E1 and shall not move via TWY B4, TWY E2.
- After take off or landing of ICAO code letter "F" aircraft, take-off or landing of any other aircraft should be prohibited on RWY 06L/24R until RWY checking and removing FOD are finished.
- Aircraft TOW and LDW for the usage of the alternate airport shall be restricted as follows.

A/C TYPE	MTOW	LDW
A380	400 ton	386 ton
B747-8	353.8 ton	344.3 ton

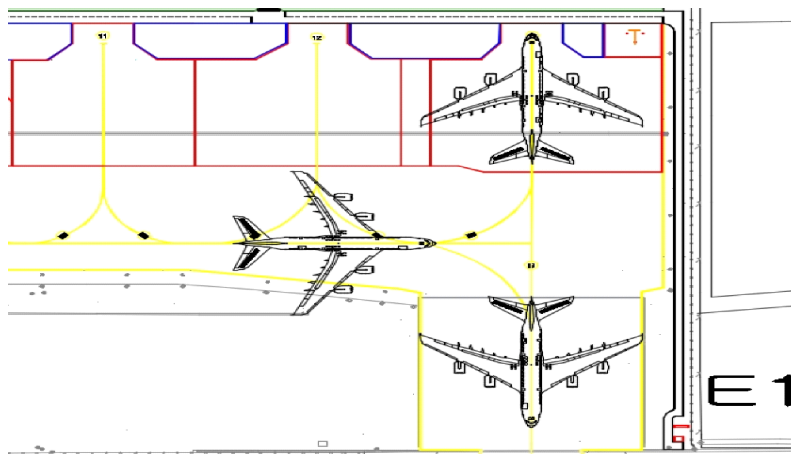
Change : Information of ABN location.

- e. When necessary for FOD prevention, Special take off procedures (A380 Flight crew operation manual) can be performed under the condition that the total width of RWY plus shoulder pavement has less than 58 m.
- f. The standard taxi routes for ICAO code letter "F" aircraft are as follows. :

1) Taxi-in Procedures



2) Push-back Procedures



- g. On the area of RWY, TWY B3, TWY E1 (including the curved part of TWY) and apron, ICAO code letter "F" aircraft should move at a speed of below 30 kt except for the departure maneuvering, which pilots should make his engines idle power, adjusting the speed only with operating brake system by inertia. Especially, A380 movement procedure is as follows. :

A380 Landing maneuvering			
Section	Status of engine		Speed
	No. 2 & 3	No. 1 & 4	
Runway maneuvering	Idle power	Idle power	- Below 30 kt
Turning pad	Idle power	Idle power	- Maintain 5 kt - Below 30 kt (After turning)
Taxiway/ Apron	Idle power	Shut down	- 7~8 kt
A380 Departure maneuvering			
Section	Status of engine		Speed
	No. 2 & 3	No. 1 & 4	
Taxiway/ Apron	Idle power	Idle power	- 7~8 kt
Runway maneuvering	Idle power	Idle power	- Below 30 kt
Turning pad	Idle power	Idle power	- Maintain 5 kt - Below 30 kt (after turning)

※ A380 Aircraft to be taxied with their engine thrust 4~6% (When turning, aircraft should keep 10% thrust using one outer engine of opposite turning direction).

RKTU AD 2.21 NOISE ABATEMENT PROCEDURES

NIL

RKTU AD 2.22 FLIGHT PROCEDURES

1. Weather Minima

1.1 Take-off Weather Minima

RWY 06L/24R		
ENG	HIRL & RCLL or RCL	Others
2 or more ENG	RVR / VIS 500 m	RVR / VIS 800 m

1.2 Weather Minima for 06L/24R

	RWY	CAT	DH/MDA-VIS	CEIL-VIS
PAR	06L	ABCDE	368/24	(200-½)
	24R	ABCDE	386/24	(200-½)
	ALS inop	increase vis ¼mile		
ASR	06L	AB	620/24	(500-½)
		C	620/40	(500-¾)
		DE	620/50	(500-1)
	24R	AB	860/24	(700-½)
		C	860-1½	(700-1½)
		D	860-1¾	(700-1¾)
		E	860-2	(700-2)
	ALS inop	increase vis ½mile		
CIRCLING	06L	A	780-1	(600-1)
		B	820-1	(700-1)
		C	820-1¾	(700-1¾)
		D	1 200-3	(1 100-3)
		E	1 220-3	(1 100-3)
	24R	AB	860-1	(700-1)
		C	860-2	(700-2)
		D	1 200-3	(1 100-3)
		E	1 220-3	(1 100-3)
	Circling not auth SE of RWY 06-24, RWY 24-06			
ILS	06L	ABCD	367/40	(200-¾)
		ALS inop	367/45	(200-¾)
	24R	ABCD	387/24	(200-½)
		ALS inop	387/40	(200-¾)
LOC	06L	AB	700/40	(600-¾)
		CD	700-1¼	(600-1¼)
		AB(ALS inop)	700/55	(600-1)
		CD(ALS inop)	700-1½	(600-1½)
	CIR (LOC Y APP')	AB	880-1	(700-1)
		C	1200-3	(1100-3)
		D	2000-3	(1900-3)
	24R	AB	620/24	(500-½)
		CD	620/40	(500-¾)
		AB(ALS inop)	620/55	(500-1)
		CD(ALS inop)	620-1¼	(500-1¼)
	CIR (LOC Y APP')	AB	880-1	(700-1)
		C	1200-3	(1100-3)
		D	2000-3	(1900-3)

Change : Information of weather minima for RWY 06L/24R(ILS, LOC).

	RWY	CAT	DH/MDA-VIS	CEIL-VIS
VOR	06L	AB	700/24	(600-½)
		C	700/50	(600-1)
		D	700/60	(600-1¼)
	CIRCLING 06L	A	780-1	(600-1)
		B	820-1	(700-1)
		C	820-1¾	(700-1¾)
		D	1 200-3	(1 100-3)
	06L ALS inop	increase CAT AB RVR 50 and vis 1mile increase CAT C vis 1½mile increase CAT D vis 1¼mile		
	24R	AB	860/24	(700-½)
		C	860-1½	(700-1½)
		D	860-1¾	(700-1¾)
	CIRCLING 24R	AB	860-1	(700-1)
		C	860-2	(700-2)
		D	1 200-3	(1 100-3)
	24R ALS inop	increase CAT AB RVR 50 and vis 1mile increase CAT C vis 2mile increase CAT D vis 2¼mile		
RNP	06L S-LNAV/VNAV	ABCD	625-1¼	(500-1¼)
		ABCD (ALS inop)	625-1½	(500-1½)
	06L S-LNAV	ABCD	620-1¼	(500-1¼)
		ABCD (ALS inop)	620-1½	(500-1½)
	24R S-LNAV/VNAV	ABCD	602/40	(500-¾)
		ABCD (ALS inop)	602-1⅜	(500-1⅜)
	24R S-LNAV	ABCD	620/40	(500-¾)
		ABCD (ALS inop)	620/55	(500-1)

Change : Information of weather minima for RWY 06L/24R(RNP).

1.3 Weather Minima for 06R/24L

	RWY	CAT	DH/MDA-VIS	CEIL-VIS
PAR	06R	A, B, C, D, E	372/40	(200-¾)
	24L	A, B, C, D, E	392/24	(200-½)
	24L ALS INOP	Increase VIS ¼ mile.		
ASR	06R	A, B	620/50	(500-1)
		C	620-1¼	(500-1¼)
		D, E	620-1½	(500-1½)
	24L	A, B	880/40	(700-¾)
		C	880-1½	(700-1½)
		D	880-1¾	(700-1¾)
		E	880-2	(700-2)
	24L ALS INOP	Increase CAT A, B VIS ¼ mile. Increase CAT C, D, E VIS ½ mile.		
CIRCLING	06R	A	780-1	(600-1)
		B	820-1	(700-1)
		C	820-1¾	(700-1¾)
		D	1 200-3	(1 100-3)
		E	1 220-3	(1 100-3)
	24L	A, B	880-1	(700-1)
		C	880-2	(700-2)
		D	1 200-3	(1 100-3)
		E	1 220-3	(1 100-3)
	Circling not AUTH SE of RWY 06-24, RWY 24-06.			

2. VFR

2.1 Entry / helicopter

1. General Conditions

- Helicopters using civil aprons for taking off or landing shall be made on TWY E.
For helicopters with wheel-type landing gear, take-off/landing/taxiing shall be conducted on the runway only after obtaining the permission from the control tower.
- After take-off, aircraft shall depart the traffic pattern to the northwest and any aircraft which want to take-off and cross the RWY 06R/24L shall obtain the prior permission from the control tower.
- Traffic pattern altitude for helicopters is 1 000 ft except for B-412 helicopter and light aircraft.

2. Procedure for departing traffic pattern (refer to the diagram)

I. RWY 24L/R in use

- For aircraft departing the traffic pattern to the north
Turn right after take-off, then fly to the right side of OCHANG at 1 000 ft with broadcasting the position in the blind. Fly to the right side of the National road 17 while keeping a sharp lookout for other aircraft entering or leaving Jincheon branch office(360°R 6 NM), the Forest Government Information Agency, then fly to the left side ABEAM of the Jincheon Casemate(launching pad) at 1 500 ft and after broadcasting the position in the blind over the JINCHEON, depart to the destination.
- For aircraft departing the traffic pattern to the west
After take-off, turn right and fly via OCHANG at 1 000 ft with broadcasting the position in the blind, then proceed to BYONGCHEN at 1 700 ft along the south of the National road 510, and after broadcasting the position in the blind over BYONGCHEN, depart to the destination.

Change : Page contorl.

- c. For aircraft departing the traffic pattern to the south
 - Take-off for crossing the runway 06R/24L shall be allowed only after obtaining the permission from the control tower.
 - After take-off, turn left after obtaining the permission from the control tower and proceed direct to "C" Point at 1 200 ft.
 - After take-off, maintain at or below 500 ft until passing through the end of the runway, and turn left after obtaining the permission from the control tower, depart to the destination via MIWON at 2 500 ft.
 - If no permission is obtained from the control tower, maintain at or below 500 ft until passing the end of the runway, and turn right, then fly along the right side of JUNGBU Expressway, and after broadcasting the position in the blind over "C" Point at 1 200 ft, depart to the destination.
- d. For aircraft departing the traffic pattern to the east
 - After take-off, turn right and proceed to JEUNGPYEONG at 1 000 ft via 'Down Wind leg' and depart to the destination after broadcasting the position in the blind over JEUNGPYEONG; or
 - After obtaining the permission from the control tower, cross the extended centerline of runway at or below 1 000 ft and depart to the destination.

II. RWY 06L/R in use

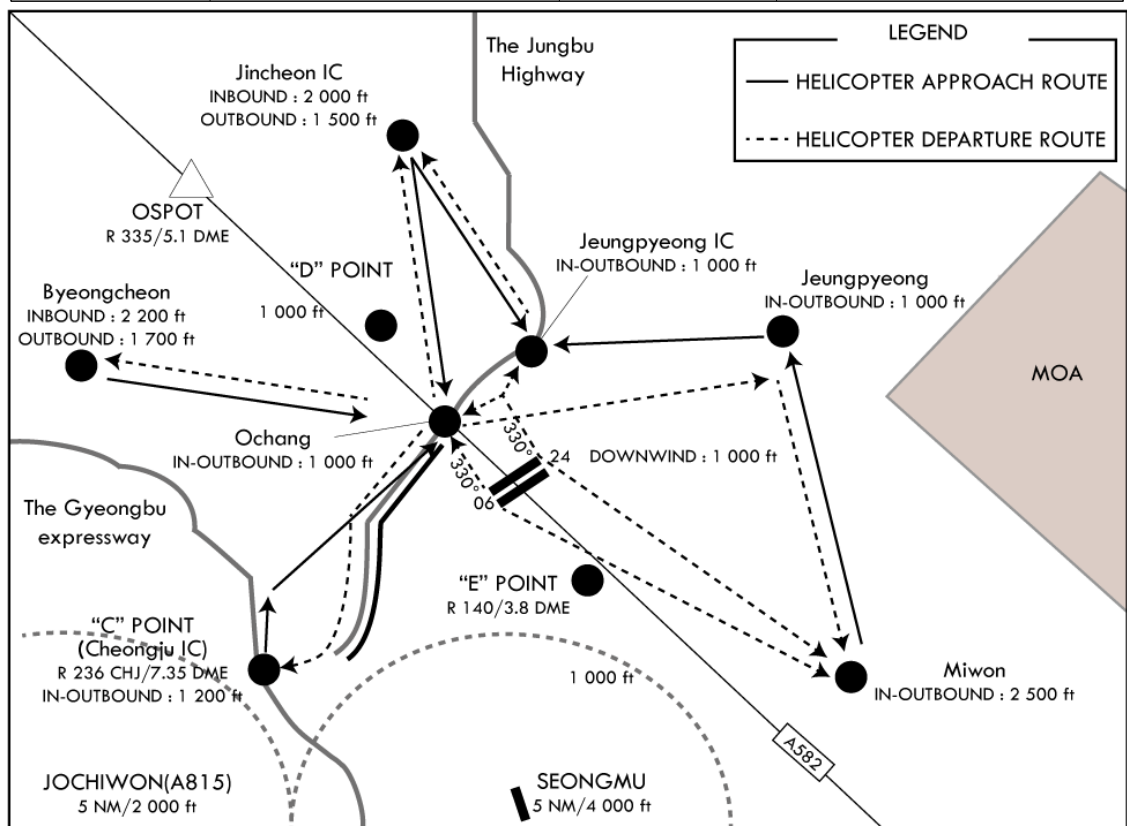
- a. For aircraft departing the traffic pattern to the north
 - After take-off, turn left and maintain at or below 800 ft. Fly via the right side of JEUNGPYEONG Interchange at 1 000 ft. Proceed to JINCHEON at 1 500 ft along the JUNGBU Expressway and depart to the destination after broadcasting the position in the blind over JINCHEON.
- b. For aircraft departing the traffic pattern to the west
 - After take-off, turn left and maintain at or below 800 ft. Fly via the right side of OCHANG at 1 000 ft along JUNGBU Expressway. and proceed to BUNGCHON at 1 700 ft along the National road 510, and Depart to the destination after broadcasting the position in the blind over BUNGCHON.
- c. For aircraft departing the traffic pattern to the south
 - Take-off for crossing the runway 06R/24L shall be allowed only after obtaining the permission from the control tower.
 - After take-off, maintain at or below 500 ft until passing through the end of the runway, and after obtaining the permission from the control tower, turn right and depart to the destination via MIWON at 2 500 ft.
 - When departing the traffic pattern via "C" point, turn right after passing through the end of runway and proceed to "C" Point at 1 200 ft via Down wind and Depart to the destination after broadcasting the position in the blind over "C" Point.
 - Flying directly over downtown and school areas of Byeongcheon, Miwon and Ochang is prohibited.

3. Procedure for entering traffic pattern

- a. For aircraft entering the traffic pattern from the southwest
 - Request landing clearance at "C" Point at 1 200 ft then along the Mihocheon and right side of the Jungbu Expressway.
 - Maintain at or below 1 000 ft until passing Runway extension line.
- b. For aircraft entering the traffic pattern from the west
 - After broadcasting the position in the blind over the Mokcheon Interchange, fly to the right side of Byeongcheon(right side of National road 21), then request landing clearance at Byeongcheon at 2 200 ft.
 - Fly along the north of National Road 510, proceed to OCHANG at 1 500 ft and then enter the traffic pattern by descending to 1 000 ft.
- c. For aircraft entering the traffic pattern from the north
 - Request landing clearance at Jincheon at 2 000 ft after broadcasting the position in the blind over Gwanghyewon and enter the traffic pattern via the right side of Jeungpyeong Interchange or via Ochang.
- d. For aircraft entering the traffic pattern from the east
 - After broadcasting the position in the blind over Goesan, request landing clearance over Jeungpyeong at 1 000 ft, and enter the traffic pattern via Jeungpyeong Interchange at 1 000 ft.

- e. For aircraft entering the traffic pattern from the northeast
After broadcasting the position in the blind over Eumseong, request landing clearance at Jeungpyeong at 1 000 ft, and enter the traffic pattern via Jeungpyeong Interchange at 1 000 ft.
* Flying directly over downtown and school areas of Byeongcheon, Miwon and Ochang is prohibited.
- f. For aircraft entering the traffic pattern from the southeast
Fly via Miwon at 2 500 ft and request landing clearance at Jeungpyeong at 1 000 ft, Enter the traffic pattern via Jeungpyeong Interchange at 1 000 ft.
- g. When RWY 06 R/L is in use, enter the traffic pattern by maintaining 1 000 ft over Ochang.

VFR aircraft reporting points			
Jincheon	365127.01N 1272602.64E	"C"	363737.50N 1272259.60E
Jeungpyeong	364640.00N 1273630.00E	Ochang	364434.03N 1272747.39E
"D"	364546.75N 1272620.05E	Miwon	364305.06N 1273924.42E
Byeongcheon	364546.75N 1271800.32E	Jeungpyeong IC	364621.81N 1273025.87E
"O"	364851.41N 1272404.68E	"P"	364941.23N 1272957.93E



2.2 Light aircraft

1. General Conditions

- Use the runway 06L/24R and parking shall be made on civil ramp.
- Unless otherwise cleared by ATC, Use TWY B3/B4/C3 for departing and after landing RWY.
- Use northern traffic pattern and maintain pattern altitude 1 200 ft(AMSL).
- Pattern Traffic is only allowed up to 3 flights.
- Flight plan must be submitted 17:00, one day before the flight.

Change : Information of "C" point.



2. Possible time for flight

a. Weekdays

- 1) Setting Military jet aircraft's flight time as a standard, flight for light aircraft is allowed 1 hour 30 mins. Before the military jet aircraft's flight, and 30 mins after military jet aircraft's flight during daytime.
During nighttime, flight for light aircraft is allowed 1hour before military jet aircraft's flight and 30 mins after military jet aircraft's flight.
- 2) Setting Helicopter's flight time as a standard, flight for light aircraft are allowed 15 mins before Helicopter's takeoff and 15 mins after helicopter's flight.
- 3) Flights during morning time in weekdays is allowed after 07:00 under the condition that it suits the clause 1) and 2) above.

b. Weekends

- 1) 09:00~12:00, 13:00~17:00, 18:00~21:00
- 2) Light aircraft departing to other airport or arriving from other airport can only depart before 09:00 and arrive after 21:00.

3. Procedure for departing(refer to the diagram)

I. RWY 24R in use

- Turn right in 1 NM after take-off then direct to the destination via "O" point(2 500 ft). Turn left after take-off shall be allowed after obtaining the permission from the control tower.

II. RWY 06L in use

- Turn left in 1 NM after take-off then direct to the destination via "P" point(2 500 ft). Turn right after take-off shall be allowed after obtaining the permission from the control tower.

4. Procedure for landing(refer to the diagram)

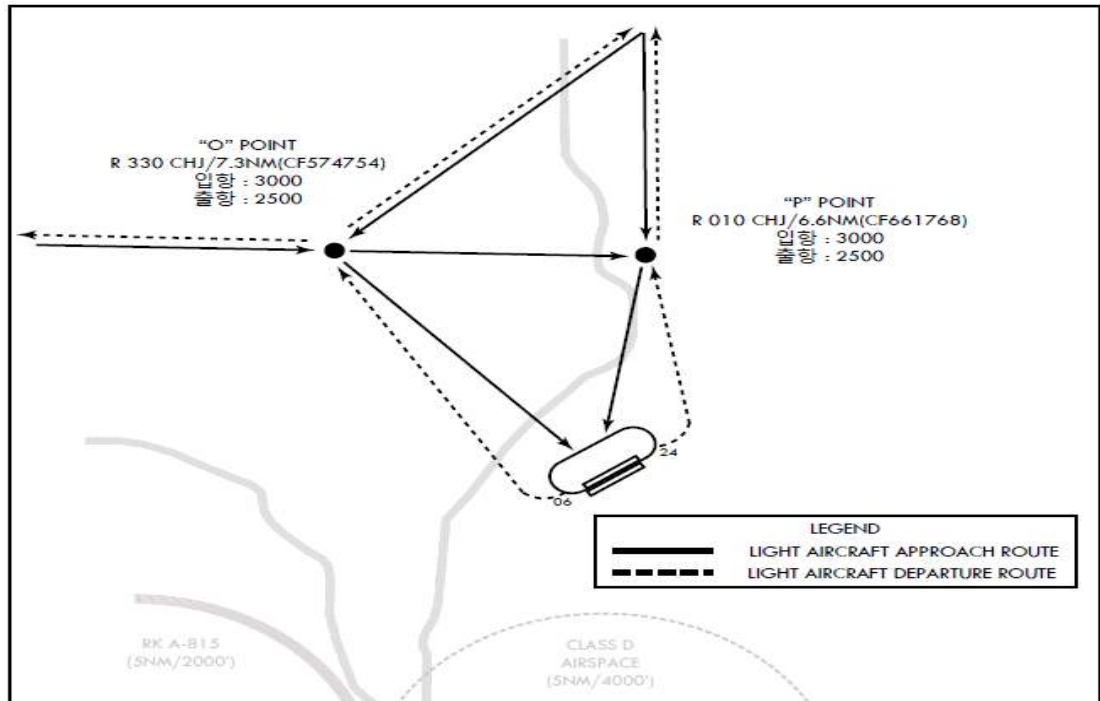
I. RWY 24R in use

- a. For entering from the north or northeast REPORT outside of 10 NM from the ARP Downwind enter via "P" point(3 000 ft).
- b. For entering from the west or northwest REPORT outside of 10 NM from the ARP Downwind enter via "O" point(3 000 ft).
- c. For entering from the south or east REPORT outside of 10 NM from the ARP before crossing the extended centerline of runway. Land via "O" point(3 000 ft) or "P" point(3 000 ft) or when traffic is no factor land via "O" point(3 000 ft) or "P" point(3 000 ft) after passing over the airport(4 500 ft).
- d. Follow traffic separation and condition enter after holding at "O" point(3 000 ft) or "P" point(3 000 ft) or direct Downwind enter.

II. RWY 06L in use

- a. For entering from the north or northeast REPORT outside of 10 NM from the ARP. Downwind 1 000 ft enter from O point(3 000 ft) or Downwind enter via "P" point(3 000 ft) or "O" point(3 000 ft)
- b. For entering from the west or northwest REPORT outside of 10 NM from the ARP. Downwind enter via "O" point(3 000 ft).
- c. For entering from the south or east REPORT outside of 10 NM from the ARP before crossing the extended centerline of runway. Land via "O" point(3 000 ft) or "P" point(3 000 ft) or when traffic is no factor land via "O" point(3 000 ft) or "P" point(3 000 ft) after passing over the airport(4 500 ft).

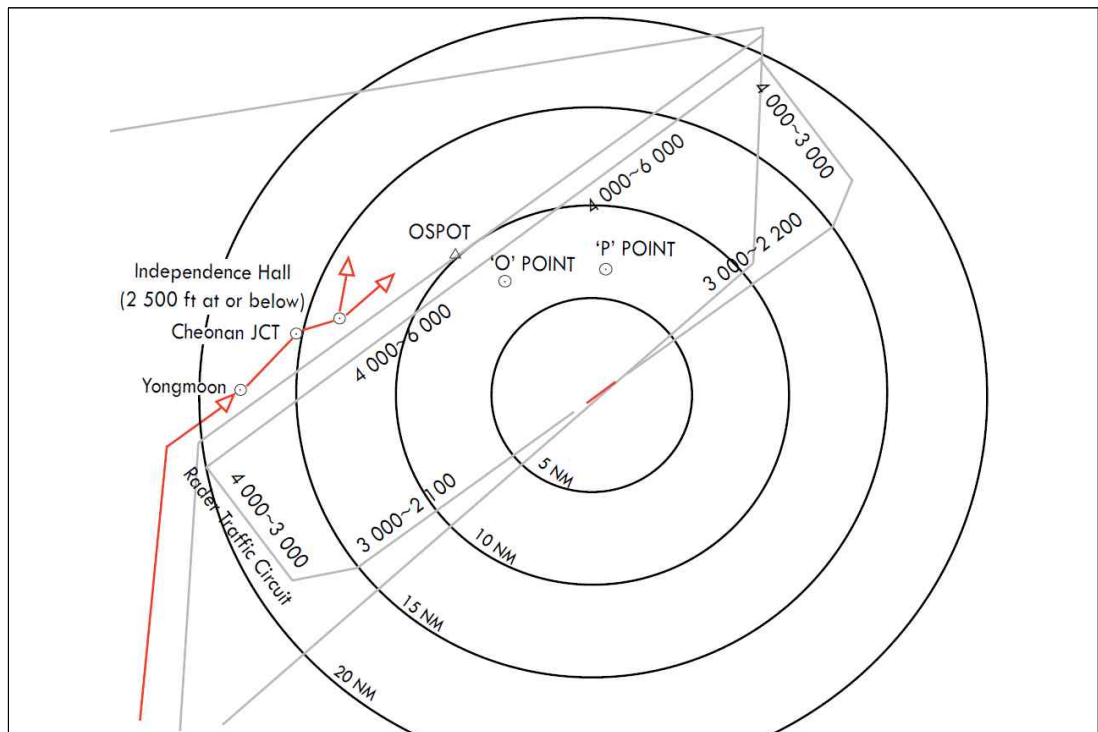
- d. Follow traffic separation and condition enter after holding at O point(3 000 ft) or P point(3 000 ft) or direct Downwind enter.



5. Procedure for transit from the southwest(refer to the diagram)

VFR aircraft entry point	
Yongmoon	364228N 1270709E
Cheonan JCT	364606N 1271044E
Independence Hall	364708N 1271313E

- a. For entering from the southwest PASS through Yongmoon, Cheonan JCT and Independence Hall(2 500 ft at or below)



Change : Establishment of procedure for transit from the southwest.

INTENTIONALLY

LEFT

BLANK

3. Radio Communication Failure Procedure

3.1 IFR

1. General

- a. No person may take off unless two-way radio communication can be maintained with the Air Traffic Control.
- b. On recognition of communication failure during flight, squawk 7600 and if necessary to ensure safe altitude, climb to Minimum Safe Altitude or above to maintain obstacle clearance. Then comply with following procedures.

2. VFR condition

If the failure occurs in VFR conditions, or if VFR conditions are encountered after the failure, each pilot shall continue the flight under VFR and land as soon as practicable.

3. IFR condition

If the failure occurs in IFR conditions, or if paragraph 2 of this section cannot be complied with, each pilot shall continue the flight according to the following.

A. DEPARTURE

a. Under Pilot Navigation

RWY 24 in use

1) RNAV OLRG 1

Climb on 240° course to OLRG, then...via(transition) and maintain 6 000.

- GUKDO TRANSITION(OLRG 1, GUKDO) :...330° track to LAVAX, then via 060° track to TUTAE, then via 044° track to GUKDO.
- OSPOT TRANSITION(OLRG 1, OSPOT) :...330° track to LAVAX, then via 035° track to OSPOT.
- OLMEN TRANSITION(OLRG 1, OLMEN) :...291° track to OLMEN, cross OLMEN at or above 8 000.
- BITUX TRANSITION(OLRG 1, BITUX) :... 330° track to LAVAX, then via 060° track to PUGOX, then via 150° track to LEDUD, then via 164° track to BOEUN, then via 141° track to BITUX..

RWY 06 in use

1) RNAV BUKIL 1

Climb on 060° course to BUKIL, then... via(transition) and maintain 6 000.

- GUKDO TRANSITION(BUKIL1. GUKDO) : ...007° track to GUKDO, cross GUKDO at or above 8 000.
- OSPOT TRANSITION(BUKIL1. OSPOT) :...330° track to TUTAE, then via 252° track to OSPOT.
- OLMEN/BULTI TRANSITION(BUKIL1. OLMEN/BULTI) :...330° track to TUTAE, then via 240° track to OWING, then via 280° track to OLMEN/BULTI.
- BITUX TRANSITION(BUKIL1. BITUX) :...330° track to TUTAE, then via 240° track to OLDIX, then via 150° track to MIGUL, then via 141° track to BOEUN, then via 141° track to BITUX.

Change : Information of fix names.

b. Under Radar vectoring

- Proceed with the route from the point of radio failure to the fix, route, or airway specified in vector clearance,
- In the absence of an assigned route, proceed with the route that ATC has advised, which may be expected in a further clearance, or
- In the absence of an assigned route or a route that ATC has advised, which may be expected in a further clearance, proceed with the route filed in the flight plan, and
- Maintain minimum en-route altitude (MEA) or the altitude/flight level cleared in the last ATC clearance received, whichever is higher, for 5 minutes
- Continue the flight with altitude, flight level filed in the flight plan.

B. ARRIVAL

RWY 24 in use

1. VFR condition

The aircraft shall maintain VFR and make an approach to land at RWY 24 passing ICHG 7 DME FINAL.

2. IFR condition

The aircraft shall proceed to IKAPO IAF and execute ILS/DME Y/Z RWY 24R or VOR/DME RWY 24R or RNAV RWY 24R or LOC/DME 24R APP.

RWY 06 in use

1. VFR condition

The aircraft shall maintain VFR and make an approach to land at RWY 06 passing SAPUX 6 DME FINAL.

2. IFR condition

The aircraft shall proceed to JIKJI IAF and execute RNAV RWY 06L APCH.

3.2 VFR

1. VFR flight which has encountered radio communication failure shall

a. Helicopter

- SQ 7600, and
- When able to see light gun signal from control TWR, follow that instruction
- If unable to see light gun signal from control TWR, hold over downwind until ETA or for 10 minutes, whichever is later, then
- Land on RWY in use as filed, and take caution of landing and departing traffic.

2. Conventional flight

- SQ 7600, and
- When able to see light gun signal from control TWR, follow that instruction
- If unable to see light gun signal from control TWR, hold on downwind until ETA or for 10 minutes, whichever is later, then
- Aircraft should land on RWY in use
- Pilot shall take caution of landing and departing traffic.

Change : Information of fix names(NOSON → IKAPO and HANJI → SAPUX).

RKTU AD 2.23 ADDITIONAL INFORMATION

1. Bird concentrations in the vicinity of the airport
 - a. Due to bird habitats in the vicinity of airport, pilots shall exercise caution not to conflict with the birds.
 - b. The activity altitude of birds is from 0 to 500 ft(150 m).
 - c. Also, before daily sunset, activities of the birds occur above the same way when returning to the resting area during 1 hour or 2 hours.
 - d. Control tower shall provide pilots with the information about the birds's movement.
 - e. Monthly bird activities is as follows :
 - From January to March, and from October to December : During 1 hour or 2 hours after daily sunrise, birds like dove or duck mallard move from resting area (approximately 4~12 km to the southwest of threshold of Runway 24R/06L) to feeding area(farmlands or airport).
 - From April to September : During 1 hour or 2 hours after daily sunrise, birds like white-plumed egret and grey heron move from resting area(mountains which are located in approximately 1 km far from the airport) to feeding area(farmlands or airport).
 - Also, resident birds, such as magpie, skylark or sparrow, move in and out agricultural area near airport.
 - f. Preventive activities against bird strikes, such as operation of B.A.T(Bird Alert Team) and devices(cannon, shotgun, etc) which scare birds away, shall be carried out. Also, the measures for eliminating resting or feeding area of birds is being taken in the airport boundary.
 - g. On the properties of airport farming, garbage treatment facilities are not permitted.

RKTU AD 2.24 CHARTS RELATED TO THE AERODROME

Aerodrome Chart - ICAO	RKTU AD CHART 2-1
Aircraft Parking/Docking Chart - ICAO	RKTU AD CHART 2-3
Aerodrome Ground Movement Chart - ICAO	RKTU AD CHART 2-4
Aerodrome Obstacle Chart - ICAO - Type A	RKTU AD CHART 2-5
Aerodrome Obstacle Chart - ICAO - Type A	RKTU AD CHART 2-6
Aerodrome Obstacle Chart - ICAO - Type A	RKTU AD CHART 2-7
Aerodrome Obstacle Chart - ICAO - Type A	RKTU AD CHART 2-8
Aerodrome Obstacle Chart - ICAO - Type B	RKTU AD CHART 2-9
Area Chart - ICAO	RKTU AD CHART 2-10
SID - RWY 06L - RNAV(GNSS) BUKIL 2	RKTU AD CHART 2-11
SID - RWY 24R - RNAV(GNSS) UPTIL 1	RKTU AD CHART 2-12
SID - RWY 06L/R - CHEONGJU 7	RKTU AD CHART 2-13
SID - RWY 24L/R - CHEONGJU 8	RKTU AD CHART 2-14
SID - RWY 06L/24R - CHEONGJU 1D	RKTU AD CHART 2-15
STAR - RWY 06L/24R - MATIZ 1	RKTU AD CHART 2-15-2
ATC Surveillance Minimum Altitude Chart - ICAO	RKTU AD CHART 2-16
Instrument Approach Chart - RWY 24R - VOR/DME	RKTU AD CHART 2-17
Instrument Approach Chart - RWY 24R - ILS/DME Y	RKTU AD CHART 2-18
Instrument Approach Chart - RWY 06L - RNP	RKTU AD CHART 2-19
Instrument Approach Chart - RWY 24R - RNP	RKTU AD CHART 2-20
Instrument Approach Chart - RWY 24R - ILS/DME Z	RKTU AD CHART 2-21
Instrument Approach Chart - RWY 06L - PAR	RKTU AD CHART 2-22
Instrument Approach Chart - RWY 24R - PAR	RKTU AD CHART 2-23
Instrument Approach Chart - RWY 06L - ASR	RKTU AD CHART 2-24
Instrument Approach Chart - RWY 24R - ASR	RKTU AD CHART 2-25
Instrument Approach Chart - RWY 06L - ILS/DME Y	RKTU AD CHART 2-26
Instrument Approach Chart - RWY 06L - ILS/DME Z	RKTU AD CHART 2-27
Instrument Approach Chart - RWY 06L - LOC/DME	RKTU AD CHART 2-28
Instrument Approach Chart - RWY 06L - VOR/DME	RKTU AD CHART 2-29
Instrument Approach Chart - RWY 24R - LOC/DME Y	RKTU AD CHART 2-29-2
Instrument Approach Chart - RWY 06L - LOC/DME Z	RKTU AD CHART 2-29-4
Instrument Approach Chart - RWY 24R - LOC/DME Z	RKTU AD CHART 2-29-6
Visual Approach Chart - ICAO	RKTU AD CHART 2-30
Bird concentrates in the vicinity of airport	RKTU AD CHART 2-31

