

TEL : 82-53-668-0284
FAX : 82-53-668-0277
AFS : RKRRYNYX
E-mail : aisd@korea.kr
Web : <https://aim.koca.go.kr>

REPUBLIC OF KOREA
Ministry of Land, Infrastructure and Transport
Office of Civil Aviation
11, Doum 6-ro, Sejong-si, 30103, Republic of Korea

AIP
Supplement 9/23
1 JUN 2023

GEN : NIL

ENR : NIL

A D : ULSAN/Ulsan(RKPU)

TEMPORARY OBSTACLES ERECTED

1. INTRODUCTION

Temporary obstacles are erected near Ulsan Airport.

2. PERIOD

From 1500 UTC 19 MAY 2023 To 1500 UTC 31 AUG 2024

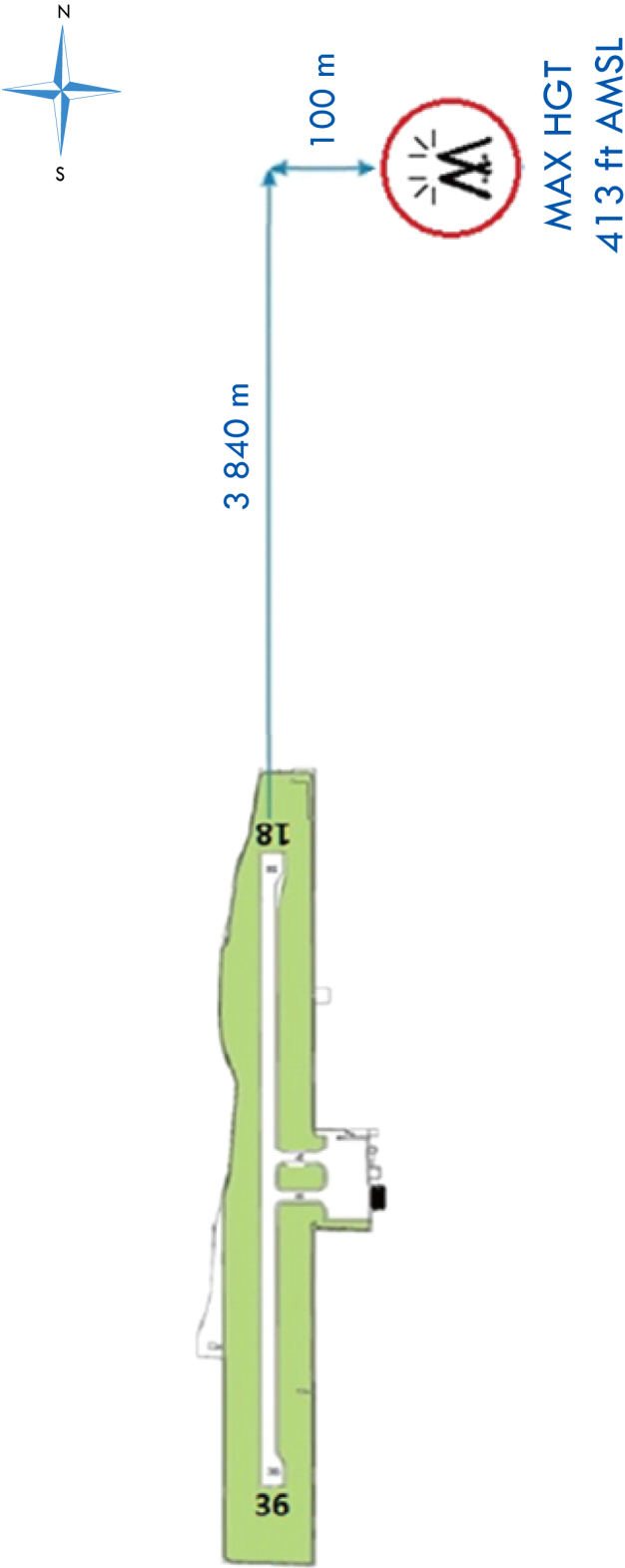
3. OBST INFORMATION

Working Area	OBST Type	Position	MAX Height		OBST Limitation Surface
			AGL	AMSL	
Shincheon	2 Tower cranes	35°38'14"N 129°20'54"E Radius 100 m	296 ft	413 ft	Approach and Conical surface

4. REMARKS

- (1) Cranes penetrate the obstacle limitation surface of RKPU.
- (2) Cranes turn on its axis within working area.
- (3) Obstacle lights have been installed on the top of cranes.
- (4) Any change to the contents of these pages will be notified by NOTAM.

5. DIAGRAM



NOT TO SCALE