

REPUBLIC OF KOREA

AIRAC AIP

TEL : 82-53-668-0255
FAX : 82-53-668-0277
AFS : RKRRYNYX
EMAIL : aais@korea.kr
Web : <http://ais.casa.go.kr>

Ministry of Land, Infrastructure and Transport
Office of Civil Aviation

11, Doum 6-ro, Sejong-si, 30103, Republic of Korea

AMENDMENT NR 1/23

12 JAN 2023

AIRAC

AIP AMENDMENT NR 1/23

(Effective : 1600UTC 22 FEB 2023)

1. SIGNIFICANT INFORMATION AND CHANGES

1.1 Enroute

a) Establishment of UA 44(GUMAK)

1.2 Gimpo INTL Airport

a) Establishment of G2 holding bay and NOTE.

1.3 Gwangju Airport

a) Establishment of new procedures and Information of chart NR..

2. PAGE CONTROL

OLD (Pages to be removed)	NEW (Pages to be inserted)
VOL I, Part II - ENR (Enroute) ENR 5.5-1(13 JAN 22) / 5.5-2(13 JAN 22) ENR 6-6(13 JAN 22) / 6-7(13 JAN 22)	VOL I, Part II - ENR (Enroute) ENR 5.5-1(12 JAN 23) / 5.5-2(12 JAN 23) ENR 6-6(12 JAN 23) / 6-7(13 JAN 22)
VOL II, Part III - AD (Aerodrome) RKSS AD 2-9(30 JUN 22) / 2-10(17 NOV 22)	VOL II, Part III - AD (Aerodrome) RKSS AD 2-9(30 JUN 22) / 2-10(12 JAN 23)
VOL III, Part III - AD (Aerodrome) RKJJ AD 2-17(28 JUL 22) / 2-18(28 JUL 22) AD CHART 2-11(10 MAR 22) / 2-11-1(27 SEP 18) AD CHART 2-12(30 JUN 22) / 2-12-1(30 JUN 22) AD CHART 2-13(30 JUN 22) / 2-13-1(30 JUN 22) AD CHART 2-14(28 JUL 22) / BLANK AD CHART 2-15(10 MAR 22) / 2-15-1(21 NOV 19) AD CHART 2-16(2 JUN 22) / 2-16-1(2 JUN 22) AD CHART 2-17(2 JUN 22) / 2-17-1(2 JUN 22) AD CHART 2-18(30 JUN 22) / 2-18-1(30 JUN 22) AD CHART 2-19(10 MAR 22) / 2-19-1(26 AUG 21) AD CHART 2-20(10 MAR 22) / 2-20-1(26 AUG 21) AD CHART 2-21(30 JUN 22) / 2-21-1(30 JUN 22) AD CHART 2-22(10 MAR 22) / 2-22-1(26 AUG 21) AD CHART 2-23(30 JUN 22) / 2-23-1(30 JUN 22) AD CHART 2-24(10 MAR 22) / 2-24-1(26 AUG 21) AD CHART 2-25(10 MAR 22) / 2-25-1(26 AUG 21) AD CHART 2-26(10 MAR 22) / 2-26-1(26 AUG 21) AD CHART 2-27(30 JUN 22) / 2-27-1(30 JUN 22) AD CHART 2-28(2 JUN 22) / 2-28-1(2 JUN 22) AD CHART 2-29(26 AUG 21) / 2-30(26 AUG 21)	VOL III, Part III - AD (Aerodrome) RKJJ AD 2-17(12 JAN 23) / 2-18(12 JAN 23) AD CHART 2-11(12 JAN 23) / 2-11-1(12 JAN 23) AD CHART 2-12(12 JAN 23) / 2-12-1(30 JUN 22) AD CHART 2-13(12 JAN 23) / 2-13-1(12 JAN 23) AD CHART 2-14(12 JAN 23) / 2-14-1(12 JAN 23) AD CHART 2-15(12 JAN 23) / 2-15-1(21 NOV 19) AD CHART 2-16(12 JAN 23) / 2-16-1(12 JAN 23) AD CHART 2-17(12 JAN 23) / 2-17-1(12 JAN 23) AD CHART 2-18(12 JAN 23) / 2-18-1(12 JAN 23) AD CHART 2-19(12 JAN 23) / BLANK AD CHART 2-20(12 JAN 23) / 2-20-1(26 AUG 21) AD CHART 2-21(12 JAN 23) / 2-21-1(30 JUN 22) AD CHART 2-22(12 JAN 23) / 2-22-1(12 JAN 23) AD CHART 2-23(12 JAN 23) / 2-23-1(30 JUN 22) AD CHART 2-24(12 JAN 23) / 2-24-1(26 AUG 21) AD CHART 2-25(12 JAN 23) / 2-25-1(26 AUG 21) AD CHART 2-26(12 JAN 23) / 2-26-1(12 JAN 23) AD CHART 2-27(12 JAN 23) / 2-27-1(30 JUN 22) AD CHART 2-28(12 JAN 23) / 2-28-1(2 JUN 22) AD CHART 2-29(12 JAN 23) / 2-29-1(12 JAN 23) AD CHART 2-30(12 JAN 23) / 2-30-1(12 JAN 23) AD CHART 2-31(12 JAN 23) / 2-31-1(12 JAN 23) AD CHART 2-32(12 JAN 23) / 2-32-1(12 JAN 23) AD CHART 2-33(12 JAN 23) / 2-33-1(12 JAN 23) AD CHART 2-34(12 JAN 23) / 2-34-1(12 JAN 23) AD CHART 2-35(12 JAN 23) / 2-35-1(12 JAN 23) AD CHART 2-36(12 JAN 23) / 2-36-1(12 JAN 23) AD CHART 2-37(12 JAN 23) / 2-37-1(12 JAN 23) AD CHART 2-38(12 JAN 23) / 2-39(12 JAN 23)

END

ENR 5.5 AERIAL SPORTING AND RECREATIONAL ACTIVITIES

1. Ultralight vehicle flight areas

※ The entire area within Incheon FIR is designated as Ultralight vehicle flight restricted area except areas listed in the below table.

* : Unmanned Aerial Vehicles only. **: Airpark for Light aircraft and Ultralight vehicle exist.

<i>Designation and lateral limits</i>	<i>Vertical limits</i>	<i>Operator/User Tel NR.</i>	<i>Remarks and time of ACT</i>
(UA 2) GUSEONGSAN Circle with radius of 1.8 km (1.0 NM) centered on 354421N 1270027E	500 ft AGL SFC		
(UA 3) YAGSAN Circle with radius of 0.7 km (0.4 NM) centered on 354421N 1282502E	500 ft AGL SFC		
(UA 4) BONGHWASAN Circle with radius of 4.0 km (2.2 NM) centered on 353731N 1290532E	500 ft AGL SFC		
(UA 5) DEOKDUSAN Circle with radius of 4.5 km (2.4 NM) centered on 352441N 1273157E	500 ft AGL SFC		
(UA 6) GUMSAN Circle with radius of 2.1 km (1.1 NM) centered on 344411N 1275852E	500 ft AGL SFC		
(UA 9) YANGPYEONG 373010N 1272300E - 373010N 1273200E - 372700N 1273200E - 372700N 1272300E - to point of origin	500 ft AGL SFC		
(UA 10) GOCHANG Circle with radius of 4.0 km (2.2 NM) centered on 352311N 1264353E	500 ft AGL SFC		
(UA 14) GONGJU 363038N 1270033E - 363002N 1270713E - 362604N 1270553E - 362729N 1265750E - to the beginning	500 ft AGL SFC		
(UA 19) SIHWAHO 371751N 1264215E - 371724N 1265000E - 371430N 1265000E - 371315N 1264628E - 371245N 1264029E - 371244N 1263342E - 371414N 1263319E - to point of origin	500 ft AGL SFC		
(UA 21) BANG JANG SAN Circle with radius of 3.0 km (1.6 NM) centered on 352658N 1264417E	500 ft AGL SFC		
(UA 24) GUJOA Circle with radius of 2.8 km (1.5 NM) centered on 332841N 1264922E	500 ft AGL SFC		
(UA 25) HADONG 350147N 1274325E - 350145N 1274741E - 345915N 1274739E - 345916N 1274324E - to point of origin	500 ft AGL SFC		
(UA 26) JANG AM SAN 372338N 1282419E - 372410N 1282810E - 372153N 1282610E - 372211N 1282331E - to point of origin	500 ft AGL SFC		
(UA 27) MIAKSAN Circle with radius of 1.2 km (0.7 NM) centered on 331800N 1263316E	500 ft AGL SFC		
(UA 28) SEOUNSAN Circle with radius of 2.0 km(1.1 NM) centered on 365550N 1271659E	500 ft AGL SFC		

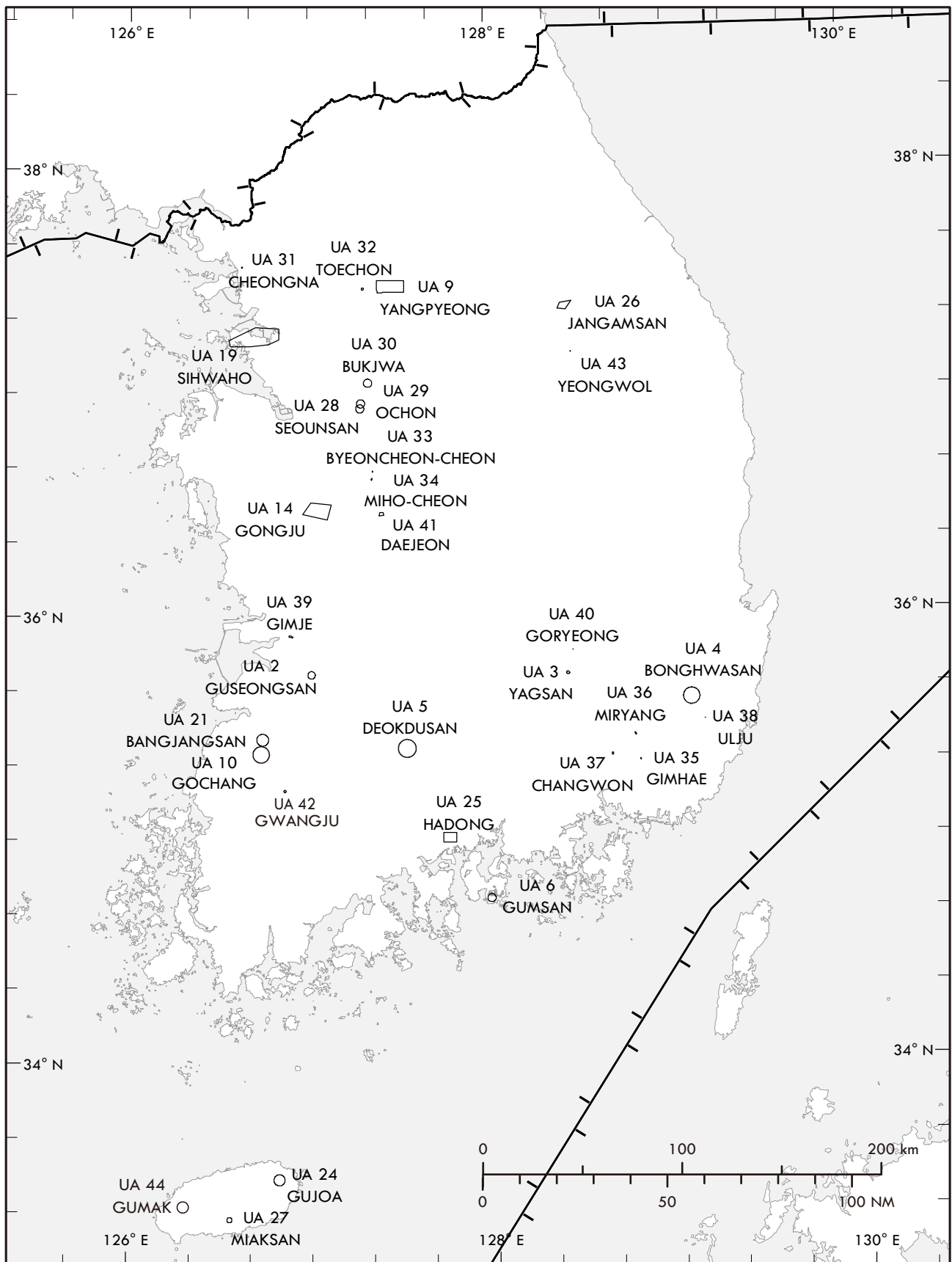
Change : Page control.

<i>Designation and lateral limits</i>	<i>Vertical limits</i>	<i>Operator/User Tel NR.</i>	<i>Remarks and time of ACT</i>
(UA 29) OCHON Circle with radius of 2.0 km(1.1 NM) centered on 365711N 1271716E	500 ft AGL SFC		
(UA 30) BUKJWA Circle with radius of 2.0 km(1.1 NM) centered on 370242N 1271940E	500 ft AGL SFC		
* (UA 31) CHEONGNA 373354N 1263730E - 373400N 1263744E - 373351N 1263750E - 373345N 1263736E - to point of origin	500 ft AGL SFC		
* (UA 32) TOECHON Circle with radius of 0.3 km(0.2 NM) centered on 372800N 1271809E	500 ft AGL SFC		
* (UA 33) BYEONCHEON- CHEON 363904N 1272103E - 363902N 1272111E - 363850N 1272106E - 363852N 1272059E - to point of origin	500 ft AGL SFC		
* (UA 34) MIHO-CHEON 363710N 1272048E - 363705N 1272105E - 363636N 1272049E - 363650N 1272033E - to point of origin	500 ft AGL SFC		
* (UA 35) GIMHAE 352057N 1284815E - 352101N 1284825E - 352047N 1284833E - 352043N 1284823E - to point of origin	500 ft AGL SFC		
* (UA 36) MIRYANG 352801N 1284642E - 352729N 1284714E - 352717N 1284659E - 352750N 1284627E - to point of origin	500 ft AGL SFC		
* (UA 37) CHANGWON 352238N 1283856E - 352238N 1283931E - 352216N 1283931E - 352213N 1283921E - 352213N 1283856E - to point of origin	500 ft AGL SFC		
* (UA 38) ULJU 353129N 1290947E - 353128N 1290957E - 353130N 1291001E - 353126N 1291003E - 353124N 1291001E - 353125N 1290946E - to the beginning	500 ft AGL SFC		
* (UA 39) GIMJE 355435N 1265304E - 355454N 1265257E - 355458N 1265339E - 355437N 1265420E - 355420N 1265408E - 355439N 1265331E - to point of origin	500 ft AGL SFC		
* (UA 40) GORYEONG Circle with radius of 80 m(0.05 NM) centered on 355034N 1282639E	500 ft AGL SFC		
* (UA 41) DAEJEON 362754N 1272326E - 362757N 1272427E - 362710N 1272439E - 362707N 1272306E - to the beginning	500 ft AGL SFC	DAEJEON CITY Tel : 042-930-4419	Active : 0900-1600 (KST)
* (UA 42) GWANGJU Circle with radius of 50 m(0.03 NM) centered on 351318N 1265142E	500 ft AGL SFC	KOTSA Tel : 031-645-2108	Only for Unmanned Aerial Vehicle practical test Active : TUE-WED 0800-1800 (KST)
* (UA 43) YEONGWOL 371036N 1282739E - 371031N 1282745E - 371029N 1282743E - 371034N 1282737E - to the beginning	500 ft AGL SFC	KOTSA Tel : 031-645-2108	Only for Unmanned Aerial Vehicle practical test Active : TUE-WED 0800-1800 (KST)
(UA 44) GUMAK Circle with radius of 1.5 NM centered on 332127N 1261820E	1 900 ft AMSL SFC	Jeju Paragliding Association Tel : 064-758-2676	Only for Paragliding (Recommended)

Change : Establishment of UA 44(GUMAK).

AERIAL SPORTING AND RECREATIONAL ACTIVITIES -INDEX CHART

The entire area within Incheon FIR is designated as Ultralight vehicle flight restricted area except the following areas



Change : Establishment of UA 44(GUMAK).

RADIO FACILITY - INDEX CHART

TO BE DEVELOPED

Type of aid, MAG VAR, Type of supported OPS	ID	Frequency	Hours of operation	Position of transmitting antenna coordinates	Elevation of DME transmitting antenna	Remarks
1	2	3	4	5	6	7
LOC 14L (9° W/2020) ILS CAT I (9° W/2020) GP 14L	ISEL	109.90 MHz	H24	373244.6N 1264834.7E		RWY 14L LOC unusable beyond 12 NM from GP-DME and beyond 10° Left side of the Course not flight check due to RK P518 Scheduled inspection time : Every 2nd THU(1400-1900 UTC) of the month
DME 14L	ISEL	997 MHz (CH 36X)	H24	373403.9N 1264648.2E	30 m	
IM 14L	-	333.8 MHz	H24	373403.8N 1264648.1E		
LOC 32R (9° W/2020) ILS CAT I (9° W/2020)	ISKP	110.70 MHz	H24	373421.9N 1264632.6E		
DME 32R	ISKP	1005 MHz (CH 44X)	H24	373421.7N 1264632.8E	30 m	RWY 32R LOC unusable beyond 10° Right side of the Course not flight check due to RK P73A/B Scheduled inspection time : Every 3rd THU(1400-1900 UTC) of the month
GP 32R	-	330.2 MHz	H24	373256.3N 1264812.9E		
IM 32R	-	75 MHz	H24	373256.4N 1264813.1E		
LOC 32L (9° W/2020) ILS CAT I (9° W/2020)	IKMO	108.30 MHz	H24	373244.5N 1264834.9E		
DME 32L	IKMO	981 MHz (CH 20X)	H24	373413.4N 1264622.6E	30 m	RWY 32L LOC unusable beyond 12° NE side of the course due to RK P73 Scheduled inspection time : Every 4th THU(1400-1900 UTC) of the month
GP 32L		334.1 MHz	H24	373257.2N 1264751.2E		
VOR/DME (Yangju) (9° W/2020)	YJU	114.90 MHz (CH 96X)	H24	373257.3N 1264751.2E		
				374453N 1265928E		VOR/DME unusable - RDL 081 clockwise RDL 100 beyond 20 NM not flight check due to RK P518 - RDL 125 clockwise RDL 155 beyond 30 NM due to RK R17 - RDL 155 clockwise RDL 220 not flight check due to RK P73A/73B - RDL 250 clockwise RDL 265 beyond 30 NM not flight check due to RK P518 - RDL 265 clockwise RDL 271 beyond 20 NM not flight check due to RK P518 - RDL 271 clockwise RDL 081 not flight check due to RK P518
Scheduled Inspection Time						
ASDE : Every 3rd TUE(0100-0800 UTC) of the month when visibility is at or above 5 km(VMC). RADAR (PSR, SSR) : Every 2nd, 4th WED (1400-1900 UTC) of the month. SEL(VORTAC) : Every 3rd TUE (1500-2000 UTC) of the month. Yangju(VOR/DME) : Every 2nd WED (1500-2000 UTC) of the month. ※ The information of VORTAC SEL see ENR 4.1 for details.						

RKSS AD 2.20 LOCAL AERODROME REGULATIONS

1. Airport regulations
 - 1.1 All aircraft with 2 engines or more(except helicopter) shall fly IFR at Gimpo international Airport for departures and arrivals.
 - 1.2 Pilots are strongly required to monitor VHF 121.5 MHz when flying within SEOUL TMA.
 - 1.3 Pilot shall exercise extreme caution to avoid penetrating Prohibited Area (P518, P73A/B, etc) and Special Use Airspace (ACMI, R17, etc), especially when flying north of R 280 KIP, R 100 SEL and east of the extended centerline of runway 14/32.
 - 1.4 Pilots should always make sure that microphones are not stuck in the transmitting position before transmission in order to prevent frequency blockage (stuck mike) from impairing ATC.
 - 1.5 Special Regulations for Use of the Gimpo Airport (RKSS)

Aircraft on international flight may be permitted to use the Gimpo Airport (RKSS) under the following conditions;

1. Aircraft

- a. Private aircraft which is owned by an enterprise or a person, except the following aircraft;
 - 1) Public charter which is not scheduled,
 - 2) Inclusive tour charter,
 - 3) Aircraft having a seating capacity of more than 50 passengers
 - 4) Aircraft having a maximum payload capacity of 2 721 kg (6 000 lbs) or more,
 - 5) Aircraft carrying commercial goods (including free-of-charge carriage), or
 - 6) State aircraft which is not owned by an enterprise or a person.
- b. Ferry-flight of an aircraft which is Korean-registered and internationally operating for the purpose of import, maintenance or charter flight support.

2. Restriction

The use of the Gimpo Airport may not be permitted when required for certain reasons, including the shortage of airport capacity, safety or security.

3. Permitted Hours : 2100-1400 UTC, daily (In other hours, the Incheon International Airport or the other airports should be used.)

1.6

Landing Procedure

1. Landing to RWY(14R/32L)

- a. Recommendation for increase RWY(14R/32L) operation capacity, except for wet or contaminated : recommend to use Rapid Exit Taxiways and fully vacate within 60 seconds after touchdown.
- b. If possible, maintain speed at or above 30 kt IAS until reaching Rapid Exit Taxiway "C1" or "E1".

RWY	RET	Taxi Procedure	Distance from Threshold
14R	C1	After landing, vacate via C1 then hold short of RWY 14L. Remain on the TWR frequency.	6 397 ft/1 950 m
32L	E1	After landing, vacate via E1 then hold short of RWY 32R. Remain on the TWR frequency.	6 512 ft/1 985 m

* Note : The Exit of "D1" will be available by pilot's discretion.

2. Landing to RWY(14L/32R)

Unless otherwise cleared by ATC, aircrafts are advised to vacate RWY as follow;

RWY	RET	Taxi Procedure
32R	D3	After landing, vacate via D3.
14L	C2	After landing, vacate via C2.

* If unable to follow the above RWY vacating routes, pilots should notify it to ATC.

1.7

Taxiway Classification

Taxiway	B1, B2, D1, D2, D3, G1, G2, P	Up to code letter "F" available ※ Refer to RKSS AD 2-22
	A, C1, C2, C3, E1, E2, F1, F2	Up to code letter "E" available
	W1, W2	Up to code letter "B" available
Holding bay	G2	Up to code letter "E" available
Taxilane	P1	Up to code letter "F" available
	N1, N2, N3, N4, P2, P3, P4, P5, P6, R, RD	Up to code letter "E" available
	T, S	Up to code letter "B" available
	N5	Up to code letter "C" available

* NOTE :

- 1) When ACFT holding within G2 holding bay, code F ACFT is not available on adjacent parallel TWY G2.
- 2) No TOLL installed on G2 holding bay.

1.8

Load Limitations

Runway	14R/32L, 14L/32R	None
Taxiway	B1, B2, C1, C2, C3, D1, D2, D3, E1, E2, F1, F2, G1, W1, W2	None
	A, G2, P	B787-900 (Up to 240 413 kg)
Taxilane	P1, P2, P3, P4, P5, P6, N1, N2, N3, N4, N5, R, RD	B787-900 (Up to 240 413 kg)
Apron	East, Central	None
	North	B787-900 (Up to 240 413 kg)

1.9

Parking Stands Confirmation Procedure

All general aviation aircraft (fixed & rotary wing) operator who plans to fly to Gimpo International Airport should contact with airport operator (airside operations team) at least 1 day before the flight (before filing flight plan), to confirm aircraft stand availability.
Contact : +82-2-2660-2566~7

Change : Establishment of G2 holding bay and NOTE.

RKJJ AD 2.23 ADDITIONAL INFORMATION

1. Special VFR not Authorized.
2. Bird concentrates in the vicinity of airport

The birds' feeding areas consist of surrounding farmland and greens along the river and they frequently move to get their habitat (located QDR 300°, 5 000 m from end of RWY 22R). In the winter, the ducks frequently move at the rise and the set of sun and the lapwings frequently fly before sunset. In the summer, the egrets at the rise of sun and the snipes at the set of sun fly most frequently.

The flying heights are various such as from the ground to 600 m.

The control tower is going to provide the information on the activity of birds and estimated height to the pilots if it is possible. At the same time, the pilots are informed to turn on the landing light in the process of taking off, approach for landing, climbing, and descending as far as the designed limit of aircraft facility allows.

To eliminate the birds, we are using the blank cartridge, signal gun, and loudspeaker. As well, we are operating several equipments including explosive sounds, alarm, sky dancer. For environmental management, we are carrying out various activities simultaneously to prevent the installation of rubbish dump and wastewater treatment plant, and to limit the kinds of trees and the farming in the airport.

3. Use extreme caution, field is surrounded by high angle firing range(RK R14).

RKJJ AD 2.24 CHART RELATED TO THE AERODROME

Aerodrome Chart - ICAO	RKJJ AD CHART 2-1
Aircraft Parking / Docking Chart - ICAO	RKJJ AD CHART 2-3
Aerodrome Ground Movement Chart - ICAO	RKJJ AD CHART 2-4
Aerodrome Obstacle Chart - ICAO - Type A	RKJJ AD CHART 2-5
Aerodrome Obstacle Chart - ICAO - Type A	RKJJ AD CHART 2-6
Aerodrome Obstacle Chart - ICAO - Type A	RKJJ AD CHART 2-7
Aerodrome Obstacle Chart - ICAO - Type A	RKJJ AD CHART 2-8
Aerodrome Obstacle Chart - ICAO - Type B	RKJJ AD CHART 2-9
Area Chart - ICAO	RKJJ AD CHART 2-10
SID - RWY 04L/R - RNAV IPSAE 1	RKJJ AD CHART 2-11
SID - RWY 04L/R - GWANGJU 3	RKJJ AD CHART 2-12
SID - RWY 22L/R - RNAV MUJIN 1	RKJJ AD CHART 2-13
SID - RWY 22L/R - GWANGJU 4	RKJJ AD CHART 2-14
SID - RWY 04L/R / RWY 22L/R - GWANGJU 5	RKJJ AD CHART 2-15
STAR - RWY 04L/R - RNAV NOVEM 1	RKJJ AD CHART 2-16
STAR - RWY 04L/R - RNAV XEROX 1	RKJJ AD CHART 2-17
STAR - RWY 22L/R - RNAV FRISA 1	RKJJ AD CHART 2-18
ATC Surveillance Minimum Altitude Chart - ICAO	RKJJ AD CHART 2-19
Instrument Approach Chart - RWY 04R - ILS/DME	RKJJ AD CHART 2-20
Instrument Approach Chart - RWY 04R - LOC/DME	RKJJ AD CHART 2-21
Instrument Approach Chart - RWY 04R - RNP	RKJJ AD CHART 2-22
Instrument Approach Chart - RWY 04R - VOR/DME	RKJJ AD CHART 2-23
Instrument Approach Chart - RWY 04R - PAR	RKJJ AD CHART 2-24
Instrument Approach Chart - RWY 04R - ASR	RKJJ AD CHART 2-25
Instrument Approach Chart - RWY 04L - RNP	RKJJ AD CHART 2-26
Instrument Approach Chart - RWY 04L - VOR/DME	RKJJ AD CHART 2-27
Instrument Approach Chart - RWY 04L - PAR	RKJJ AD CHART 2-28
Instrument Approach Chart - RWY 04L - ASR	RKJJ AD CHART 2-29
Instrument Approach Chart - RWY 22L - LOC/DME	RKJJ AD CHART 2-30
Instrument Approach Chart - RWY 22L - RNP	RKJJ AD CHART 2-31
Instrument Approach Chart - RWY 22L - VOR/DME	RKJJ AD CHART 2-32
Instrument Approach Chart - RWY 22L - ASR	RKJJ AD CHART 2-33
Instrument Approach Chart - RWY 22R - RNP	RKJJ AD CHART 2-34
Instrument Approach Chart - RWY 22R - VOR/DME	RKJJ AD CHART 2-35
Instrument Approach Chart - RWY 22R - PAR	RKJJ AD CHART 2-36
Instrument Approach Chart - RWY 22R - ASR	RKJJ AD CHART 2-37
Visual Approach Chart - ICAO	RKJJ AD CHART 2-38
Bird concentrates in the vicinity of airport	RKJJ AD CHART 2-39

Change : Establishment of new procedures and Information of chart NR..

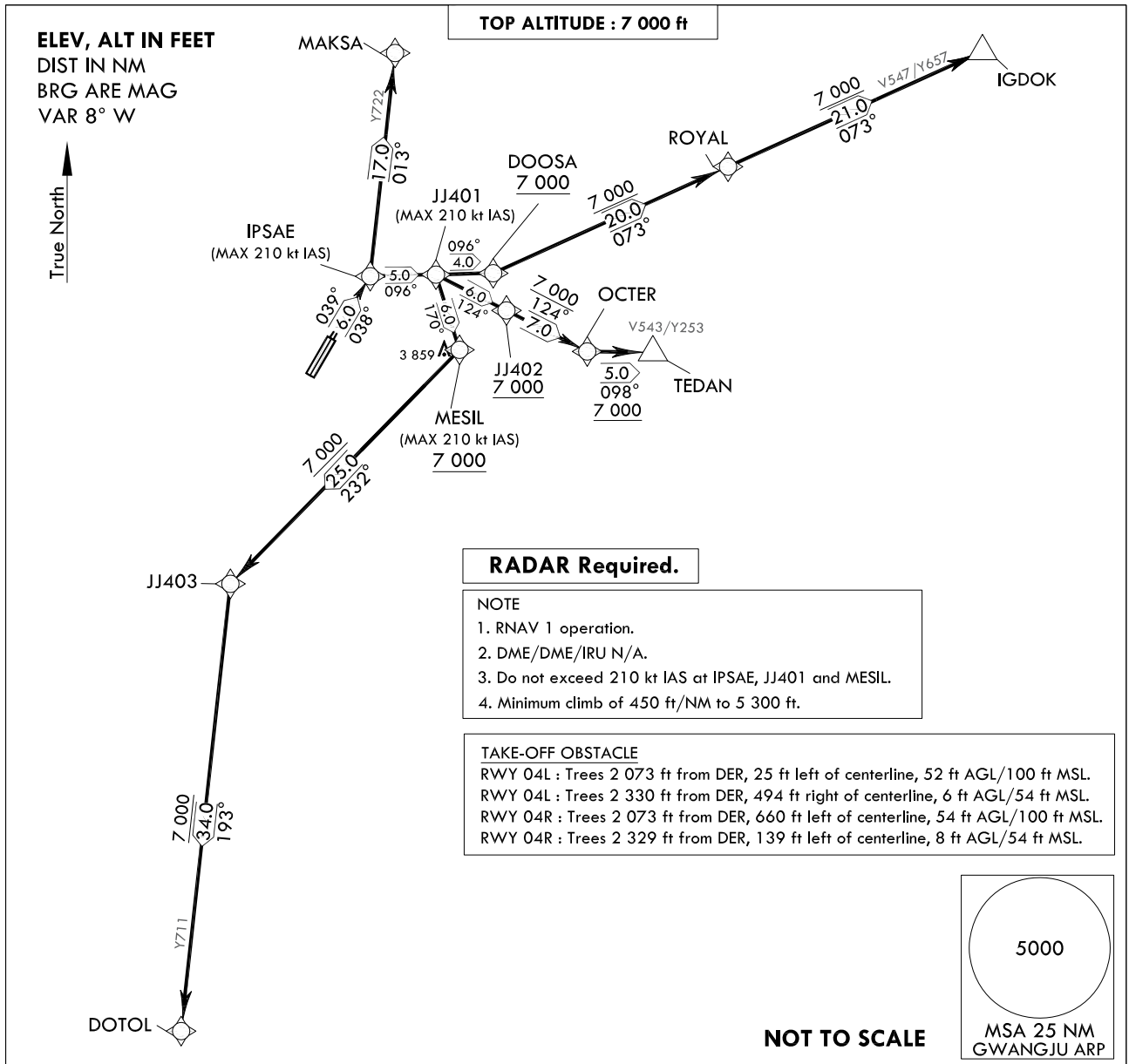
**STANDARD DEPARTURE CHART
INSTRUMENT (SID)**

TRANSITION ALT 14 000
TRANSITION LVL FL 140

GWANGJU DEP 124.0, 124.7
347.2
GWANGJU TWR 118.05
254.6

GWANGJU/Gwangju(RKJJ)
RWY 04L/R
RNAV IPSAE 1

Note : Departure under U.S. TERPS.



DEPARTURE ROUTE DESCRIPTION

TAKE-OFF RWY 04R : Climb on course 038° to IPSAE, thence.....

TAKE-OFF RWY 04L : Climb on course 039° to IPSAE, thence.....

.....transition routes and expect further clearance to filed altitude after departure.

MAKSA Transition : From IPSAE track 013° to MAKSA.

IGDOK Transition : From IPSAE track 096° to JJ401 and track 096° to DOOSA at or above 7 000 ft,
then track 073° to ROYAL and track 073° to IGDOK.

TEDAN Transition : From IPSAE track 096° to JJ401 and track 124° to JJ402 at or above 7 000 ft,
then track 124° to OCTER and track 098° to TEDAN.

DOTOL Transition : From IPSAE track 096° to JJ401 and track 170° to MESIL at or above 7 000 ft,
then track 232° to JJ403 and track 193° to DOTOL.

Change : New procedure.

OFFICE OF CIVIL AVIATION

AIRAC AIP AMDT 1/23
Effective : 1600UTC 22 FEB 2023

GWANGJU/Gwangju(RKJJ)
RWY 04L/R
RNAV IPSAE 1

AERONAUTICAL DATA TABULATION

Standard Instrument Departure Procedure Coding Tables

RNAV IPSAE 1 - MAKSA Transition

Serial Number	Path Descriptor	Waypoint Identifier	Fly-over	Course/Track °M(°T)	Distance (NM)	Turn direction	Altitude (ft)	Speed (kt)	Coordinates	VPA/ RDH	Navigation specification	Remarks
001	CF	IPSAE	-	04L-039 (031.0) 04R-038 (029.9)	5.7	-	-	-210	35°13'07.6"N 126°52'30.1"E	-	RNAV 1	-
002	TF	MAKSA	-	013 (005.1)	17.1	-	-	-210	35°30'11.3"N 126°54'22.0"E	-	RNAV 1	-

RNAV IPSAE 1 - IGDKOK Transition

Serial Number	Path Descriptor	Waypoint Identifier	Fly-over	Course/Track °M(°T)	Distance (NM)	Turn direction	Altitude (ft)	Speed (kt)	Coordinates	VPA/ RDH	Navigation specification	Remarks
001	CF	IPSAE	-	04L-039 (031.0) 04R-038 (029.9)	5.7	-	-	-210	35°13'07.6"N 126°52'30.1"E	-	RNAV 1	-
002	TF	JJ401	-	096 (087.4)	5.0	-	-	-210	35°13'21.1"N 126°58'35.9"E	-	RNAV 1	-
003	TF	DOOSA	-	096 (087.5)	4.4	-	-	-	35°13'32.6"N 127°03'54.5"E	-	RNAV 1	-
004	TF	ROYAL	-	073 (064.5)	19.6	-	+7 000	-	35°21'59.1"N 127°25'33.7"E	-	RNAV 1	-
005	TF	IGDKOK	-	073 (064.7)	21.3	-	+7 000	-	35°31'03.6"N 127°49'06.6"E	-	RNAV 1	-

RNAV IPSAE 1 - TEDAN Transition

Serial Number	Path Descriptor	Waypoint Identifier	Fly-over	Course/Track °M(°T)	Distance (NM)	Turn direction	Altitude (ft)	Speed (kt)	Coordinates	VPA/ RDH	Navigation specification	Remarks
001	CF	IPSAE	-	04L-039 (031.0) 04R-038 (029.9)	5.7	-	-	-210	35°13'07.6"N 126°52'30.1"E	-	RNAV 1	-
002	TF	JJ401	-	096 (087.4)	5.0	-	-	-210	35°13'21.1"N 126°58'35.9"E	-	RNAV 1	-
003	TF	JJ402	-	124 (115.8)	6.0	-	-	-	35°10'43.6"N 127°05'12.9"E	-	RNAV 1	-
004	TF	OCTER	-	124 (115.8)	6.9	-	+7 000	-	35°07'43.0"N 127°12'46.3"E	-	RNAV 1	-
005	TF	TEDAN	-	098 (089.8)	5.0	-	+7 000	-	35°07'43.8"N 127°18'52.1"E	-	RNAV 1	-

RNAV IPSAE 1 - DOTOL Transition

Serial Number	Path Descriptor	Waypoint Identifier	Fly-over	Course/Track °M(°T)	Distance (NM)	Turn direction	Altitude (ft)	Speed (kt)	Coordinates	VPA/ RDH	Navigation specification	Remarks
001	CF	IPSAE	-	04L-039 (031.0) 04R-038 (029.9)	5.7	-	-	-210	35°13'07.6"N 126°52'30.1"E	-	RNAV 1	-
002	TF	JJ401	-	096 (087.4)	5.0	-	-	-210	35°13'21.1"N 126°58'35.9"E	-	RNAV 1	-
003	TF	MESIL	-	170 (161.5)	6.0	-	-	-210	35°07'39.2"N 127°00'55.4"E	-	RNAV 1	-
004	TF	JJ403	-	232 (223.2)	24.9	-	+7 000	-	34°49'26.5"N 126°40'11.4"E	-	RNAV 1	-
005	TF	DOTOL	-	193 (185.0)	34.3	-	+7 000	-	34°15'15.4"N 126°36'36.6"E	-	RNAV 1	-

Change : New procedure.

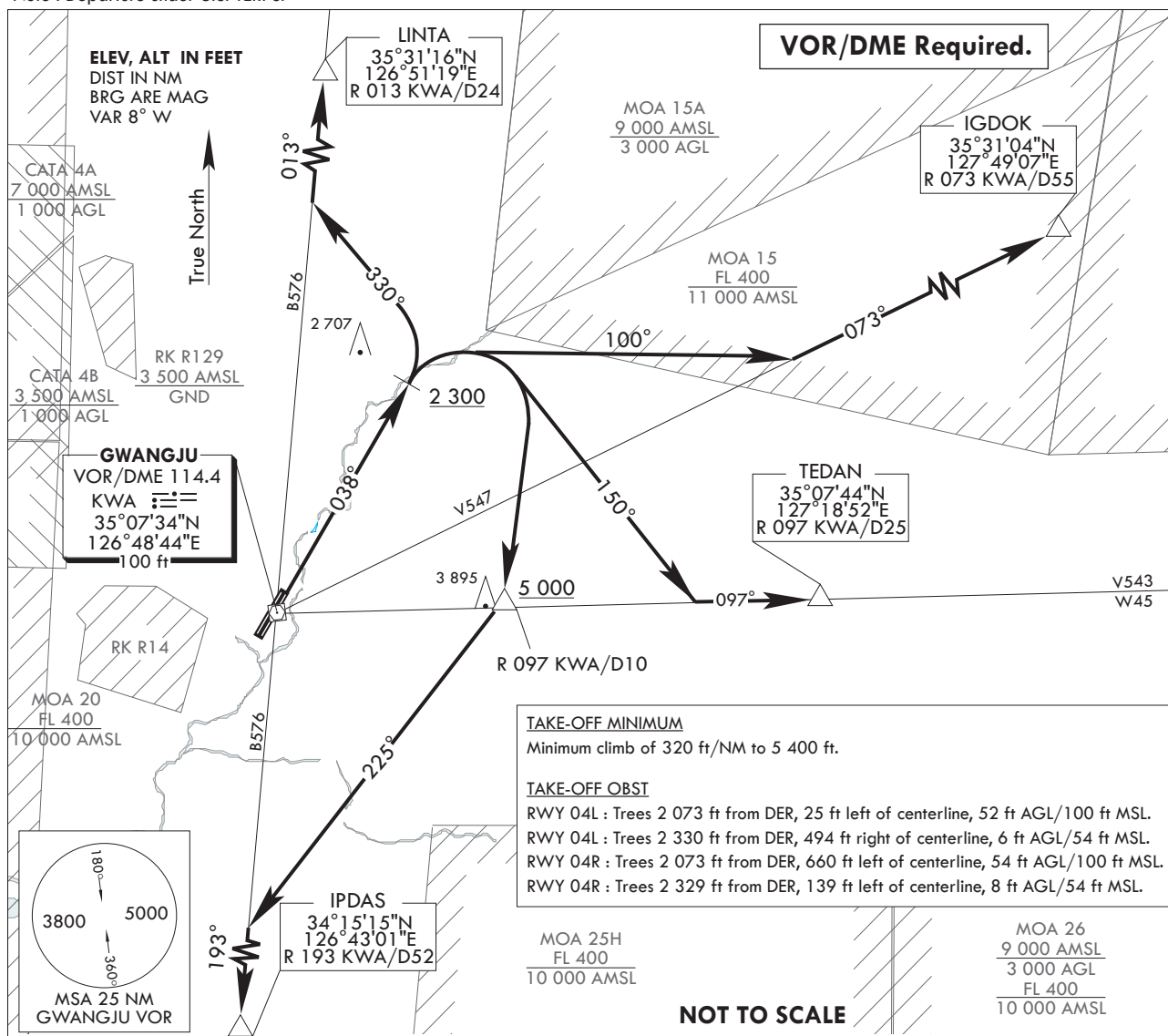
**STANDARD DEPARTURE CHART
INSTRUMENT (SID)**

TRANSITION ALT 14 000
TRANSITION LVL FL 140

GWANGJU DEP 124.0, 124.7
347.2
GWANGJU TWR 118.05
254.6

GWANGJU/Gwangju(RKJJ)
RWY 04L/R
GWANGJU 3

Note : Departure under U.S. TERPS.



DEPARTURE ROUTE DESCRIPTION

TAKE-OFF RWY 04R/L : Climb HDG 038° to 2 300 ft, then.....
..... Climb to assigned or specified altitude via (the following transition routes).

LINTA transition : Left turn HDG 330° to intercept R 013 KWA and R 013 KWA to LINTA.

IGDOK transition : Right turn HDG 100° to intercept R 073 KWA and R 073 KWA to IGDOK.

TEDAN transition : Right turn HDG 150° to intercept R 097 KWA and R 097 KWA to TEDAN.

IPDAS transition : Right turn direct to R 097 KWA/D10 at or above 5 000 ft,
then right turn HDG 225° to intercept R 193 KWA and R 193 KWA to IPDAS.

INTENTIONALLY

LEFT

BLANK

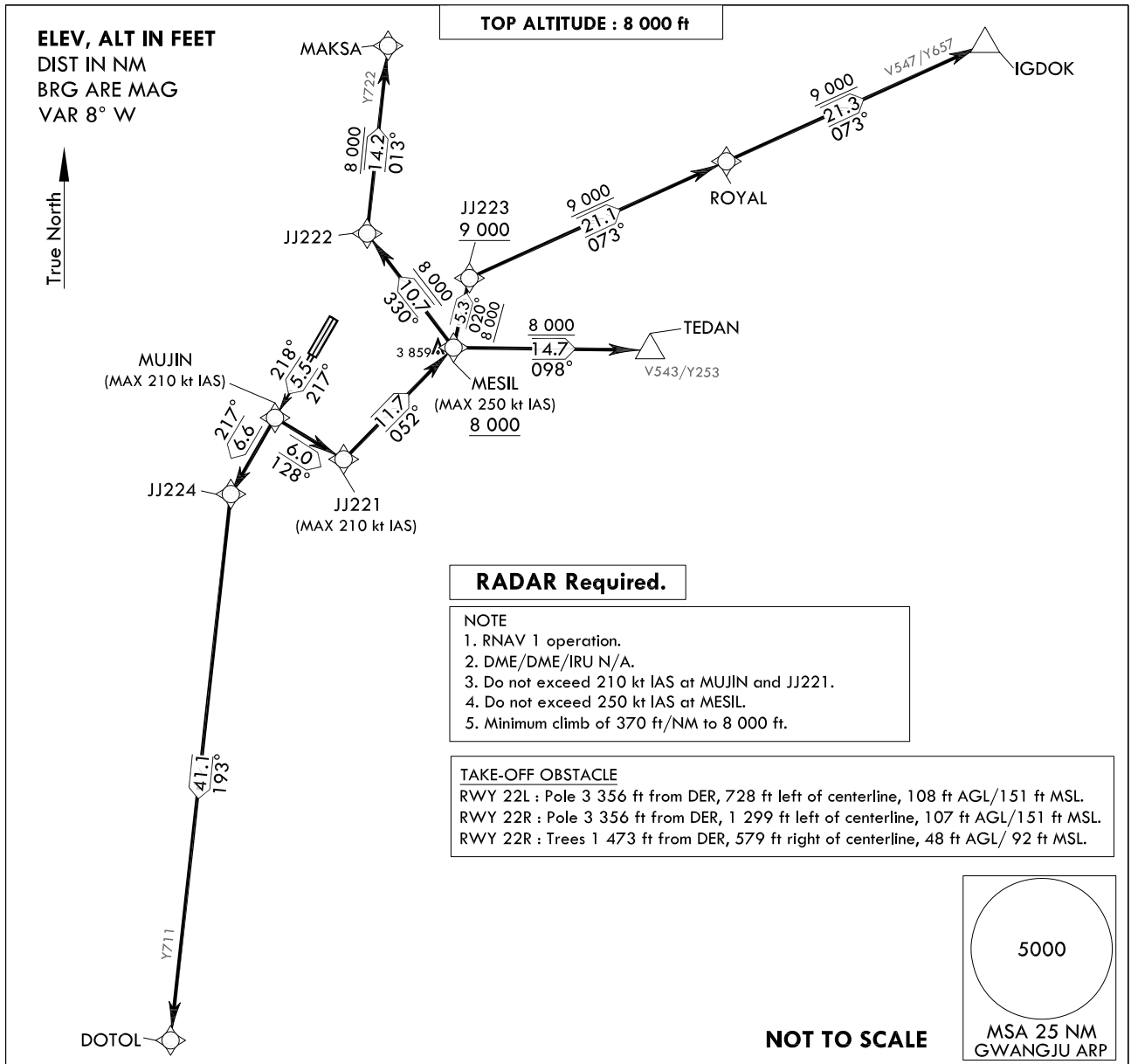
**STANDARD DEPARTURE CHART
INSTRUMENT (SID)**

TRANSITION ALT 14 000
TRANSITION LVL FL 140

GWANGJU DEP 124.0, 124.7
347.2
GWANGJU TWR 118.05
254.6

GWANGJU/Gwangju(RKJJ)
RWY 22L/R
RNAV MUJIN 1

Note : Departure under U.S. TERPS.



DEPARTURE ROUTE DESCRIPTION

TAKE-OFF RWY 22R : Climb on course 217° to IPSAE, thence.....

TAKE-OFF RWY 22L : Climb on course 218° to IPSAE, thence.....

.....transition routes and expect further clearance to filed altitude after departure.

DOTOL Transition : From MUJIN track 217° to JJ224 and track 193° to DOTOL.

TEDAN Transition : From MUJIN track 128° to JJ221 and track 052° to MESIL at or above 8 000 ft,
then track 098° to TEDAN.

IGDOK Transition : From MUJIN track 128° to JJ221 and track 052° to MESIL at or above 8 000 ft,
then track 020° to JJ223 and track 073° to ROYAL and track 073° to IGDOK.

MAKSA Transition : From MUJIN track 128° to JJ221 and track 052° to MESIL at or above 8 000 ft,
then track 330° to JJ222 and track 013° to MAKSA.

Change : New procedure.

GWANGJU/Gwangju(RKJJ)
RWY 22L/R
RNAV MUJIN 1

AERONAUTICAL DATA TABULATION

Standard Instrument Departure Procedure Coding Tables

RNAV MUJIN 1 - DOTOL Transition

Serial Number	Path Descriptor	Waypoint Identifier	Fly-over	Course/Track °M(°T)	Distance (NM)	Turn direction	Altitude (ft)	Speed (kt)	Coordinates	VPA/ RDH	Navigation specification	Remarks
001	CF	MUJIN	-	22L-218 (209.9) 22R-217 (208.8)	5.5	-	-	-210	35°02'06.6"N 126°44'47.0"E	-	RNAV 1	-
002	TF	JJ224	-	217 (208.8)	6.6	-	-	-210	34°56'18.9"N 126°40'54.9"E	-	RNAV 1	-
003	TF	DOTOL	-	193 (185.0)	41.1	-	-	-	34°15'15.4"N 126°36'36.6"E	-	RNAV 1	-

RNAV MUJIN 1 - TEDAN Transition

Serial Number	Path Descriptor	Waypoint Identifier	Fly-over	Course/Track °M(°T)	Distance (NM)	Turn direction	Altitude (ft)	Speed (kt)	Coordinates	VPA/ RDH	Navigation specification	Remarks
001	CF	MUJIN	-	22L-218 (209.9) 22R-217 (208.8)	5.5	-	-	-210	35°02'06.6"N 126°44'47.0"E	-	RNAV 1	-
002	TF	JJ221	-	128 (119.9)	6.0	-	-	-210	34°59'06.8"N 126°51'06.8"E	-	RNAV 1	-
003	TF	MESIL	-	052 (043.3)	11.7	-	-	-250	35°07'39.2"N 127°00'55.4"E	-	RNAV 1	-
004	TF	TEDAN	-	098 (089.6)	14.7	-	+8 000	-	35°07'43.8"N 127°18'52.1"E	-	RNAV 1	-

RNAV MUJIN 1 - IGDKOK Transition

Serial Number	Path Descriptor	Waypoint Identifier	Fly-over	Course/Track °M(°T)	Distance (NM)	Turn direction	Altitude (ft)	Speed (kt)	Coordinates	VPA/ RDH	Navigation specification	Remarks
001	CF	MUJIN	-	22L-218 (209.9) 22R-217 (208.8)	5.5	-	-	-210	35°02'06.6"N 126°44'47.0"E	-	RNAV 1	-
002	TF	JJ221	-	128 (119.9)	6.0	-	-	-210	34°59'06.8"N 126°51'06.8"E	-	RNAV 1	-
003	TF	MESIL	-	052 (043.3)	11.7	-	-	-250	35°07'39.2"N 127°00'55.4"E	-	RNAV 1	-
004	TF	JJ223	-	020 (011.8)	5.3	-	+8 000	-	35°12'53.6"N 127°02'15.1"E	-	RNAV 1	-
005	TF	ROYAL	-	073 (064.5)	21.1	-	+9 000	-	35°21'59.1"N 127°25'33.7"E	-	RNAV 1	-
006	TF	IGDKOK	-	073 (064.7)	21.3	-	+9 000	-	35°31'03.6"N 127°49'06.6"E	-	RNAV 1	-

RNAV MUJIN 1 - MAKSA Transition

Serial Number	Path Descriptor	Waypoint Identifier	Fly-over	Course/Track °M(°T)	Distance (NM)	Turn direction	Altitude (ft)	Speed (kt)	Coordinates	VPA/ RDH	Navigation specification	Remarks
001	CF	MUJIN	-	22L-218 (209.9) 22R-217 (208.8)	5.5	-	-	-210	35°02'06.6"N 126°44'47.0"E	-	RNAV 1	-
002	TF	JJ221	-	128 (119.9)	6.0	-	-	-210	34°59'06.8"N 126°51'06.8"E	-	RNAV 1	-
003	TF	MESIL	-	052 (043.3)	11.7	-	-	-250	35°07'39.2"N 127°00'55.4"E	-	RNAV 1	-
004	TF	JJ222	-	330 (321.8)	10.7	-	+8 000	-	35°16'04.6"N 126°52'49.4"E	-	RNAV 1	-
005	TF	MAKSA	-	013 (005.1)	14.2	-	+8 000	-	35°30'11.3"N 126°54'22.0"E	-	RNAV 1	-

Change : New procedure.

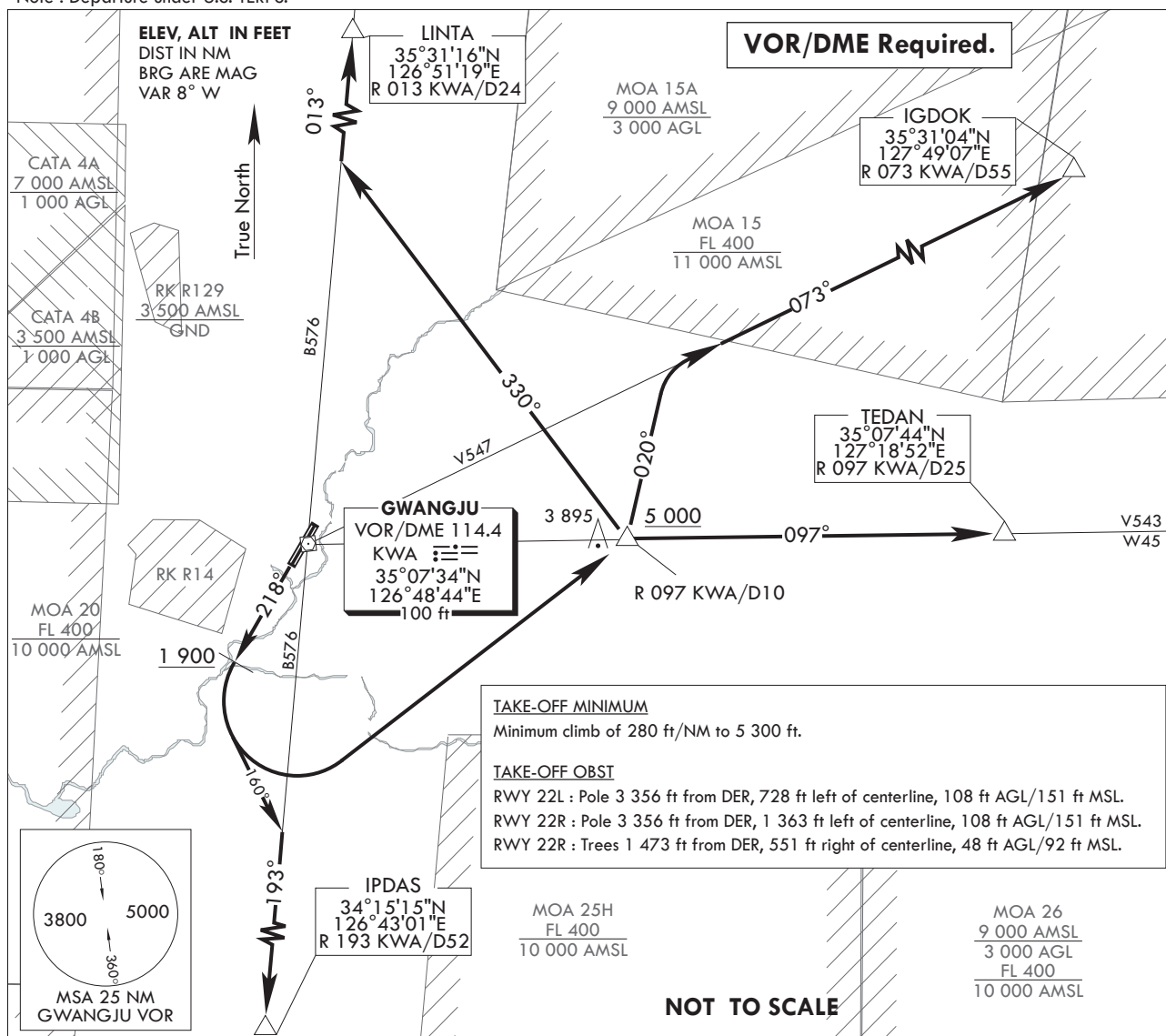
**STANDARD DEPARTURE CHART
INSTRUMENT (SID)**

TRANSITION ALT 14 000
TRANSITION LVL FL 140

GWANGJU DEP 124.0, 124.7
347.2
GWANGJU TWR 118.05
254.6

GWANGJU/Gwangju(RKJJ)
RWY 22L/R
GWANGJU 4

Note : Departure under U.S. TERPS.



DEPARTURE ROUTE DESCRIPTION

TAKE-OFF RWY 22L/R : Climb HDG 218° to 1 900 ft, thence.....
..... Climb to assigned or specified altitude via (the following transition routes).

IPDAS transition : Left turn HDG 160° to intercept R 193 KWA and R 193 KWA to IPDAS.

LINTA transition : Left turn direct to R 097 KWA/D10 at or above 5 000 ft, then left turn HDG 330° to intercept R 013 KWA and R 013 KWA to LINTA.

IGDOK transition : Left turn direct to R 097 KWA/D10 at or above 5 000 ft, then left turn HDG 020° to intercept R 073 KWA and R 073 KWA to IGDOK.

TEDAN transition : Left turn direct to R 097 KWA/D10 at or above 5 000 ft, then right turn direct to TEDAN.

INTENTIONALLY

LEFT

BLANK

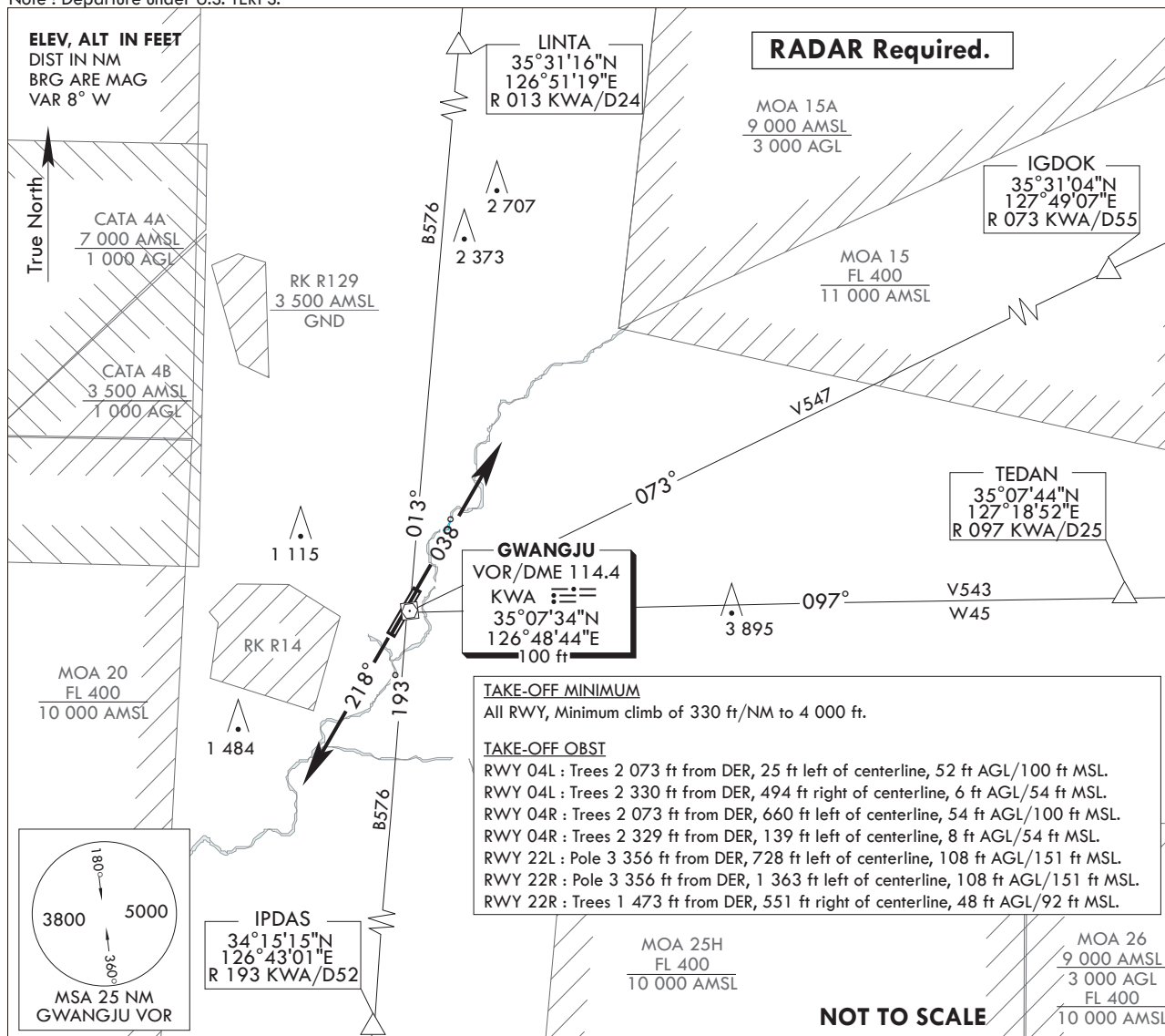
**STANDARD DEPARTURE CHART
INSTRUMENT (SID)**

TRANSITION ALT 14 000
TRANSITION LVL FL 140

GWANGJU DEP 124.0, 124.7
347.2
GWANGJU TWR 118.05
254.6

GWANGJU/Gwangju(RKJJ)
RWY 04L/R, 22L/R
GWANGJU 5

Note : Departure under U.S. TERPS.



DEPARTURE ROUTE DESCRIPTION

TAKE-OFF RWY 04L/R : Climb HDG 038°, thence.....

TAKE-OFF RWY 22L/R : Climb HDG 218°, thence.....

..... Except radar vectors to intercept filed Enroute fix or Navaid.
Maintain 8 000 ft or assigned altitude(flight level).
Expect filed altitude/fligh level within 10 minutes after departure.

LOST COMMUNICATIONS : If radio contact is not established with departure control prior to reaching 4 000 ft, continue climb to 8 000 ft before turning to filed fix/Navaid and proceed filed route and altitude.

INTENTIONALLY

LEFT

BLANK

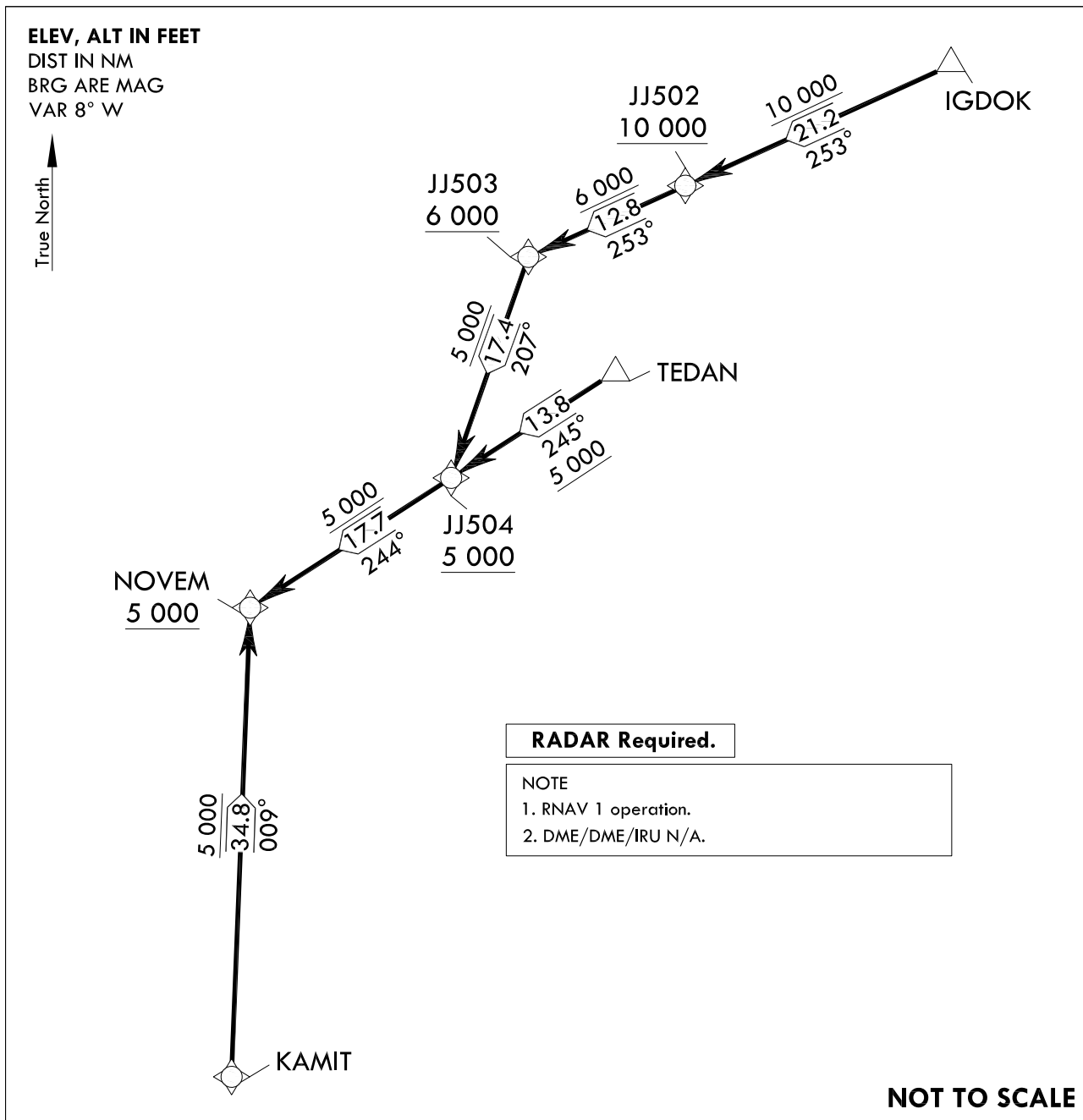
**STANDARD ARRIVAL CHART
INSTRUMENT(STAR)**

TRANSITION ALT 14 000
TRANSITION LVL FL 140

GWANGJU APP 130.0
228.9
GWANGJU TWR 118.05
254.6

GWANGJU/Gwangju(RKJJ)
RWY 04L/R
RNAV NOVEM 1

Note : Arrival under U.S. TERPS.



ARRIVAL ROUTE DESCRIPTION

LANDING RUNWAY 04L/04R : Expect RNP approach following transition routes.

The following are transition routes.

IGDOK transition : From IGDOK on track 253° to JJ502 at or above 10 000 ft, then track 253° to JJ503 at or above 6 000 ft, then track 207° to JJ504 at or above 5 000 ft, then track 244° to NOVEM at or above 5 000 ft.

TEDAN transition : From TEDAN on track 245° to JJ504 at or above 5 000 ft, then track 244° to NOVEM at or above 5 000 ft.

KAMIT transition : From KAMIT on track 009° to NOVEM at or above 5 000 ft.

Change : New procedure.

GWANGJU/Gwangju(RKJJ)
RWY 04L/R
RNAV NOVEM 1

AERONAUTICAL DATA TABULATION

Standard Instrument Arrival Procedure Coding Tables

RNAV NOVEM 1 - IGDKOK Transition

Serial Number	Path Descriptor	Waypoint Identifier	Fly-over	Course/Track °M(°T)	Distance (NM)	Turn direction	Altitude (ft)	Speed (kt)	Coordinates	VPA/ RDH	Navigation specification	Remarks
001	TF	IGDKOK	-	-	-	-	-	-	35°31'03.6"N 127°49'06.6"E	-	RNAV 1	-
002	TF	JJ502	-	253 (244.9)	21.2	-	+10 000	-	35°22'00.0"N 127°25'35.7"E	-	RNAV 1	Outside of 30 NM ARP
003	TF	JJ503	-	253 (244.7)	12.8	-	+6 000	-	35°16'31.0"N 127°11'29.8"E	-	RNAV 1	-
004	TF	JJ504	-	207 (198.2)	17.4	-	+5 000	-	35°00'00.4"N 127°04'53.5"E	-	RNAV 1	-
005	TF	NOVEM	-	244 (236.0)	17.7	-	+5 000	-	34°50'03.9"N 126°47'02.3"E	-	RNAV 1	-

RNAV NOVEM 1 - TEDAN Transition

Serial Number	Path Descriptor	Waypoint Identifier	Fly-over	Course/Track °M(°T)	Distance (NM)	Turn direction	Altitude (ft)	Speed (kt)	Coordinates	VPA/ RDH	Navigation specification	Remarks
001	TF	TEDAN	-	-	-	-	-	-	35°07'43.8"N 127°18'52.1"E	-	RNAV 1	-
002	TF	JJ504	-	245 (236.2)	13.8	-	+5 000	-	35°00'00.4"N 127°04'53.5"E	-	RNAV 1	-
003	TF	NOVEM	-	244 (236.0)	17.7	-	+5 000	-	34°50'03.9"N 126°47'02.3"E	-	RNAV 1	-

RNAV NOVEM 1 - KAMIT Transition

Serial Number	Path Descriptor	Waypoint Identifier	Fly-over	Course/Track °M(°T)	Distance (NM)	Turn direction	Altitude (ft)	Speed (kt)	Coordinates	VPA/ RDH	Navigation specification	Remarks
001	TF	KAMIT	-	-	-	-	-	-	34°15'14.1"N 126°46'17.7"E	-	RNAV 1	-
002	TF	NOVEM	-	009 (001.0)	34.8	-	+5 000	-	34°50'03.9"N 126°47'02.3"E	-	RNAV 1	-

Change : New procedure.

**STANDARD ARRIVAL CHART
INSTRUMENT(STAR)**

TRANSITION ALT 14 000
TRANSITION LVL FL 140

GWANGJU APP 130.0
228.9
GWANGJU TWR 118.05
254.6

GWANGJU/Gwangju(RKJJ)
RWY 04L/R
RNAV XEROX 1

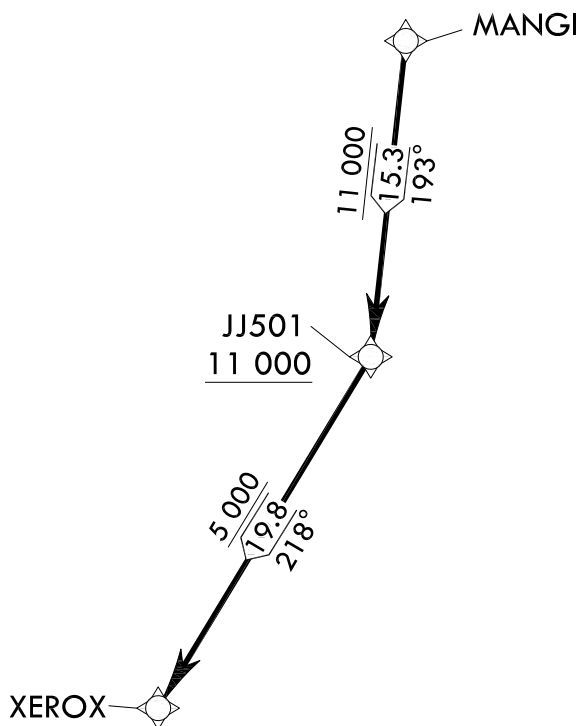
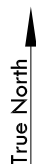
Note : Arrival under U.S. TERPS.

ELEV, ALT IN FEET

DIST IN NM

BRG ARE MAG

VAR 8° W



RADAR Required.

NOTE

1. RNAV 1 operation.
2. DME/DME/IRU N/A.

NOT TO SCALE

ARRIVAL ROUTE DESCRIPTION

LANDING RUNWAY 04L/04R : Expect RNP approach following transition routes.

The following is transition route.

MANGI transition : From MANGI on track 193° to JJ501 at or above 11 000 ft,
then track 218° to XEROX at or above 5 000 ft.

Change : New procedure.

Standard Instrument Arrival Procedure Coding Tables										
RNAV XEROX 1 - MANGI Transition										
Serial Number	Path Descriptor	Waypoint Identifier	Fly-over	Course/Track °M(°T)	Distance (NM)	Turn direction	Altitude (ft)	Speed (kt)	Coordinates	VPA/ RDH
001	TF	MANGI	-	-	-	-	-	-	35°30'11.3"N 126°44'31.7"E	-
002	TF	JJ501	-	193 (185.0)	15.3	-	+11 000	-	35°14'54.0"N 126°42'53.6"E	-
003	TF	XEROX	-	218 (209.9)	19.8	-	+5 000	-	34°57'41.4"N 126°30'53.8"E	-
										Navigation specification
										Remarks

**STANDARD ARRIVAL CHART
INSTRUMENT(STAR)**

TRANSITION ALT 14 000
TRANSITION LVL FL 140

GWANGJU APP 130.0
228.9
GWANGJU TWR 118.05
254.6

GWANGJU/Gwangju(RKJJ)
RWY 22L/R
RNAV FRISA 1

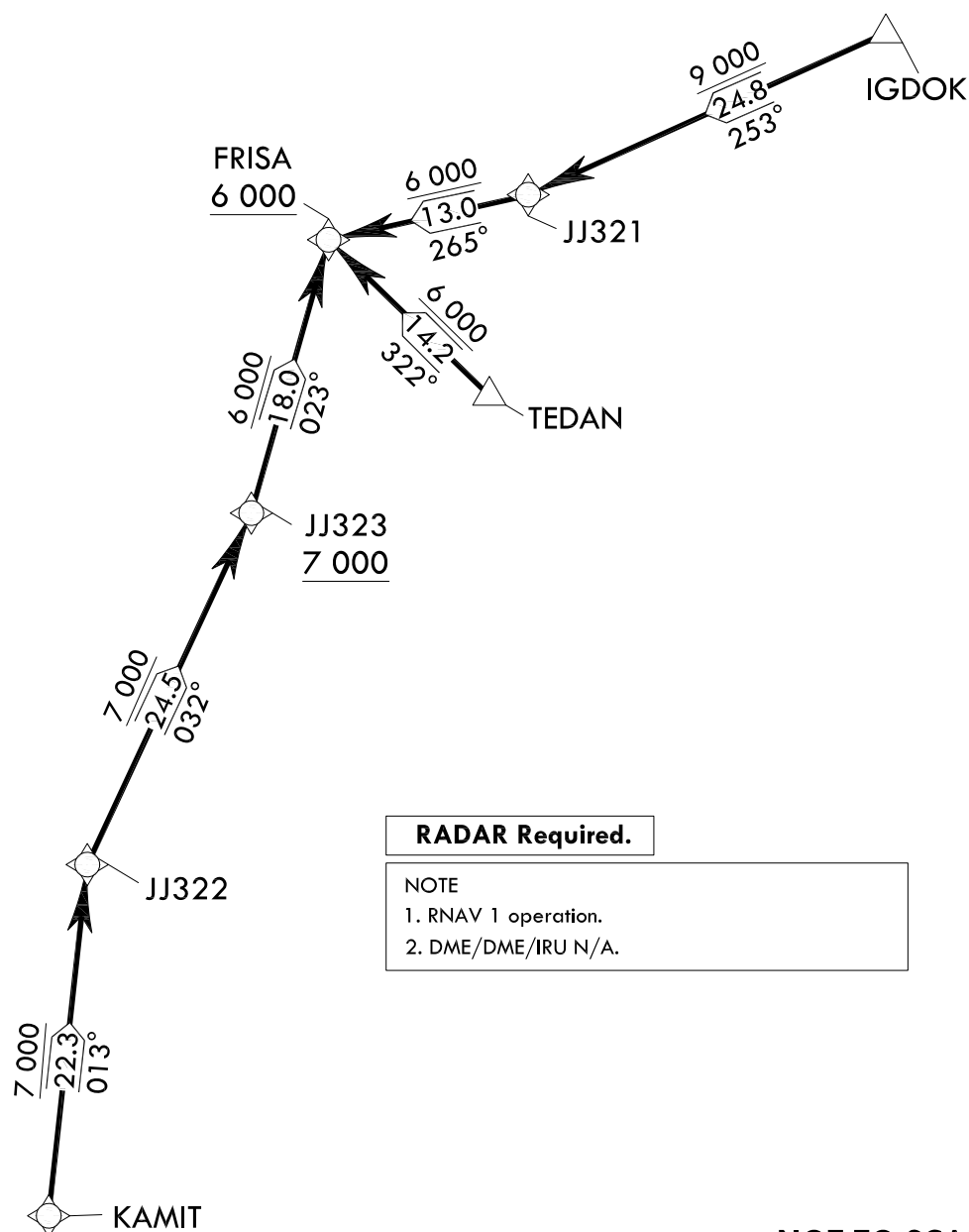
Note : Arrival under U.S. TERPS.

ELEV, ALT IN FEET

DIST IN NM

BRG ARE MAG

VAR 8° W



NOT TO SCALE

ARRIVAL ROUTE DESCRIPTION

LANDING RUNWAY 22L/22R : Expect RNP approach following transition routes.

The following are transition routes.

IGDOK transition : From IGDOK on track 253° to JJ321 at or above 9 000 ft,
then track 265° to FRISA at or above 6 000 ft.

TEDAN transition : From TEDAN on track 322° to FRISA at or above 6 000 ft.

KAMIT transition : From KAMIT on track 013° to JJ322 at or above 7 000 ft, then track 032° to JJ323
at or above 7 000 ft, then track 023° to FRISA at or above 6 000 ft.

Change : New procedure.

OFFICE OF CIVIL AVIATION

AIRAC AIP AMDT 1/23
Effective : 1600UTC 22 FEB 2023

GWANGJU/Gwangju(RKJJ)
RWY 22L/R
RNAV FRISA 1

AERONAUTICAL DATA TABULATION

Standard Instrument Arrival Procedure Coding Tables

RNAV FRISA 1 - IGDKOK Transition

Serial Number	Path Descriptor	Waypoint Identifier	Fly-over	Course/Track °M(°T)	Distance (NM)	Turn direction	Altitude (ft)	Speed (kt)	Coordinates	VPA/ RDH	Navigation specification	Remarks
001	TF	IGDKOK	-	-	-	-	-	-	35°31'03.6"N 127°49'06.6"E	-	RNAV 1	-
002	TF	JJ321	-	253 (244.9)	24.8	-	+9 000	-	35°20'27.5"N 127°21'37.3"E	-	RNAV 1	-
003	TF	FRISA	-	265 (256.5)	13.0	-	+6 000	-	35°17'25.0"N 127°06'14.5"E	-	RNAV 1	-

RNAV FRISA 1 - TEDAN Transition

Serial Number	Path Descriptor	Waypoint Identifier	Fly-over	Course/Track °M(°T)	Distance (NM)	Turn direction	Altitude (ft)	Speed (kt)	Coordinates	VPA/ RDH	Navigation specification	Remarks
001	TF	TEDAN	-	-	-	-	-	-	35°07'43.8"N 127°18'52.1"E	-	RNAV 1	-
002	TF	FRISA	-	322 (313.1)	14.2	-	+6 000	-	35°17'25.0"N 127°06'14.5"E	-	RNAV 1	-

RNAV FRISA 1 - KAIMT Transition

Serial Number	Path Descriptor	Waypoint Identifier	Fly-over	Course/Track °M(°T)	Distance (NM)	Turn direction	Altitude (ft)	Speed (kt)	Coordinates	VPA/ RDH	Navigation specification	Remarks
001	TF	KAIMT	-	-	-	-	-	-	34°15'14.1"N 126°46'17.7"E	-	RNAV 1	-
002	TF	JJ322	-	013 (005.0)	22.3	-	+7 000	-	34°37'31.6"N 126°48'40.2"E	-	RNAV 1	-
003	TF	JJ323	-	032 (023.8)	24.5	-	+7 000	-	35°00'00.3"N 127°00'41.7"E	-	RNAV 1	-
004	TF	FRISA	-	023 (014.6)	18.0	-	+6 000	-	35°17'25.0"N 127°06'14.5"E	-	RNAV 1	-

Change : New procedure.

TMA Gwangju

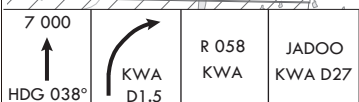
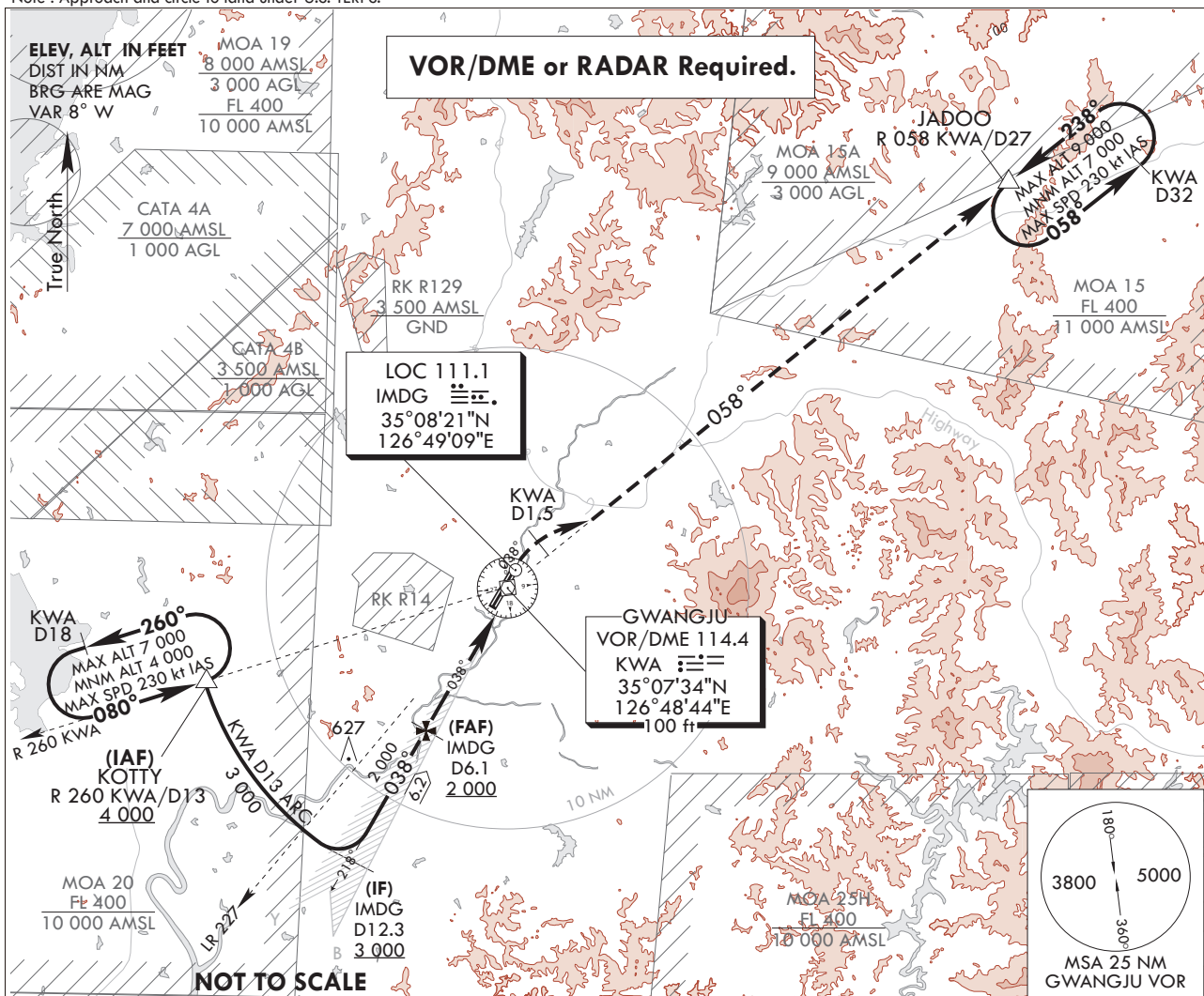
**INSTRUMENT
APPROACH
CHART**

AERODROME ELEV 48 ft
HEIGHTS RELATE TO
THR RWY 04R - ELEV 43 ft
HIGHEST ELEV TDZ 46 ft

GWANGJU APP 130.0
228.9
GWANGJU TWR 118.05
254.6

GWANGJU/Gwangju(RKJJ)
ILS/DME RWY 04R

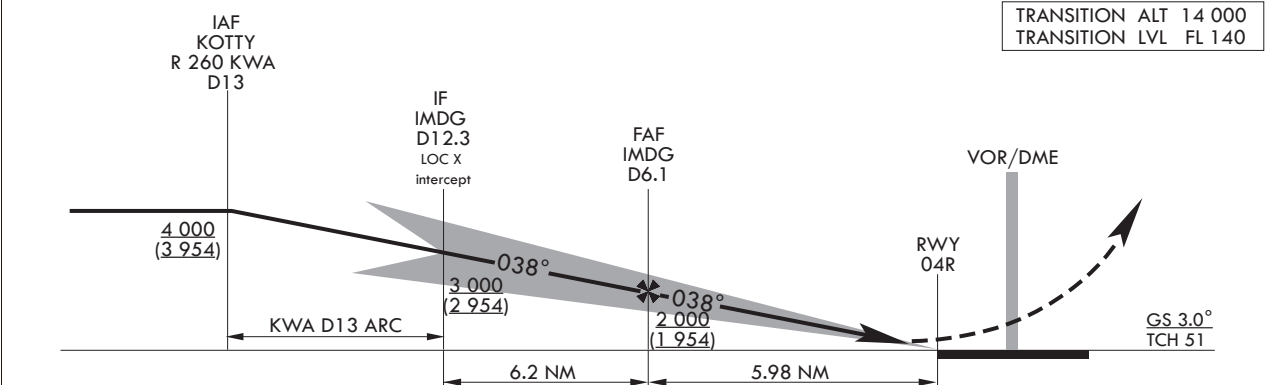
Note : Approach and circle to land under U.S. TERPS.



MISSED APPROACH

Climb to 7 000 ft on HDG 038° to KWA D1.5, and climbing right turn to intercept R 058 KWA and track on R 058 KWA to JADOO and hold, continue climb-in-hold to 7 000 ft.

TRANSITION ALT 14 000
TRANSITION LVL FL 140



CATEGORY	A	B	C	D
S-ILS 04R		246/24 200(200-1/2)		
S-ILS 04R (ALS INOP)		246/40 200(200-3/4)		

* Circling not authorized.

Change : Page control.

INTENTIONALLY

LEFT

BLANK

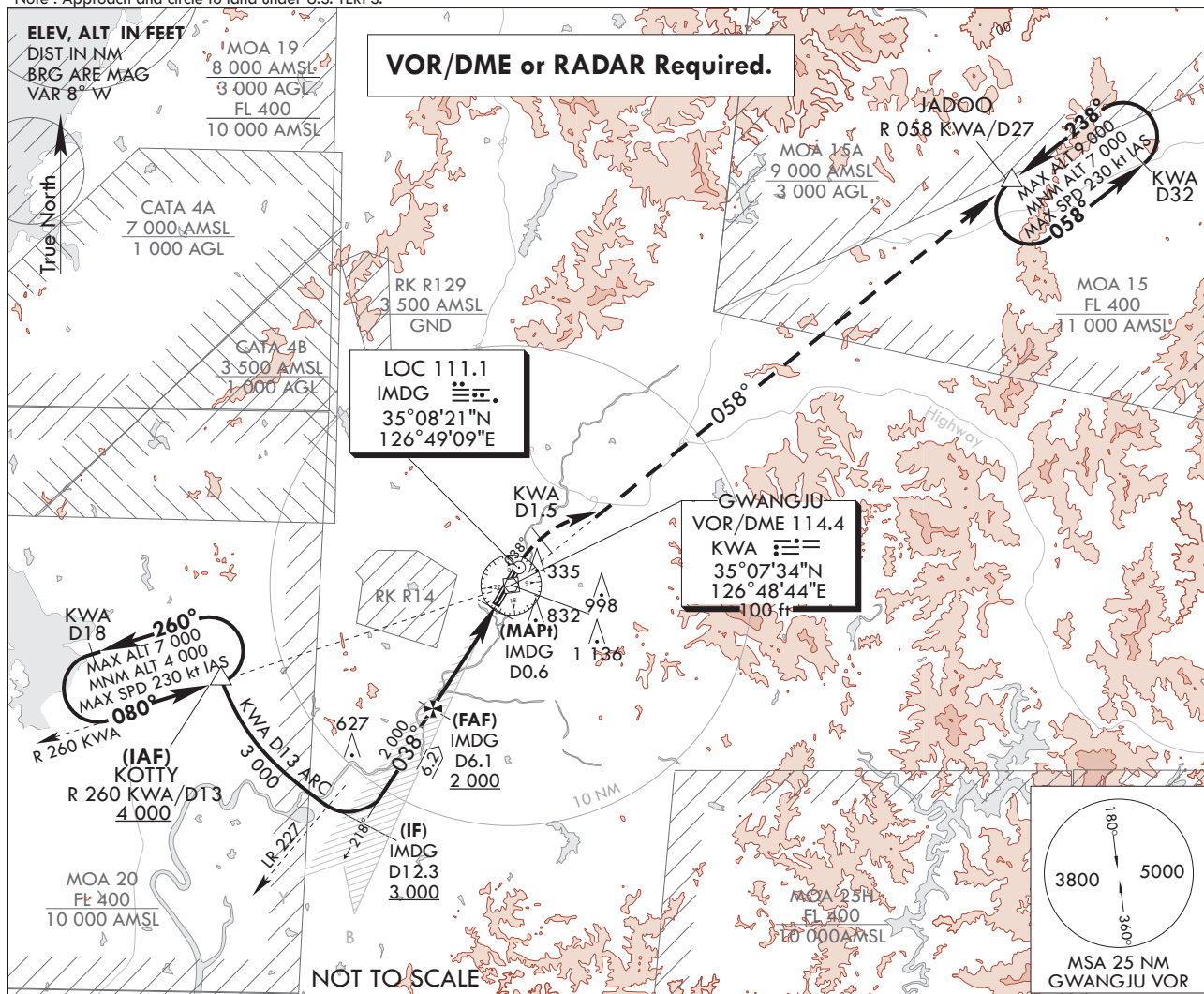
**INSTRUMENT
APPROACH
CHART**

AERODROME ELEV 48 ft
HEIGHTS RELATE TO
THR RWY 04R - ELEV 43 ft
HIGHEST ELEV TDZ 46 ft

GWANGJU APP 130.0
228.9
GWANGJU TWR 118.05
254.6

**GWANGJU/Gwangju(RKJJ)
LOC/DME RWY 04R**

Note : Approach and circle to land under U.S. TERPS.

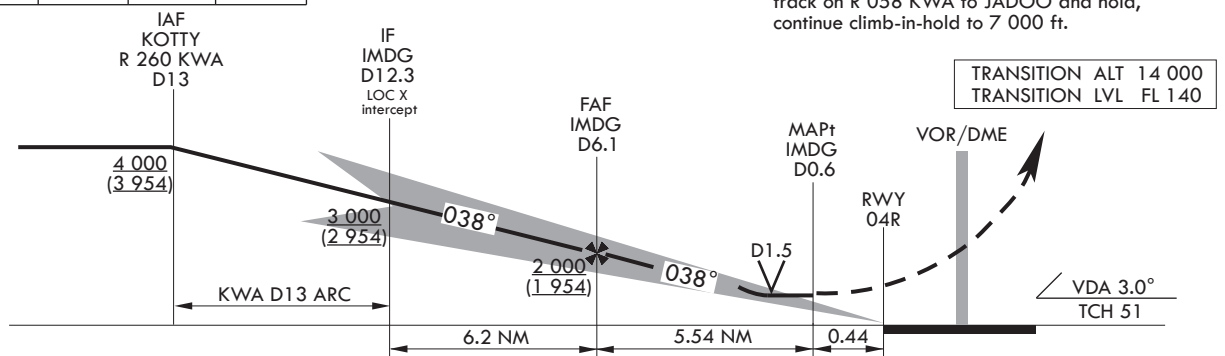


7 000
↑
HDG 038°

R 058 KWA
JADOO KWA D27

Use IMDG DME when on the LOC course.

MISSED APPROACH
Climb to 7 000 ft on HDG 038° to KWA D1.5, and climbing right turn to intercept R 058 KWA and track on R 058 KWA to JADOO and hold, continue climb-in-hold to 7 000 ft.



CATEGORY	A	B	C	D
S-LOC 04R	520/40 474(500-3/4)		520/50 474(500-1)	
S-LOC 04R (ALS INOP)	520/55 474(500-1)		520-1 3/8 474(500-1 3/8)	
CIRCLING*	720-1 672(700-1)	1 140-1 1/2 1 092(1 100-1 1/2)	1 140-3 1 092(1 100-3)	1 380-3 1 332(1 400-3)

* Circling not authorized for west of RWY 04-22.

Change : Page control.

INTENTIONALLY

LEFT

BLANK

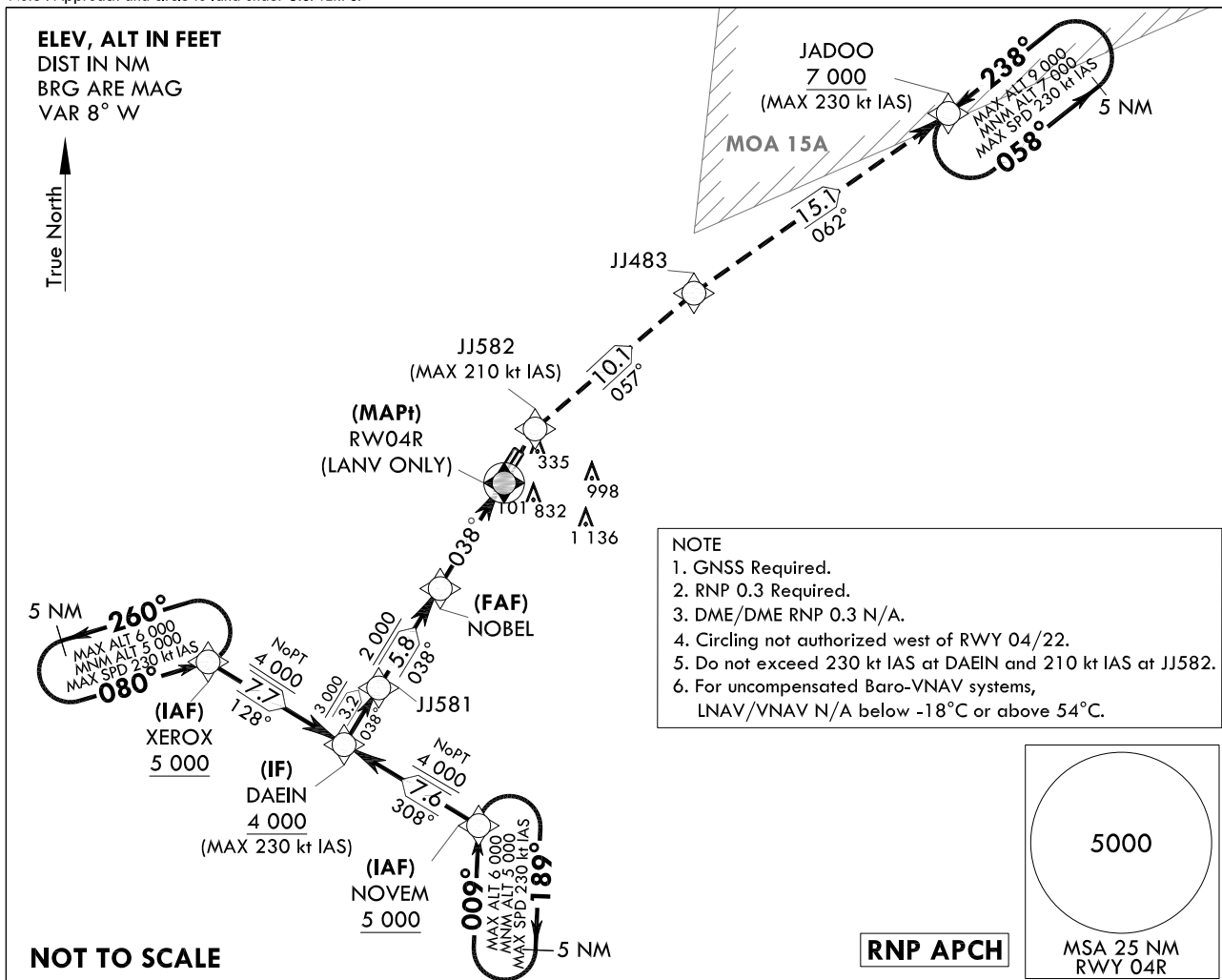
**INSTRUMENT
APPROACH
CHART**

AERODROME ELEV 48 ft
HEIGHTS RELATED TO
THR RWY 04R - ELEV 43 ft
HIGHEST ELEV TDZ 46 ft

GWANGJU APP 130.0
228.9
GWANGJU TWR 118.05
254.6

GWANGJU/Gwangju(RKJJ)
RNP RWY 04R

Note : Approach and circle to land under U.S. TERPS.

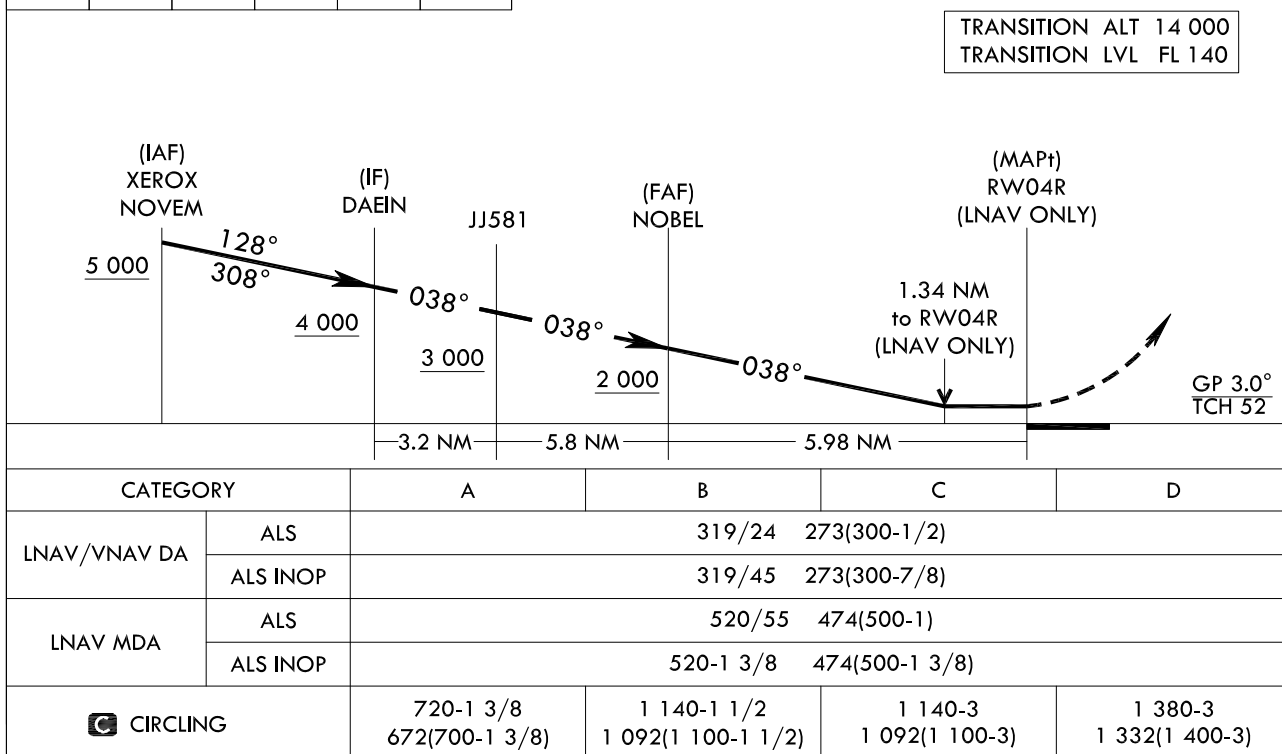


7 000	JJ582	TR	JJ483	TR	JADOO
↑	✧	057°	✧	062°	7 000

MISSED APPROACH

Climb to 7 000 ft on direct to JJ582 and track 057° to JJ483 and track 062° to JADOO and hold, continue climb-in-hold to 7 000 ft.

TRANSITION ALT 14 000
TRANSITION LVL FL 140



Change : New procedure.

OFFICE OF CIVIL AVIATION

AIRAC AIP AMDT 1/23
Effective : 1600UTC 22 FEB 2023

AERONAUTICAL DATA TABULATION

Instrument Approach Procedure Coding Tables

RNP RWY 04R via XEROX to DAEIN(IF)

Serial Number	Path Descriptor	Waypoint Identifier	Fly-over	Course/Track M(°T)	Distance (NM)	Turn direction	Altitude (ft)	Speed (kt)	Coordinates	VPA/ TCH	Navigation specification	Remarks
001	IF	XEROX	-	-	-	-	+5 000	-230	34°57'41.4"N 126°30'53.8"E	-	RNP APCH	IAF
002	TF	DAEIN	-	128 (119.8)	7.7	-	+4 000	-230	34°53'51.4"N 126°39'01.7"E	-	RNP APCH	IF NoPT

RNP RWY 04R via NOVEN to DAEIN(IF)

Serial Number	Path Descriptor	Waypoint Identifier	Fly-over	Course/Track M(°T)	Distance (NM)	Turn direction	Altitude (ft)	Speed (kt)	Coordinates	VPA/ TCH	Navigation specification	Remarks
001	IF	NOVEN	-	-	-	-	+5 000	-230	34°50'04.0"N 126°47'02.3"E	-	RNP APCH	IAF
002	TF	DAEIN	-	308 (299.9)	7.6	-	+4 000	-230	34°53'51.4"N 126°39'01.7"E	-	RNP APCH	IF NoPT

RNP RWY 04R - via DAEIN(IF) to MAHF

Serial Number	Path Descriptor	Waypoint Identifier	Fly-over	Course/Track M(°T)	Distance (NM)	Turn direction	Altitude (ft)	Speed (kt)	Coordinates	VPA/ TCH	Navigation specification	Remarks
001	TF	DAEIN	-	-	-	-	+4 000	-230	34°53'51.4"N 126°39'01.7"E	-	RNP APCH	IF
002	TF	JJ581	-	038 (029.8)	3.2	-	+3 000	-	34°56'38.2"N 126°40'57.9"E	-	RNP APCH	-
003	TF	NOBEL	-	038 (029.9)	5.8	-	+2 000	-	35°01'41.5"N 126°44'29.5"E	-3.0/52	RNP APCH	FAF
004	TF	RW04R	Y	038 (029.9)	6.0	-	-	-	35°06'53.1"N 126°48'07.4"E	-	RNP APCH	MAP LNAV ONLY
005	DF	JJ582	-	-	-	-	-	-210	35°09'21.0"N 126°49'51.1"E	-	RNP APCH	-
006	TF	JJ483	-	057 (048.2)	10.1	-	-	-	35°16'05.6"N 126°59'03.3"E	-	RNP APCH	-
007	TF	JADOO	-	062 (053.6)	15.1	-	+7 000	-230	35°25'02.6"N 127°13'54.1"E	-	RNP APCH	-
008	HM	JADOO	-	238 (229.6)	-	L	+9 000 +7 000	-230	35°25'02.6"N 127°13'54.1"E	-	-	HOLDING 5 NM LEG
009	HM	XEROX	-	080 (071.6)	-	L	+6 000 +5 000	-230	34°57'41.4"N 126°30'53.8"E	-	-	HOLDING 5 NM LEG
010	HM	NOVEN	-	009 (000.6)	-	R	+6 000 +5 000	-230	34°50'04.0"N 126°47'02.3"E	-	-	HOLDING 5 NM LEG

Change : New procedure.

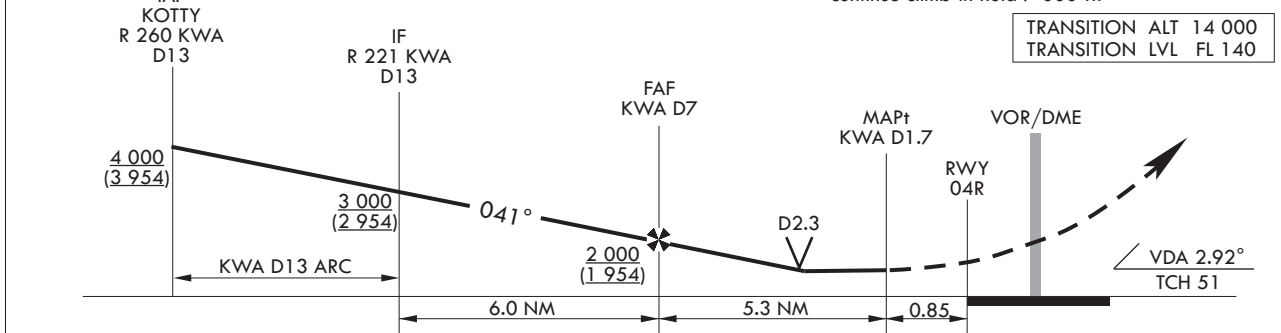
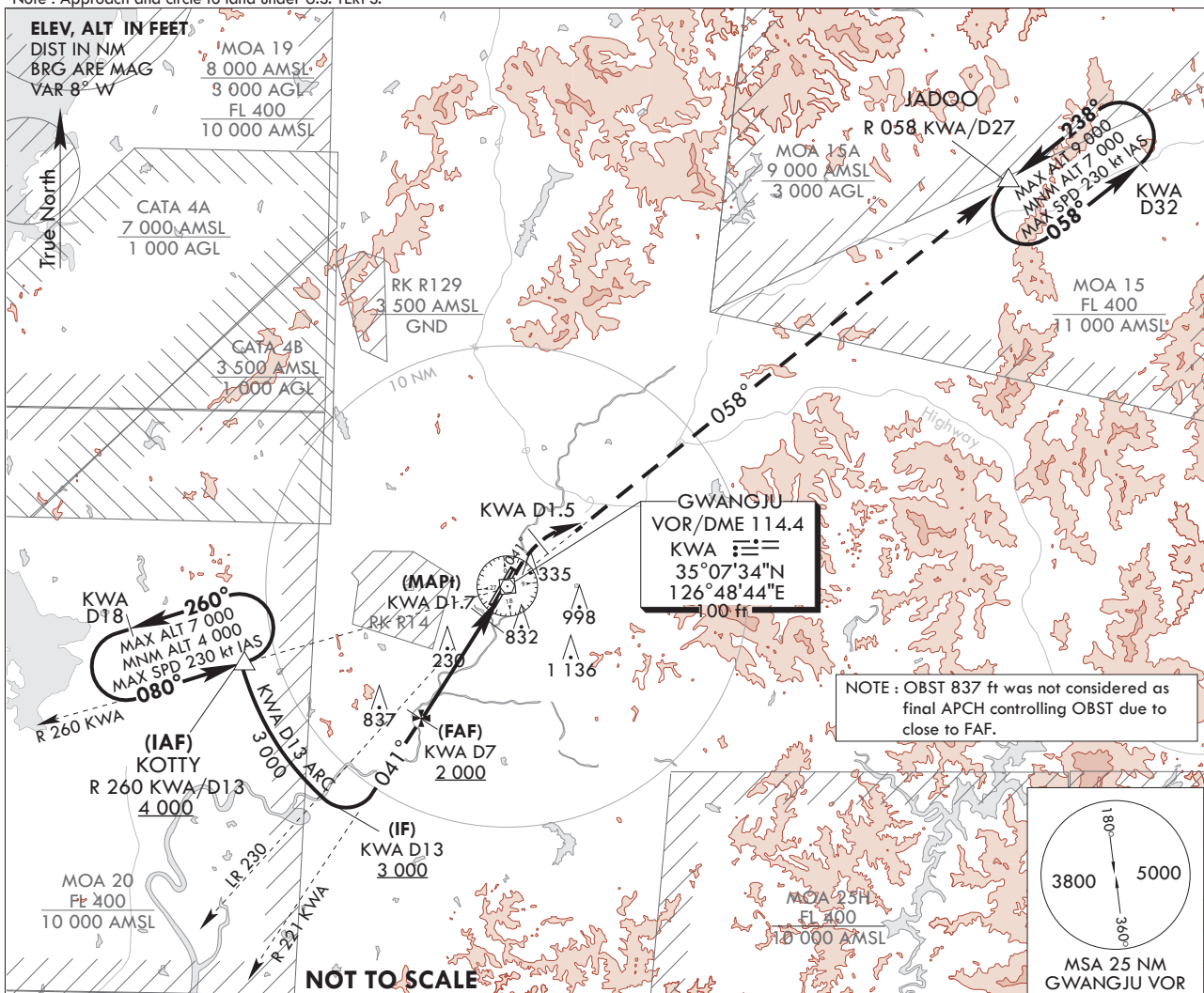
**INSTRUMENT
APPROACH
CHART**

AERODROME ELEV 48 ft
HEIGHTS RELATE TO
THR RWY 04R - ELEV 43 ft
HIGHEST ELEV TDZ 46 ft

GWANGJU APP 130.0
GWANGJU TWR 228.9
GWANGJU 118.05
254.6

**GWANGJU/Gwangju(RKJJ)
VOR/DME RWY 04R**

Note : Approach and circle to land under U.S. TERPS.



CATEGORY	A	B	C	D
S-VOR 04R	560/40 514(600-3/4)		560/55 514(600-1)	
S-VOR 04R (ALS INOP)	560/55 514(600-1)		560-1 3/8 514(600-1 3/8)	
CIRCLING*	720-1 672(700-1)	1 140-1 1/2 1 092(1 100-1 1/2)	1 140-3 1 092(1 100-3)	1 380-3 1 332(1 400-3)

* Circling not authorized for west of RWY 04-22.

Change : Page control.

INTENTIONALLY

LEFT

BLANK

**INSTRUMENT
APPROACH
CHART**

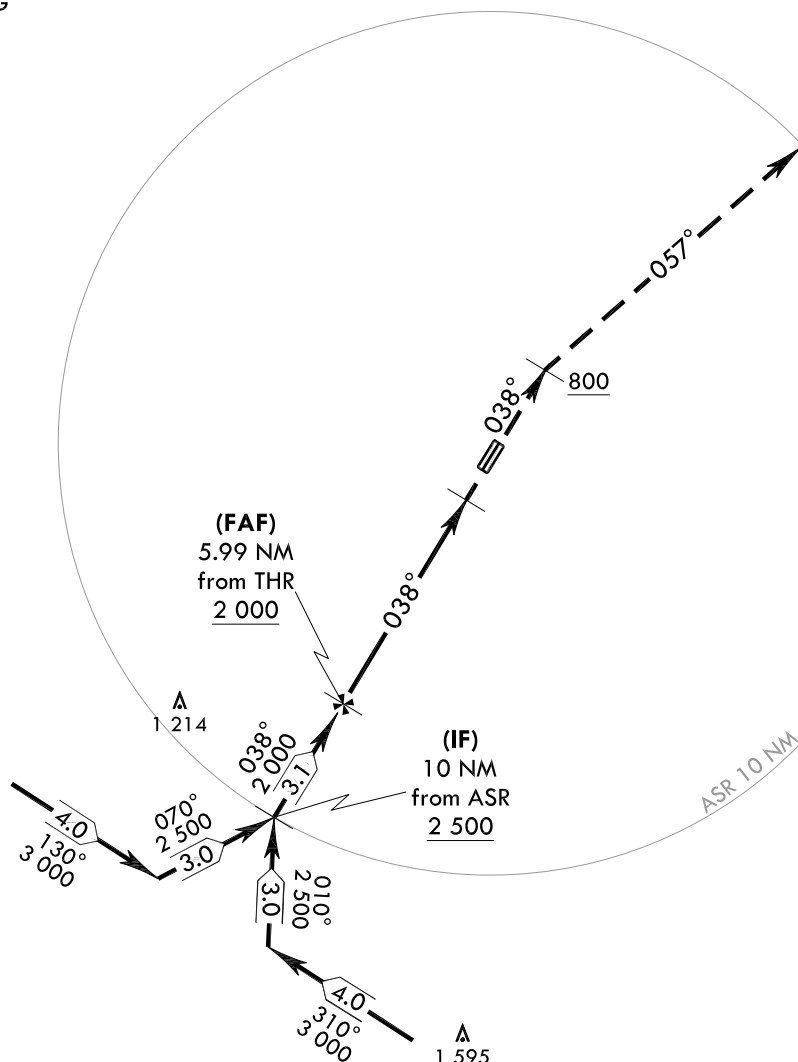
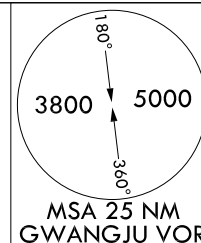
AERODROME ELEV 48 ft
HEIGHTS RELATED TO
THR RWY 04R - ELEV **43 ft**
HIGHEST ELEV TDZ **46 ft**

GWANGJU APP 130.0
228.9
GWANGJU TWR 118.05
254.6

GWANGJU/Gwangju(RKJJ)
PAR RWY 04R

Note : Approach and circle to land under U.S. TERPS.

ELEV, ALT IN FEET
DIST IN NM
BRG ARE MAG
VAR 8° W



NOT TO SCALE

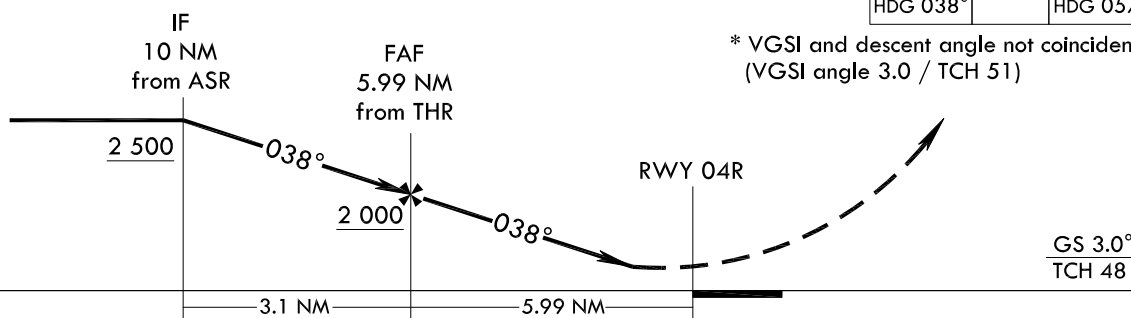
MISSED APPROACH

Climb HDG 038° to 800 ft, then climbing right turn HDG 057° maintain 5 000 ft and assigned HDG for radar vector.

TRANSITION ALT 14 000
TRANSITION LVL FL 140



* VGSI and descent angle not coincident.
(VGSI angle 3.0 / TCH 51)



CATEGORY	A	B	C	D	E
S-PAR 04R		246/24	200(200-1/2)		
S-PAR 04R (ALS INOP)		246/40	200(200-3/4)		

* Circling not authorized.

Change : Page control.

OFFICE OF CIVIL AVIATION

AIRAC AIP AMDT 1/23
Effective : 1600UTC 22 FEB 2023

INTENTIONALLY

LEFT

BLANK

**INSTRUMENT
APPROACH
CHART**

AERODROME ELEV 48 ft
HEIGHTS RELATED TO
THR RWY 04R - ELEV **43 ft**
HIGHEST ELEV TDZ **46 ft**

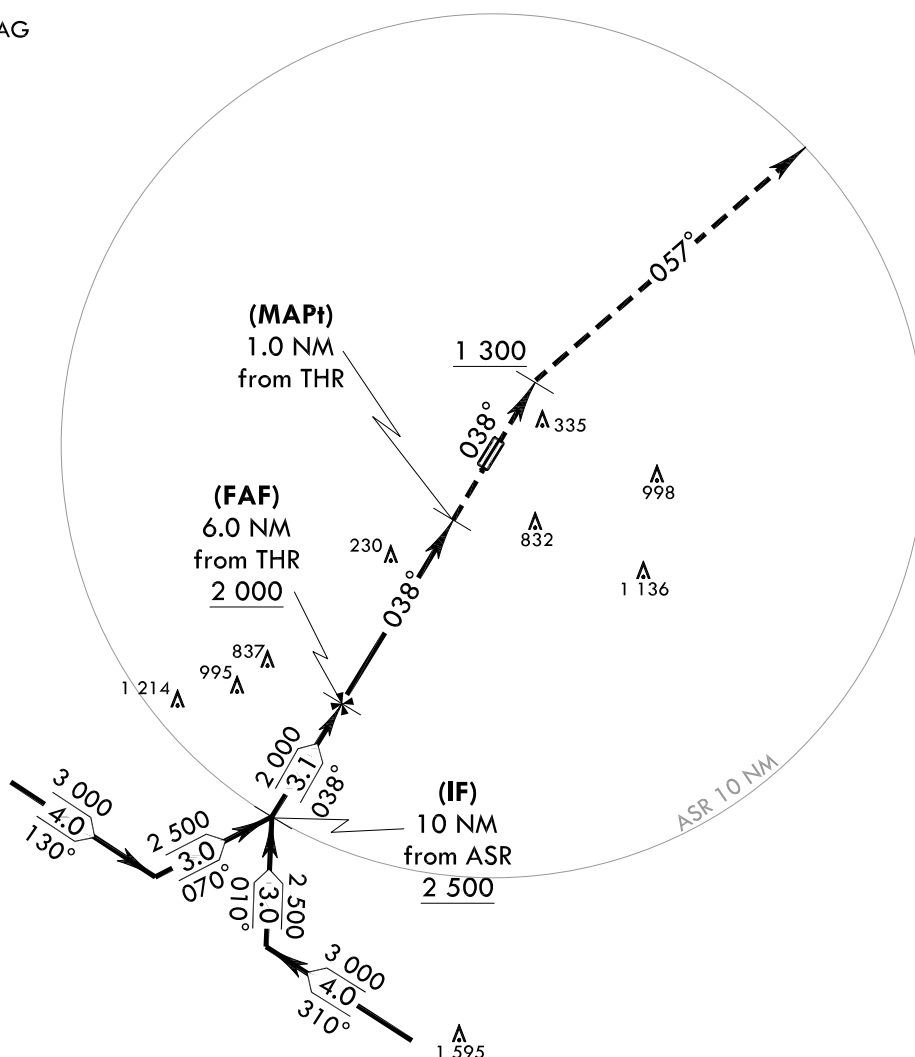
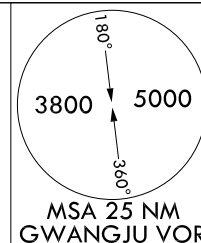
GWANGJU APP 130.0
228.9
GWANGJU TWR 118.05
254.6

GWANGJU/Gwangju(RKJJ)
ASR RWY 04R

Note : Approach and circle to land under U.S. TERPS.

ELEV, ALT IN FEET

DIST IN NM
BRG ARE MAG
VAR 8° W



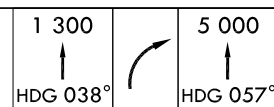
NOTE :
OBST 837 ft was not considered as final APCH controlling OBST due to close to FAF.

NOT TO SCALE

MISSED APPROACH

Climb HDG 038° to 1 300 ft, then climbing right turn HDG 057° maintain 5 000 ft and assigned HDG for radar vector.

TRANSITION ALT 14 000
TRANSITION LVL FL 140



	IF 10 NM from ASR 2 500		FAF 6.0 NM from THR 2 000		MAPt 1.0 NM from THR 1 300		RWY 04R	
	038°		038°		038°		VDA 2.99° TCH 51	
	3.1 NM		5.0 NM		1.0			
CATEGORY	A		B		C		D	
S-ASR 04R	560/40		514(600-3/4)		560/55		514(600-1)	
S-ASR 04R (ALS INOP)	560/60		514(600-1 1/4)		560-1 3/8		514(600-1 3/8)	
CIRCLING*	720-1 1/4 672(700-1 1/4)		1 140-1 1/2 1 092(1 100-1 1/2)		1 140-3 1 092(1 100-3)		1 380-3 1 332(1 400-3)	
							1 460-3 1 412(1 500-3)	

* Circling not authorized for west of RWY 04-22.

Change : Page control.

OFFICE OF CIVIL AVIATION

AIRAC AIP AMDT 1/23
Effective : 1600UTC 22 FEB 2023

INTENTIONALLY

LEFT

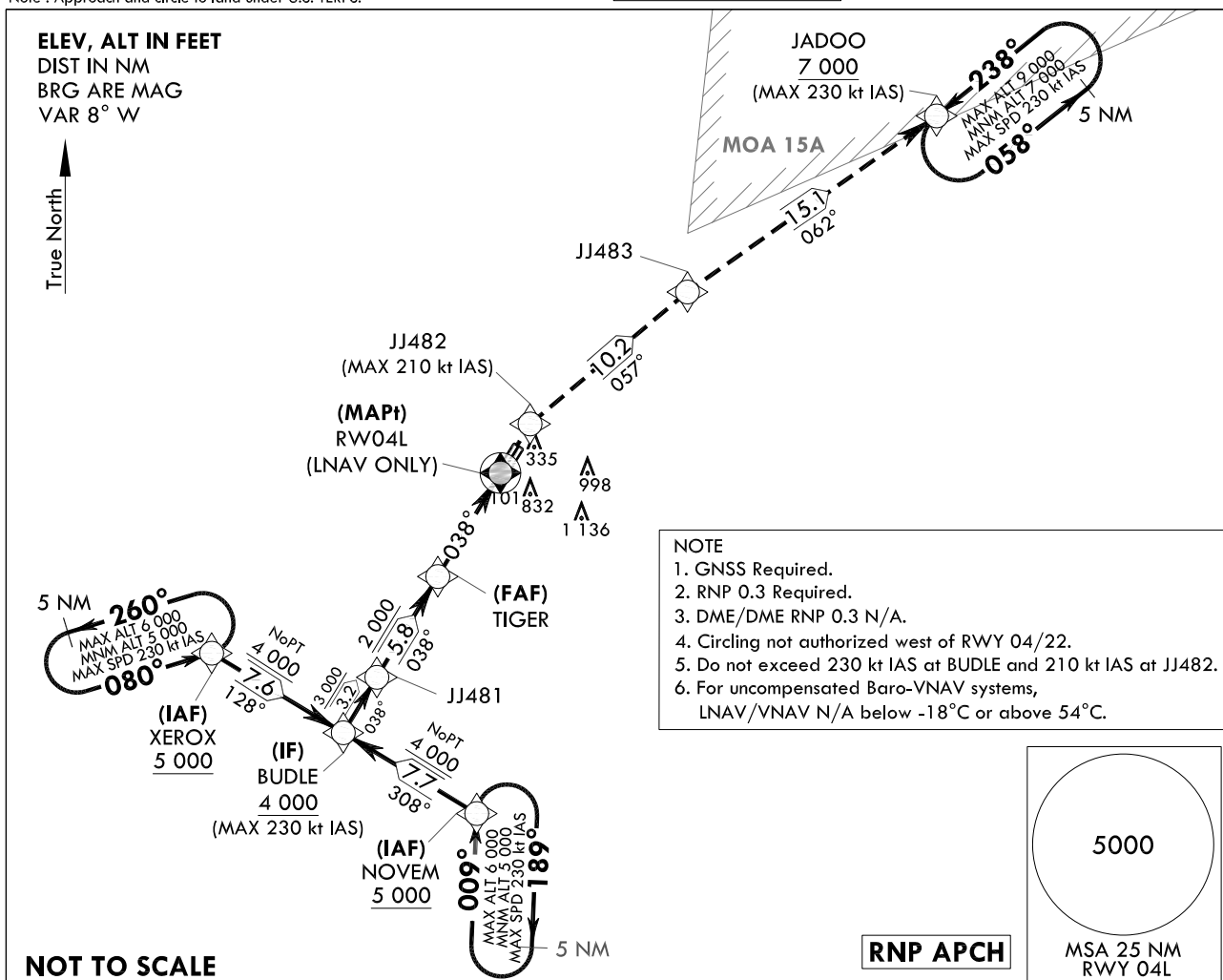
BLANK





AERODROME ELEV 48 ft
HEIGHTS RELATED TO
THR RWY 04L - ELEV **44 ft**
HIGHEST ELEV TDZ **46 ft**

Note : Approach and circle to land under U.S. TERPS.

GWANGJU APP	130.0
	228.9
GWANGJU TWR	118.05
	254.6

GWANGJU/Gwangju(RKJJ)
RNP RWY 04L



7 000	JJ482	TR	JJ483	TR	JAD00
		057°		062°	
					7 000

MISSED APPROACH

Climb to 7 000 ft on direct to JJ482 and track 057° to JJ483 and track 062° to JAD00 and hold, continue climb-in-hold to 7 000 ft.

TRANSITION ALT 14 000
TRANSITION LVL FL 140

(IAF) XEROX NOVEN
5 000
128°
308°
4 000
038°
3 000
038°
2 000
038°
1.33 NM to RW04L (LNAV ONLY)
GP 3.0° TCH 52

(IF) BUDLE JJ481 (FAF) TIGER (MAPt) RW04L (LNAV ONLY)

3.2 NM 5.8 NM 5.98 NM

CATEGORY		A	B	C	D
LNAV/VNAV DA	ALS	319/24 273(300-1/2)			
	ALS INOP	319/45 273(300-7/8)			
LNAV MDA	ALS	520/50 474(500-1)			
	ALS INOP	520-1 3/8 474(500-1 3/8)			
CIRCLING		720-1 3/8 672(700-1 3/8)	1 140-1 1/2 1 092(1 100-1 1/2)	1 140-3 1 092(1 100-3)	1 380-3 1 332(1 400-3)

Change : New procedure.

GWANGJU/Gwangju(RKJJ)
RNP RWY 04L

AERONAUTICAL DATA TABULATION

Instrument Approach Procedure Coding Tables

RNP RWY 04L via XEROX to BUDLE(IF)

Serial Number	Path Descriptor	Waypoint Identifier	Fly-over	Course/Track M(°T)	Distance (NM)	Turn direction	Altitude (ft)	Speed (kt)	Coordinates	VPA/ TCH	Navigation specification	Remarks
001	IF	XEROX	-	-	-	-	+5 000	-230	34°57'41.4"N 126°30'53.8"E	-	RNP APCH	IAF
002	TF	BUDLE	-	128 (119.8)	7.6	-	+4 000	-230	34°53'54.5"N 126°38'55.1"E	-	RNP APCH	IF NoPT

RNP RWY 04L via NOVEM to BUDLE(IF)

Serial Number	Path Descriptor	Waypoint Identifier	Fly-over	Course/Track M(°T)	Distance (NM)	Turn direction	Altitude (ft)	Speed (kt)	Coordinates	VPA/ TCH	Navigation specification	Remarks
001	IF	NOVEM	-	-	-	-	+5 000	-230	34°50'04.0"N 126°47'02.3"E	-	RNP APCH	IAF
002	TF	BUDLE	-	308 (299.9)	7.7	-	+4 000	-230	34°53'54.5"N 126°38'55.1"E	-	RNP APCH	IF NoPT

RNP RWY 04L - via BUDLE(IF) to MAHF

Serial Number	Path Descriptor	Waypoint Identifier	Fly-over	Course/Track M(°T)	Distance (NM)	Turn direction	Altitude (ft)	Speed (kt)	Coordinates	VPA/ TCH	Navigation specification	Remarks
001	TF	BUDLE	-	-	-	-	+4 000	-230	34°53'54.5"N 126°38'55.1"E	-	RNP APCH	IF
002	TF	JJ481	-	038 (029.8)	3.2	-	+3 000	-	34°56'41.3"N 126°40'51.3"E	-	RNP APCH	-
003	TF	TIGER	-	038 (029.9)	5.8	-	+2 000	-	35°01'44.8"N 126°44'23.0"E	-3.0/52	RNP APCH	FAF
004	TF	RW04L	Y	038 (029.9)	6.0	-	-	-	35°06'56.2"N 126°48'00.8"E	-	RNP APCH	MAPt LNAV ONLY
005	DF	JJ482	-	-	-	-	-	-210	35°09'23.8"N 126°49'44.2"E	-	RNP APCH	-
005	TF	JJ483	-	057 (048.7)	10.2	-	-	-	35°16'05.6"N 126°59'03.3"E	-	RNP APCH	-
006	TF	JADOO	-	062 (053.6)	15.1	-	+7 000	-230	35°25'02.6"N 127°13'54.1"E	-	RNP APCH	-
007	HM	JADOO	-	238 (229.6)	-	L	-9 000 +7 000	-230	35°25'02.6"N 127°13'54.1"E	-	-	HOLDING 5 NM LEG
008	HM	XEROX	-	080 (071.6)	-	L	-6 000 +5 000	-230	34°57'41.4"N 126°30'53.8"E	-	-	HOLDING 5 NM LEG
009	HM	NOVEM	-	009 (000.6)	-	R	-6 000 +5 000	-230	34°50'04.0"N 126°47'02.3"E	-	-	HOLDING 5 NM LEG

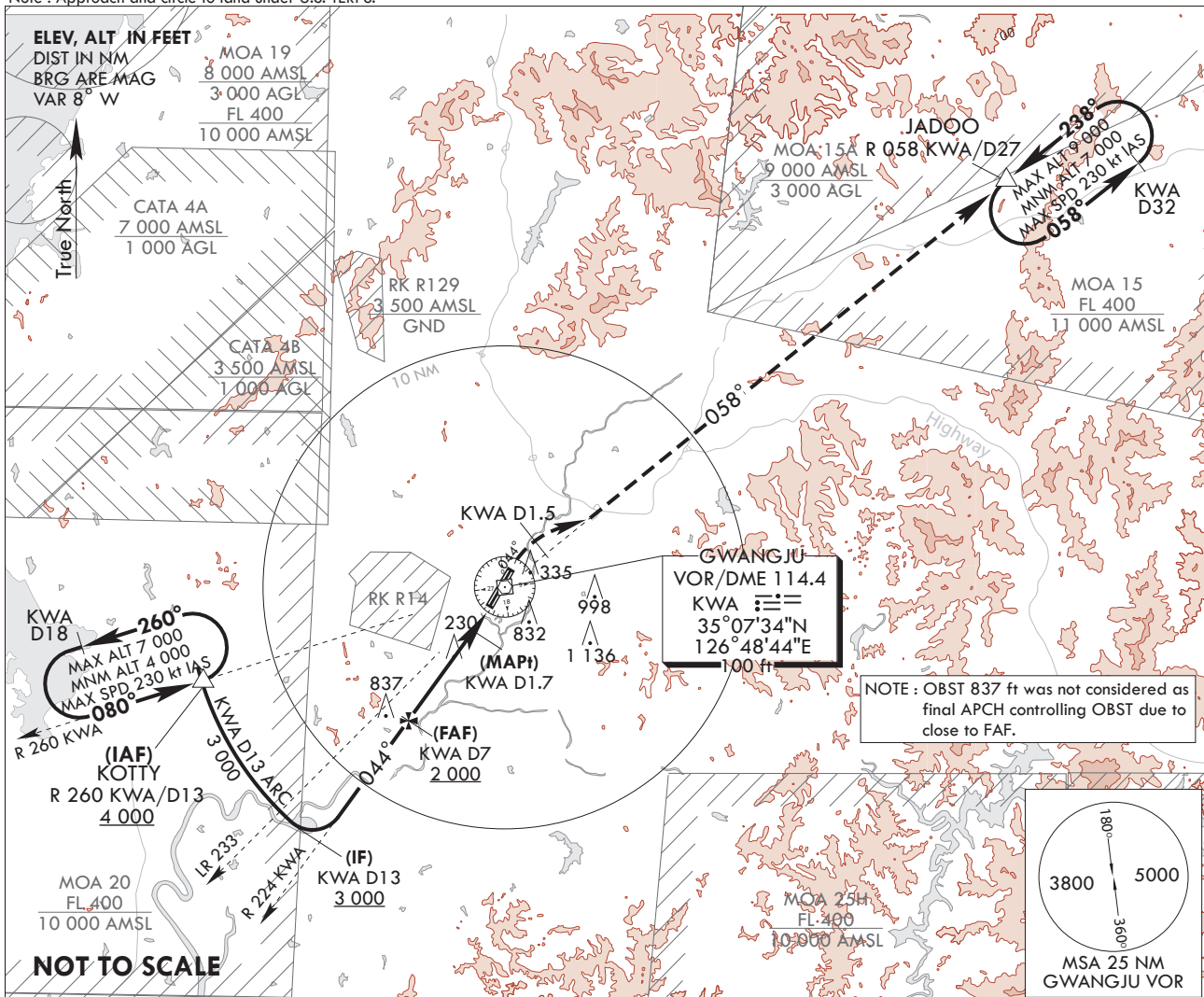
Change : New procedure.


AERODROME ELEV 48 ft
HEIGHTS RELATE TO
THR RWY 04L - ELEV **44 ft**
HIGHEST ELEV TDZ **46 ft**

GWANGJU APP	130.0
	228.9
GWANGJU TWR	118.05
	254.6

**GWANGJU/Gwangju(RKJJ)
VOR/DME RWY 04L**

Note : Approach and circle to land under U.S. TERPS.

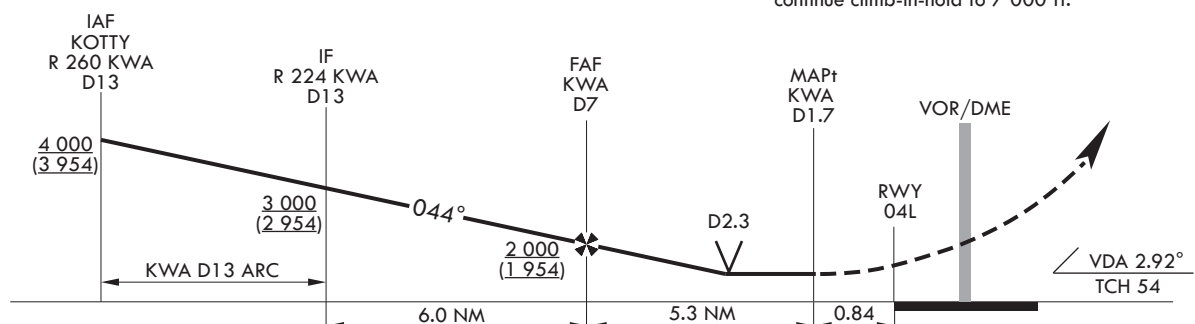



7 000 ↑ HDG 044°	 KWA D1.5	R 058 KWA	JADOO KWA D27
------------------------	--	--------------	------------------

TRANSITION	ALT	14 000
TRANSITION	LVL	FL 140

MISSED APPROACH

Climb to 7 000 ft on HDG 044° to KWA D1.5, and climbing right turn to intercept R 058 KWA and track on R 058 KWA to JADOO and hold, continue climb-in-hold to 7 000 ft.



CATEGORY	A	B	C	D
S-VOR 04L	560/40 514(600-3/4)		560/55 514(600-1)	
S-VOR 04L (ALS INOP)	560/55 514(600-1)		560-1 3/8 514(600-1 3/8)	
 CIRCLING*	720-1 672(700-1)	1 140-1 1/2 1 092(1 100-1 1/2)	1 140-3 1 092(1 100-3)	1 380-3 1 332(1 400-3)

*Circling not authorized for west of RWY 04-22.

Change : Page control.

INTENTIONALLY

LEFT

BLANK

**INSTRUMENT
APPROACH
CHART**

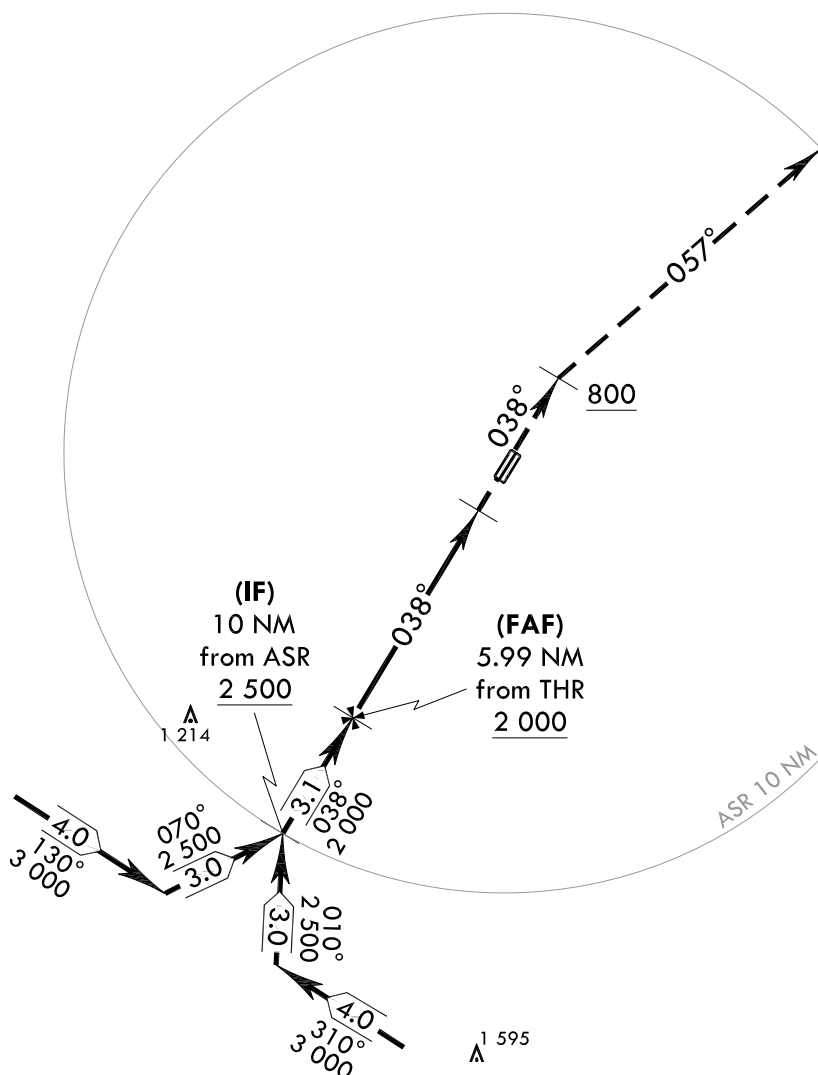
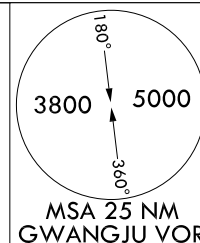
AERODROME ELEV 48 ft
HEIGHTS RELATED TO
THR RWY 04L - ELEV **44 ft**
HIGHEST ELEV TDZ **46 ft**

GWANGJU APP 130.0
228.9
GWANGJU TWR 118.05
254.6

GWANGJU/Gwangju(RKJJ)
PAR RWY 04L

Note : Approach and circle to land under U.S. TERPS.

ELEV, ALT IN FEET
DIST IN NM
BRG ARE MAG
VAR 8° W

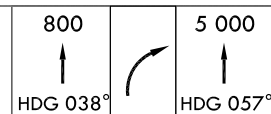


NOT TO SCALE

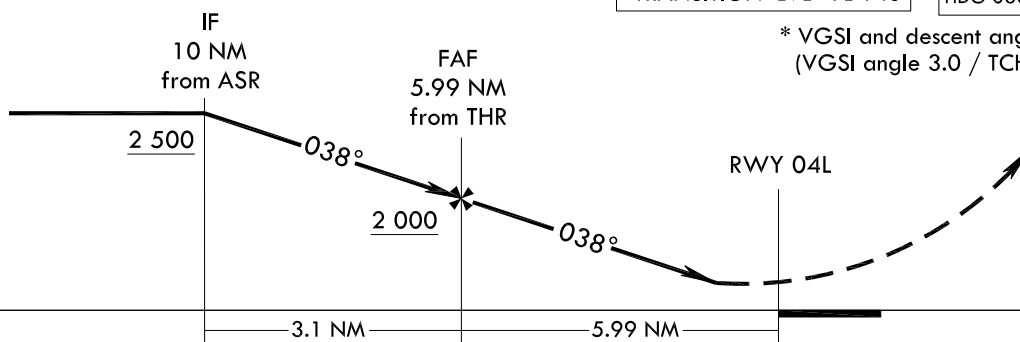
MISSED APPROACH

Climb HDG 038° to 800 ft, then climbing right turn HDG 057° maintain 5 000 ft and assigned HDG for radar vector.

TRANSITION ALT 14 000
TRANSITION LVL FL 140



* VGSi and descent angle not coincident.
(VGSi angle 3.0 / TCH 54)



CATEGORY	A	B	C	D	E
S-PAR 04L		246/24	200(200-1/2)		
S-PAR 04L (ALS INOP)		246/40	200(200-3/4)		

* Circling not authorized.

Change : Page control.

INTENTIONALLY

LEFT

BLANK

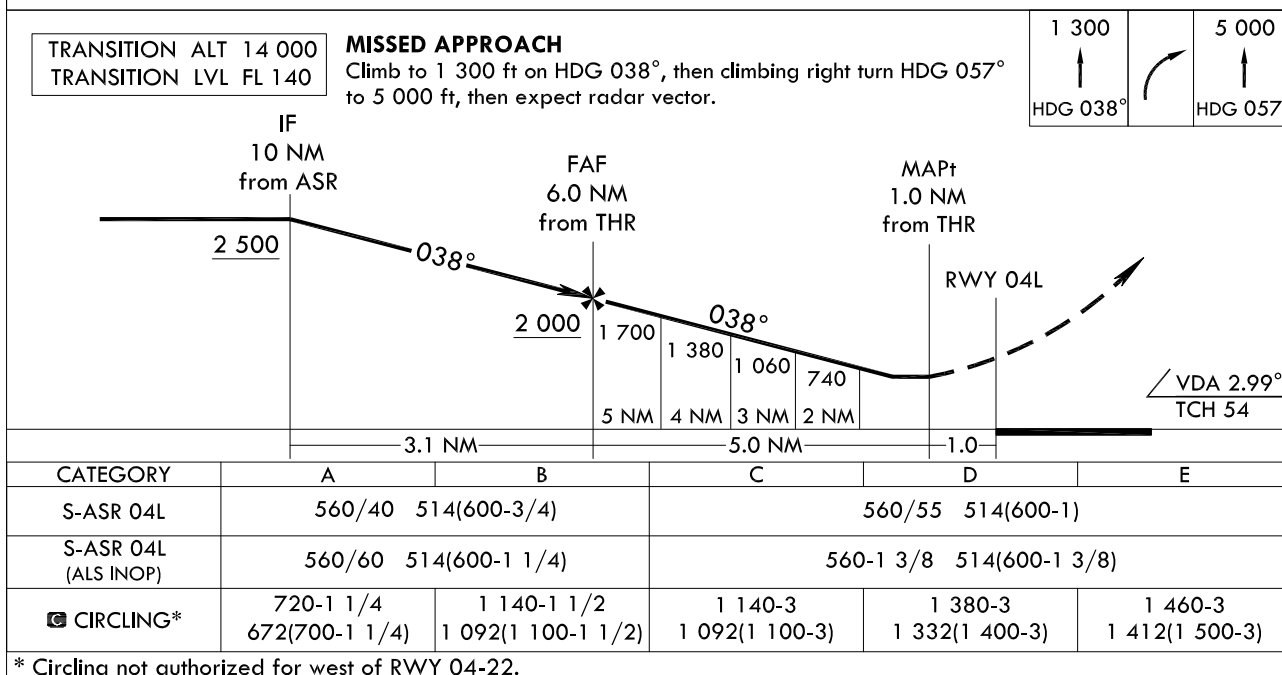
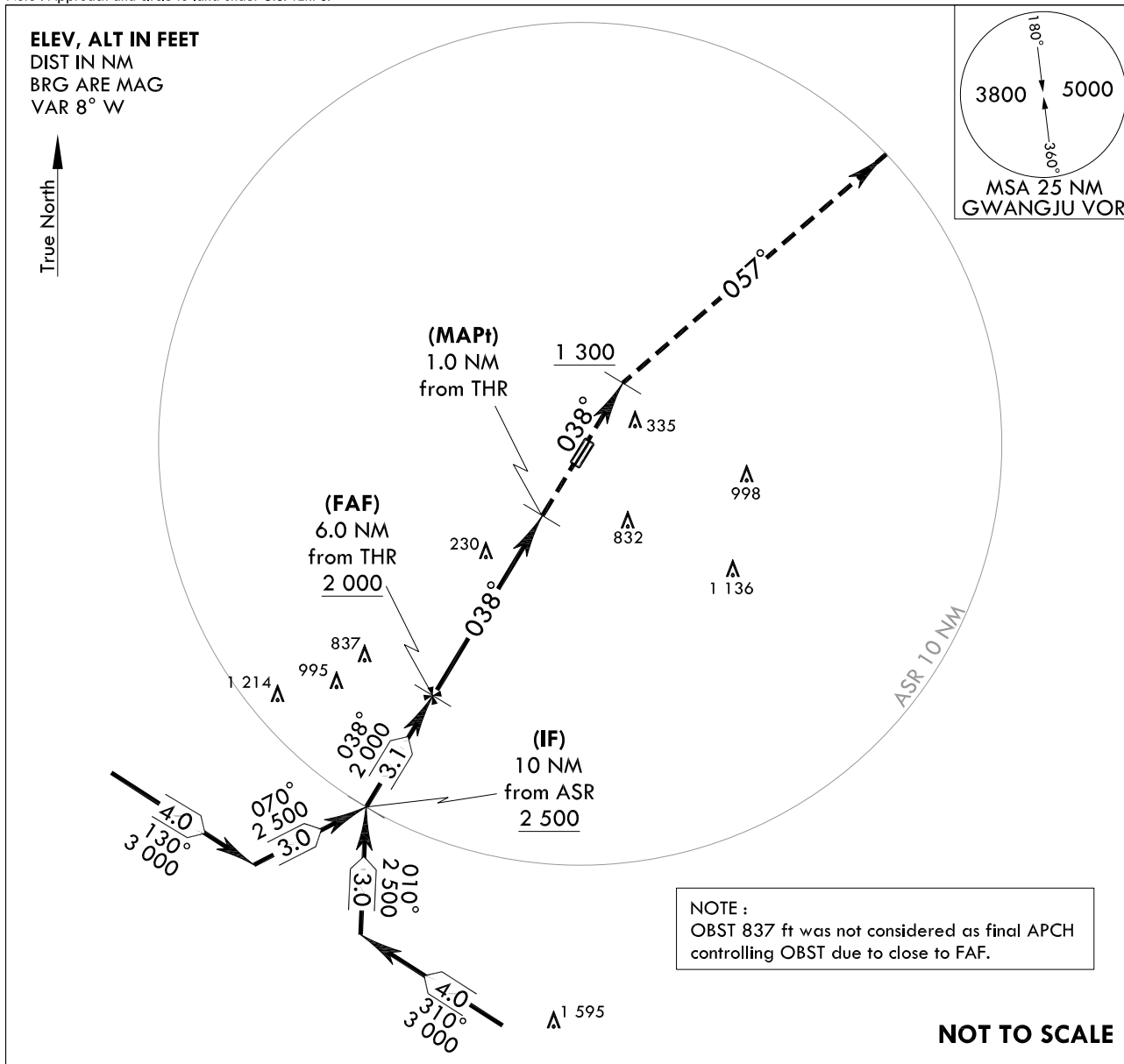
**INSTRUMENT
APPROACH
CHART**

AERODROME ELEV 48 ft
HEIGHTS RELATED TO
THR RWY 04L - ELEV **44 ft**
HIGHEST ELEV TDZ **46 ft**

GWANGJU APP 130.0
228.9
GWANGJU TWR 118.05
254.6

GWANGJU/Gwangju(RKJJ)
ASR RWY 04L

Note : Approach and circle to land under U.S. TERPS.



* Circling not authorized for west of RWY 04-22.

Change : Page control.

OFFICE OF CIVIL AVIATION

AIRAC AIP AMDT 1/23
Effective : 1600UTC 22 FEB 2023

INTENTIONALLY

LEFT

BLANK

**INSTRUMENT
APPROACH
CHART**

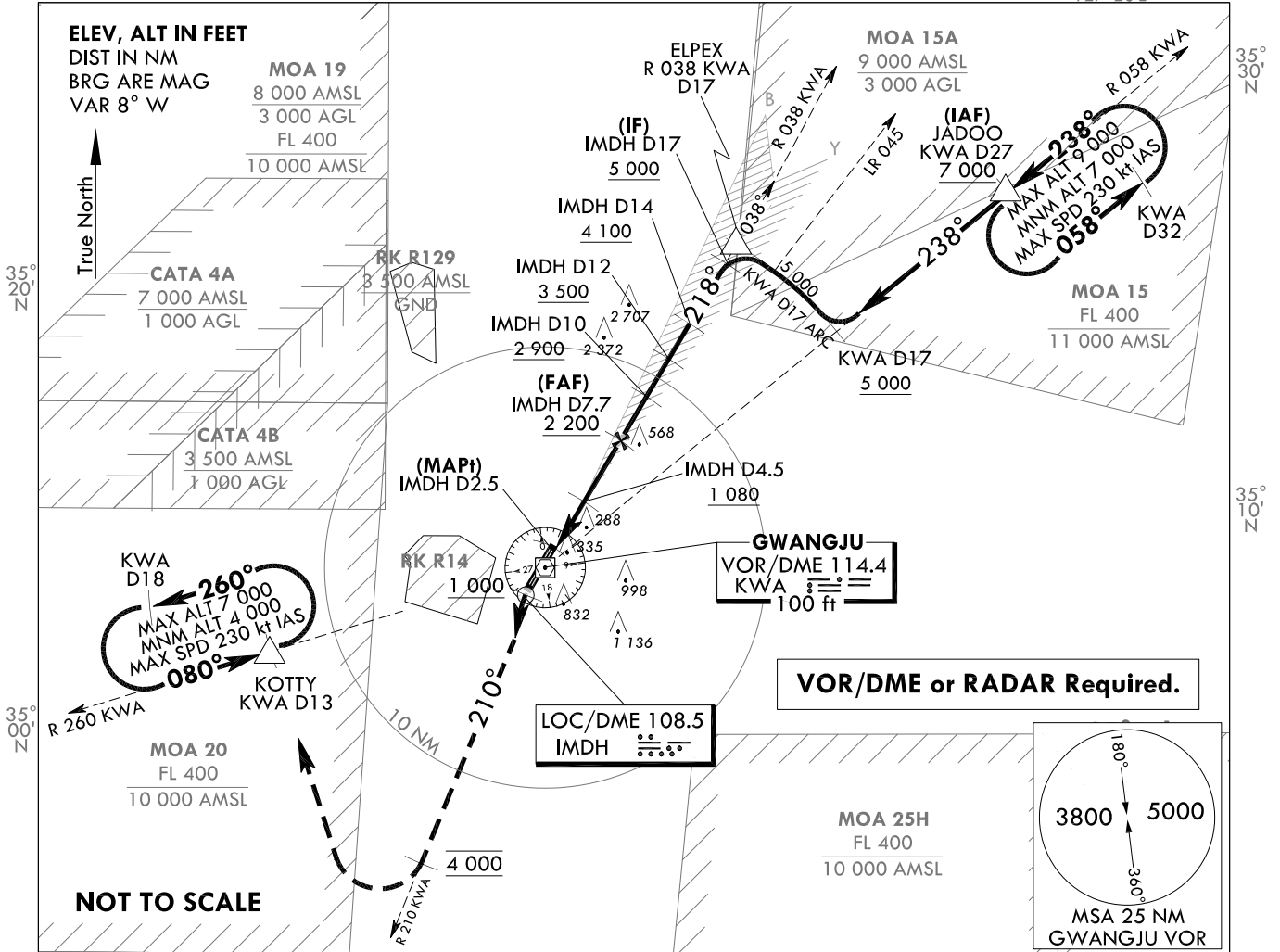
AERODROME ELEV 48 ft
HEIGHTS RELATED TO
THR RWY 22L - ELEV 46 ft
HIGHEST ELEV TDZ 48 ft

GWANGJU APP 130.0
228.9
GWANGJU TWR 118.05
254.6

GWANGJU/Gwangju(RKJJ)
LOC/DME RWY 22L

Note : Approach and circle to land under U.S. TERPS.

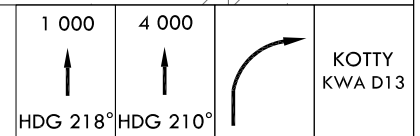
127°20'E



MISSED APPROACH

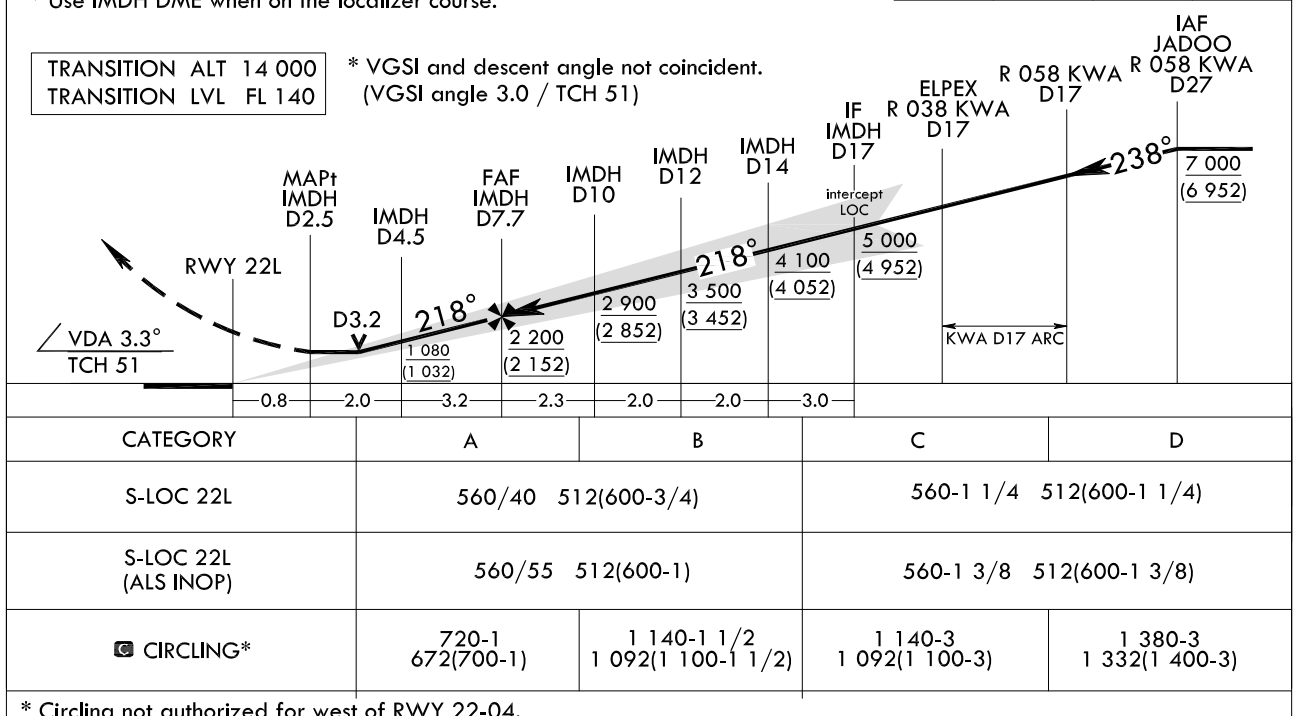
Climb to 1 000 ft on HDG 218°, then climbing left turn HDG 210° to 4 000 ft, then right turn direct to KOTTY and hold.

* Use IMDH DME when on the localizer course.



TRANSITION ALT 14 000
TRANSITION LVL FL 140

* VGSI and descent angle not coincident.
(VGSI angle 3.0 / TCH 51)



* Circling not authorized for west of RWY 22-04.

Change : Page control.

OFFICE OF CIVIL AVIATION

AIRAC AIP AMDT 1/23
Effective : 1600UTC 22 FEB 2023

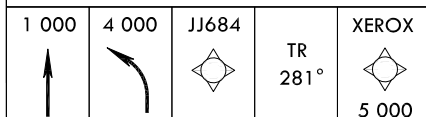
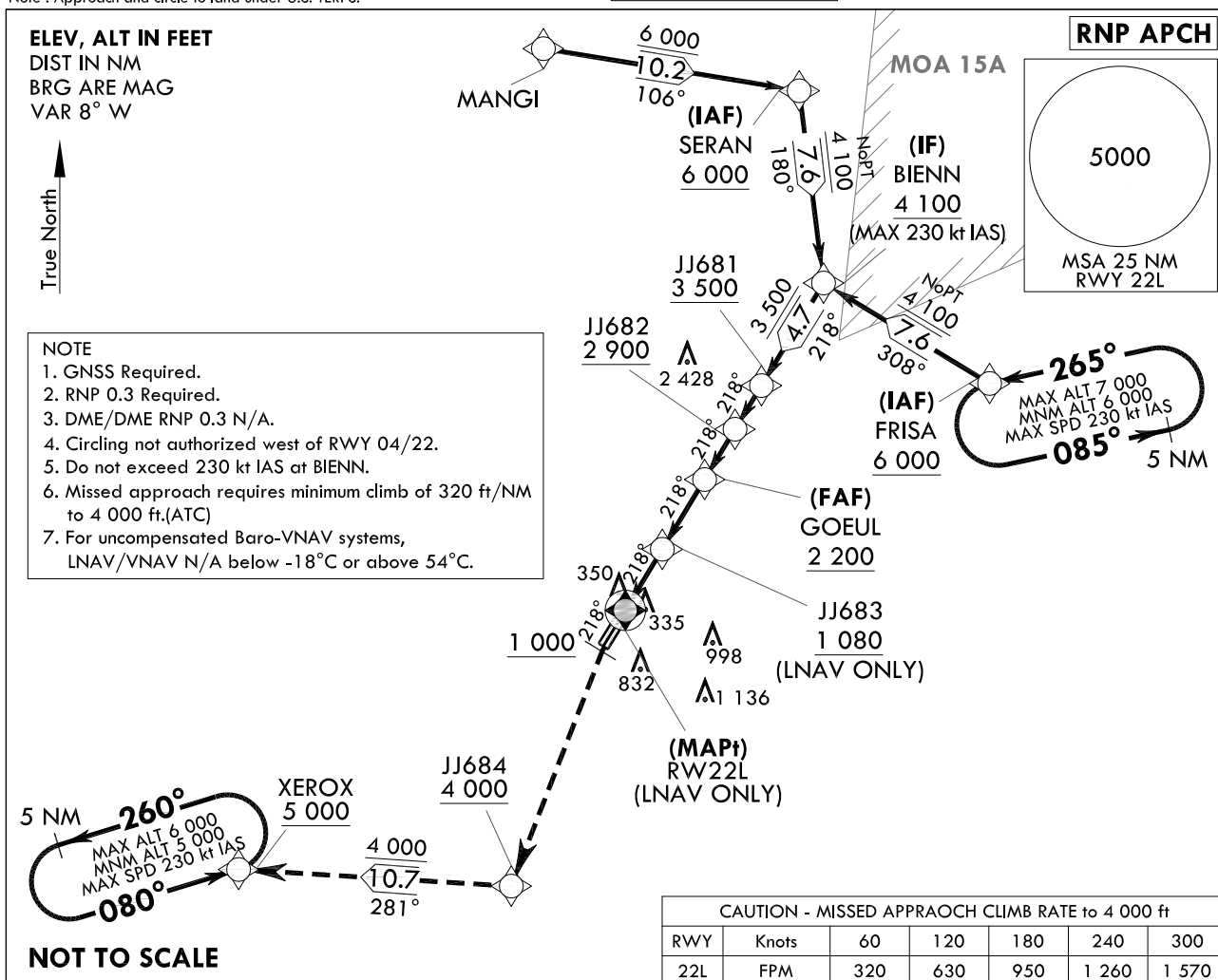
INTENTIONALLY

LEFT

BLANK

INSTRUMENT
APPROACH
CHARTAERODROME ELEV 48 ft
HEIGHTS RELATED TO
THR RWY 22L - ELEV 46 ft
HIGHEST ELEV TDZ 48 ftGWANGJU APP 130.0
228.9
GWANGJU TWR 118.05
254.6GWANGJU/Gwangju(RKJJ)
RNP RWY 22L

Note : Approach and circle to land under U.S. TERPS.

**MISSED APPROACH**

Climb HDG 218° to 1 000 ft, then climbing left turn direct to JJ684 at or above 4 000 ft, then track 281° to XEROX at or above 5 000 ft and hold.

* VGSi and descent angle not coincident (VGSi Angle 3.0/TCH 51).

TRANSITION ALT 14 000 TRANSITION LVL FL 140								
		(MAPt) RW22L (LNAV ONLY)	JJ683 (LNAV ONLY)	(FAF) GOEUL	JJ682	JJ681	(IF) BIENN	(IAF) SERAN FRISA
GP 3.3° TCH 52		1.8 NM to RW22L (LNAV ONLY)	1 080	218° 2 200	218° 2 900	218° 3 500	218° 4 100	180° 308° 6 000
		2.8 NM	3.2 NM	2.3 NM	2.0 NM	4.7 NM		
CATEGORY		A	B	C	D			
LNAV/VNAV DA	ALS	568-1 3/8		520(600-1 3/8)				
	ALS INOP	568-1 5/8		520(600-1 5/8)				
LNAV MDA	ALS	660-1 1/2		612(700-1 1/2)				
	ALS INOP	660-1 3/4		612(700-1 3/4)				
CIRCLING		720-1 3/4 672(700-1 3/4)	1 140-1 3/4 1 092(1 100-1 3/4)	1 140-3 1 092(1 100-3)	1 380-3 1 332(1 400-3)			

Change : New procedure.

OFFICE OF CIVIL AVIATION

AIRAC AIP AMDT 1/23
Effective : 1600UTC 22 FEB 2023

GWANGJU/Gwangju(RKJJ)
RNP RWY 22L

AERONAUTICAL DATA TABULATION

Instrument Approach Procedure Coding Tables

RNP RWY 22L via SERAN to BIENN(IF)

Serial Number	Path Descriptor	Waypoint Identifier	Fly-over	Course/Track M(°T)	Distance (NM)	Turn direction	Altitude (ft)	Speed (kt)	Coordinates	VPA/ TCH	Navigation specification	Remarks
001	IF	SERAN	-	-	-	-	+6 000	-230	35°28'45.5"N 126°56'50.7"E	-	RNP APCH	IAF
002	TF	BIENN	-	180 (171.6)	7.6	-	+4 100	-230	35°21'13.7"N 126°58'12.2"E	-	RNP APCH	IF NoPT

RNP RWY 22L via FRISA to BIENN(IF)

Serial Number	Path Descriptor	Waypoint Identifier	Fly-over	Course/Track M(°T)	Distance (NM)	Turn direction	Altitude (ft)	Speed (kt)	Coordinates	VPA/ TCH	Navigation specification	Remarks
001	IF	FRISA	-	-	-	-	+6 000	-230	35°17'25.0"N 127°06'14.5"E	-	RNP APCH	IAF
002	TF	BIENN	-	308 (300.1)	7.6	-	+4 100	-230	35°21'13.7"N 126°58'12.2"E	-	RNP APCH	IF NoPT

RNP RWY 22L - via BIENN(IF) to MAHF

Serial Number	Path Descriptor	Waypoint Identifier	Fly-over	Course/Track M(°T)	Distance (NM)	Turn direction	Altitude (ft)	Speed (kt)	Coordinates	VPA/ TCH	Navigation specification	Remarks
001	TF	BIENN	-	-	-	-	+4 100	-230	35°21'13.7"N 126°58'12.2"E	-	RNP APCH	IF
002	TF	JJ681	-	218 (210.0)	4.7	-	+3 500	-	35°17'09.1"N 126°55'19.9"E	-	RNP APCH	-
003	TF	JJ682	-	218 (210.0)	2.0	-	+2 900	-	35°15'25.0"N 126°54'06.6"E	-	RNP APCH	-
004	TF	GOEUL	-	218 (210.0)	2.3	-	+2 200	-	35°13'25.3"N 126°52'42.5"E	-3.3/52	RNP APCH	FAF
005	TF	JJ683	-	218 (210.0)	3.2	-	+1 080	-	35°10'38.6"N 126°50'45.5"E	-	RNP APCH	LNAV ONLY
006	TF	RW22L	Y	218 (209.9)	2.8	-	-	-	35°08'12.8"N 126°49'03.3"E	-	RNP APCH	MAPt LNAV ONLY
007	VA	1 000 ft	-	-	-	-	+1 000	-	-	-	RNP APCH	-
008	DF	JJ684	-	-	-	-	-	-	34°57'17.9"N 126°43'53.3"E	-	RNP APCH	CG 320 ft/NM to 4 000 ft
009	TF	XEROX	-	281 (272.2)	10.7	-	+4 000	-	34°57'41.4"N 126°30'53.8"E	-	RNP APCH	-
010	HM	XEROX	-	080 (071.6)	-	L	-6 000 +5 000	-230	34°57'41.4"N 126°30'53.8"E	-	-	HOLDING 5 NM LEG
011	HM	FRISA	-	265 (256.6)	-	L	-7 000 +6 000	-230	35°17'25.0"N 127°06'14.5"E	-	-	HOLDING 5 NM LEG

Change : New procedure.

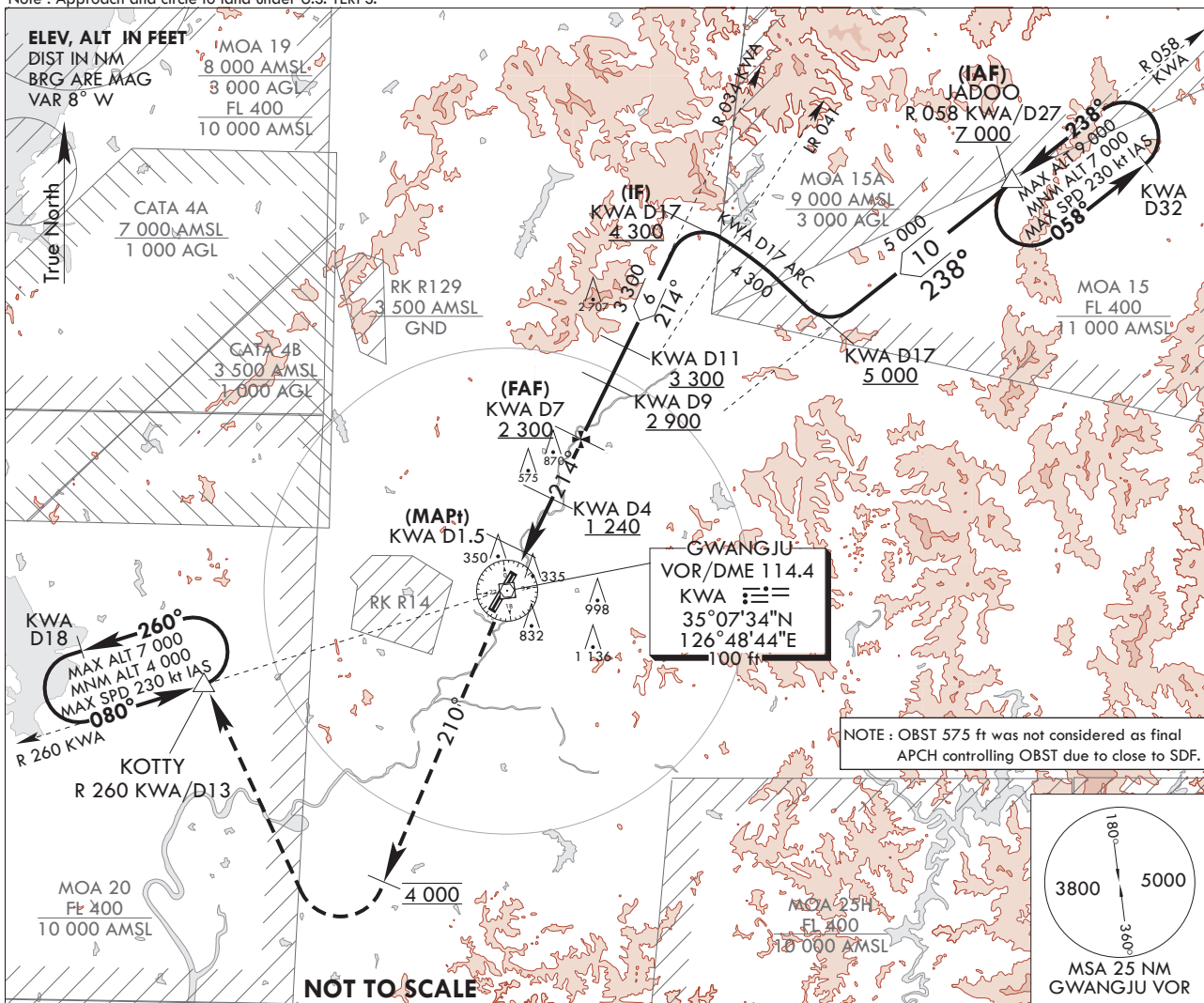
**INSTRUMENT
APPROACH
CHART**

AERODROME ELEV 48 ft
HEIGHTS RELATE TO
THR RWY 22L - ELEV 46 ft
HIGHEST ELEV TDZ 48 ft

GWANGJU APP 130.0
228.9
GWANGJU TWR 118.05
254.6

GWANGJU/Gwangju(RKJJ)
VOR/DME RWY 22L

Note : Approach and circle to land under U.S. TERPS.



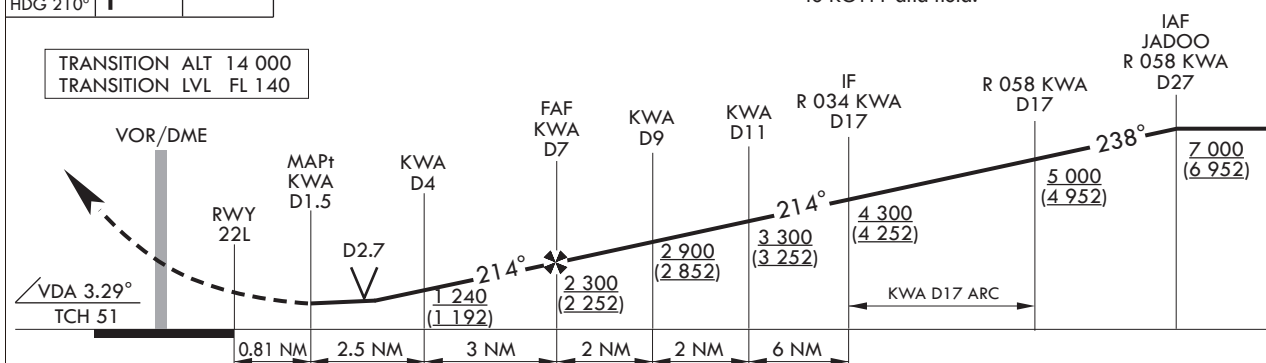
4 000
↑
HDG 210°

* VGSI and descent angle not coincident
(VGSI angle 3.0/TCH 51).

MISSED APPROACH

Climb to 4 000 ft on HDG 210°, then right turn direct to KOTTY and hold.

TRANSITION ALT 14 000
TRANSITION LVL FL 140



CATEGORY	A	B	C	D
S-VOR 22L	740/40 692(700-3/4)		740-1 3/4 692(700-1 3/4)	
S-VOR 22L (ALS INOP)	740/55 692(700-1)		740-2 692(700-2)	
CIRCLING*	740-1 692(700-1)	1 140-1 1/2 1 092(1 100-1 1/2)	1 140-3 1 092(1 100-3)	1 380-3 1 332(1 400-3)

* Circling not authorized for west of RWY 22-04.

Change : Page control.

INTENTIONALLY

LEFT

BLANK

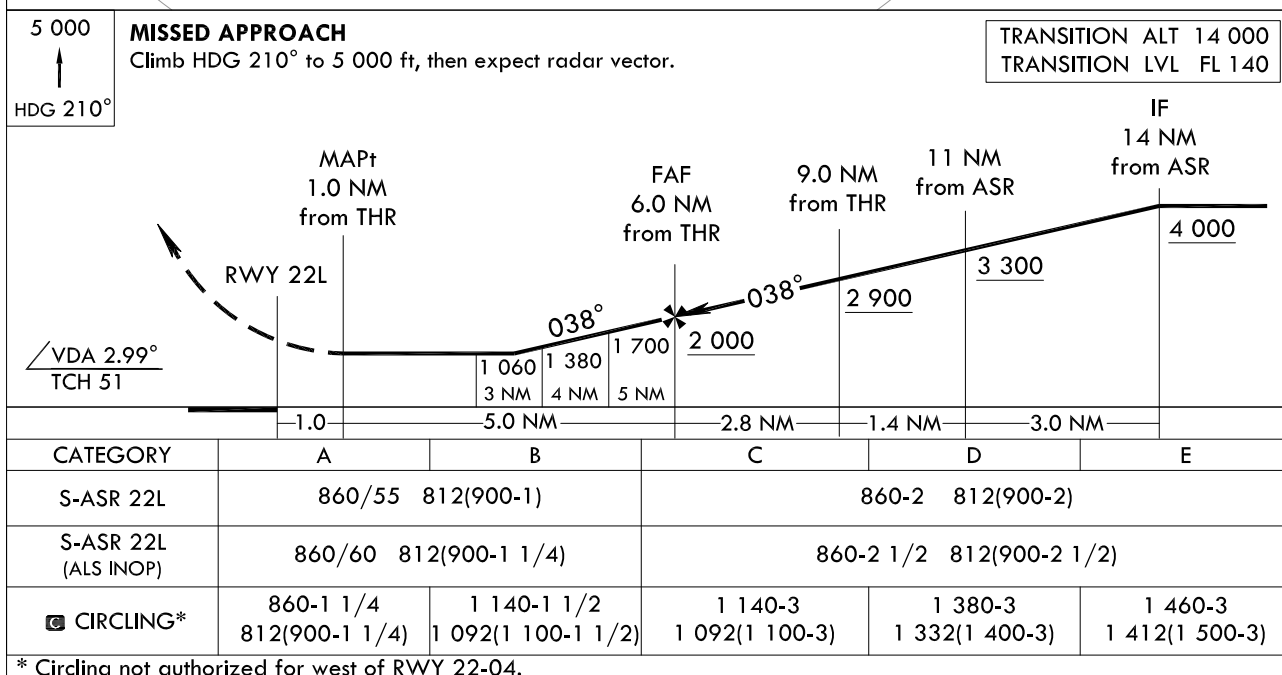
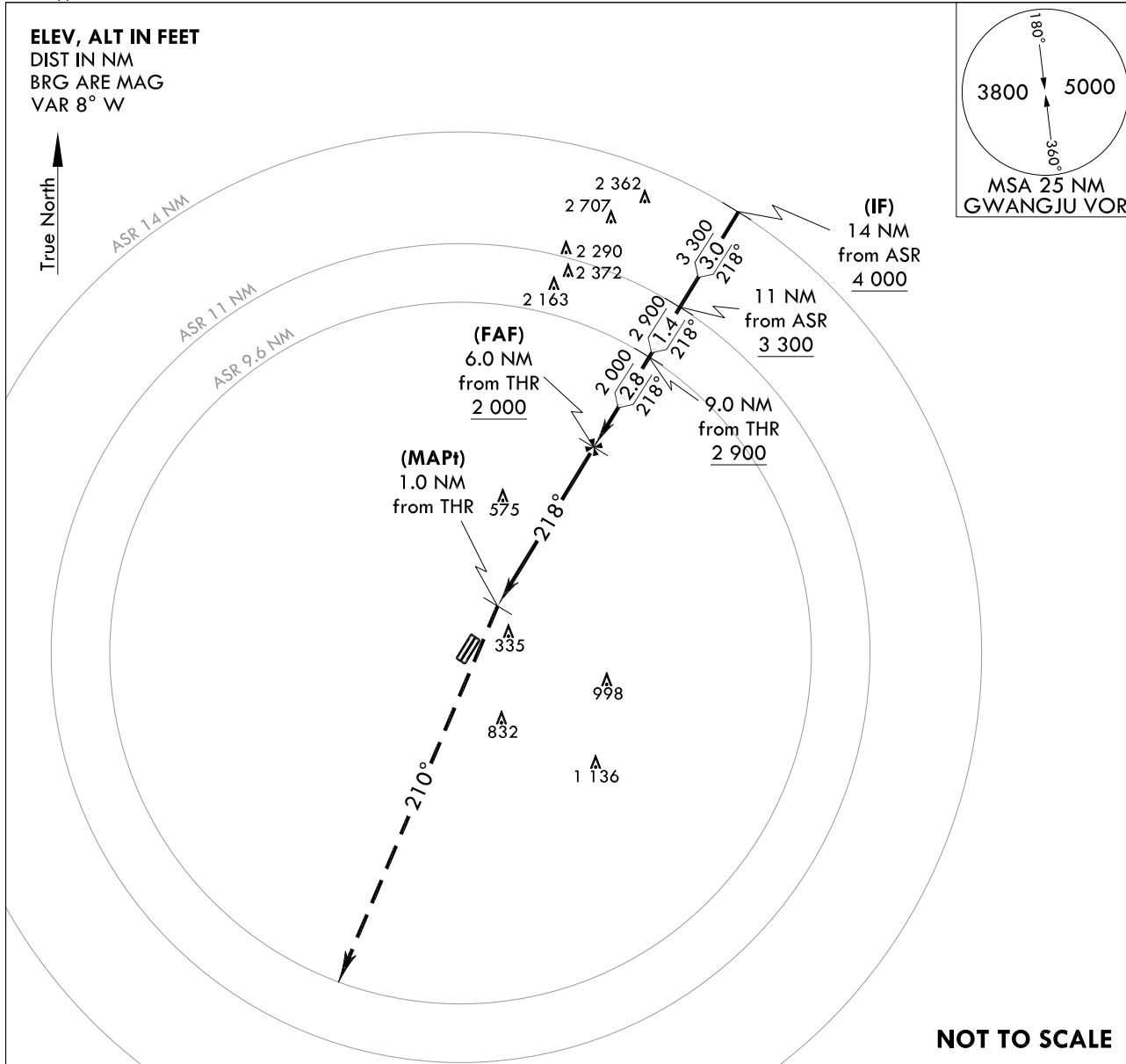
**INSTRUMENT
APPROACH
CHART**

AERODROME ELEV 48 ft
HEIGHTS RELATED TO
THR RWY 22L - ELEV **46 ft**
HIGHEST ELEV TDZ **48 ft**

GWANGJU APP 130.0
228.9
GWANGJU TWR 118.05
254.6

GWANGJU/Gwangju(RKJJ)
ASR RWY 22L

Note : Approach and circle to land under U.S. TERPS.



Change : Page control.

INTENTIONALLY

LEFT

BLANK

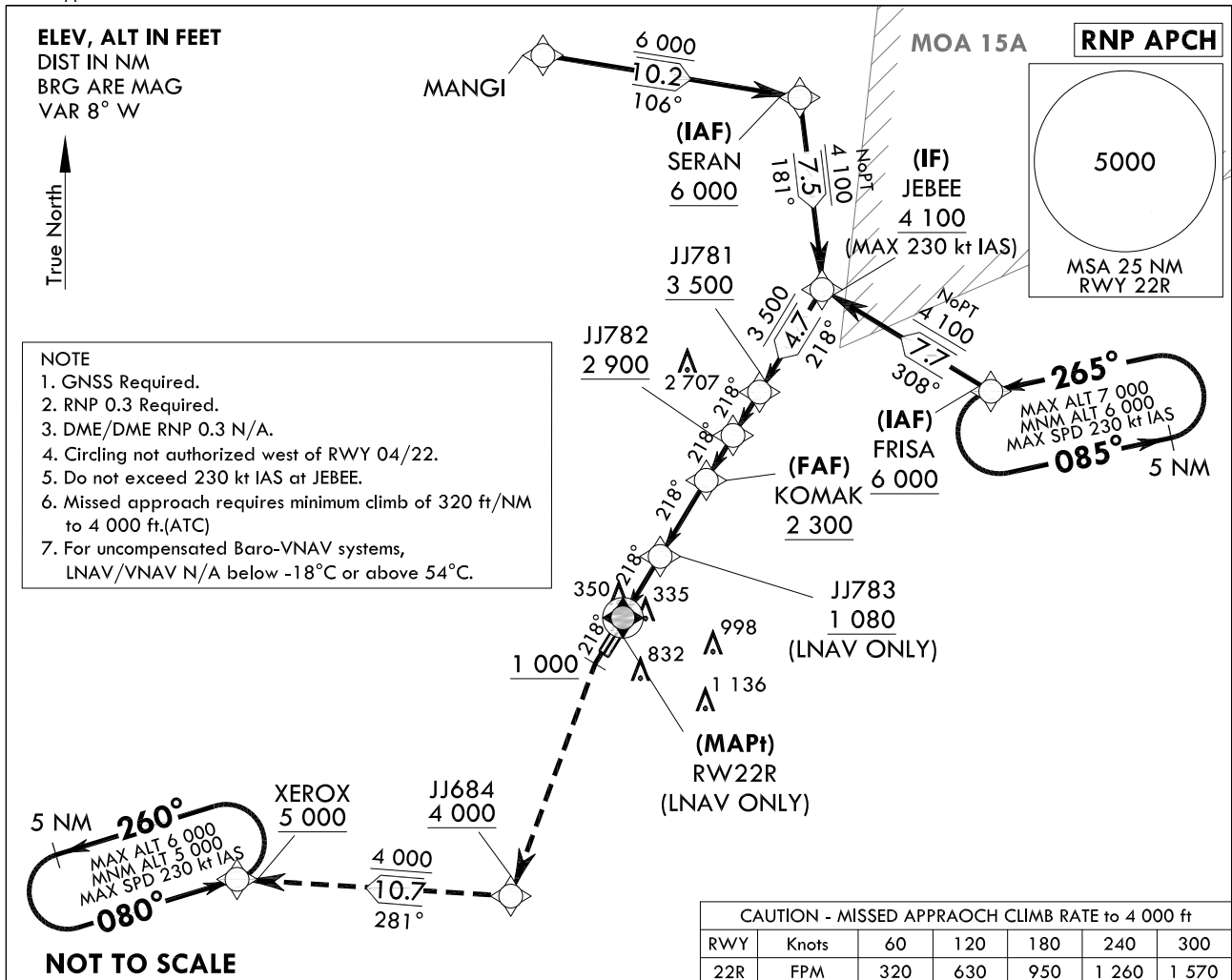
**INSTRUMENT
APPROACH
CHART**

AERODROME ELEV 48 ft
HEIGHTS RELATED TO
THR RWY 22R - ELEV 48 ft
HIGHEST ELEV TDZ 48 ft

GWANGJU APP 130.0
228.9
GWANGJU TWR 118.05
254.6

GWANGJU/Gwangju(RKJJ)
RNP RWY 22R

Note : Approach and circle to land under U.S. TERPS.



1 000	4 000	JJ684	TR 281°	XEROX 5 000
-------	-------	-------	------------	----------------

MISSED APPROACH
Climb HDG 218° to 1 000 ft, then climbing left turn direct to JJ684 at or above 4 000 ft, then track 281° to XEROX at or above 5 000 ft and hold.
* VGSI and descent angle not coincident (VGSI Angle 3.0/TCH 53).

TRANSITION ALT 14 000 TRANSITION LVL FL 140					
		(MAPt) RW22R (LNAV ONLY)	JJ783 (LNAV ONLY)	(FAF) KOMAK	JJ782
		1.8 NM to RW22R (LNAV ONLY)	218°	218°	218°
		GP 3.3° TCH 52	1 080	2 300	2 900
		2.8 NM	3.48 NM	2.0 NM	2.0 NM
				JJ781	JEBEE
				3 500	4 100
					(IF) SERAN FRISA
					6 000
					180°
					308°
CATEGORY		A	B	C	D
LNAV/VNAV DA	ALS	568-1 3/8 520(600-1 3/8)			
	ALS INOP	568-1 5/8 520(600-1 5/8)			
LNAV MDA	ALS	660-1 1/2 612(700-1 1/2)			
	ALS INOP	660-1 3/4 612(700-1 3/4)			
CIRCLING		720-1 3/4 672(700-1 3/4)	1 140-1 3/4 1 092(1 100-1 3/4)	1 140-3 1 092(1 100-3)	1 380-3 1 332(1 400-3)

Change : New procedure.

AERONAUTICAL DATA TABULATION

Instrument Approach Procedure Coding Tables

RNP RWY 22R via SERAN to JEBEE(IF)

Serial Number	Path Descriptor	Waypoint Identifier	Fly-over	Course/Track M(T)	Distance (NM)	Turn direction	Altitude (ft)	Speed (kt)	Coordinates	VPA/ TCH	Navigation specification	Remarks
001	IF	SERAN	-	-	-	-	+6 000	-230	35°28'45.5"N 126°56'50.7"E	-	RNP APCH	IAF
002	TF	JEBEE	-	181 (172.2)	7.5	-	+4 100	-230	35°21'16.8"N 126°58'05.5"E	-	RNP APCH	IF NoPT

RNP RWY 22R via FRISA to JEBEE(IF)

Serial Number	Path Descriptor	Waypoint Identifier	Fly-over	Course/Track M(T)	Distance (NM)	Turn direction	Altitude (ft)	Speed (kt)	Coordinates	VPA/ TCH	Navigation specification	Remarks
001	IF	FRISA	-	-	-	-	+6 000	-230	35°17'25.0"N 127°06'14.5"E	-	RNP APCH	IAF
002	TF	JEBEE	-	308 (300.1)	7.7	-	+4 100	-230	35°21'16.8"N 126°58'05.5"E	-	RNP APCH	IF NoPT

RNP RWY 22R - via JEBEE(IF) to MAHF

Serial Number	Path Descriptor	Waypoint Identifier	Fly-over	Course/Track M(T)	Distance (NM)	Turn direction	Altitude (ft)	Speed (kt)	Coordinates	VPA/ TCH	Navigation specification	Remarks
001	TF	JEBEE	-	-	-	-	+4 100	-230	35°21'16.8"N 126°58'05.5"E	-	RNP APCH	IF
002	TF	JJ781	-	218 (210.0)	4.7	-	+3 500	-	35°17'12.3"N 126°55'13.2"E	-	RNP APCH	-
003	TF	JJ782	-	218 (210.0)	2.0	-	+2 900	-	35°15'28.1"N 126°54'00.0"E	-	RNP APCH	-
004	TF	KOMAK	-	218 (210.0)	2.0	-	+2 300	-	35°13'42.9"N 126°52'46.0"E	-3.3/52	RNP APCH	FAF
005	TF	JJ783	-	218 (210.0)	3.5	-	+1 080	-	35°10'41.8"N 126°50'38.9"E	-	RNP APCH	LNAV ONLY
006	TF	RW22R	Y	218 (209.9)	2.8	-	-	-	35°08'15.9"N 126°48'56.6"E	-	RNP APCH	MAPt LNAV ONLY
007	VA	1 000 ft	-	-	-	-	+1 000	-	-	-	RNP APCH	-
008	DF	JJ684	-	-	-	-	-	-	34°57'17.9"N 126°43'53.3"E	-	RNP APCH	CG 320 ft/NM to 4 000 ft
009	TF	XEROX	-	281 (272.2)	10.7	-	+4 000	-	34°57'41.4"N 126°30'53.8"E	-	RNP APCH	-
010	HM	XEROX	-	080 (071.6)	-	L	-6 000 +5 000	-230	34°57'41.4"N 126°30'53.8"E	-	-	HOLDING 5 NM LEG
011	HM	FRISA	-	265 (256.6)	-	L	-7 000 +6 000	-230	35°17'25.0"N 127°06'14.5"E	-	-	HOLDING 5 NM LEG

Change : New procedure.

AERODROME ELEV 48 ft
HEIGHTS RELATE TO
THR RWY 22R - ELEV **48 ft**
HIGHEST ELEV TDZ **48 ft**

GWANGJU APP	130.0
	228.9
GWANGJU TWR	118.05
	254.6

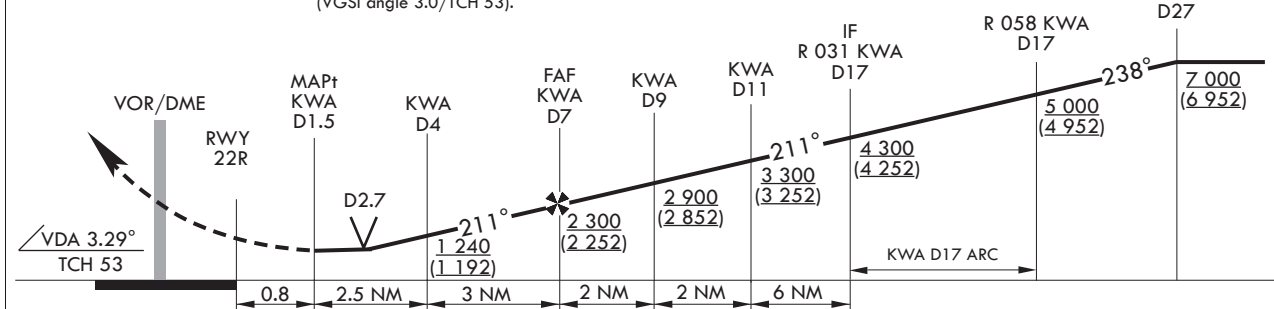
**GWANGJU/Gwangju(RKJJ)
VOR/DME RWY 22R**


4 000 ↑ HDG 210°		KOTTY KWA D13
------------------------	--	------------------

MISSED APPROACH
Climb to 4 000 ft on HDG 210°, then right turn
direct to KOTTY and hold.

* VGSi and descent angle not coincident (VGSi angle 3.0/TCH 53).

TRANSITION	ALT	14 000
TRANSITION	LVL	FL 140



CATEGORY	A	B	C	D
S-VOR 22R	740/40 692(700-3/4)		740-1 3/4 692(700-1 3/4)	
S-VOR 22R (ALS INOP)	740/55 692(700-1)		740-2 692(700-2)	
 CIRCLING*	740-1 692(700-1)	1 140-1 1/2 1 092(1 100-1 1/2)	1 140-3 1 092(1 100-3)	1 380-3 1 332(1 400-3)

* Circling not authorized for west of RWY 22-04.

INTENTIONALLY

LEFT

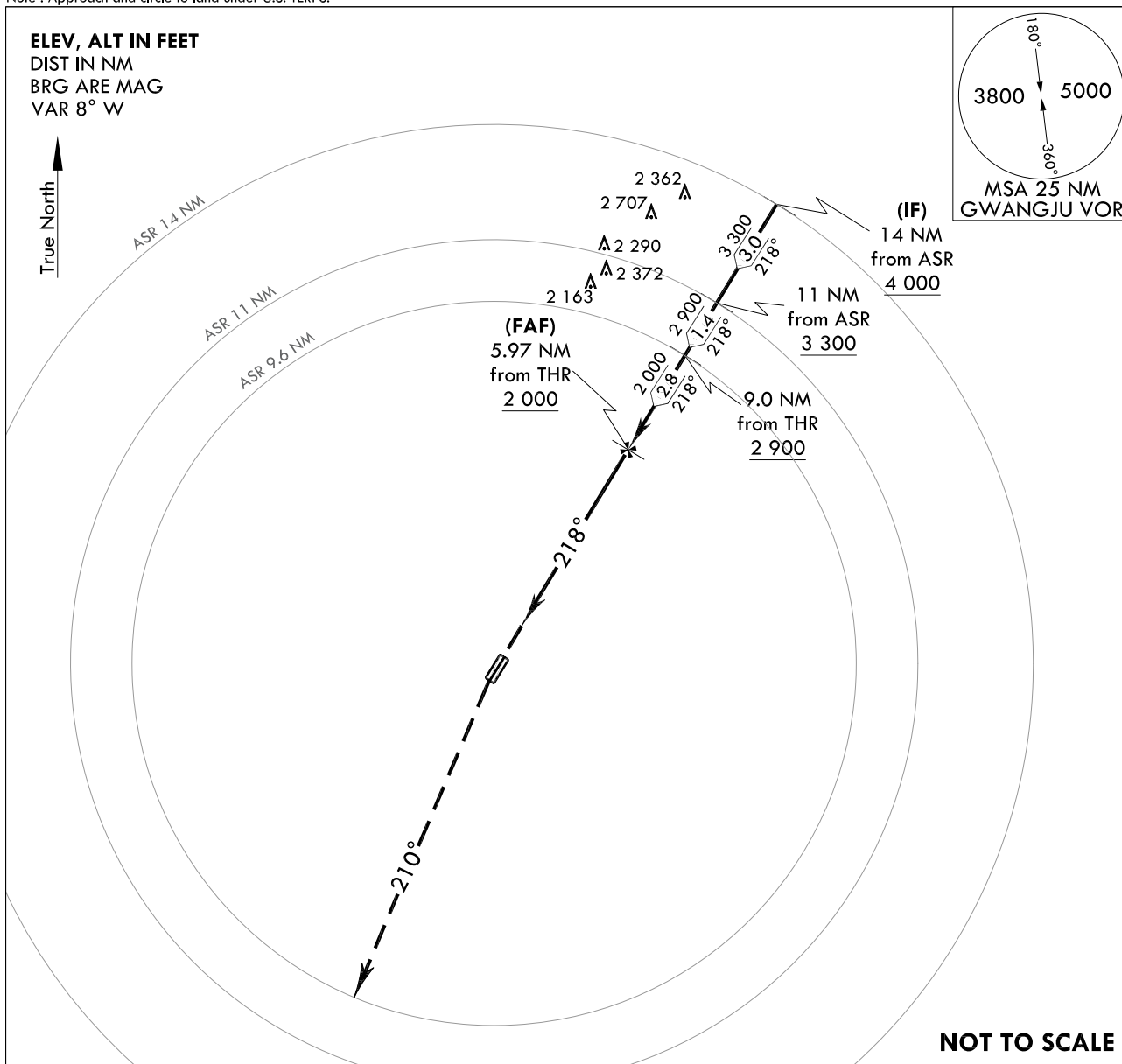
BLANK

AERODROME ELEV 48 ft
 HEIGHTS RELATED TO
 THR RWY 22R - ELEV **48 ft**
 HIGHEST ELEV TDZ **48 ft**

GWANGJU APP	130.0
	228.9
GWANGJU TWR	118.05
	254.6

GWANGJU/Gwangju(RKJJ)
PAR RWY 22R

Note : Approach and circle to land under U.S. TERPS.

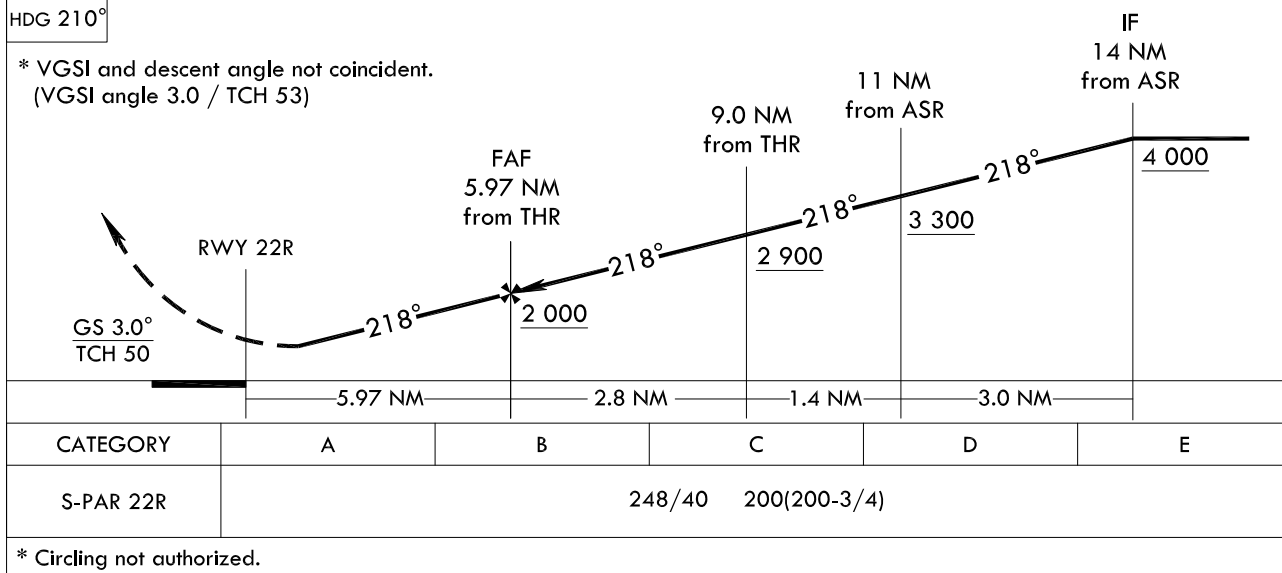


5 000
↑
HDG 210°

Climb to 5 000 ft on HDG 210°, then expect radar vector.

TRANSITION	ALT	14 000
TRANSITION	LVL	FL 140

* VGSI and descent angle not coincident.
(VGSI angle 3.0 / TCH 53)



* Circling not authorized.

Change : Page control.

INTENTIONALLY

LEFT

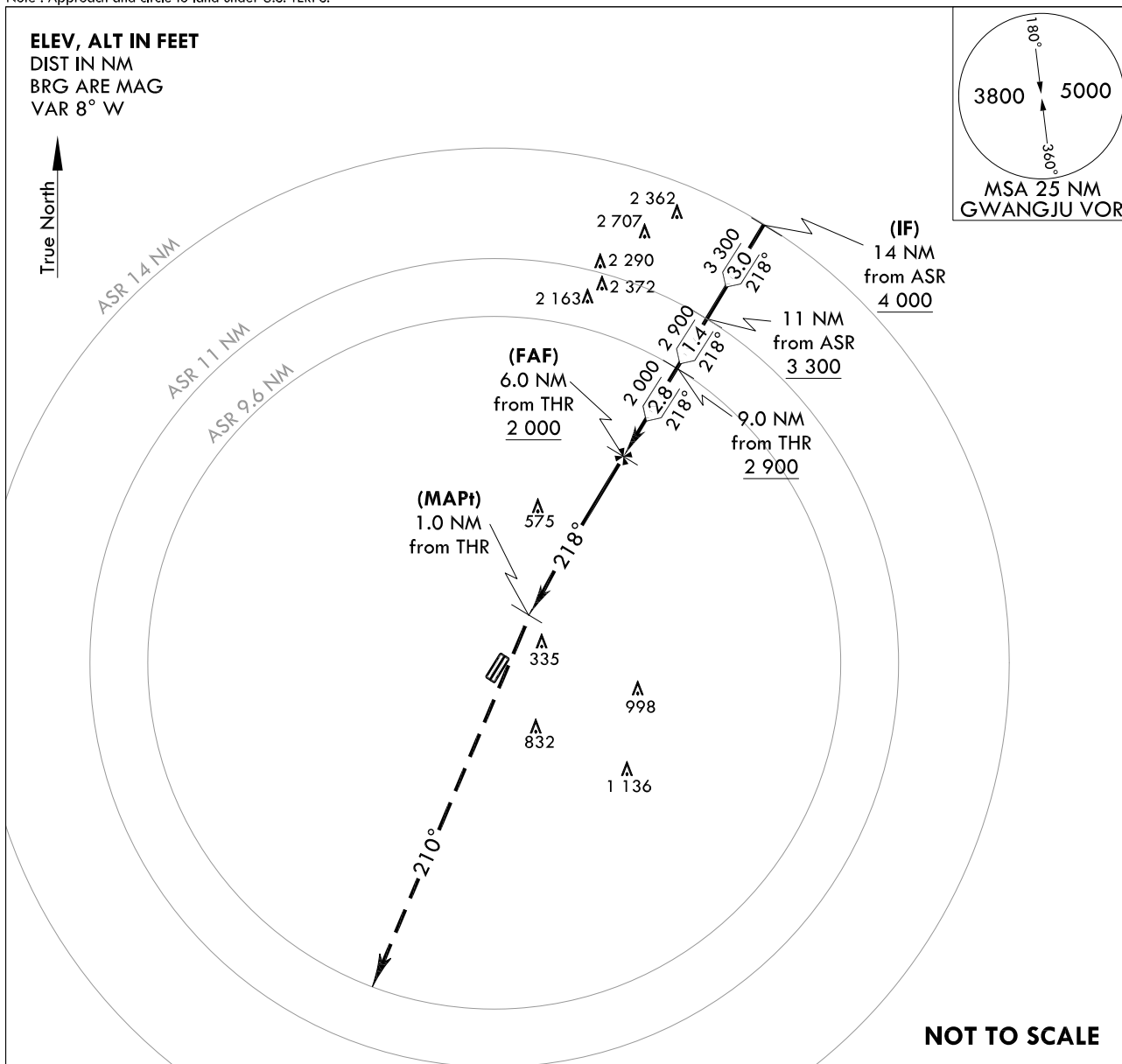
BLANK

AERODROME ELEV 48 ft
HEIGHTS RELATED TO
THR RWY 22R - ELEV 48 ft
HIGHEST ELEV TDZ 48 ft

GWANGJU APP	130.0
	228.9
GWANGJU TWR	118.05
	254.6

GWANGJU/Gwangju(RKJJ)
ASR RWY 22R

Note : Approach and circle to land under U.S. TERPS.

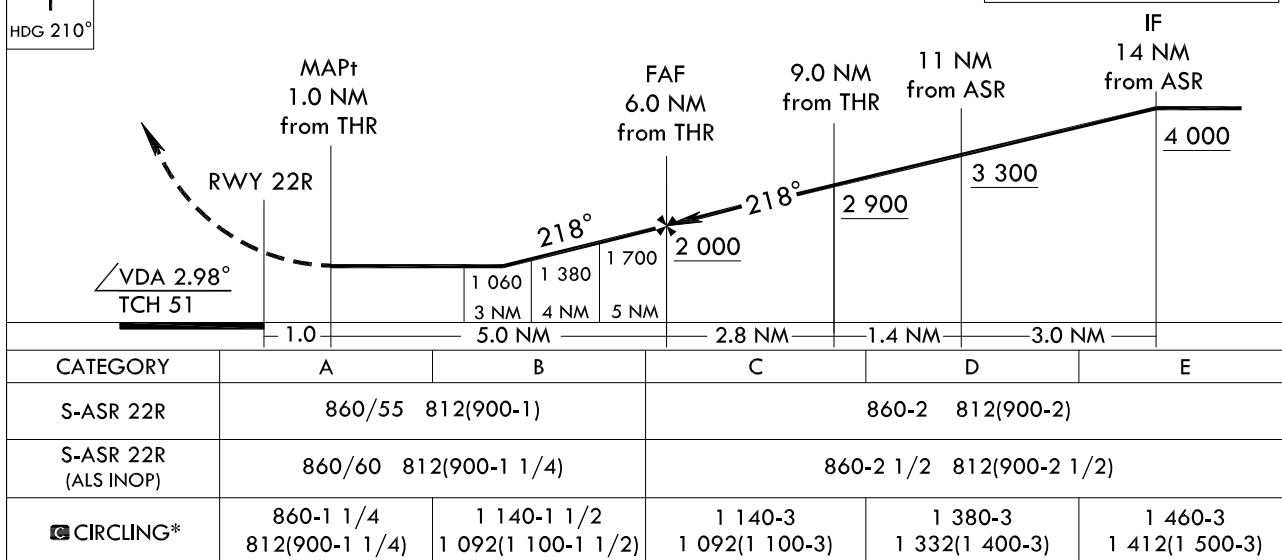


5 000
↑
HDG 210°

MISSED APPROACH

Climb HDG 210° to 5 000 ft, then expect for radar vector.

TRANSITION	ALT	14 000
TRANSITION	LVL	FL 140



* Circling not authorized for west of RWY 22-04.

Change : Page control.

INTENTIONALLY

LEFT

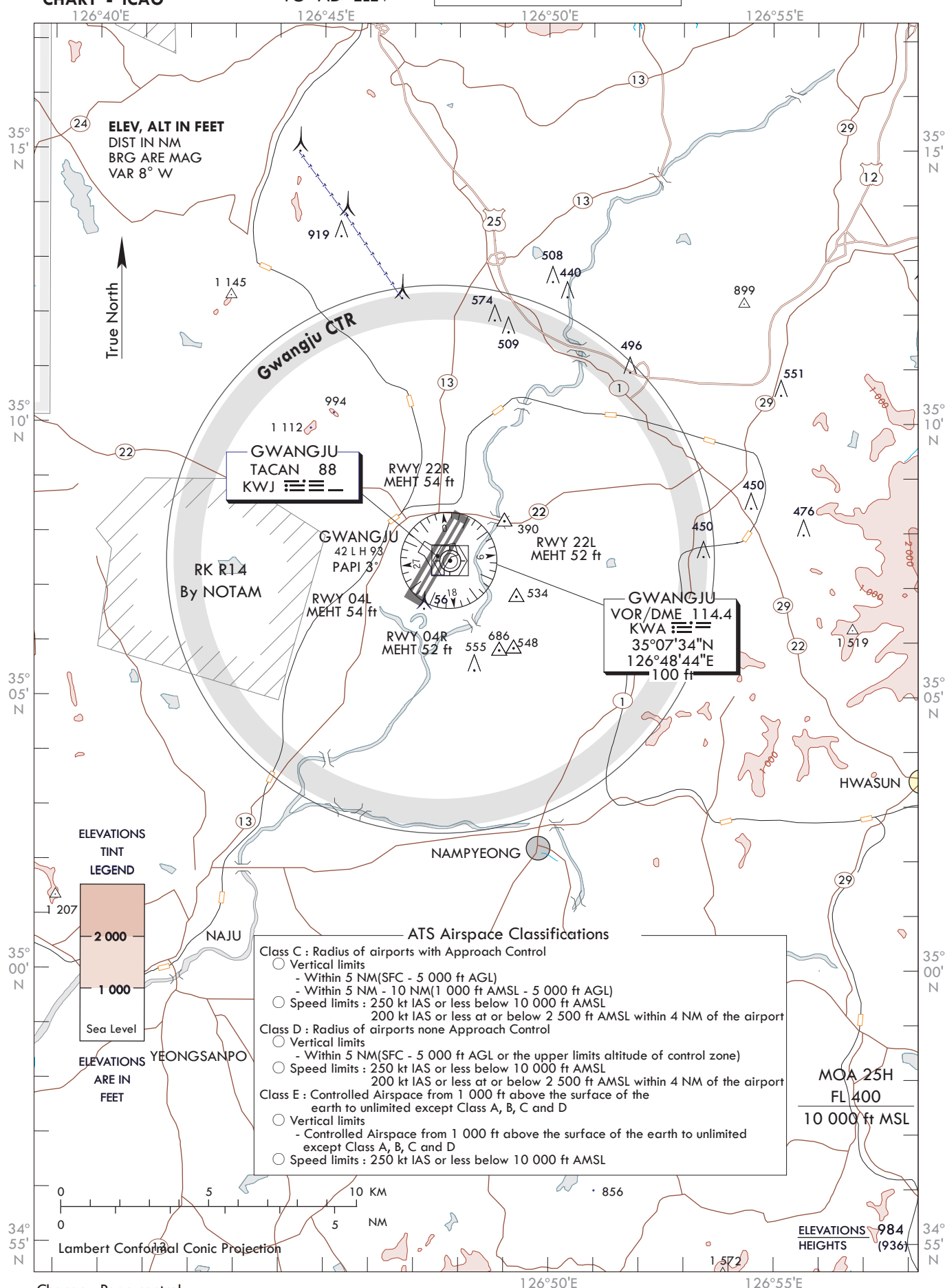
BLANK

**VISUAL
APPROACH
CHART - ICAO**

AD ELEV 48 ft
HEIGHTS RELATED
TO AD ELEV

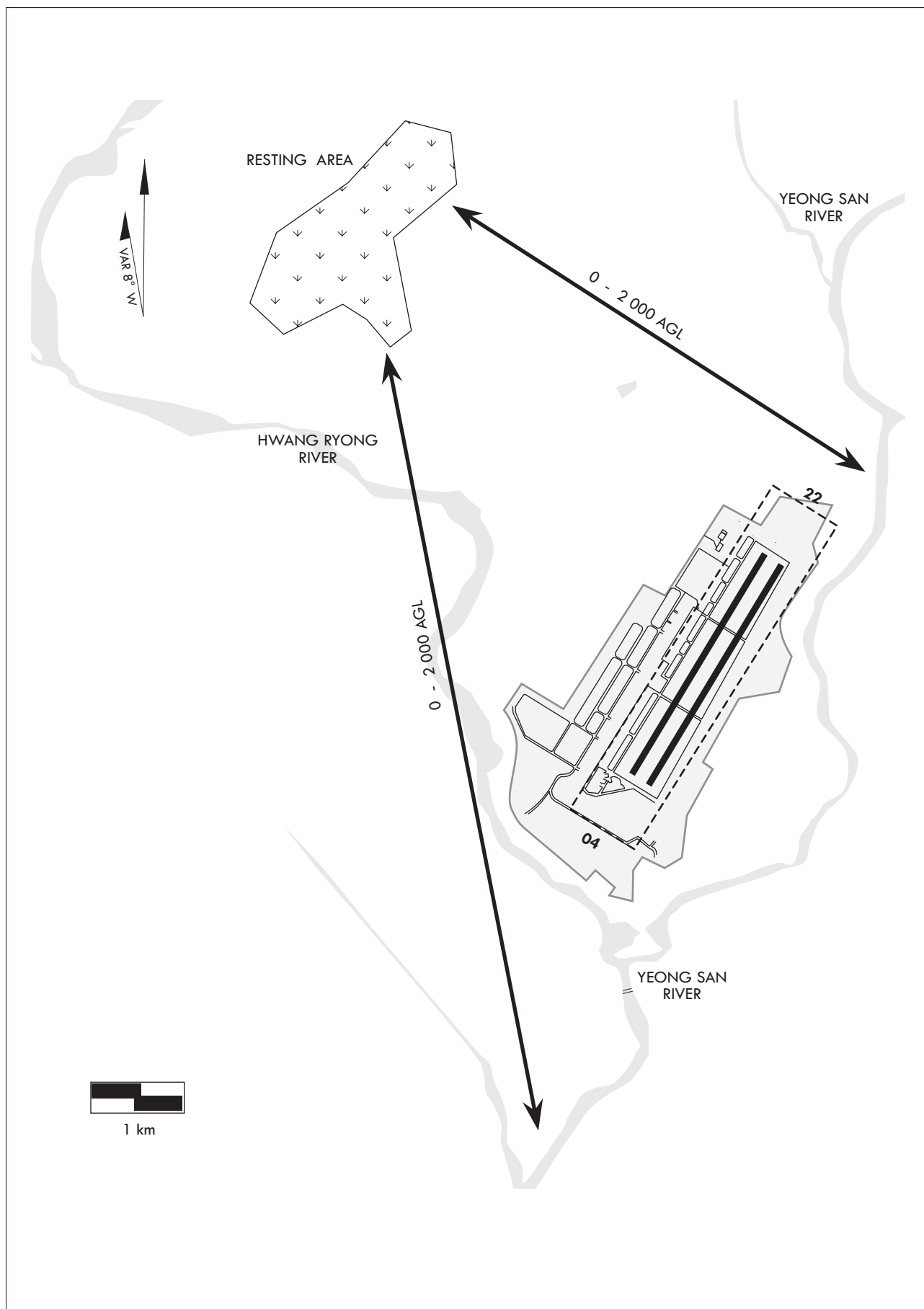
GWANGJU	APP	130.0	228.9
	DEP	124.0	347.2
	TWR	118.05	254.6

GWANGJU/Gwangju(RKJJ)



Change : Page control.

BIRD CONCENTRATION - GWANGJU INTERNATIONAL



Change : Page control.