

TWR	118.2(E)	118.8(W)
GND	121.75(E)	121.7(W)
APRON	121.65	122.175
	123.675	121.8
		123.325

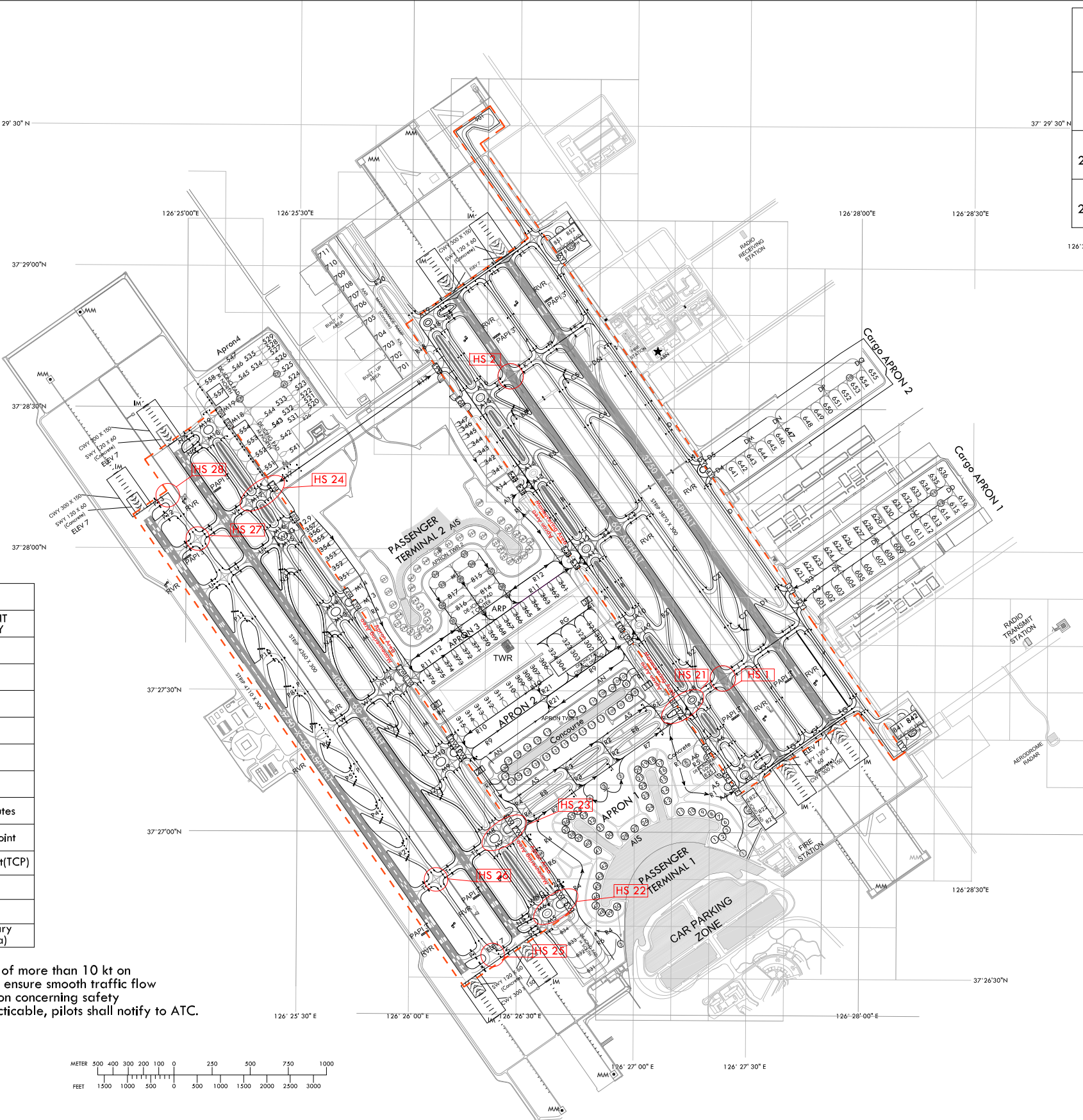
ELEVATIONS AND DIMENSION
IN METERS BEARINGS ARE
MAGNETIC



ANNUAL RATE OF CHANGE
6' W

LEGEND	
	VOR CHECK-POINT AND FREQUENCY
	Stop-bar light
	Holding position
	Taxi lane
	Gate
	Remote stand
	Taxi routes
	De-icing pad taxi routes
	Powered taxi-start point
	Transfer of control point(TCP)
	Open Channel
	Hot Spot
	ATC service boundary (Maneuvering Area)

Note
All aeroplane will taxi at speeds of more than 10 kt on Taxiways A, B, C, D, M, N or P to ensure smooth traffic flow unless there is exceptional direction concerning safety factors by ATC. And if it is impracticable, pilots shall notify to ATC.



HS 1	AIRCRAFT TAXIING ON TAXIWAY J FROM RUNWAY 15L AFTER LANDING USE CAUTION WHEN ATC UTILIZES RUNWAY 15R FOR TAKEOFFS. DO NOT CROSS THE HOLDING MARKING FOR RUNWAY 15R WITHOUT ATC AUTHORIZATION.
HS 2	AIRCRAFT TAXIING ON TAXIWAY K FROM RUNWAY 33R AFTER LANDING USE CAUTION WHEN ATC UTILIZES RUNWAY 33L FOR TAKEOFFS. DO NOT CROSS THE HOLDING MARKING FOR RUNWAY 33L WITHOUT ATC AUTHORIZATION.
HS 21 ~ 24	USE CAUTION OF CONFUSION ON TAXIWAYS. DO NOT PROCEED TAXIING BEYOND TRANSFER OF CONTROL POINTS WITHOUT CLEARANCE FROM INCHEON APRON OR GROUND(TOWER).
HS 25 ~ 28	USE CAUTION OF CONFUSION ON TAXIWAYS.

Note 1
When non-standard taxi routes are applicable, Incheon APRON will issue transition taxi instructions one to another taxilane in APRON 2, APRON 3, APRON 4 and Cargo APRONS.

Note 2
Aircraft shall not taxi into maneuvering area without clearance from Incheon Tower or Ground.

		SURFACE	WIDTH	STRENGTH
A P R O N	Apron 1, 2	Concrete	-	PCN 86/R/B/X/T
	Cargo Apron 1			PCN 85/R/B/X/T
	Apron 3, 4	Concrete	30 m	PCN 86/R/B/X/T
T W Y	TWY A, D	Concrete	Shoulder : 15 m - Paved : 12 m - Turfed : 3 m	PCN 88/F/B/X/T
	TWY B, C	Asphalt		PCN 85/R/B/X/T
	TWY M	Concrete	30 m	PCN 75/F/B/X/T
	TWY N	Asphalt	Shoulder : 15 m - Paved : 15 m	PCN 75/F/B/X/T
	TWY P	Asphalt		PCN 75/F/B/X/T

Taxiway edge lights on all taxiways curve area
Taxiway center line lights on all taxiways
PAX Terminal and Concourse A VDGS equipped

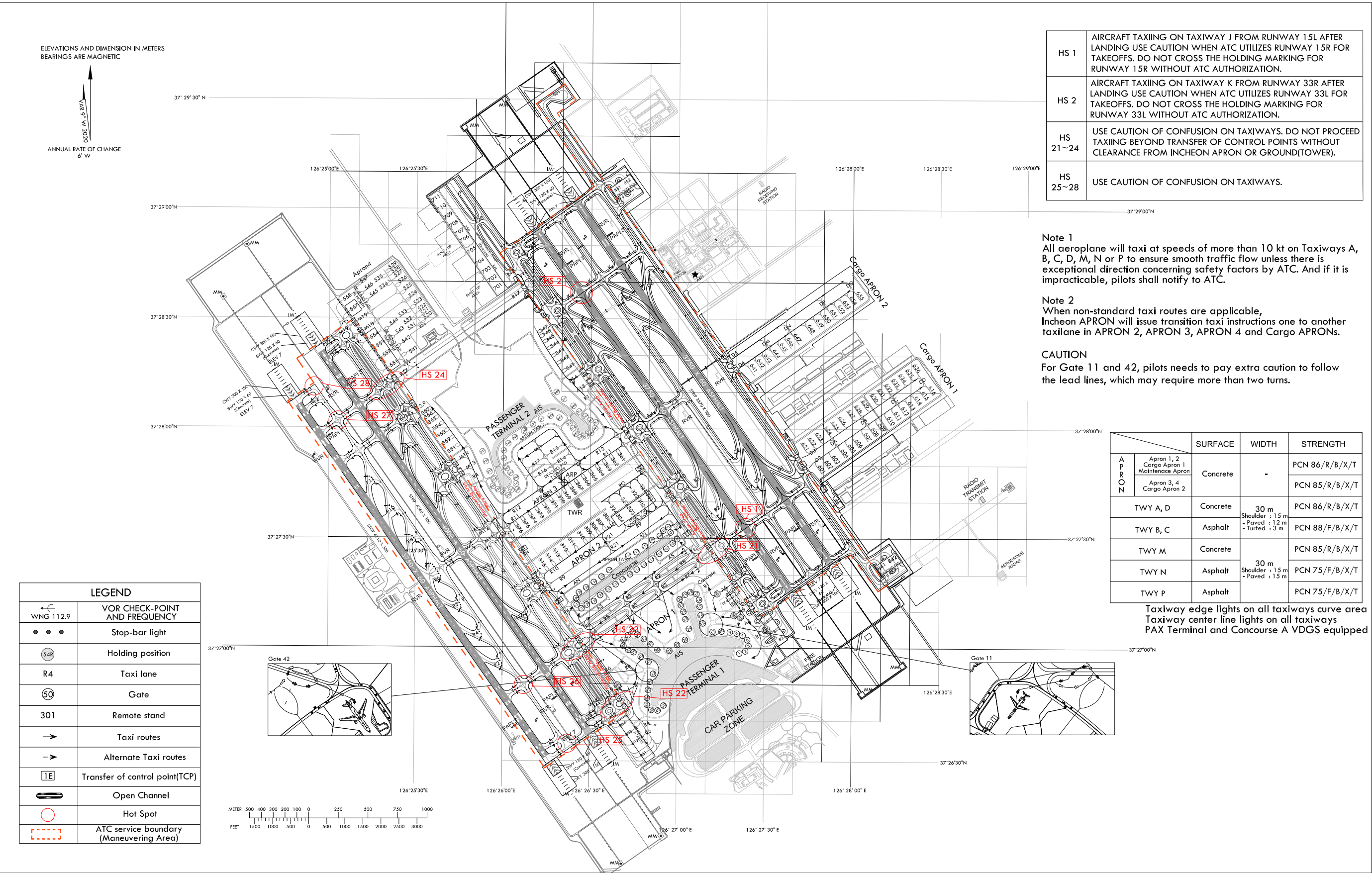
Change : Establishment of ACFT stands NR. 520~529, 531~535, 547 and 558 for apron 4.

AERODROME GROUND
MOVEMENT CHART - ICAO

APRON ELEV 6 m

TWR	118.2(E)	118.8(W)
GND	121.75(E)	121.7(W)
APRON	121.65	122.175
	121.8	123.325

SEOUL / Incheon Intl
RWY 15L/R, 33L/R ARRIVAL

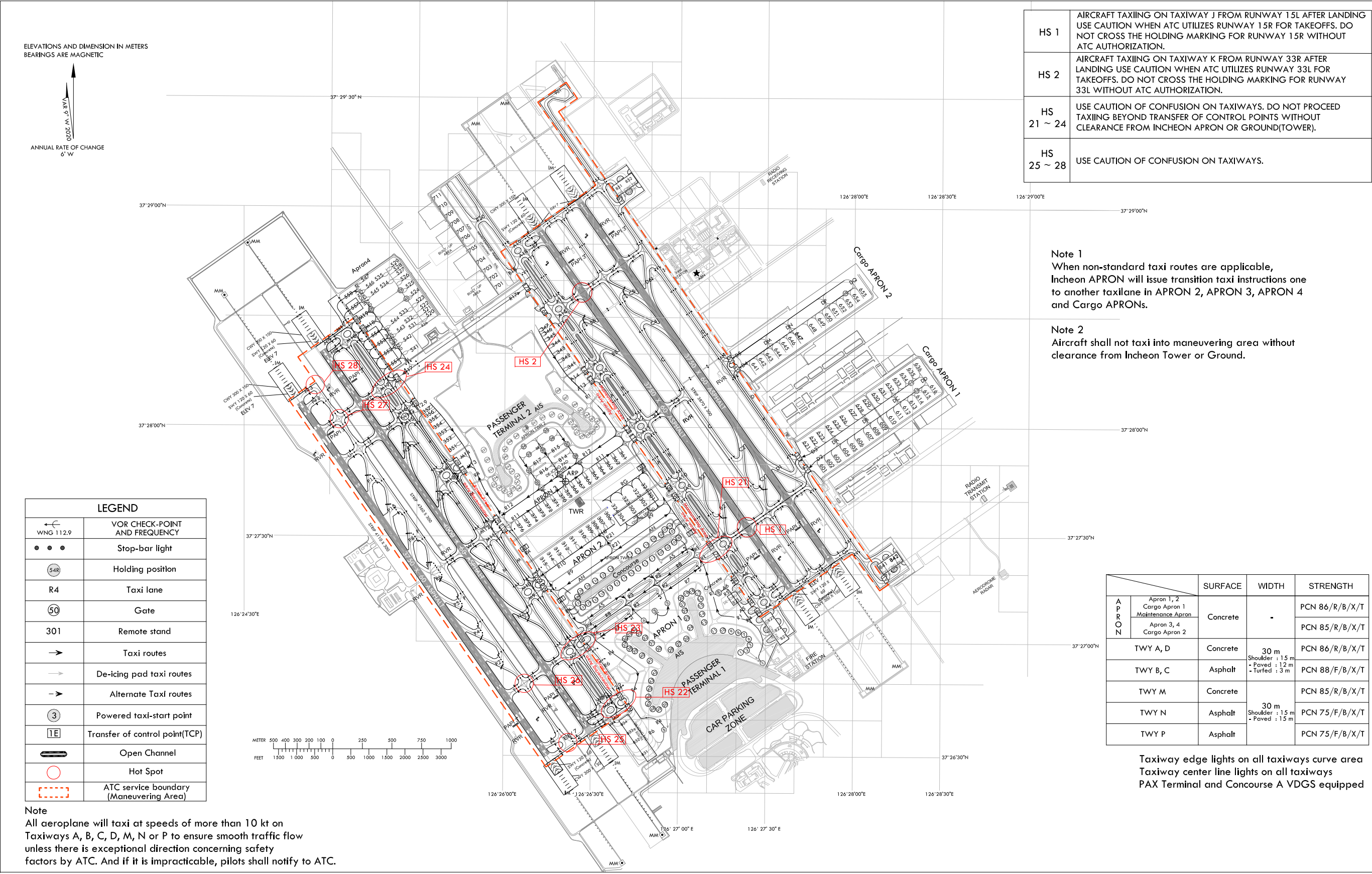


AERODROME GROUND
MOVEMENT CHART - ICAO

APRON ELEV 6 m

TWR 118.2(E) 118.8(W)
GND 121.75(E) 121.7(W)
APRON 121.65 122.175 123.675
121.8 123.325

RKSI AD CHART 2 - 8
16 DEC 2021
SEOUL / Incheon Intl
RWY 16L/R, 34L/R DEPARTURE



HS 1	AIRCRAFT TAXIING ON TAXIWAY J FROM RUNWAY 15L AFTER LANDING USE CAUTION WHEN ATC UTILIZES RUNWAY 15R FOR TAKEOFFS. DO NOT CROSS THE HOLDING MARKING FOR RUNWAY 15R WITHOUT ATC AUTHORIZATION.
HS 2	AIRCRAFT TAXIING ON TAXIWAY K FROM RUNWAY 33R AFTER LANDING USE CAUTION WHEN ATC UTILIZES RUNWAY 33L FOR TAKEOFFS. DO NOT CROSS THE HOLDING MARKING FOR RUNWAY 33L WITHOUT ATC AUTHORIZATION.
HS 21 ~ 24	USE CAUTION OF CONFUSION ON TAXIWAYS. DO NOT PROCEED TAXIING BEYOND TRANSFER OF CONTROL POINTS WITHOUT CLEARANCE FROM INCHEON APRON OR GROUND(TOWER).
HS 25 ~ 28	USE CAUTION OF CONFUSION ON TAXIWAYS.

Note 1
When non-standard taxi routes are applicable, Incheon APRON will issue transition taxi instructions one to another taxilane in APRON 2, APRON 3, APRON 4 and Cargo APRONS.

Note 2
Aircraft shall not taxi into maneuvering area without clearance from Incheon Tower or Ground.

	SURFACE	WIDTH	STRENGTH
APRON	Apron 1, 2 Cargo Apron 1 Maintenance Apron	Concrete	PCN 86/R/B/X/T
	Apron 3, 4 Cargo Apron 2	Concrete	PCN 85/R/B/X/T
TWY A, D	Concrete	30 m Shoulder : 15 m Paved : 12 m Turfed : 3 m	PCN 86/R/B/X/T
TWY B, C	Asphalt		PCN 88/F/B/X/T
TWY M	Concrete		PCN 85/R/B/X/T
TWY N	Asphalt	30 m Shoulder : 15 m Paved : 15 m	PCN 75/F/B/X/T
TWY P	Asphalt		PCN 75/F/B/X/T

Taxiway edge lights on all taxiways curve area
Taxiway center line lights on all taxiways
PAX Terminal and Concourse A VDGs equipped

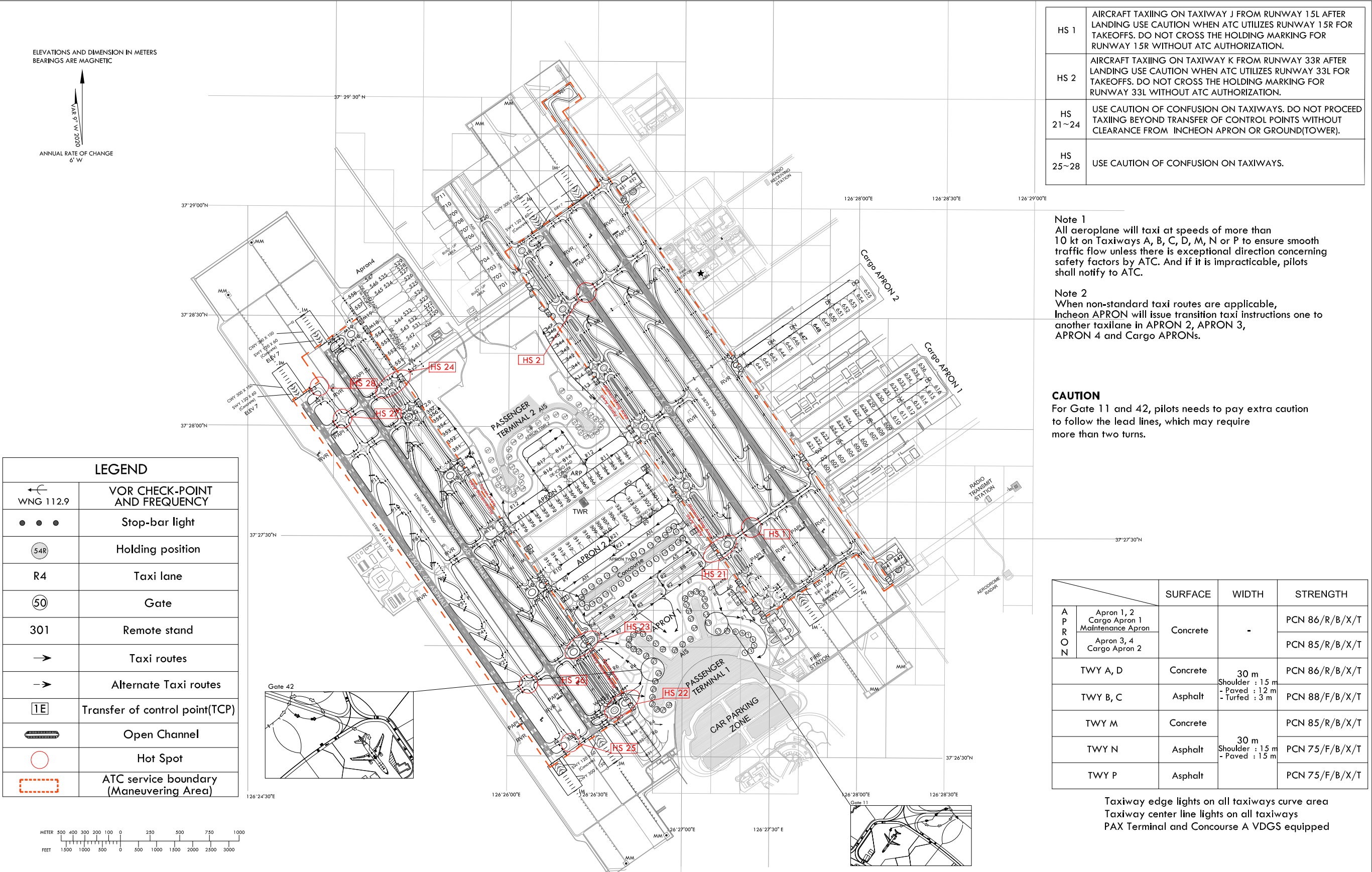
Change : Establishment of ACFT stands NR. 520~529, 531~535, 547 and 558 for apron 4.

AERODROME GROUND
MOVEMENT CHART - ICAO

APRON ELEV 6 m

TWR 118.2(E) 118.8(W)
GND 121.75(E) 121.7(W)
APRON 121.65 122.175 123.675
121.8 123.325

SEOUL / Incheon Intl
RWY 16L/R, 34L/R ARRIVAL



Change : Establishment of ACFT stands NR. 520~529, 531~535, 547 and 558 for apron 4.