

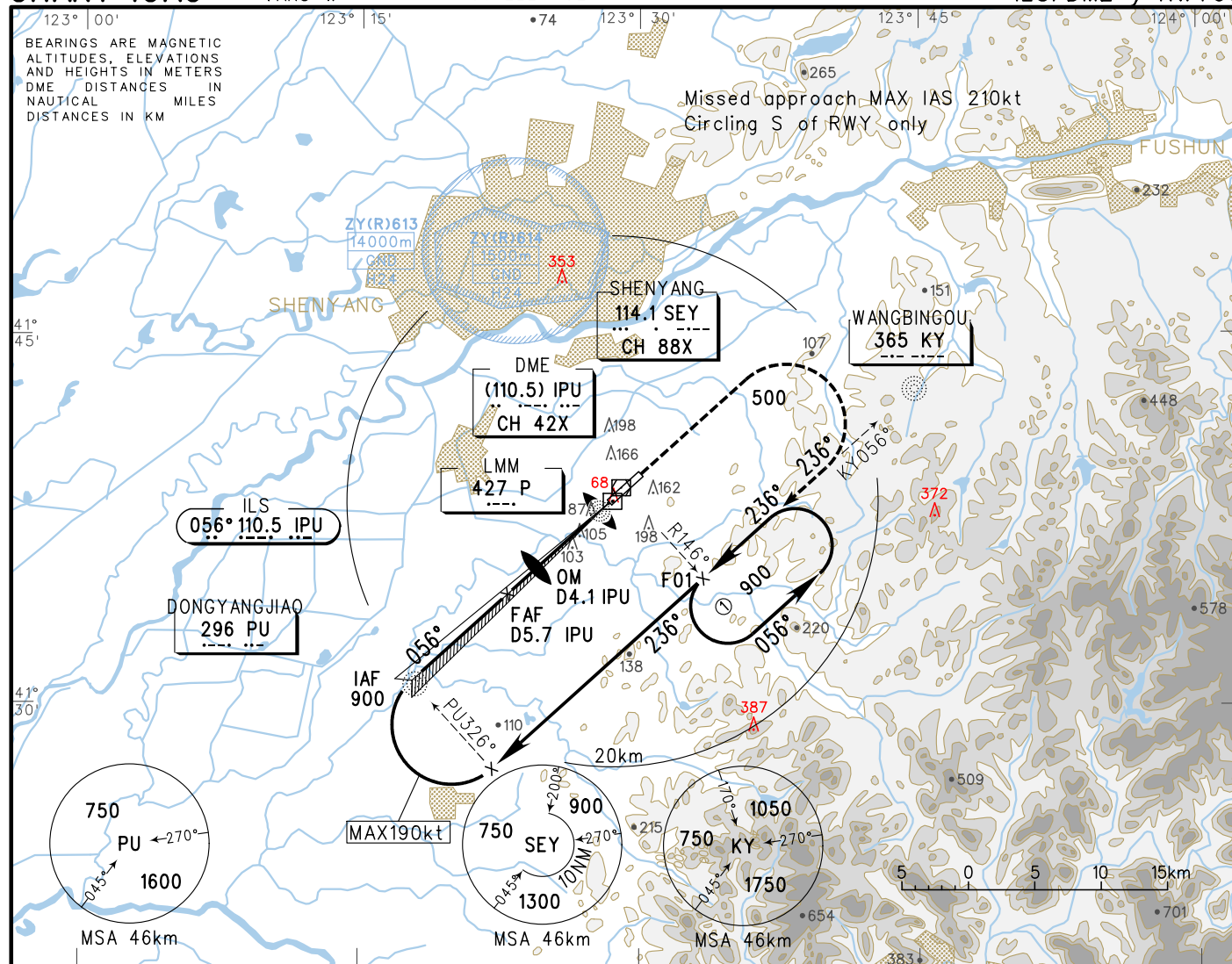
**INSTRUMENT APPROACH CHART-ICAO** **VAR8°W** **AERODROME ELEV 61** **THR RWY06 ELEV 52** **ATIS 127.45** **APP01 125.55(126.55)** **APP02 119.825(126.55)** **TWR 118.1(124.3)** **ZYTX SHENYANG/Taoxian** **ILS/DME y RWY06**

AERODROME ELEV 61  
THR RWY06 ELEV 52

ATIS 127.45  
APP01 125.55(126.55)  
APP02 119.825(126.55)  
TWR 118.1(124.3)

ZYTX SHENYANG/Taoxian

ILS/DME v RWY06

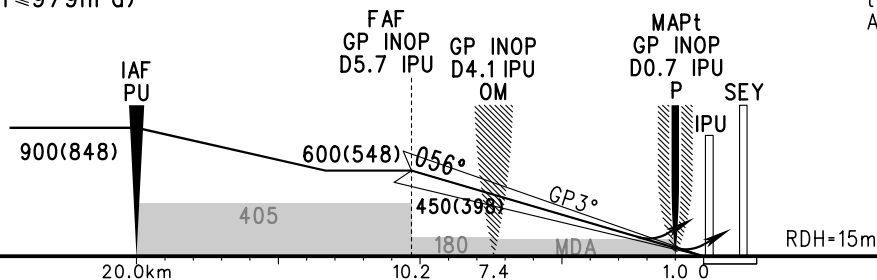


GP INOP	DME (IPU) (NM)	8	7	6	5	4	3	2
	ATL (m)				537	440	343	246

TL	3600
TA	3000
	3300(QNH $\geq 1031\text{hPa}$ )
	2700(QNH $\leq 979\text{hPa}$ )

### MISSED APPROACH

Climb straight ahead to 500,  
turn RIGHT along KY056° to F01  
Alt 900, contact ATC.



	A	B	C	D	FAF-MAPt(GP INOP) 9.2km						
ILS/DME <sup>DA(H)</sup> RVR/VIS	112(60) 550/800		117(65) 550/800	122(70) 550/800	GS in kt kmH	80 150	100 185	120 220	140 260	160 295	180 335
					Time min:sec	3:44	2:59	2:29	2:08	1:52	1:39
GP INOP <sup>MDA(H)</sup> VIS	165(114) 1300				Rate of descent m/s	2.2	2.7	3.2	3.8	4.3	4.9
CIRCLING <sup>MDA(H)</sup> VIS	260(199) 2100	260(199) 2800	320(259) 3700	330(269) 4600	Changes: OBST.						