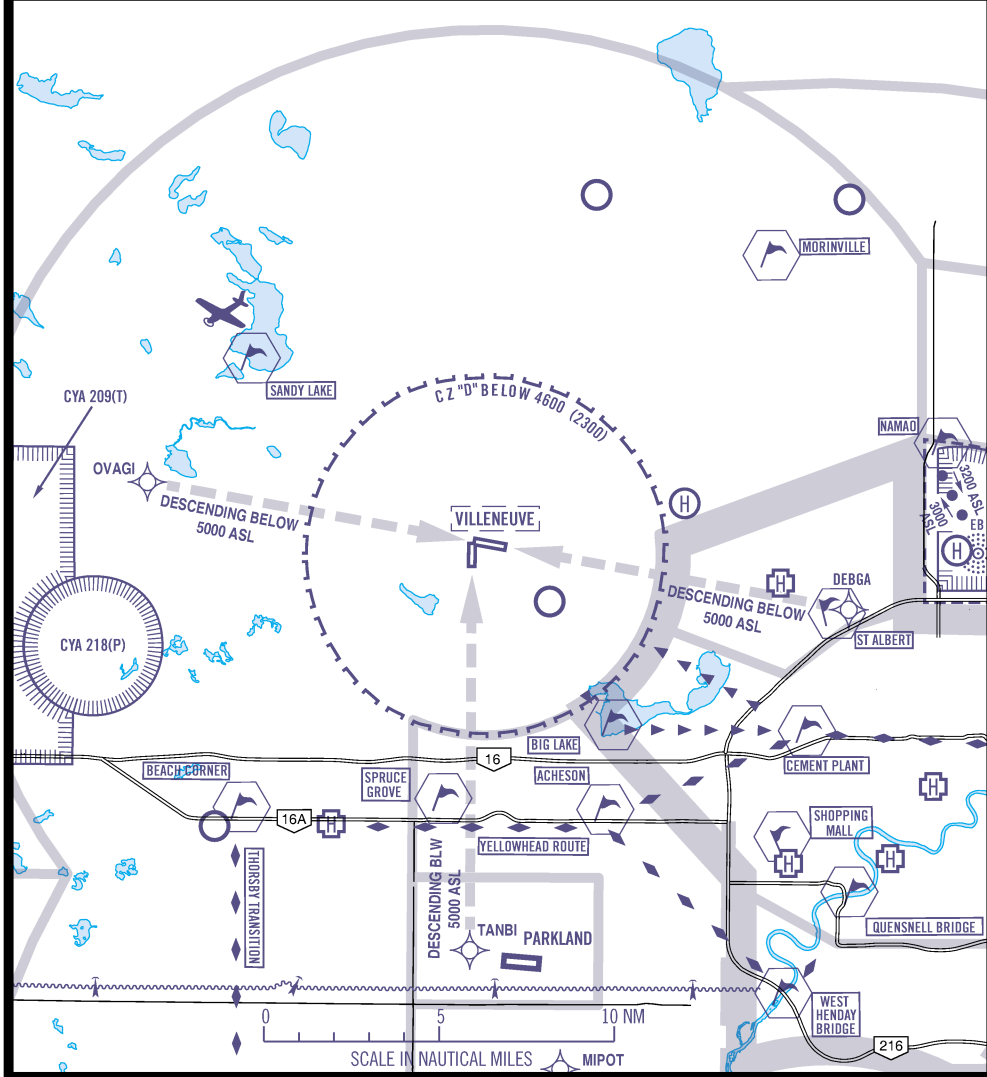
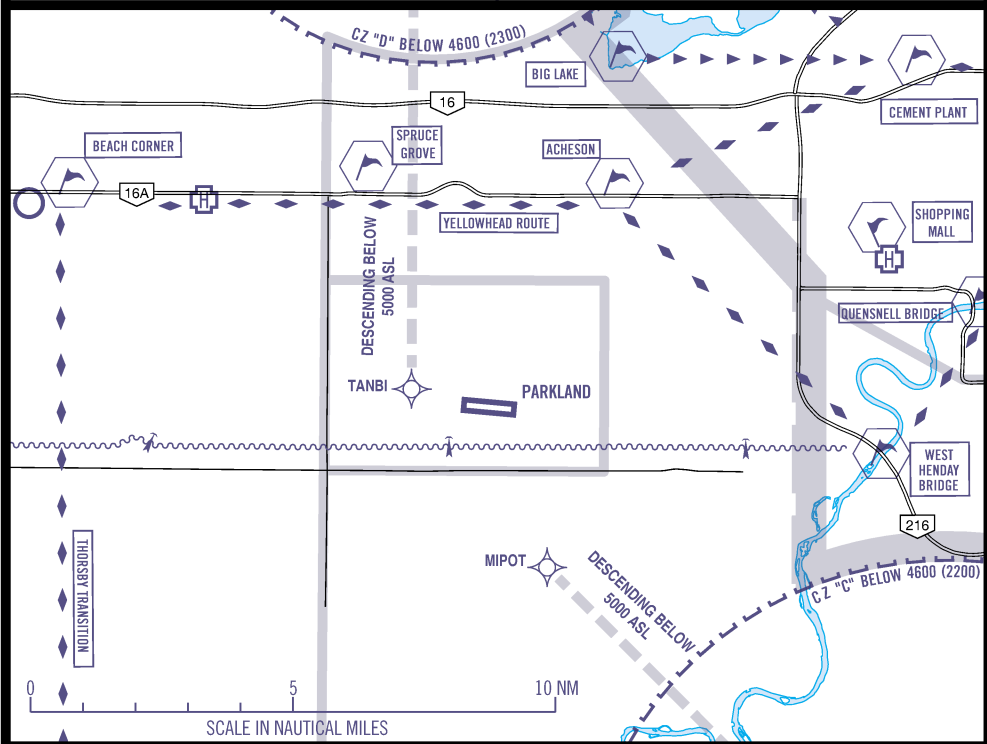


AIRCRAFT OPERATIONS	LEGEND	LOCAL FREQUENCIES
All aircraft, prior to operating in Edmonton Class C airspace require a discrete transponder code which may be obtained by filing a flight plan or by calling 1-888-358-7526.	<div>Common Frequency Area (CFA)</div> <div>Hang Gliding Operations Area</div> <div>Ultra-Light Operations Area</div> <div>Training Area</div> <div>Parachute Dropping Operations Area</div> <div>Caution Areas for Military Activity</div> <div>VFR Checkpoint</div> <div>IFR Waypoint</div> <div>IFR Approach Tracks</div> <div>IFR Arrival Routes</div> <div>VFR Route - Follow route unless otherwise instructed</div> <div>VFR Route - One way</div> <div>VFR Route - Transit Route</div> <div>Terminal Class "C" Route</div> <div>VFR Heli Route</div> <div>Helicopter Training Area</div>	Edmonton Intl Terminal – 127.4 Edmonton Intl Tower – 118.3 Edmonton/Villeneuve Tower – 118.8 Edmonton/Namoo MFAU – 118.0 West Practice Area (CYA209) – 122.75 Edmonton City ATF – 123.2 Edmonton Radio (FISE), Edmonton RCO – 122.375
The VFR arrival/departure routes described are provided for aircraft intending entry into Edmonton Class C airspace to allow ATC time to assess planned route and determine potential conflicts.		COMMUNICATION GUIDELINES FOR USING A COMMON FREQUENCY AREA (CFA)
IFR Approach Track: depicts IFR approach tracks from the Initial Fix inbound to the threshold. Aircraft will be descending below 5000 ASL on these tracks.		Pilots are encouraged to use the designated common frequency when operating below Class C airspace within the designated area. Radio transmissions on a common frequency should be the minimum required to provide the aircraft's position and pilot's intentions. Example transmission:
IFR Arrival Route: depicts Standard IFR arrival routes into the TCA. IFR aircraft will be descending to 8000 ASL.		"EDMONTON AREA TRAFFIC, CESSNA GOLF ALPHA BRAVO CHARLIE TWO MILES WEST OF THE CEMENT PLANT, CONDUCTING A CITY TOUR AT 4000 FEET"
Once an aircraft has been radar identified by ATC, pilots can expect: <ul style="list-style-type: none">If there is conflicting traffic, ATC will provide traffic information, and may assign radar vectors, altitudes, and/or specific routings.If there is no conflicting traffic, to be cleared on course.		Using a common frequency does not alleviate a pilot from the responsibility for monitoring and/or communicating on, when required, an ATC frequency, aerodrome traffic frequency (ATF) or any other appropriate frequency.

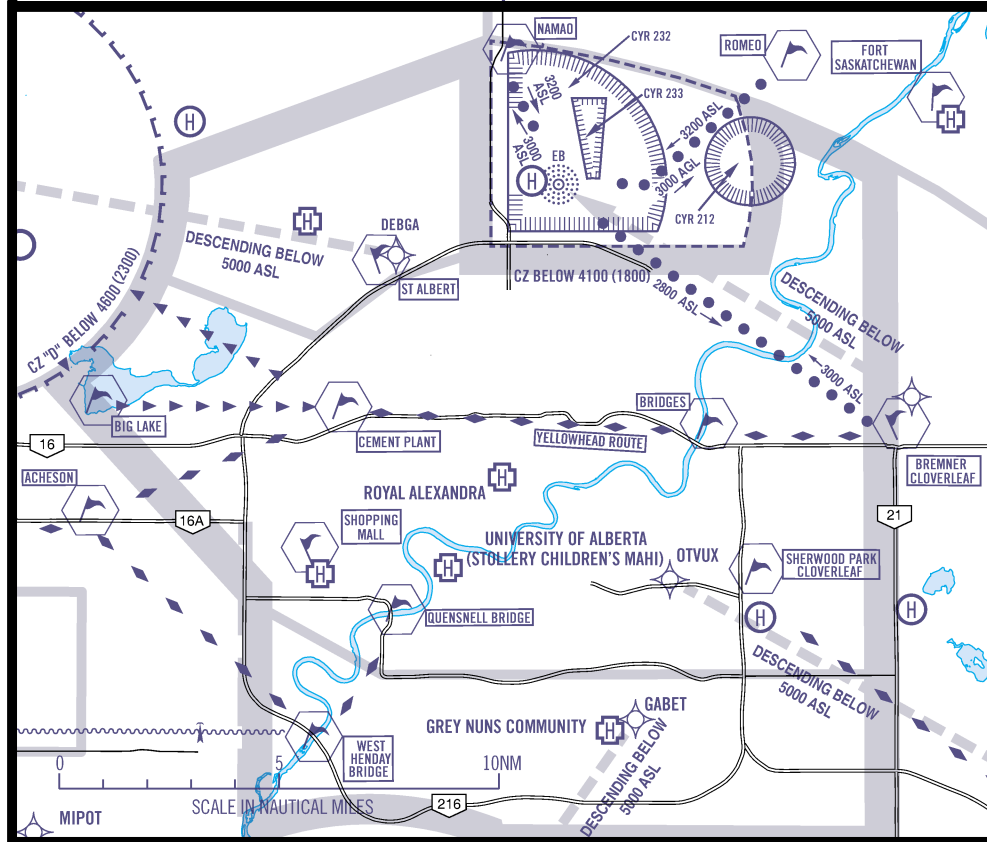
EDMONTON / VILLENEUVE ARR / DEP	ATIS	GND	TWR	TML	ATF	NOT FOR NAVIGATION
	128.35	120.8	118.8	127.4	118.8	
ARRIVALS						
FROM THE EAST: Proceed towards CEMENT PLANT; then direct Edmonton/Villeneuve; remain on or north of the YELLOWHEAD TRANSITION route.						
FROM THE SOUTH: Intercept the THORSBY TRANSITION route at either PIGEON or THORSBY; proceed northbound to BEACH CORNER; then direct Edmonton/Villeneuve.						
FROM EDMONTON INTL: From WEST HENDAY BRIDGE; proceed direct BIG LAKE; then direct Edmonton/Villeneuve.						
DEPARTURES						
TO THE EAST: Remain on or north of the YELLOWHEAD TRANSITION route until past BRIDGES; proceed on course.						
TO THE SOUTH: Proceed towards BEACH CORNER; intercept the THORSBY TRANSITION route; proceed southbound to THORSBY; proceed on course.						



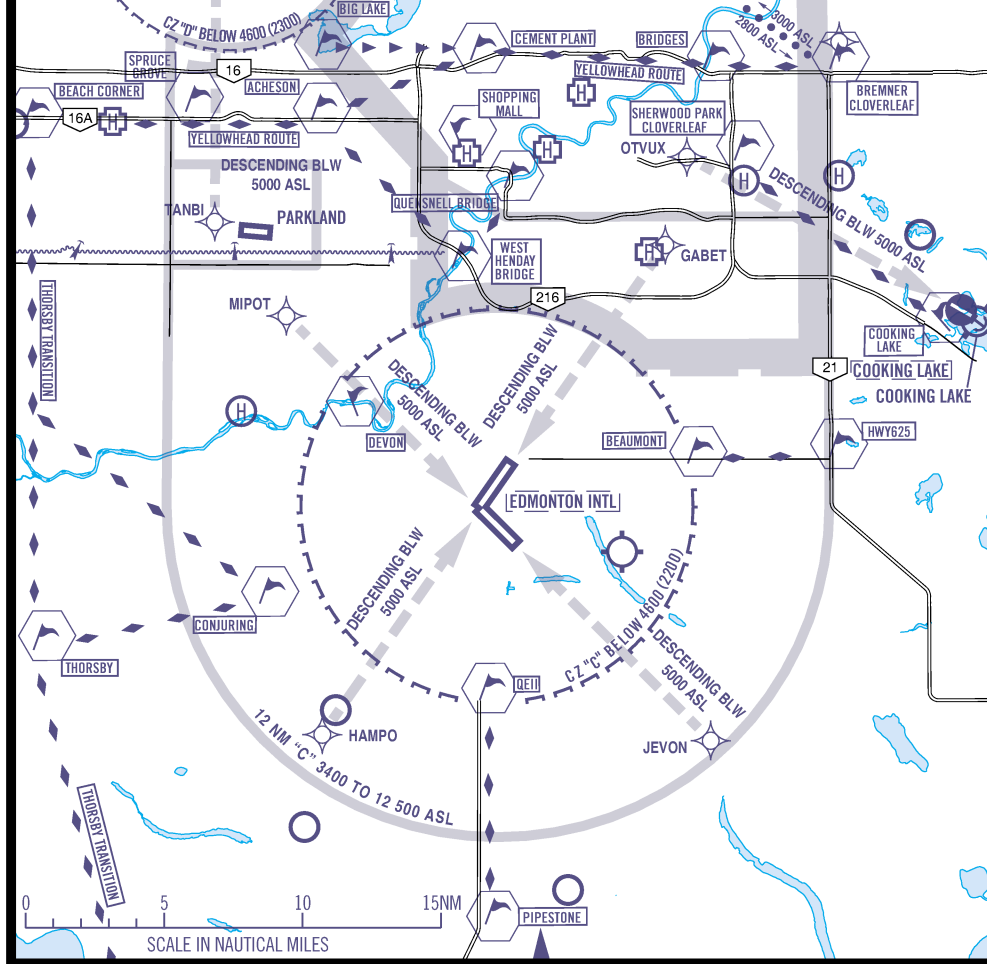
EDMONTON / PARKLAND ARR / DEP	MF	NOT FOR NAVIGATION
	122.7	
ARRIVALS		
FROM THE NORTH/EDMONTON/VILLENEUVE: Route via SPRUCE GROVE, then south on Campsite Rd until south of Hwy 628, then proceed eastbound to Edmonton/Parkland.		
FROM THE SOUTH: Transit via the THORSBY TRANSITION route northbound, until Hwy 627, and then proceed eastbound to Edmonton/Parkland.		
FROM THE EAST: Transit via the YELLOWHEAD TRANSITION route to CEMENT PLANT; direct ACHESON, then southbound to Edmonton/Parkland.		
DEPARTURES		
TO THE WEST/PRACTICE AREA: Contact Edmonton Intl Terminal 127.4; do not expect higher than 4000 ASL until west of Century Rd (Range Road 272). Aircraft inbound for practice area, contact terminal only if requesting higher than 4500 ASL prior to entering practice area.		
TO THE NORTH/EDMONTON/VILLENEUVE: Transition via BIG LAKE; contact Edmonton Intl Terminal 127.4; aircraft continuing northbound do not expect higher than 4000 ASL until Hwy 16A (Stony Plain Rd).		
TO THE SOUTH: Proceed westbound along Hwy 627; contact Edmonton Intl Terminal 127.4. Intercept the YELLOWHEAD TRANSITION route; proceed southbound to THORSBY; proceed on course; do not expect higher than 4000 ASL until approaching the North Saskatchewan River.		
TO THE EAST: Proceed north-east towards CEMENT PLANT; contact with Edmonton Intl Terminal 127.4. Intercept the YELLOWHEAD TRANSITION route; proceed eastbound to BRIDGES; proceed on course; do not expect higher than 4000 ASL until east of Winterburn Rd (215 St).		
TO EDMONTON INTL: Obtain ATIS; proceed towards WEST HENDAY BRIDGE; contact Edmonton Intl Terminal 127.4.		



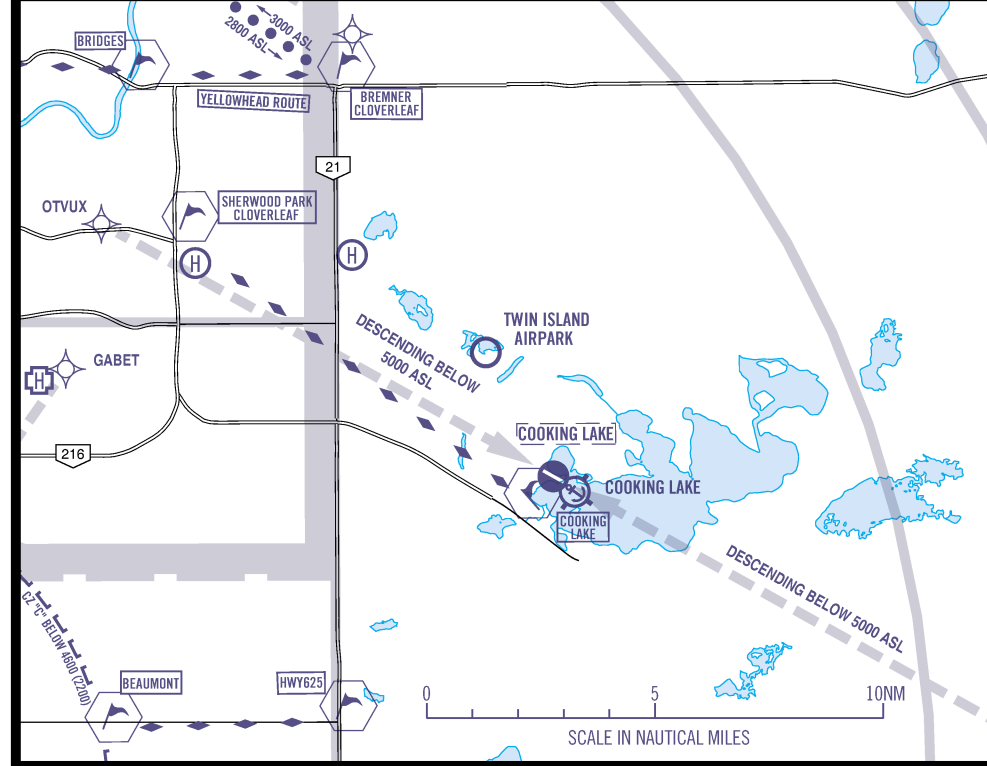
EDMONTON CITY ATF (123.2)	NOT FOR NAVIGATION
EDMONTON CITY ATF The Edmonton City ATF encompasses all Hospital ATFs and the following Class E (Transponder Airspace): 3000 TO BELOW 4100 ASL: Bounded by the Whittemud Freeway (South), Hwy 21(East), Anthony Henday Drive (North side of City), Big Lake (Northwest) 3000 TO BELOW 3400 ASL: Area under Edmonton/Villeneuve ILS 26 approach and between the Whittemud Freeway and Edmonton Intl	DEPARTURES TO EDMONTON INTL (from East of the extended centreline for RWY 02/20): Obtain ATIS; proceed direct MALL or QUESNEL BRIDGE; contact Edmonton Intl Tower 118.3; proceed direct WEST HENDAY BRIDGE. TO EDMONTON INTL (from East of the extended centreline for RWY 02/20): Obtain ATIS; proceed direct the intersection of Hwy 14/Anthony Henday Drive; proceed direct BEAUMONT; contact Edmonton Intl Tower 118.3. TO EDMONTON/VILLENEUVE: Obtain ATIS; Proceed direct CEMENT PLANT then direct Edmonton/Villeneuve; contact Edmonton/Villeneuve TWR 118.8.



EDMONTON INTL ARR / DEP	ATIS	CLNC DEL	GND	TWR	TML	EDMONTON RDO	NOT FOR NAVIGATION
	128.0	124.1	121.7	118.3	127.4	122.375	
ARRIVALS							
FROM THE SOUTH/SOUTHEAST: From PIPESTONE proceed inbound via Highway 72.							
FROM THE WEST/SOUTHWEST: From WABAMUN or THORSBY proceed inbound via CONJURING.							
FROM THE EAST/NORTHEAST: From HWY 625 proceed inbound via Hwy 19/Hwy 625.							
FROM THE NORTH/NORTHWEST: Proceed inbound via WEST HENDAY BRIDGE.							
DEPARTURES							
TO THE SOUTH/SOUTHEAST: Proceed outbound via QELI follow Hwy 2 south to PIPESTONE.							
TO THE WEST/SOUTHWEST: Proceed outbound via CONJURING then direct THORSBY.							
TO THE EAST/NORTHEAST: Proceed outbound via BEAUMONT, follow Hwy 19/ Hwy 625 east to HWY 625.							
TO THE NORTH/NORTHWEST: Proceed outbound via WEST HENDAY BRIDGE. <ul style="list-style-type: none">Traffic destined for Edmonton/Villeneuve proceed direct BIG LAKE.Traffic destined for the downtown area transition via QUESNEL BRIDGE.Northwest bound traffic transition via ACHESON or BIG LAKE.Northbound traffic transition via CEMENT PLANT.							



EDMONTON / COOKING LAKE ARR / DEP	TML	ATF	NOT FOR NAVIGATION
	127.4	123.2	
ARRIVALS			
FROM THE WEST: Intercept and follow the YELLOWHEAD TRANSITION route to BRIDGES; proceed direct COOKING LAKE.			
FROM THE NORTH/NORTHWEST: Remain on or east of the BRIDGES – COOKING LAKE track.			
DEPARTURES			
TO THE WEST: Proceed towards BRIDGES; contact Edmonton Intl Terminal 127.4; intercept the YELLOWHEAD TRANSITION route then: <ul style="list-style-type: none">Westbound traffic follow the YELLOWHEAD TRANSITION route west to BEACH CORNER; proceed on course.Traffic inbound to Edmonton/Villeneuve follow the YELLOWHEAD TRANSITION route west to CEMENT PLANT; then direct Edmonton/Villeneuve.			
TO THE NORTH/NORTHWEST: Remain on or east of the COOKING LAKE – BRIDGES track until north of the YELLOWHEAD TRANSITION route/Hwy 16; contact Edmonton Intl Terminal 127.4.			
TO THE SOUTHWEST: Remain east of Hwy 21 until advised; contact Edmonton International Terminal 127.4.			



EDMONTON INTL HELICOPTER TRAINING AREAS	NOT FOR NAVIGATION
The helicopter training areas "A" and "B" will be used for VFR helicopter training. Activities will include long-lining and auto-rotations.	
SCALE IN NAUTICAL MILES	

EDMONTON/VILLENEUVE HELICOPTER TRAINING AREAS	NOT FOR NAVIGATION
Use Heli Training Area "North" or "West" s/c to 3500 ASL. Remain North of Taxiway Bravo while using North Heli training area. Remain West of Taxiway Alpha while using West Heli training area.	
SCALE IN NAUTICAL MILES	

NOT FOR NAVIGATION