

NAV CANADA VFR NAVIGATION CHART

LEGEND

AERODROMES

Aerodrome symbols may be offset for clarity of presentation.
For services and other data see the Flight Supplement.

WITH SERVICES

WITH HARD SURFACED RUNWAYS



WITHOUT HARD SURFACED RUNWAYS



AERODROME DATA

NAME (M)
371 H53AT22.2
DAYS 60

NAME (M)
371 S3M122.3

NAME (R)
371 S

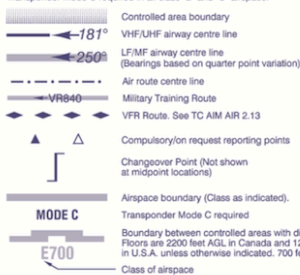
Customs available
Automatic Terminal Information Service
Elevation in feet (ASL)
Runway lighting available
ARCAL
Lit hrs or Off: see CFS
H Hard surfaced runway
53 Longest landing distance in hundreds of feet
(53 indicates length between 5270 and 5369)
DAYS 60 Day landing distance

M Mandatory Frequency
A Aerodrome Traffic Frequency
U Private advisory station (UNICOM) U1-122.8 U2-123.0
S Common Traffic Advisory Frequencies (USA)
S Sheltered mooring area
(M) Military aerodrome - restricted PPR, use only by specific authorization
(R) Restricted, PPR, use only by specific authorization
A Aerodrome Beacon
NO SVFR Fixed-wing special VFR flight is prohibited (USA)

AIRSPACE INFORMATION

All bearings are magnetic.

Controlled airspace below FL 180 is shown.
Transponder Mode C required in all class "B" and "C" airspace.



Class "B" control zone with ceiling 3000 feet ASL.
(Above aerodrome elevation 2700 feet)
Class "C" or "D" control zone as indicated with ceiling 3000 feet ASL. (Above aerodrome elevation 2700 feet)
Class "E" control zone (Aerodrome control zone, other countries)
Class "F" or Special Use airspace.
CANADA: CYA - Advisory CYD - Danger CYR - Restricted
USA: A - Alert P - Prohibited R - Restricted W - Warning
AREA ACTIVITY CODES
(A) Acrobatic (F) Aircraft Test Area (H) Hang Gliding (M) Military Operations (P) Parachute Dropping (S) Soaring (T) Training
MOA - Military Operation Area (USA)
Altitudes are inclusive unless otherwise indicated.
(CZQM) - NOTAM file indicator.



All National, Provincial and Municipal Parks are closed to aircraft unless otherwise specified in the A.I.P. Canada and/or the supplements or by prior permission of the appropriate park authorities.

RADIO AIDS TO NAVIGATION

Radio/Navigation facilities not operated by Nav Canada or Department of National Defence and Commercial Broadcasting Stations are subject to outage or change without NOTAM
VDF = VHF/DF UDF = UHF/DF VUDF = VHF/UHF/DF
Compass roses are oriented on magnetic north unless otherwise indicated.



RADIO AIDS TO NAVIGATION DATA BOXES

TORONTO
112.15 YZ
DME Ch 58(V)
KAMLOOPS
223 YKA

VHF/UHF Navigation Aids.
DME available on frequency or channel.
TACAN mode "Y" must be used.

HALIFAX
115.1 YHZ
DME Ch 98
248 HZ

TACAN and DME channels are without voice and are not underlined.
(Private) indicates NON Nav Canada/DND facility.
TWB-Transcribed Weather Broadcast.
Underline indicates no ATS communication on this frequency.

AIR/GROUND COMMUNICATION BOXES

HEAVY LINE BOXES indicate FSS with Standard Group Frequencies 126.7, 121.5, 243.0.

Other frequencies available are shown above the box.
Barred frequencies (e.g. 243.0) are not available.
In the USA heavy line boxes indicate Flight Service Stations with standard frequencies 255.4, 122.2 and emergency 243.0, 121.5.

FSS combined with Navaid
243.0 122.5

FSS not associated with Navaid
243.0 122.5

O/T see CFS - indicates other communication services available outside FSS hours. See CFS for details.

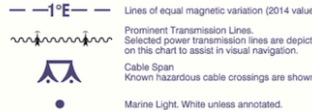
THIN LINE BOXES - Frequencies above box are remote to site indicated in box from site shown below box.
Those without frequencies and controlling FSS name indicate no FSS frequencies available.

RCO or DRCO combined with Navaid
126.7
RCO or DRCO not associated with Navaid
243.0 123.275

DRCO - dialing instructions described in CFS.
A/G Private Air/Ground Station.
Only shown when more than 75 nautical miles from public station.

CARS AIRPORT RADIO (ARPT RDO)
Community Aerodrome Radio Station (CARS)

MISCELLANEOUS



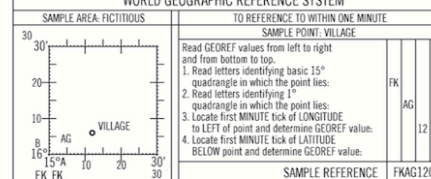
Lighting Annotations
Al - alternating white and red if colour not indicated, F - fixed, Fl - flashing, Iso - equal interval, Q - quick flashing, Oc - occulting, Fl(3) - group flashing, Oc(2) - group occulting, SEC - sector, sec - second, W - white, R - red, B - blue, G - green, Y - yellow, (3) - number of flashes for time period.

Obstruction and group obstructions below 1000' AGL.
Obstruction and group obstructions 1000' AGL and above.
Elevation in feet (ASL)
Height in feet (AGL)
NOTE: Known obstructions 300' or higher and known significant obstructions below 300' are shown. When two or more are in the same area, only the highest obstruction is shown. Obstructions are lighted unless labelled "unlighted".

38

The Maximum Elevation Figure (MEF) is depicted in THOUSANDS and HUNDREDS of feet above sea level. The MEF represents the highest feature in each quadrangle. Flight at or below the MEF may be at or below the highest obstruction in that quadrangle. Pilots need to provide a margin for ground and obstacle clearance and for altimeter error. Please see AIM1 RAC 5.4 602.15 (a) (NOTE) and AIM AIR 1.5 for detail. The MEF is calculated based on terrain data and known and unknown obstacles.

TO REFERENCE TO WITHIN ONE MINUTE



15' Quadrangle Line

NOTICE
Additions and corrections for this chart are requested. Send to:
AIS DATA COLLECTION
PO BOX 9824 STN T CSC
OTTAWA ON K1G 9Z9

Published by NAV CANADA in accordance with ICAO Annexes 4 and 15 of the Convention on International Civil Aviation

Cartography and Printing:
© 2014 NAV CANADA

Source of Canadian Civil Aeronautical Data:
© 2014 NAV CANADA. All rights reserved.

WARNING: Refer to current U.S. Charts and flight information publications for information within U.S. airspace.



Topographic data WGS84