

Departure Route Description

**All rwsys:** Maintain **7000** or as assigned. Expect radar vectors to filed/assigned route and clearance to flight planned altitude/flight level 5 minutes after departure.

**Rwy 08L:** Requires a minimum climb gradient of **280** ft/NM to **500**. Climb hdg **083°** or as assigned by ATC.

**Rwy 08R:** Climb hdg **083°** or as assigned by ATC

**Rwy 13:** Climb hdg **125°** or as assigned by ATC.

**Note:** Bldg to 50 ASL aprx 0.15 NM past departure end of rwy, 685' LEFT of rwy centreline. Tower to 50 ASL aprx 0.2 NM past departure end of rwy, 500' LEFT of rwy centreline.

**Rwys 26L & 26R:** Requires a minimum climb gradient of **290** ft/NM to **2100**. Climb hdg **263°** or as assigned by ATC.

**Rwy 31:** Climb hdg **305°** to **500**. Then climbing LEFT turn hdg **263°** or as assigned by ATC.

DEPARTURE CLIMB RATE V/V (FPM)

GROUND SPEED	90	120	140	160	180	200	250	300
280 FT/NM	420	560	660	750	840	940	1170	1400
290 FT/NM	440	580	680	780	870	970	1210	1450

**Note:** Refer to Noise Abatement Procedures for additional requirements.

Communication Failure

On recognition of failure 5 minutes or less after take-off, below **7000** and in IFR weather conditions, proceed as follows:

**Rwys 08L & 08R:**

- 1. Select transponder code 7600;
- 2. Beyond 10 DME of “YVR” VOR maintain last assigned altitude, RIGHT turn direct to “YVR” VOR. Hold INBD **R-260**;
- 3. Proceed on course 5 minutes after selecting code 7600 and climb to flight planned altitude.

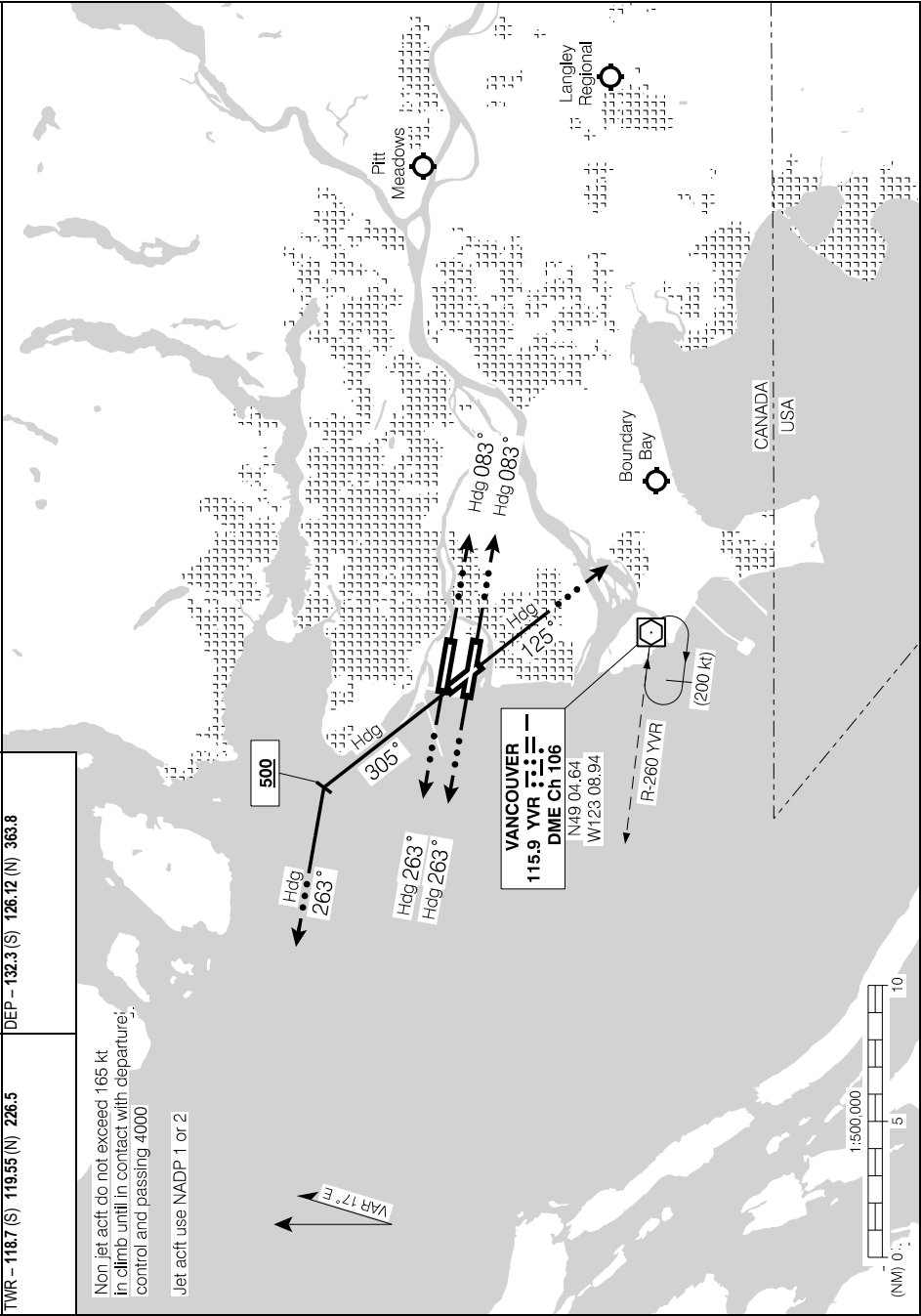
**Rwys 13, 26L, 26R & 31:**

- 1. Select transponder code 7600;
- 2. Proceed on course 5 minutes after selecting code 7600 and climb to flight planned altitude.

**Note:** If communication failure occurs more than 5 minutes after take-off, comply with appropriate procedures for Communication Failure enroute.

SID (VECTOR)  
**VANCOUVER TWO DEP (YVR2.)**

VANCOUVER INTL, BC  
**CYVR**



**VANCOUVER TWO DEP (YVR2.)**  
EFF 8 SEP 22

**CYVR**