

Departure Route Description

- All rws:** Maintain **2000** or as assigned. Expect radar vectors to filed/assigned route or depicted fix and clearance to flight planned altitude/flight level 10 minutes after departure.
- Rwy 26L:** Requires a minimum climb gradient of **290** ft/NM to **2000**. Climb hdg **263°** to **500**. Then climbing LEFT turn hdg **200°** or as assigned by ATC.

DEPARTURE CLIMB RATE V/V (FPM)

GROUND SPEED	90	120	140	160	180	200	250	300
290 FT/NM	440	580	680	780	870	970	1210	1450

Note: Refer to Noise Abatement Procedures for additional requirements.

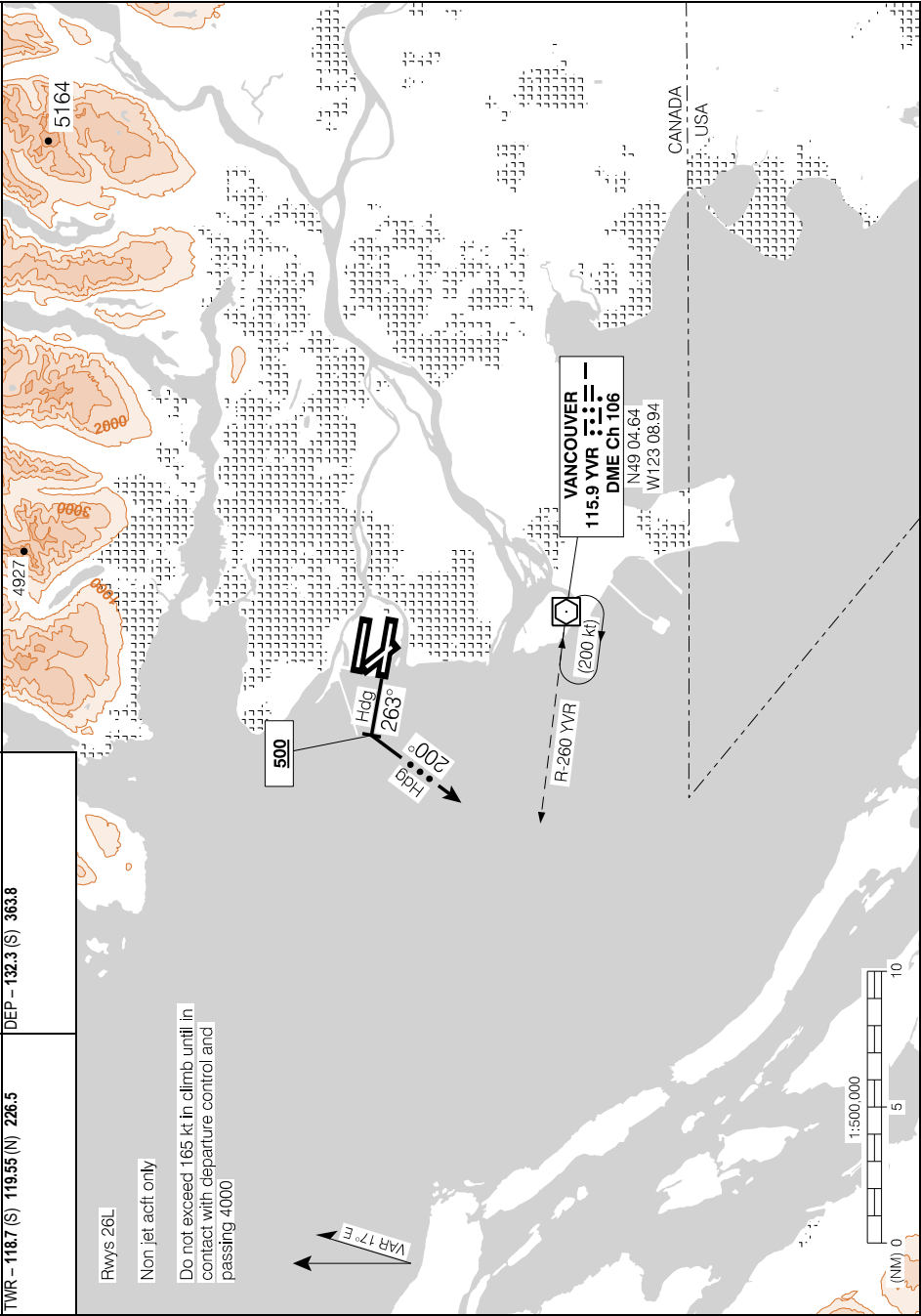
Communication Failure

If no radio contact with Departure Control by published/assigned altitude proceed as follows:

1. Select transponder code 7600;
2. Maintain last assigned altitude and turn direct to "YVR" VOR. Hold INBD **R-260**;
3. Proceed on course 5 minutes after selecting code 7600 and climb to flight planned altitude.

SID (VECTOR)
RICHMOND SEVEN DEP (RICHM7.)

VANCOUVER INTL, BC
CYVR



RICHMOND SEVEN DEP (RICHM7.)

CYVR

EFF 21 MAY 20