

Departure Route Description

- All rwys:** Maintain **7000** or as assigned. Expect radar vectors to filed/assigned route or depicted fix and clearance to flight planned altitude/flight level 5 minutes after departure.
- Rwy 26L:** Requires a minimum climb gradient of **290** ft/NM to **2100**. Climb hdg **263°** to **1000**. Then climbing LEFT turn hdg **247°** or as assigned by ATC.

DEPARTURE CLIMB RATE V/V (FPM)

GROUND SPEED	90	120	140	160	180	200	250	300
290 FT/NM	440	580	680	780	870	970	1210	1450

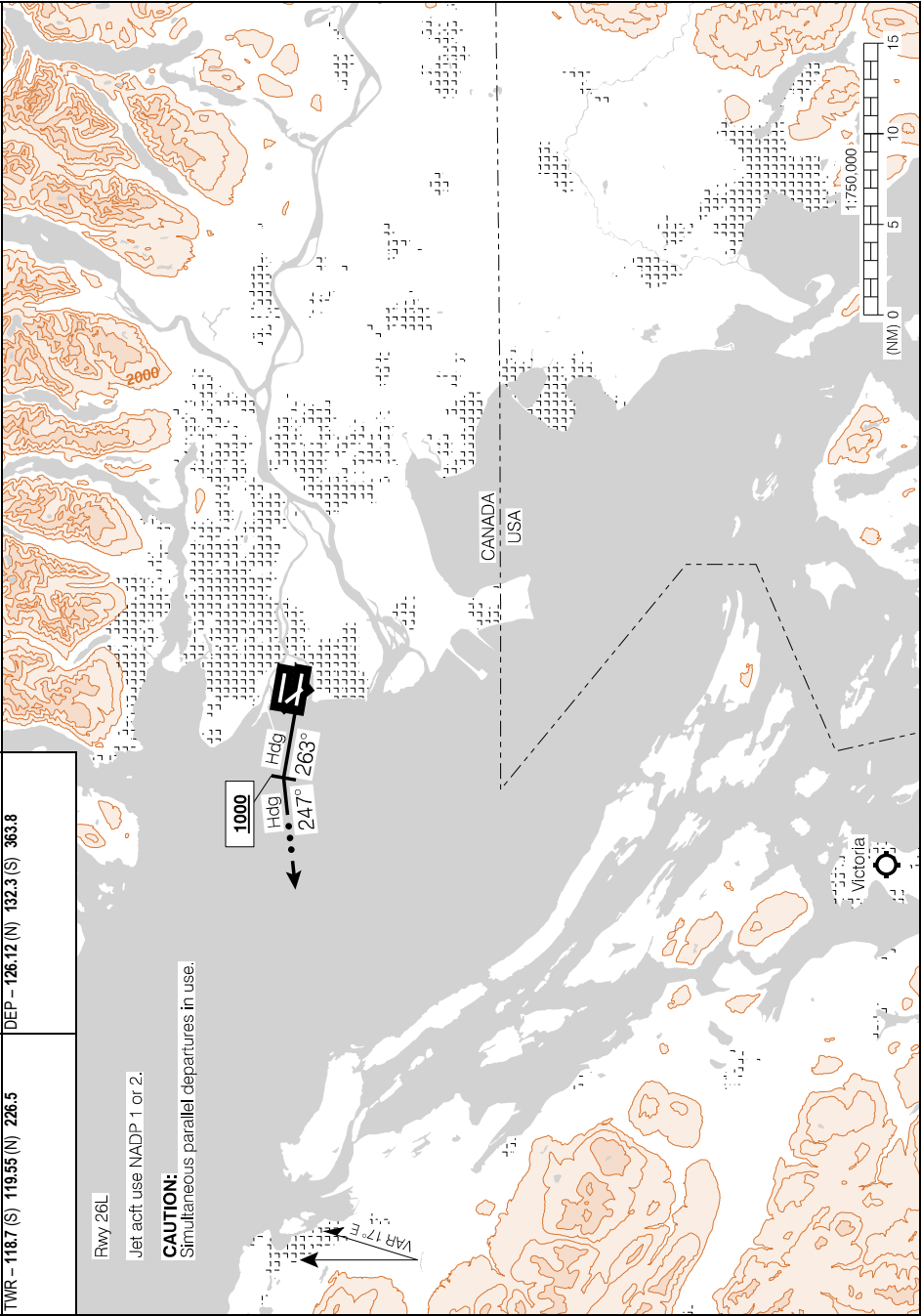
NOTE: Refer to Noise Abatement Procedures for additional requirements.

Communication Failure

- If no radio contact with Departure Control by published/assigned altitude proceed as follows:
1. Select transponder code 7600;
 2. Maintain last assigned altitude until 5 minutes after departure; then,
 3. Proceed on course and climb to flight planned altitude.

SID (VECTOR)
GEORGIA SIX DEP (GRG6.)

VANCOUVER INTL, BC
CYVR



GEORGIA SIX DEP (GRG6.)

CYVR

EFF 21 MAY 20