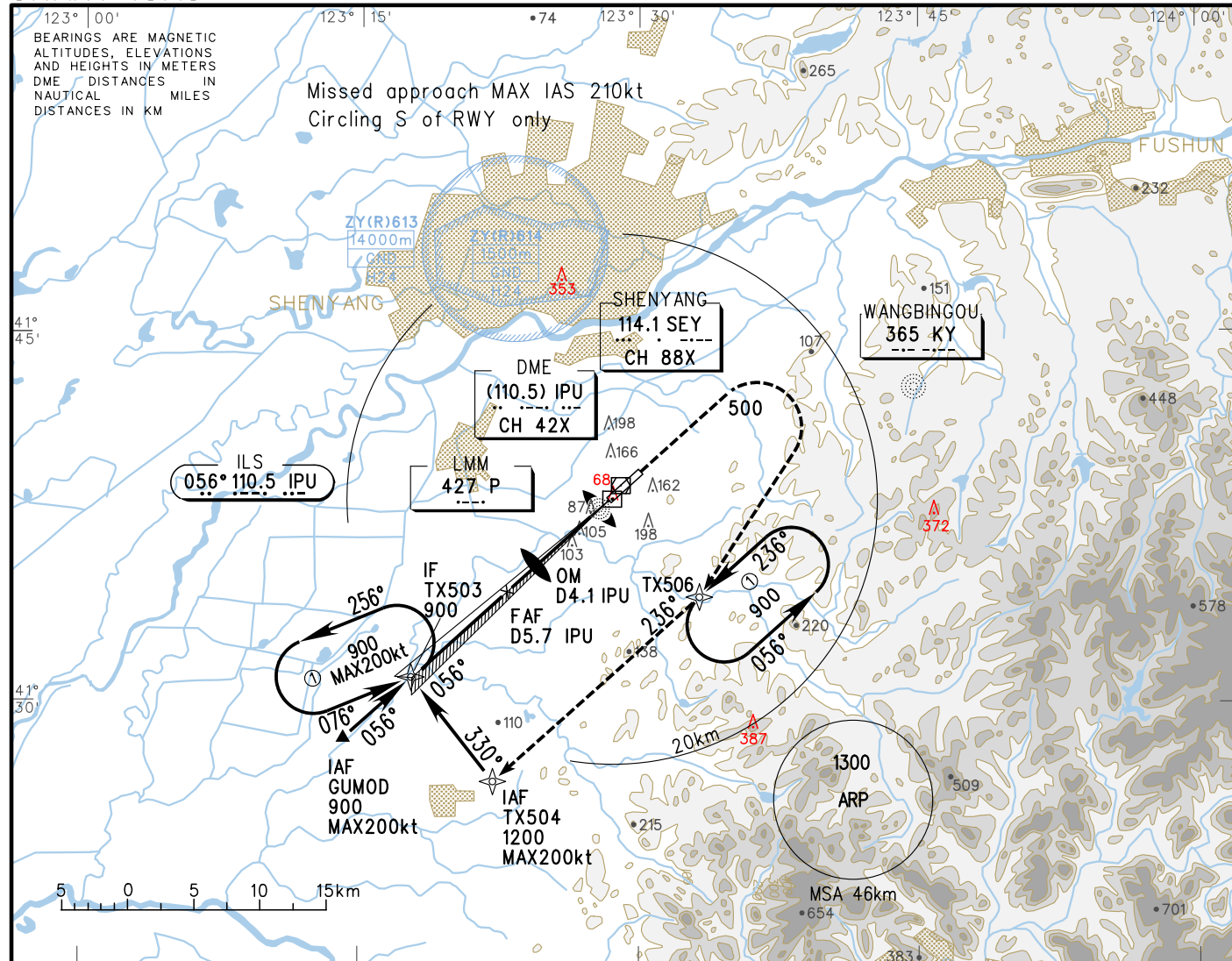


123° 00'

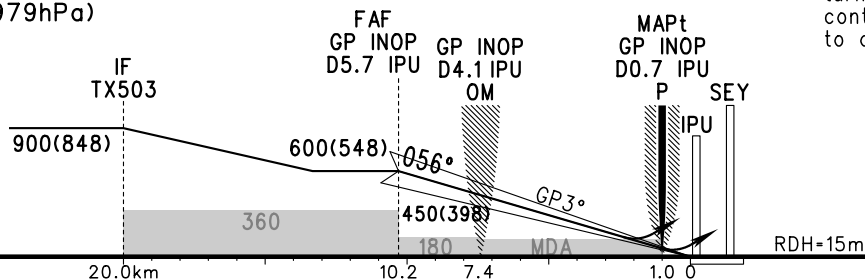
BEARINGS ARE MAGNETIC
ALTITUDES, ELEVATIONS
AND HEIGHTS IN METERS
DME DISTANCES IN
NAUTICAL MILES
DISTANCES IN KM

ZYTX SHENYANG/Taoxian
RNP ILS/DME z RWY06

GP INOP	DME (IPU) (NM)	7	6	5	4	3	2	1
	ALT (m)			537	440	343	246	

TL	3600
TA	3000
	3300(QNH $\geq 1031\text{hPa}$)
	2700(QNH $\leq 979\text{hPa}$)

MISSED APPROACH
Climb straight ahead to 500,
turn RIGHT to TX506, alt 900,
contact ATC or fly to TX504
to approach.



	A	B	C	D	FAF-MAPt(GP INOP) 9.2km							
ILS/DME ^{DA(H)} RVR/VIS	112(60) 550/800		117(65) 550/800	122(70) 550/800	GS in	kt kmH	80 150	100 185	120 220	140 260	160 295	180 335
GP INOP ^{MDA(H)} VIS	165(114) 1300				Time	min:sec	3:44	2:59	2:29	2:08	1:52	1:39
CIRCLING ^{MDA(H)} VIS	260(199) 2100	260(199) 2800	320(259) 3700	330(269) 4600	Rate of descent	m/s	2.2	2.7	3.2	3.8	4.3	4.9
Changes: 0BST.												